

بِسْمِ اللَّهِ الرَّحْمَنِ الرَّحِيمِ

COLLEGE LIFE

Most irritating moment

>>>Morning Alarm

Most Dreadful journey

>>>Way to class

Most Tragic moments

>>>>Surprise Test

Most Wonderful News

>>>Teacher is ABSENT

A close-up photograph of a baby lying on its back on a white, fluffy blanket. The baby is smiling broadly, showing its teeth. A woman's hands are visible, gently holding the baby's hands. The woman is wearing large gold hoop earrings and a red and white striped shirt. The background is a soft, out-of-focus white.

Infant

**Good prenatal and
post natal care**

CLEAVAGE

Divisions in zygote, increases the numbers of cells.

- Called **blastomeres** .
- **Loosely** arranged until the eight-cell stage,
- After the third cleavage, forms a **compact** ball of cells held together by
TIGHT JUNCTIONS .


BLASTOCYST FORMATION

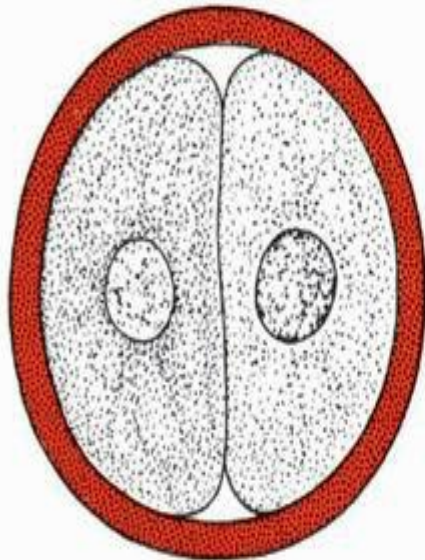
- About the time the morula enters the uterine cavity, fluid begins to penetrate through the zona pellucida forming a single cavity,
- **The blastocele** ----->>>>>>>>> **Blastocyst.**

- By the end of the **first week** , the zygote has passed through the morula and blastocyst stages and has begun implantation in the uterine mucosa.

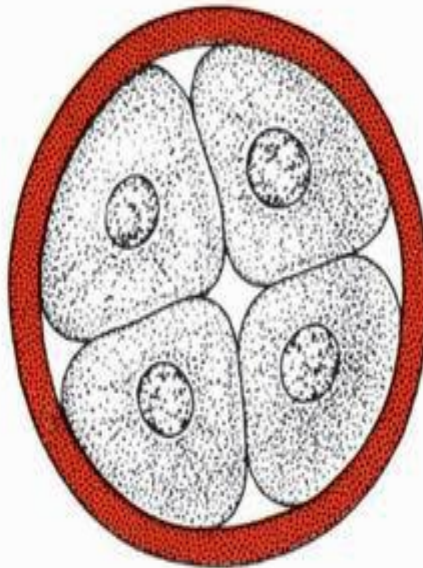
- **Cleavage results in an increase in cells, the Blastomeres**
- **After three divisions, blastomeres undergo compaction to become a tightly grouped ball of cells with inner and outer layers.**
- **Compacted blastomeres divide to form a 16-cell morula. Morula enters the uterus on the third or fourth day after fertilization,**

- **Cavity appear, and the blastocyst forms.**
- **The inner cell mass, which is formed at the time of compaction**
- **Will develop into the embryo proper at one pole of the blastocyst.**
- **The outer cell mass, which surrounds the inner will form the trophoblast.**

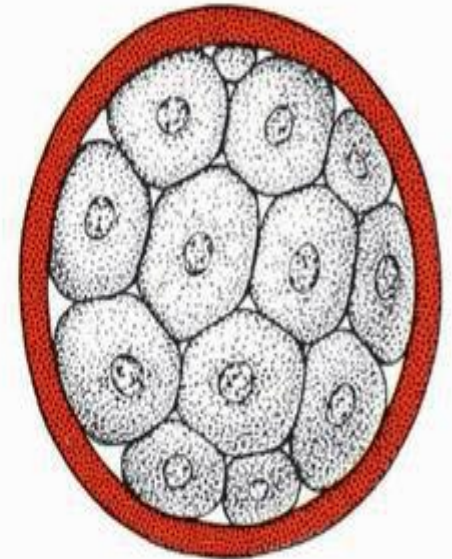
Biology:
The only science
where
multiplication

and division
mean the same thing.



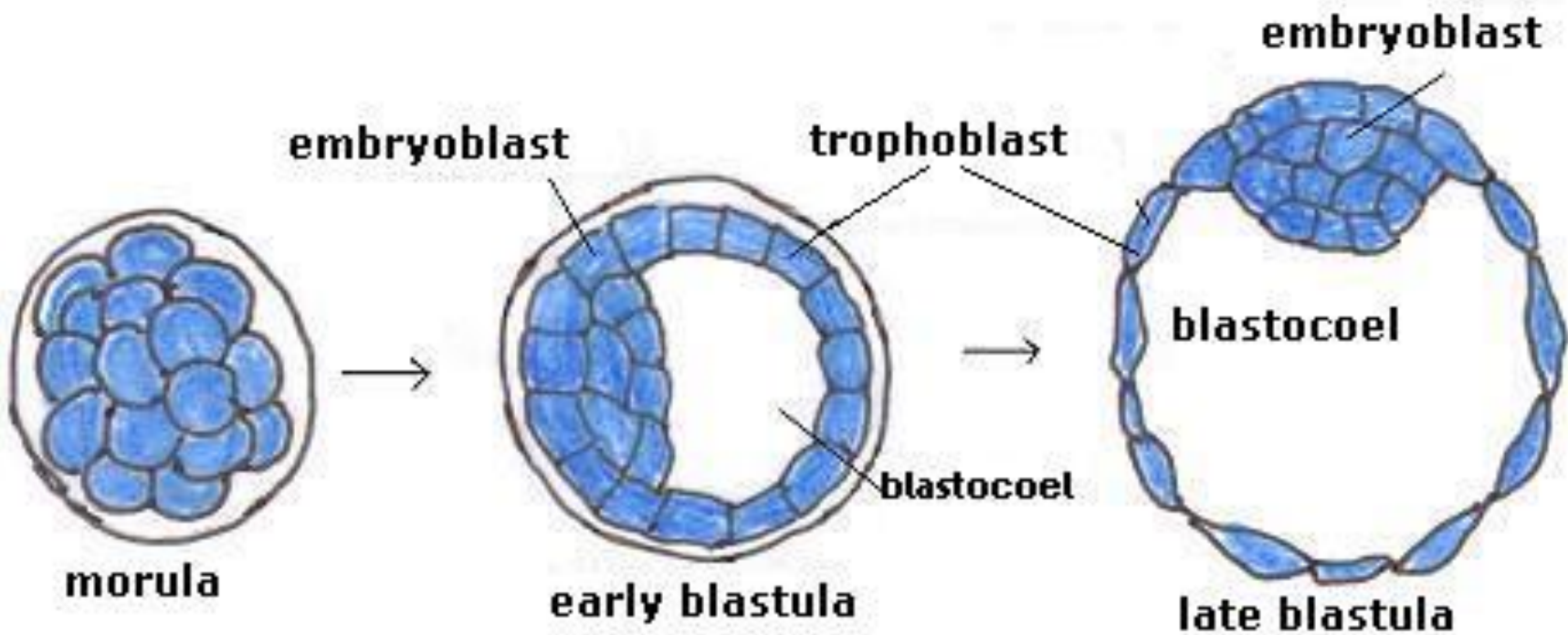
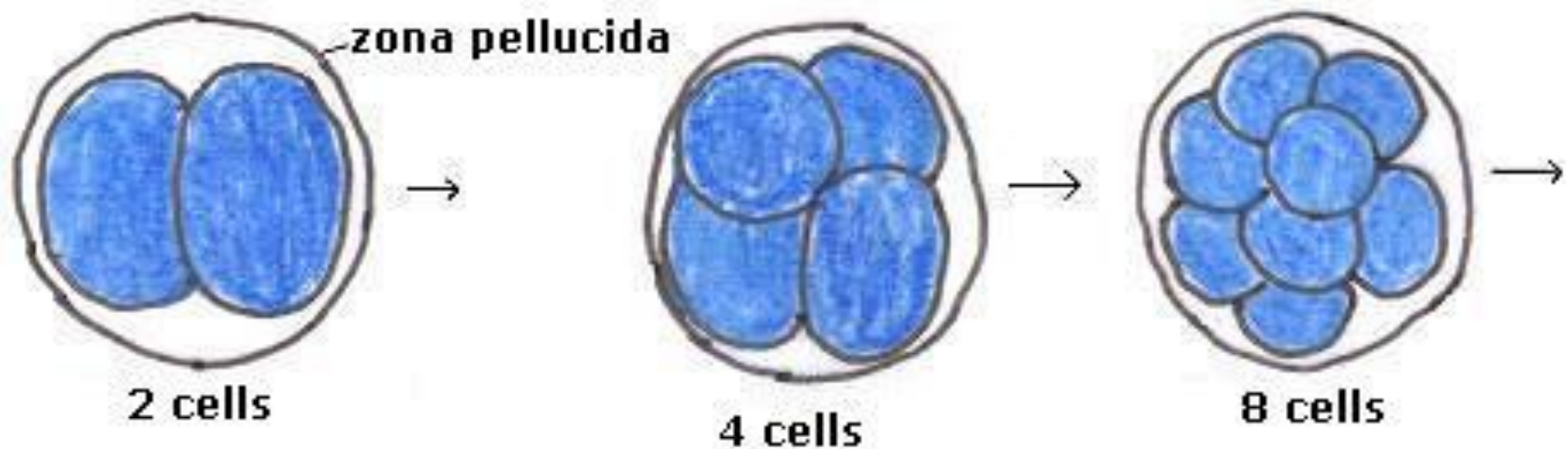
Two-cell stage

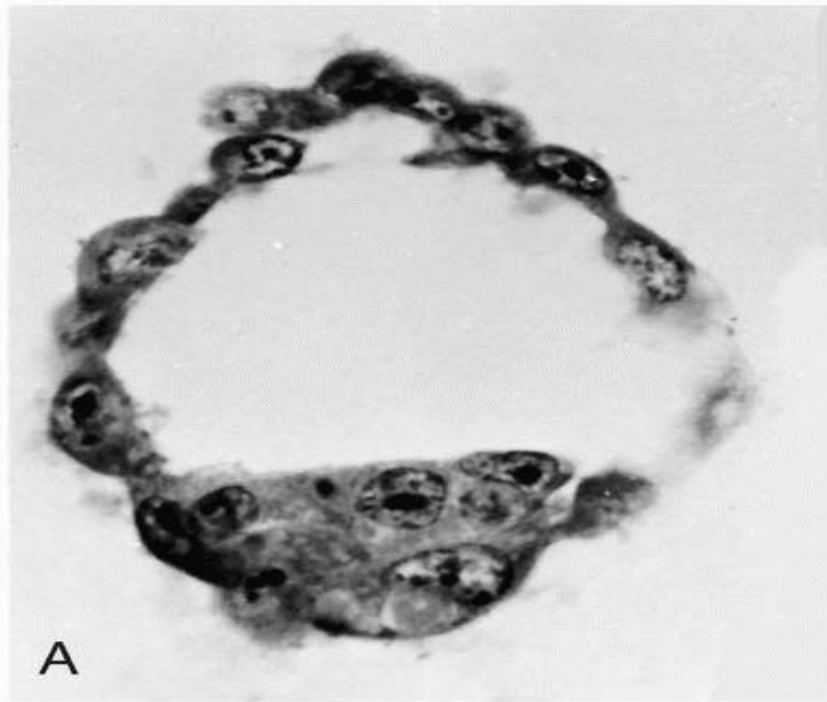


Four-cell stage

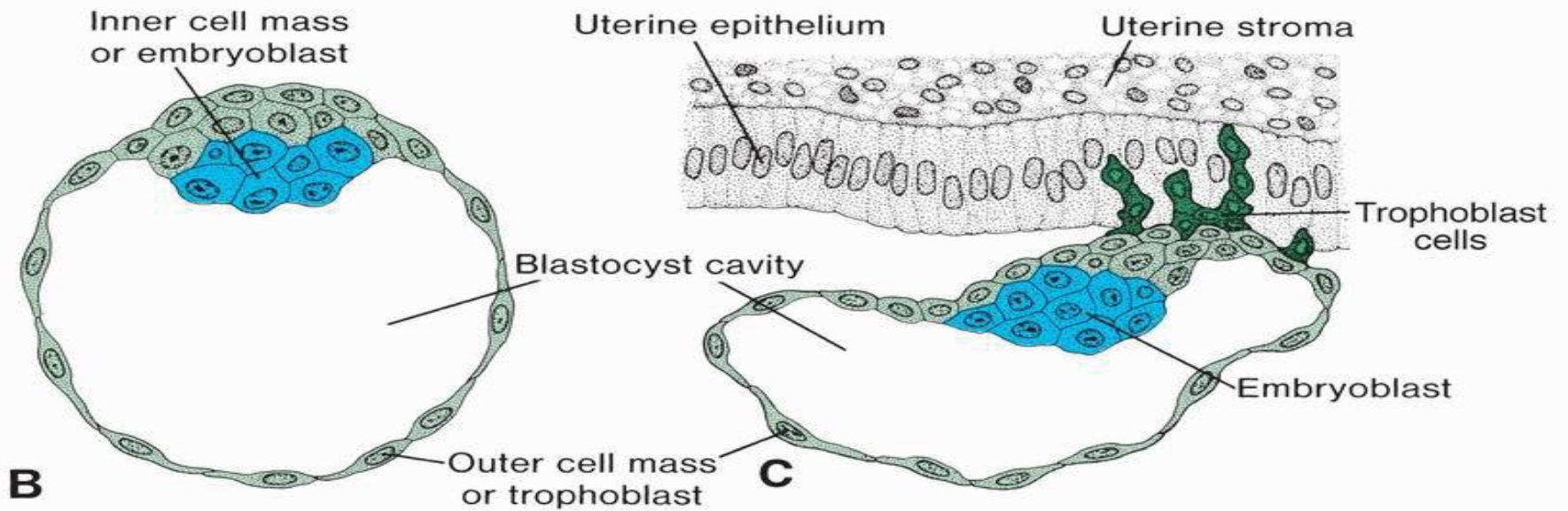


Morula



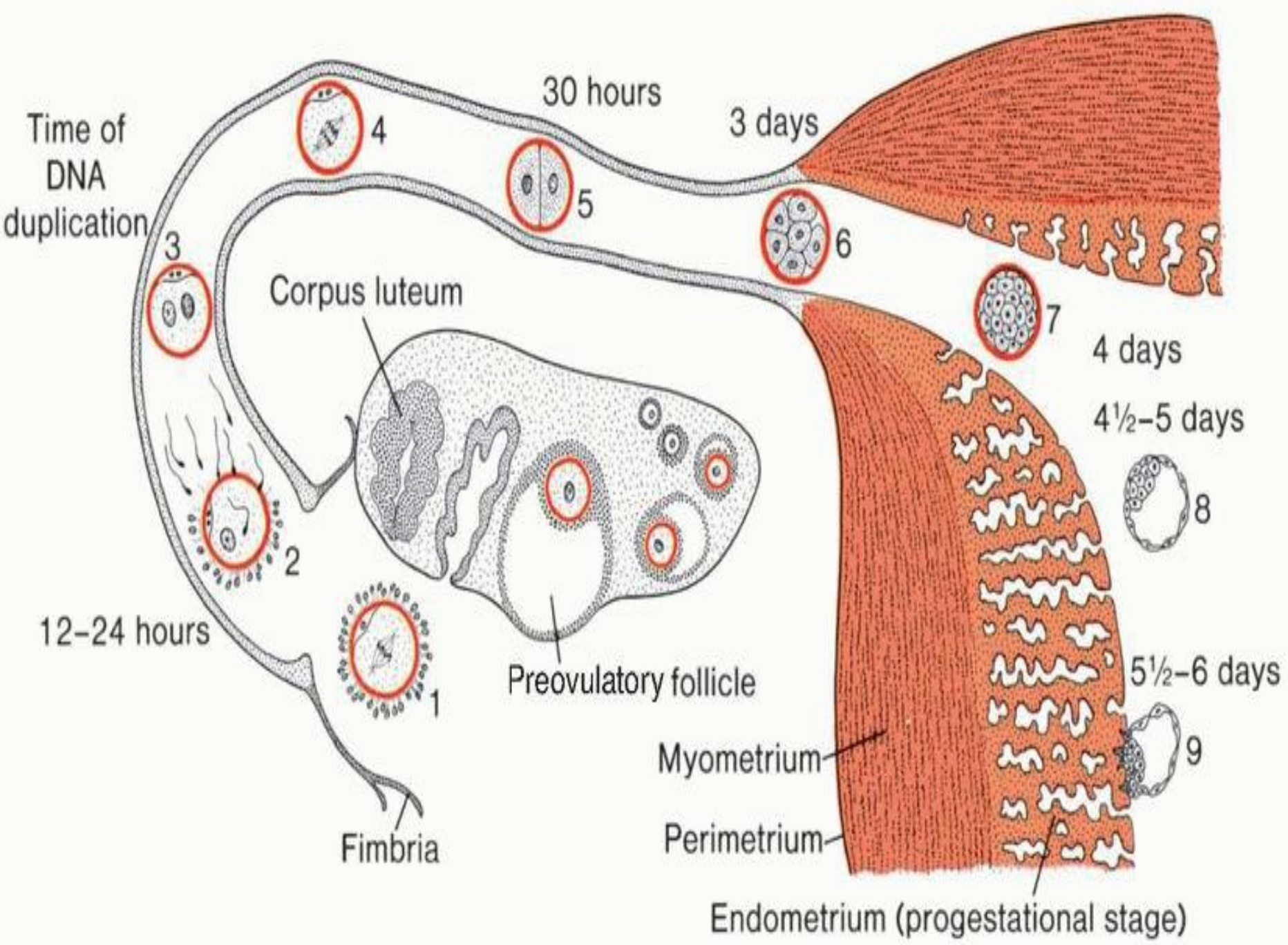


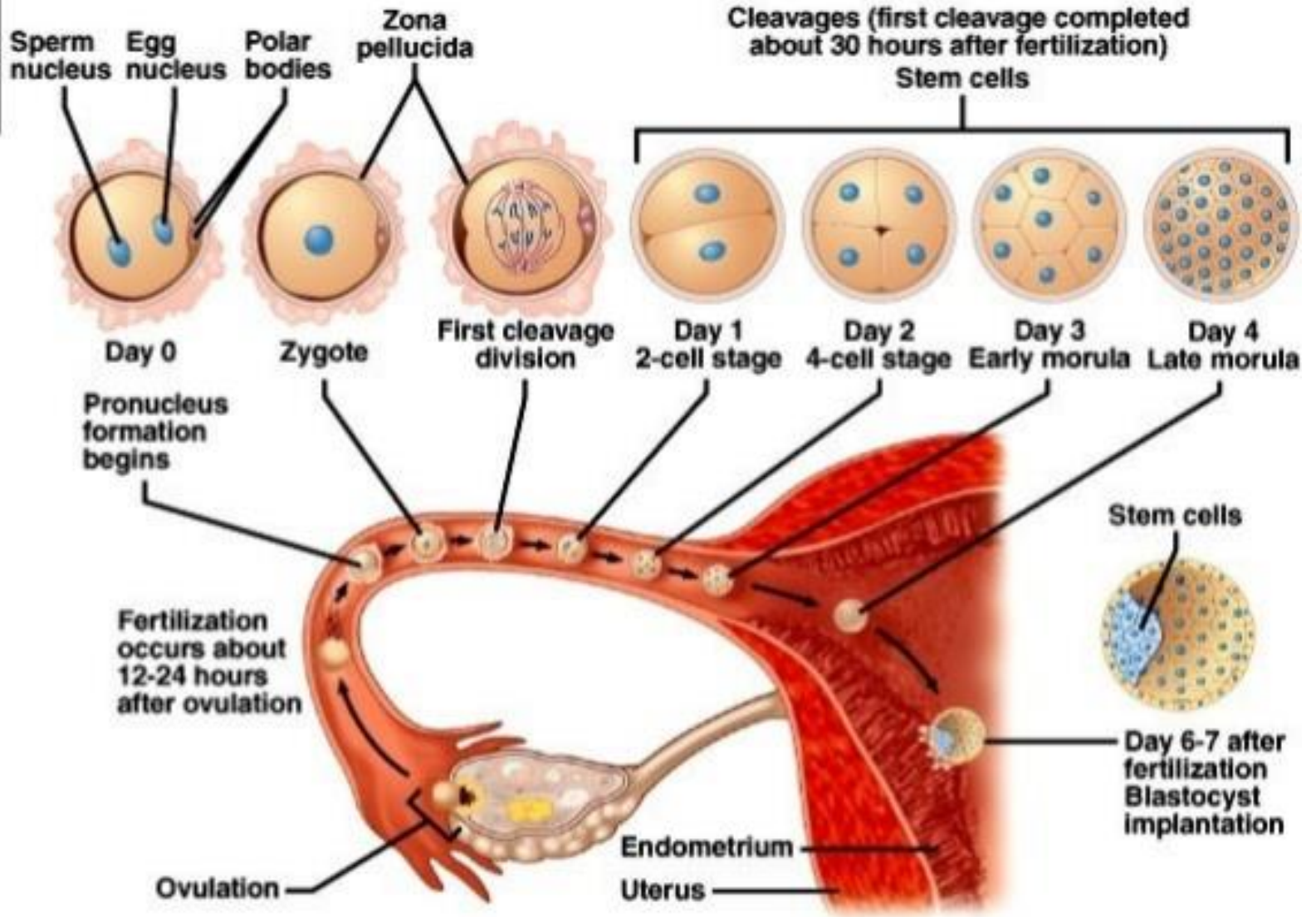
A

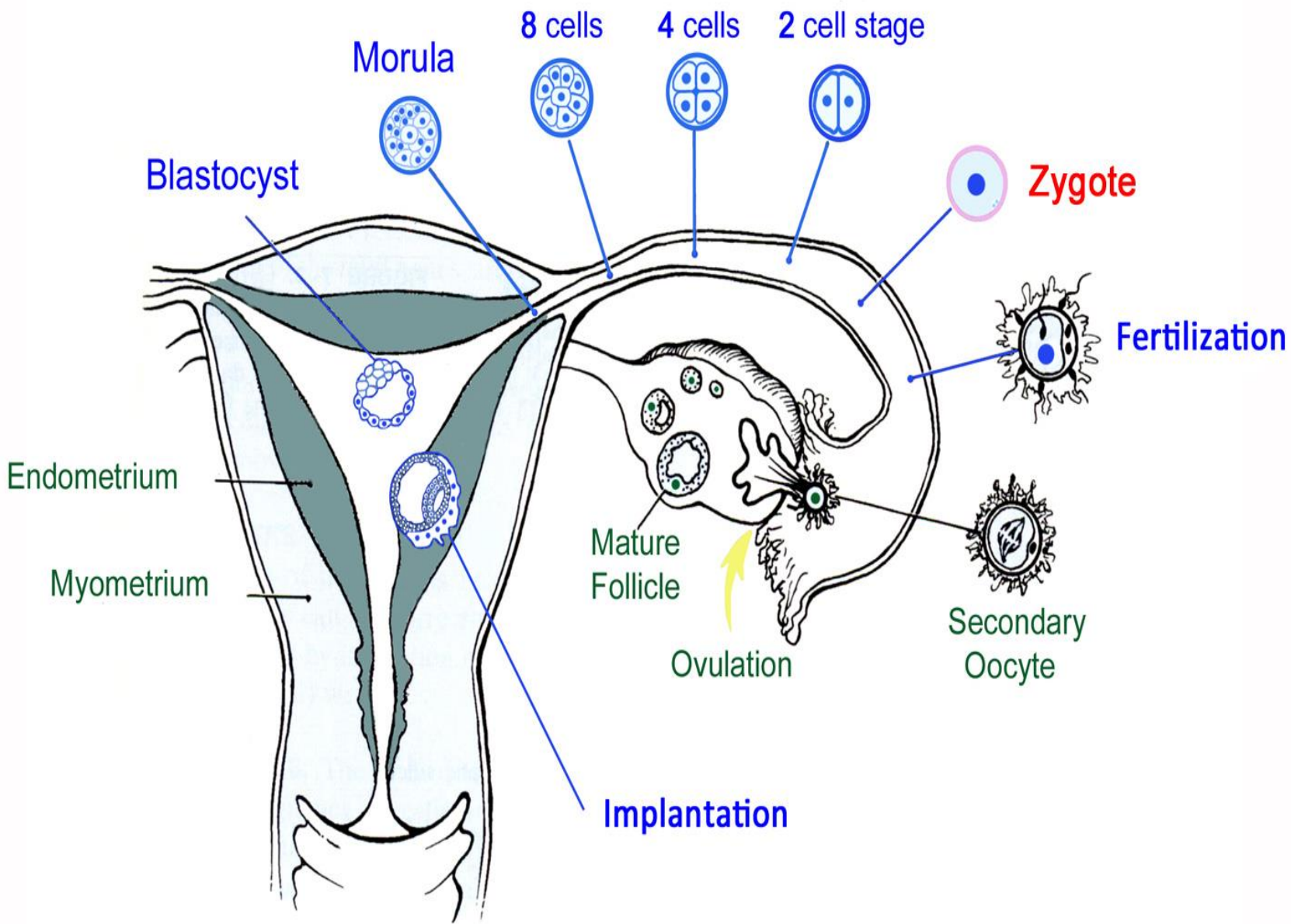


B

C







- **Clinical Correlates**
- **Embryonic Stem Cells**
- Derived from the inner cell mass of the embryo. Pluripotent and can form virtually any cell or tissue type, they have the potential for curing a variety of diseases.

Embryonic Stem Cells may be obtained from embryo after in vitro fertilization, a process called reproductive cloning.

Oocytes are stimulated to differentiate into blastocysts, and **Embryonic Stem** cells are harvested.

- **Abnormal Zygotes**

- The exact number of abnormal zygotes formed is unknown because they are usually lost within 2 to 3 weeks of fertilization, before the woman realizes she is pregnant.



**Oh, No, No, ???
Yes, No, Yes ???**

**THANK YOU
I dont know, but I
was like u and u will
be like me.**

**If A Single Teacher Can't
Teach Us All The Subjects,
Then..**

**How Could You Expect
A Single Student To
Learn All Subjects??**