



DEEP PERINEAL POUCH

BY FATIMA HAIDER

KGMC – 2ND YEAR

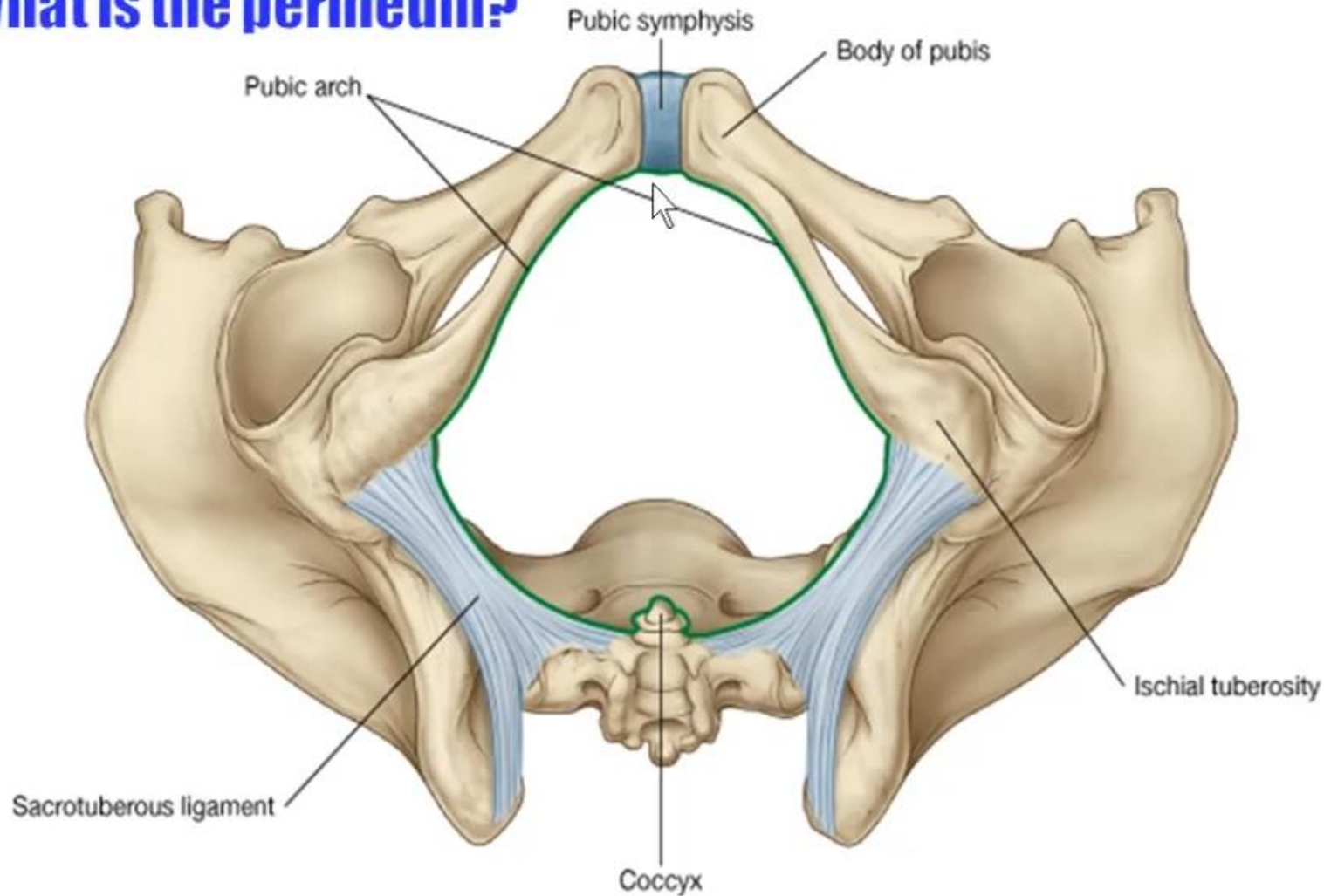
LEARNING OBJECTIVES

By the end of this lecture, students will be able to identify:

- ▶ Perineum
- ▶ Perineal pouches in the urogenital triangle
- ▶ Boundaries of deep perineal pouch
- ▶ The contents of deep perineal pouch
- ▶ Blood supply of deep perineal pouch
- ▶ Innervation of deep perineal pouch
- ▶ Differences in contents of male and female deep perineal pouches

BOUNDARIES & DIVISIONS

What is the perineum?

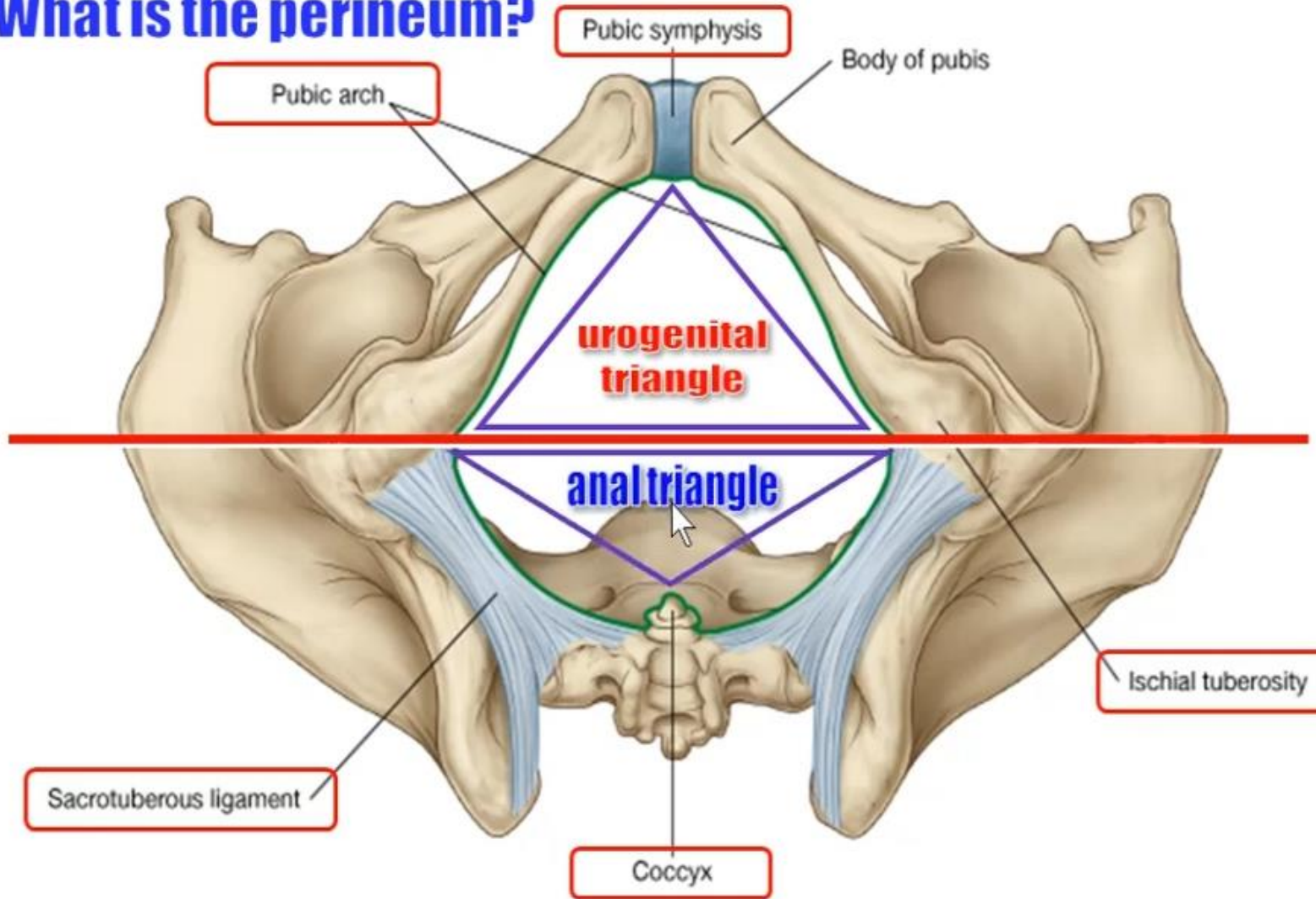


This is the pelvic outlet. Perineum is formed of structures filling the pelvic outlet. Boundaries of pelvic outlet:

- Anteriorly – lower border of pubic symphysis
- Posteriorly – tip of the coccyx
- On each side (from anterior to posterior) – pubic arch, ischial tuberosity, sacrotuberous ligament

BOUNDARIES & DIVISIONS

What is the perineum?

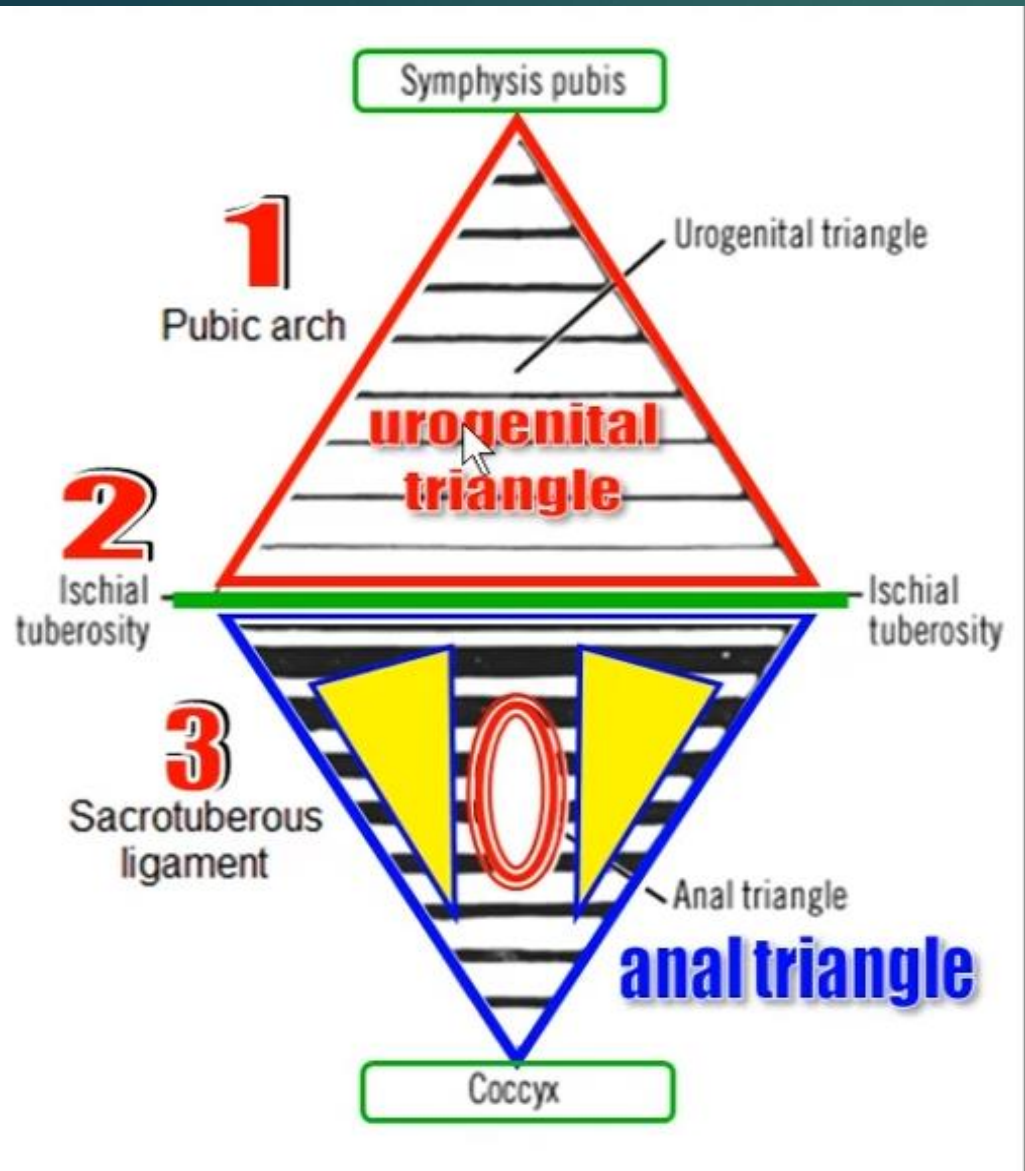


The perineum is divided into two triangles:

1. Anterior urogenital triangle
1. Posterior anal triangle

by a horizontal plane passing through the anterior end of the ischial tuberosities.

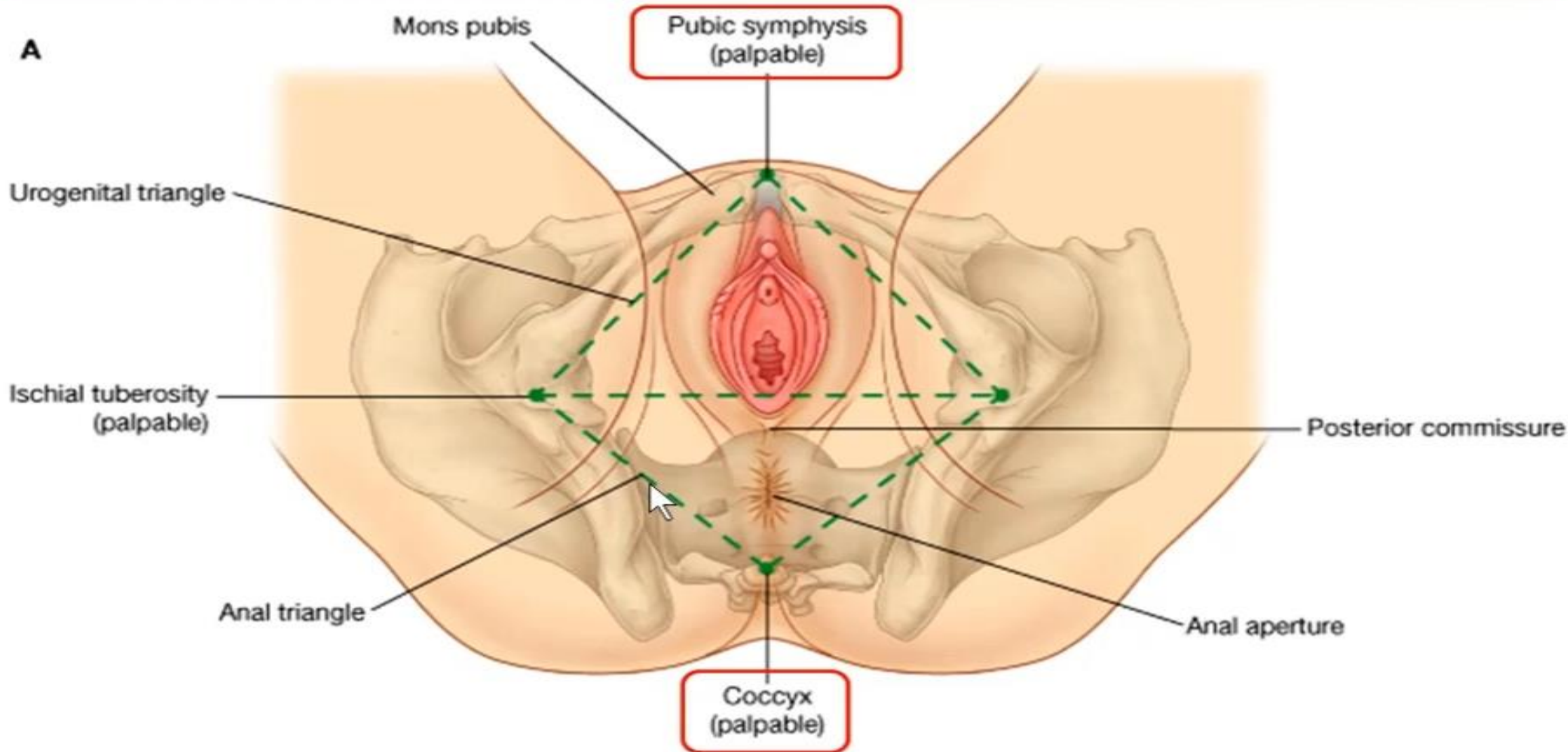
UROGENITAL TRIANGLE



It contains superficial and deep perineal pouches.

On the surface, urogenital triangle presents penis and scrotum in male and external genitalia and orifices of urethra and vagina in female.

FEMALE PERINEUM



Fascia of the Urogenital Triangle

1. Superficial fascia
2. Perineal membrane
3. Pelvic fascia



Fascia of the Urogenital Triangle

1. Superficial fascia

2. Perineal membrane

3. Pelvic fascia



Note that the deep perineal pouch is deep to perineal membrane while superficial perineal pouch is superficial to perineal membrane.

Boundaries of the Deep Perineal Pouch

1. FLOOR:

perineal membrane

2. ROOF:

pelvic fascia

3. SIDES:

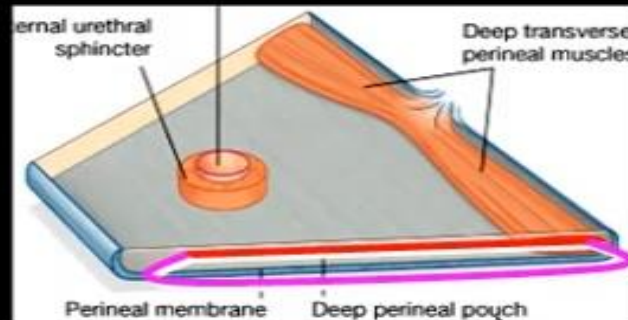
pubic arch

4. ANTERIORLY:

fusion of perineal membrane & pelvic fascia

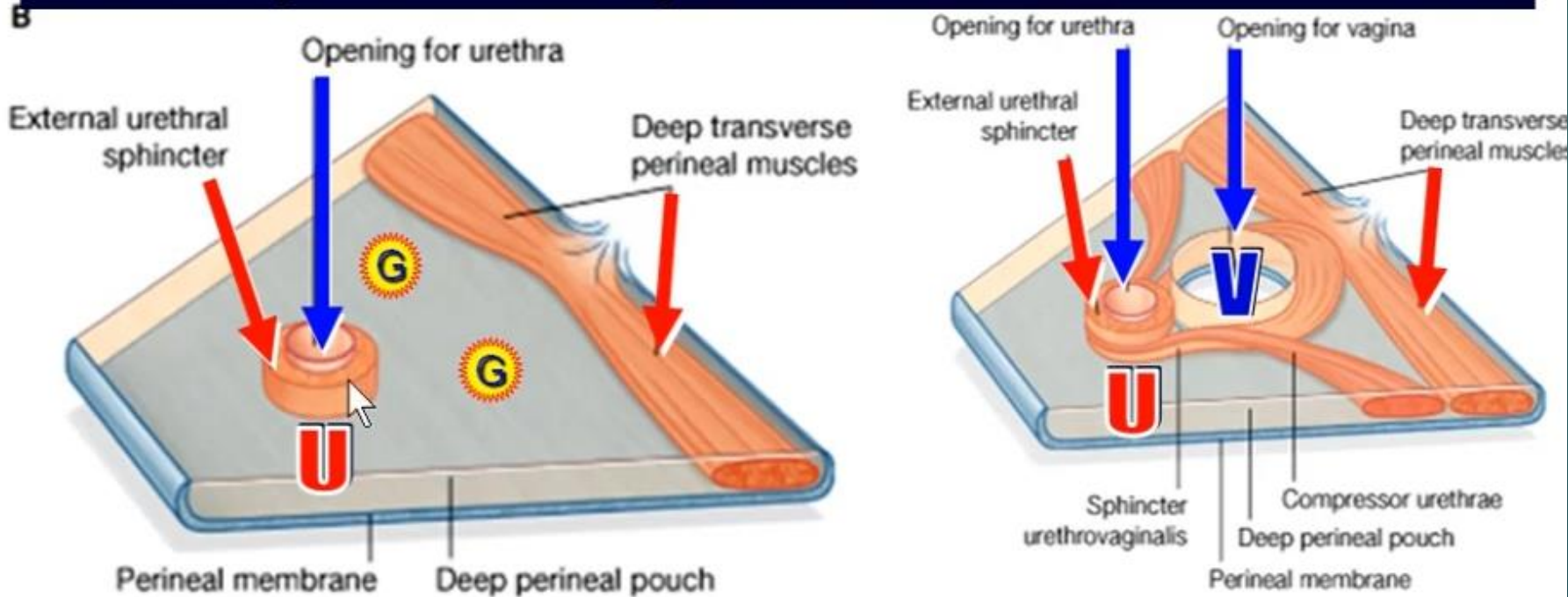
5. POSTERIORLY:

fusion of Superficial fascia & pelvic fascia



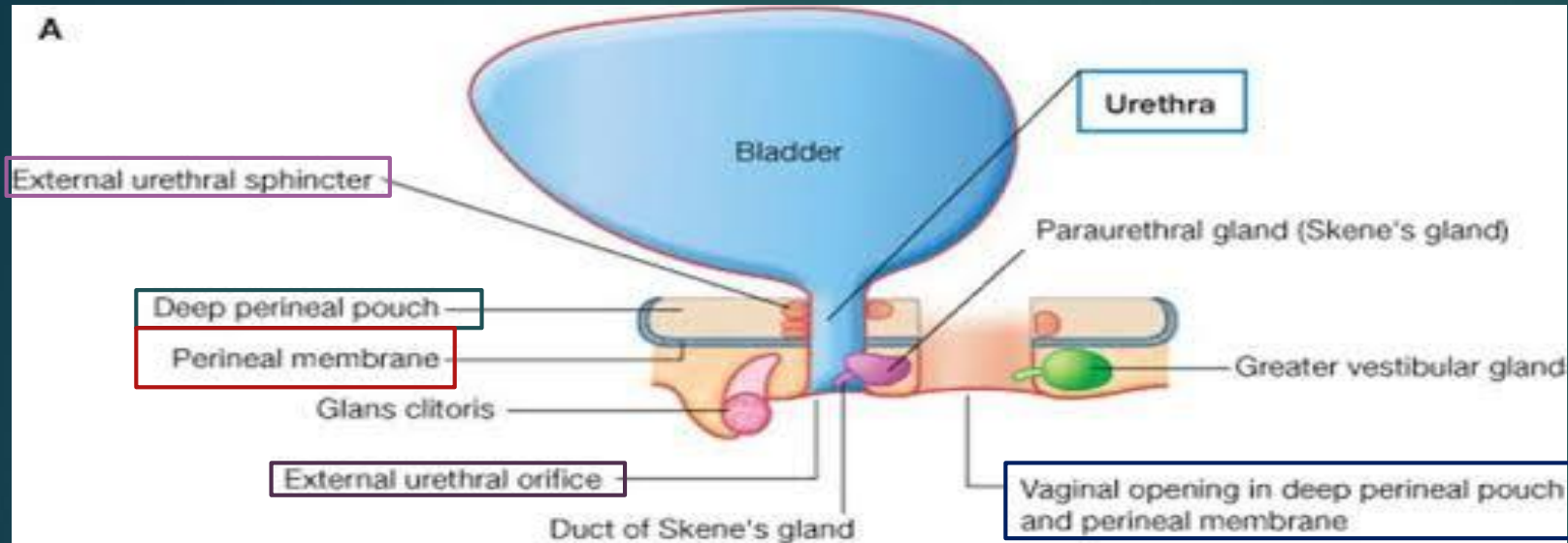
Contents of the Deep Perineal Pouch

1. Urethra in the male & female
2. Bulbourethral glands in the male
3. Vagina in the female
4. Muscles: 2 forming urogenital diaphragm
 - a. External urethral sphincter: around the urethra
 - b. Deep transverse perineal muscle

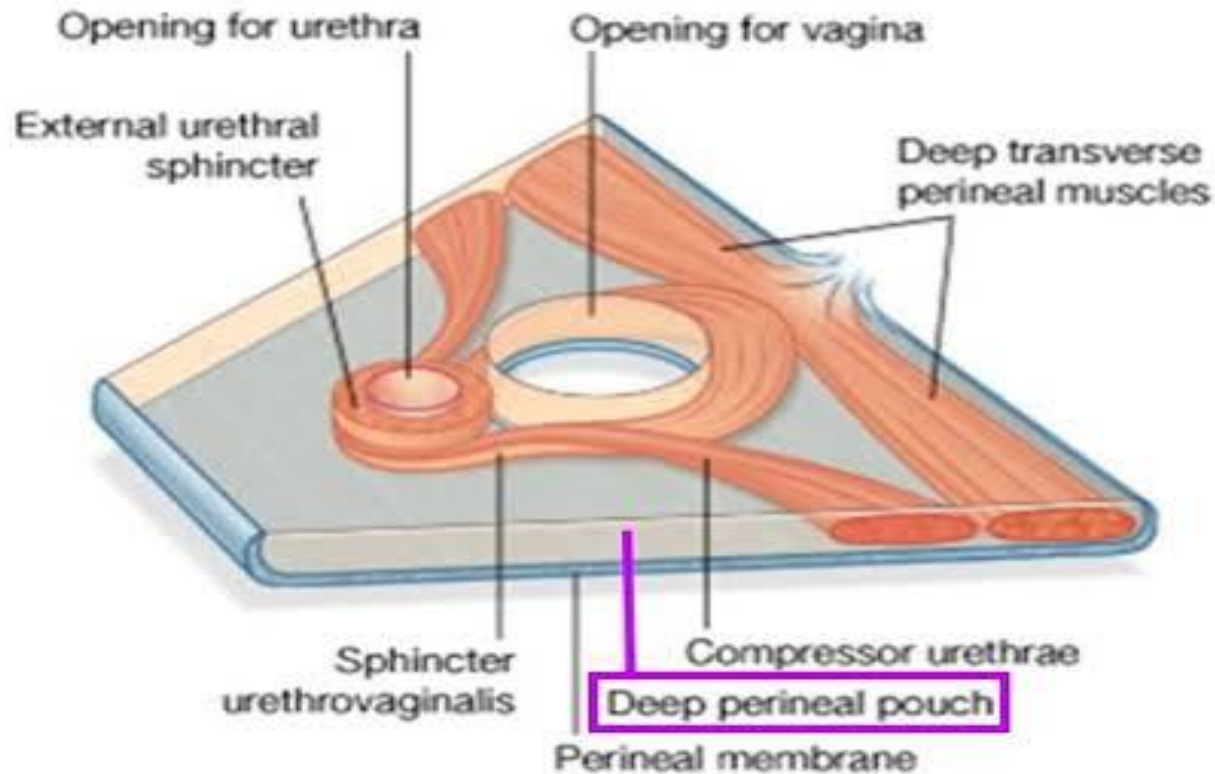


The major function of the urogenital diaphragm is to support the urethra and maintain the urethrovesical junction. (The urethrovesical junction is located where the ureter meets the bladder)

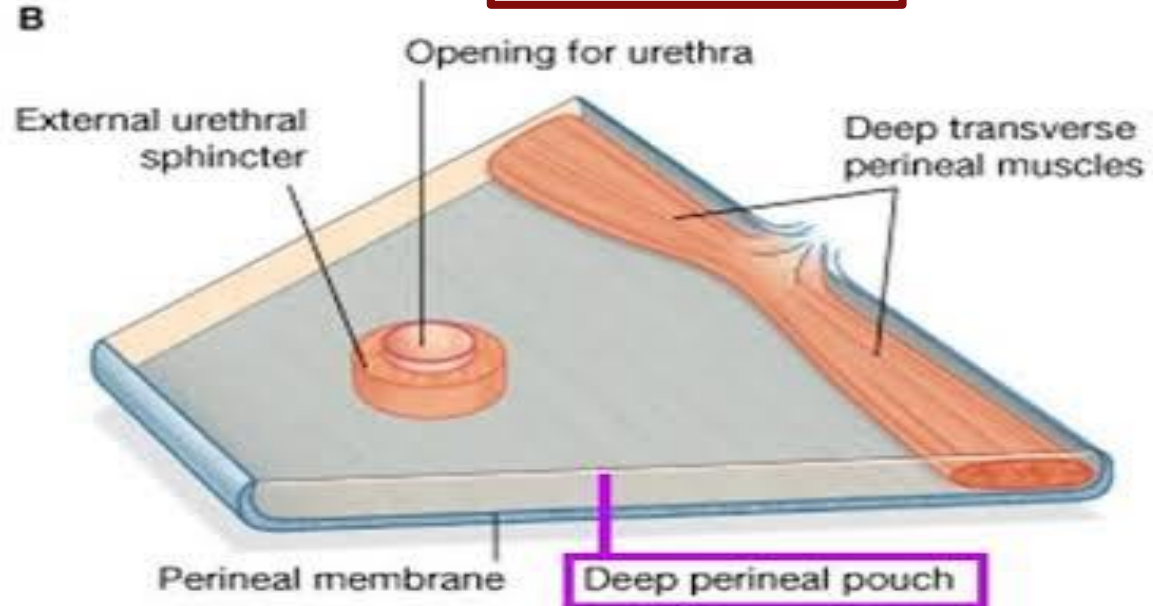
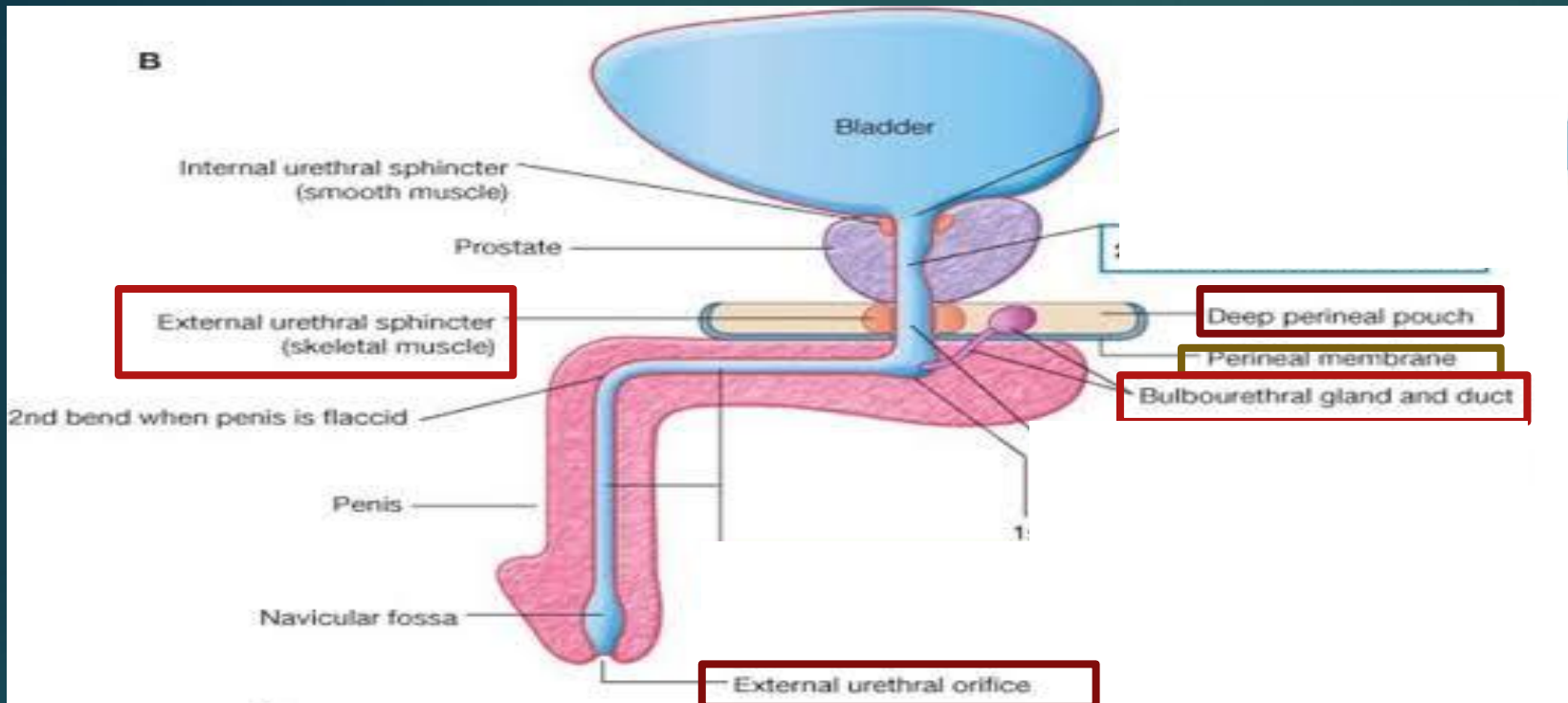
A



© Elsevier Ltd. Drake et al: Gray's Anatomy for Students www.studentconsult.com



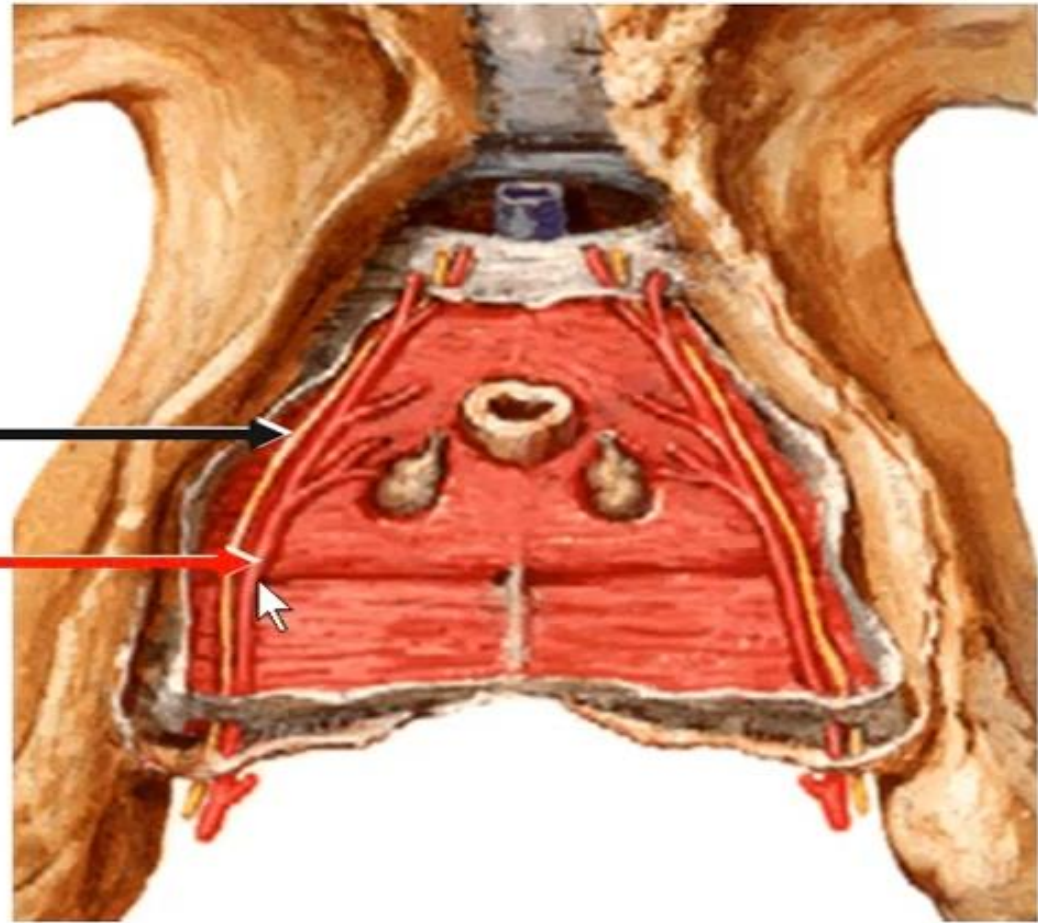
DEEP PERINEAL POUCH CONTENTS IN FEMALE



DEEP PERINEAL POUCH CONTENTS IN MALE

Vessels & Nerve in the Deep Perineal Pouch

1. Dorsal nerve of the
penis or clitoris
2. Internal pudendal
vessels & branches



Summary of the Contents of the Deep Perineal Pouch

1. Urethra

2. Vagina or bulbourethral glands

3. 2 Muscles:

a. External urethral sphincter:

around the urethra

b. Deep transverse perineal m

4. Internal pudendal vessels.

5. Dorsal nerve of penis or clitoris

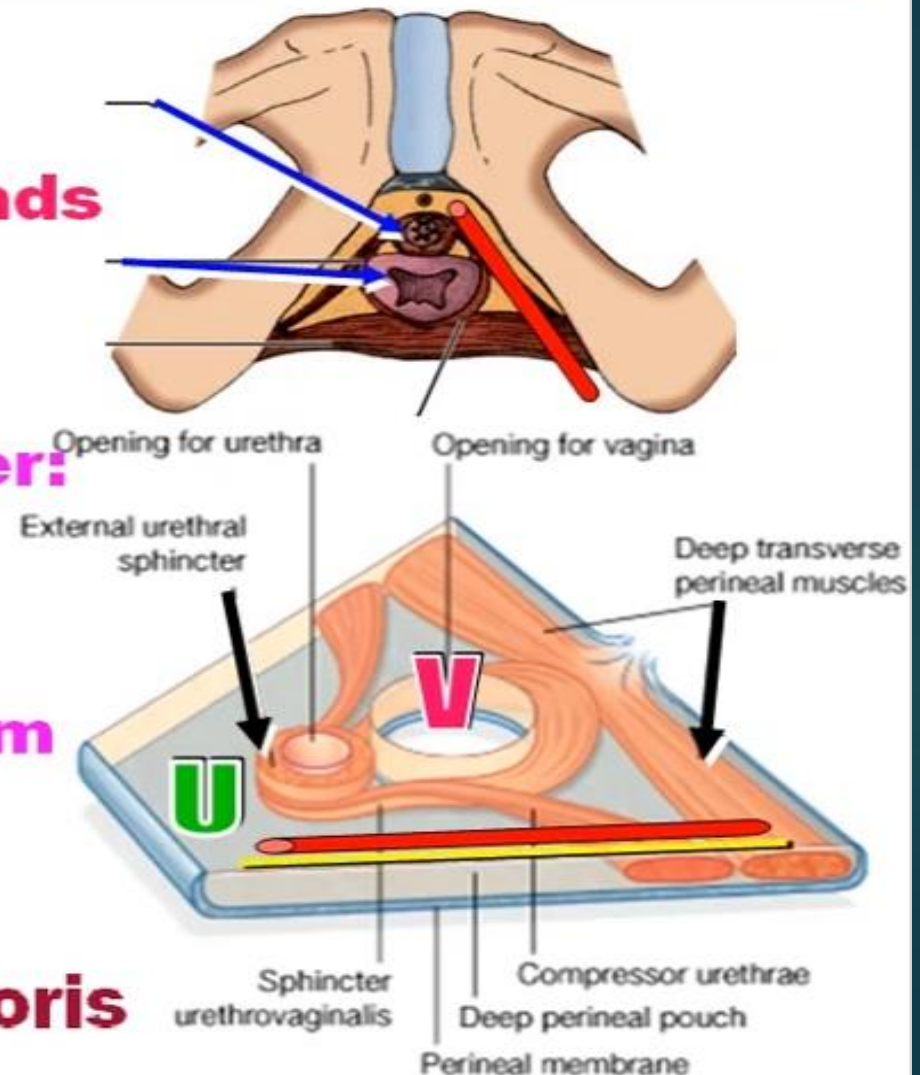


Table 15.1 Structures within the deep perineal pouch

| Male (Fig. 15.8A) | Female (Fig. 15.8B) |
|---|---|
| Membranous urethra | Urethra and vagina |
| Deep transverse perineal muscles and sphincter urethra muscle | Deep transverse perineal muscles and sphincter urethra muscle |
| Bulbourethral glands (of Cooper) | No glands |
| Branches of the internal pudendal artery (arteries to penis) | Branches of the internal pudendal artery (arteries to clitoris) |
| Branches of the pudendal nerve (dorsal nerve of penis) | Branches of the pudendal nerve (dorsal nerve of clitoris) |

Thank you!

