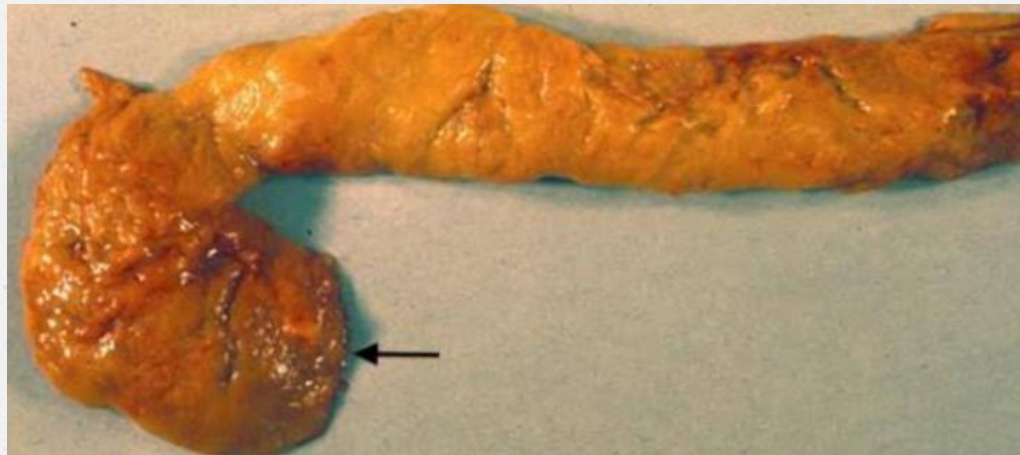




**GROSS ANATOMY OF  
PANCREAS**

# General features:

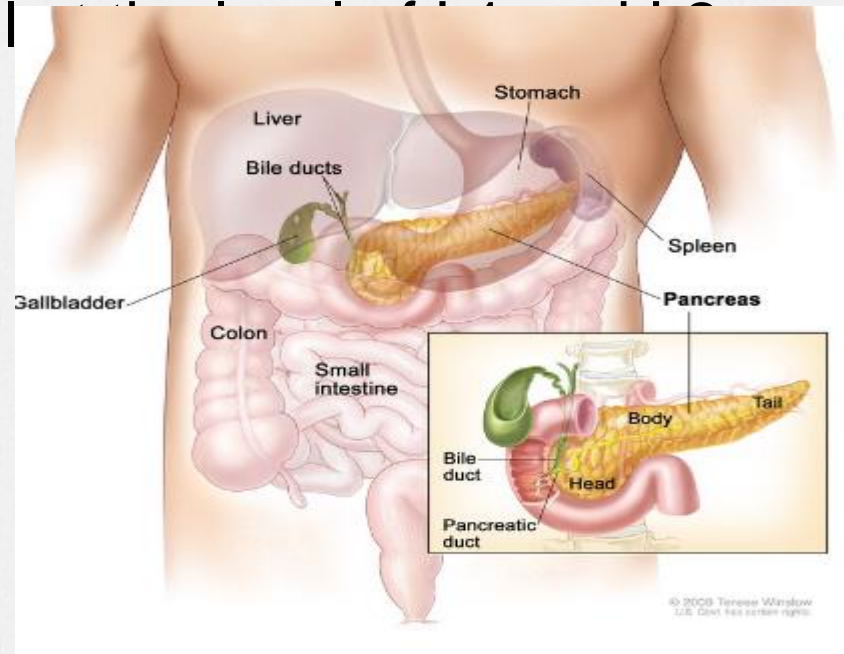
- Length; 12 to 15 cm
- Thickness : 1 inch approx
- Shape: like a flate pear or fish extended across the abdomen

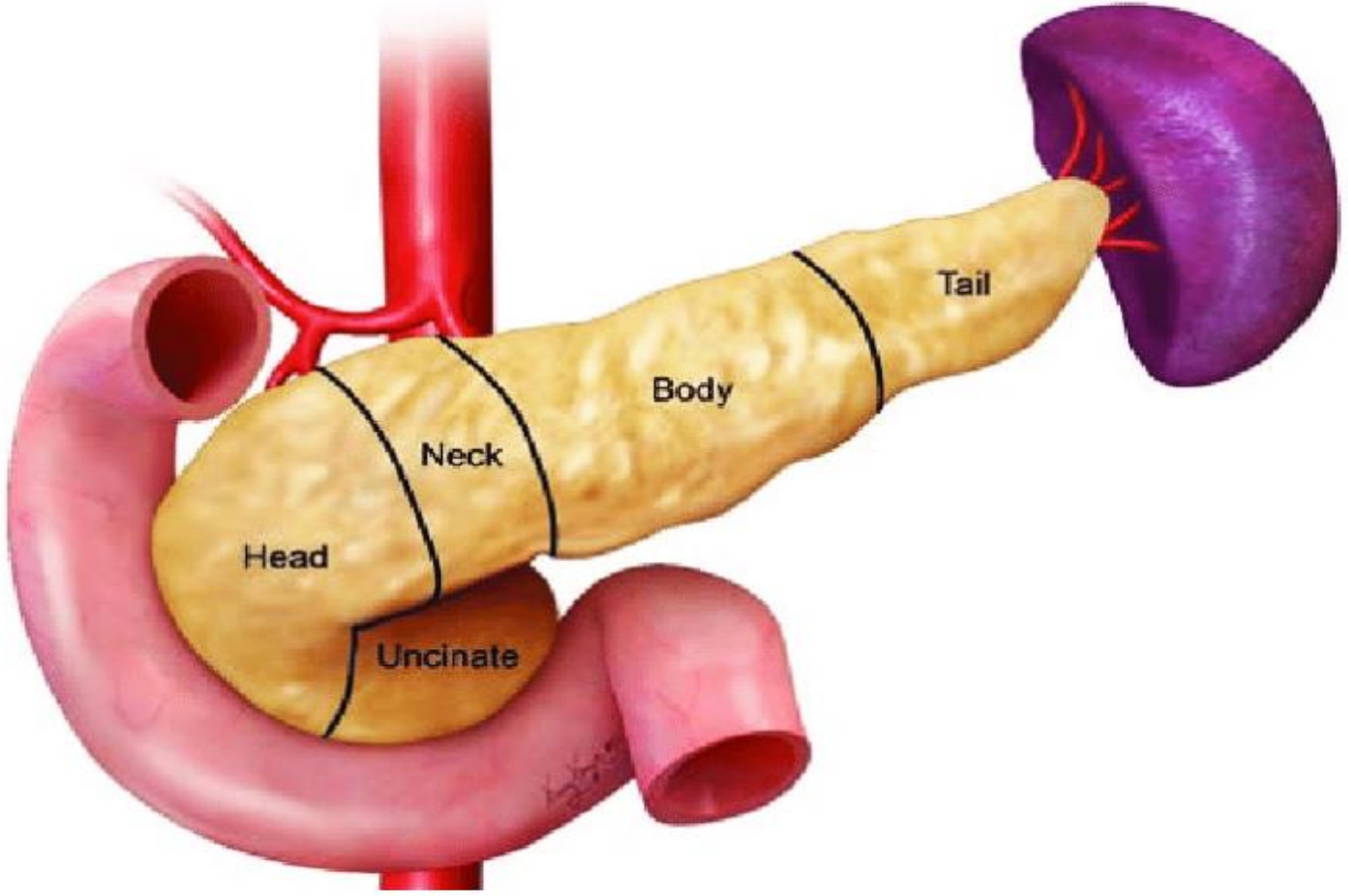




# location:

- Epigastrium and left hypochondrium region
- Behind the stomach and lesser sac
- Transversely across the posterior abdominal wall





**DUODENUM**

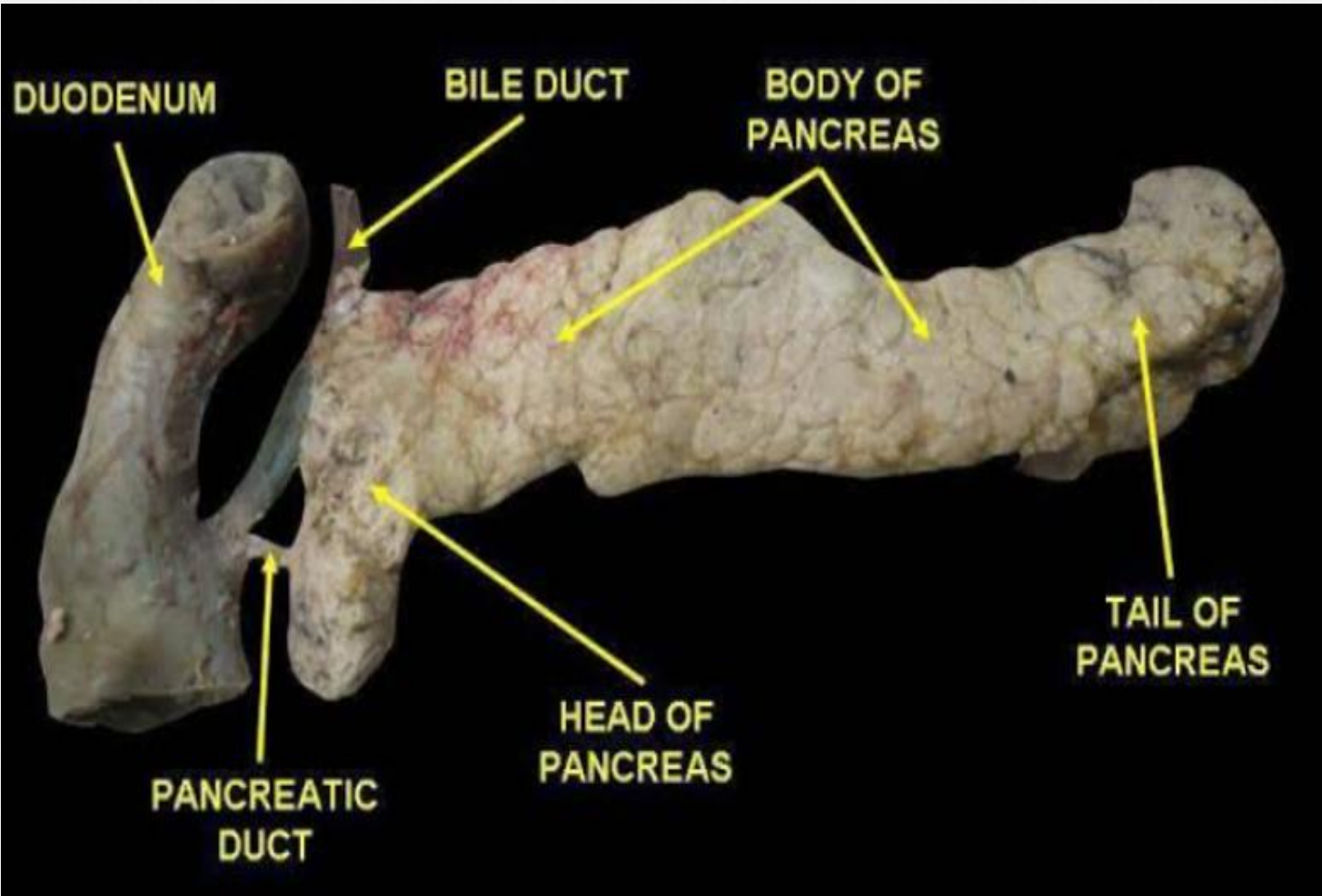
**BILE DUCT**

**BODY OF PANCREAS**

**TAIL OF PANCREAS**

**HEAD OF PANCREAS**

**PANCREATIC DUCT**



# Relations:

o Head :

o Anteriorly from right to left :

transverse colon

attachment of transverse mesocolon

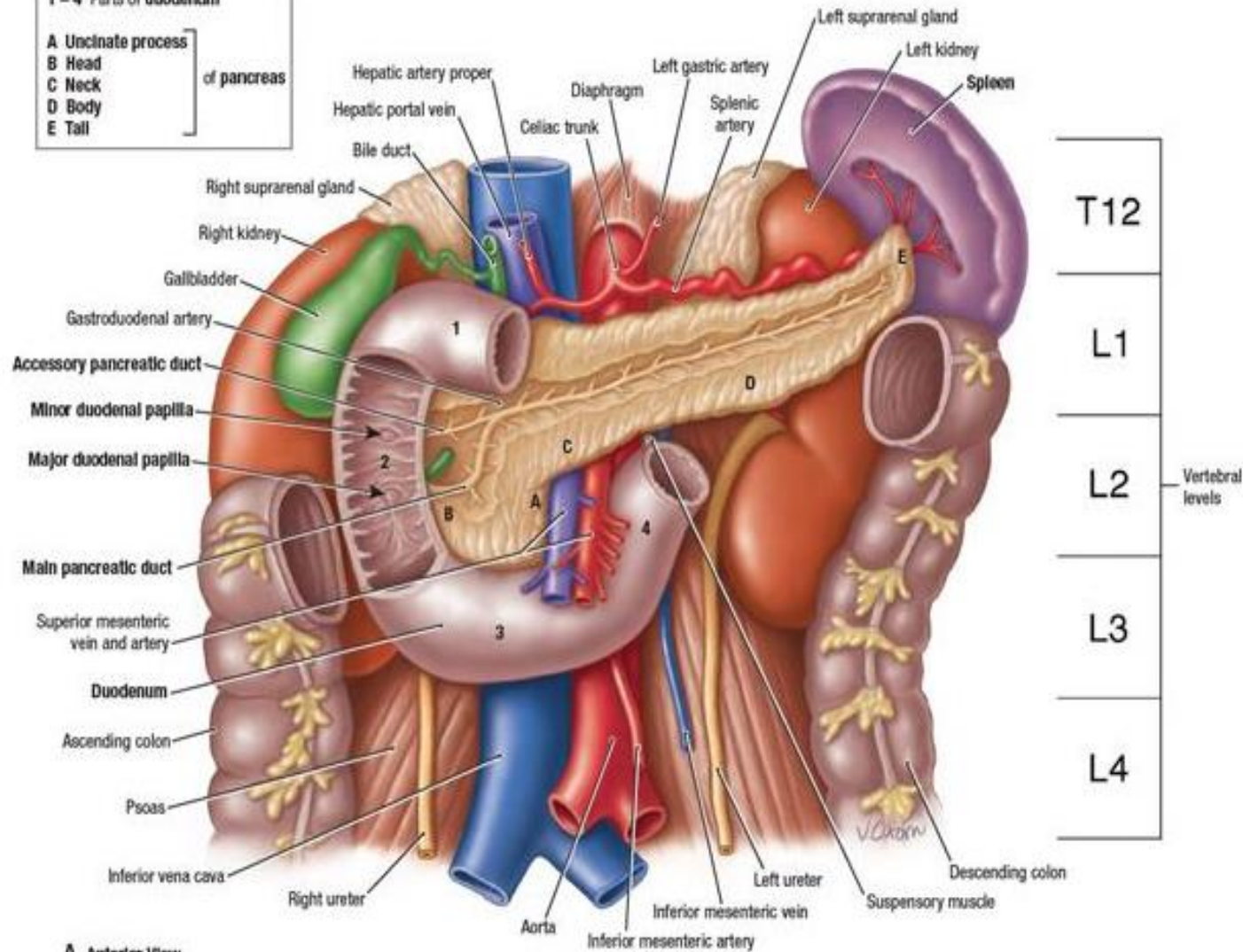
lesser sac

stomach

**1 - 4 Parts of duodenum**

- A** Uncinate process
- B** Head
- C** Neck
- D** Body
- E** Tail

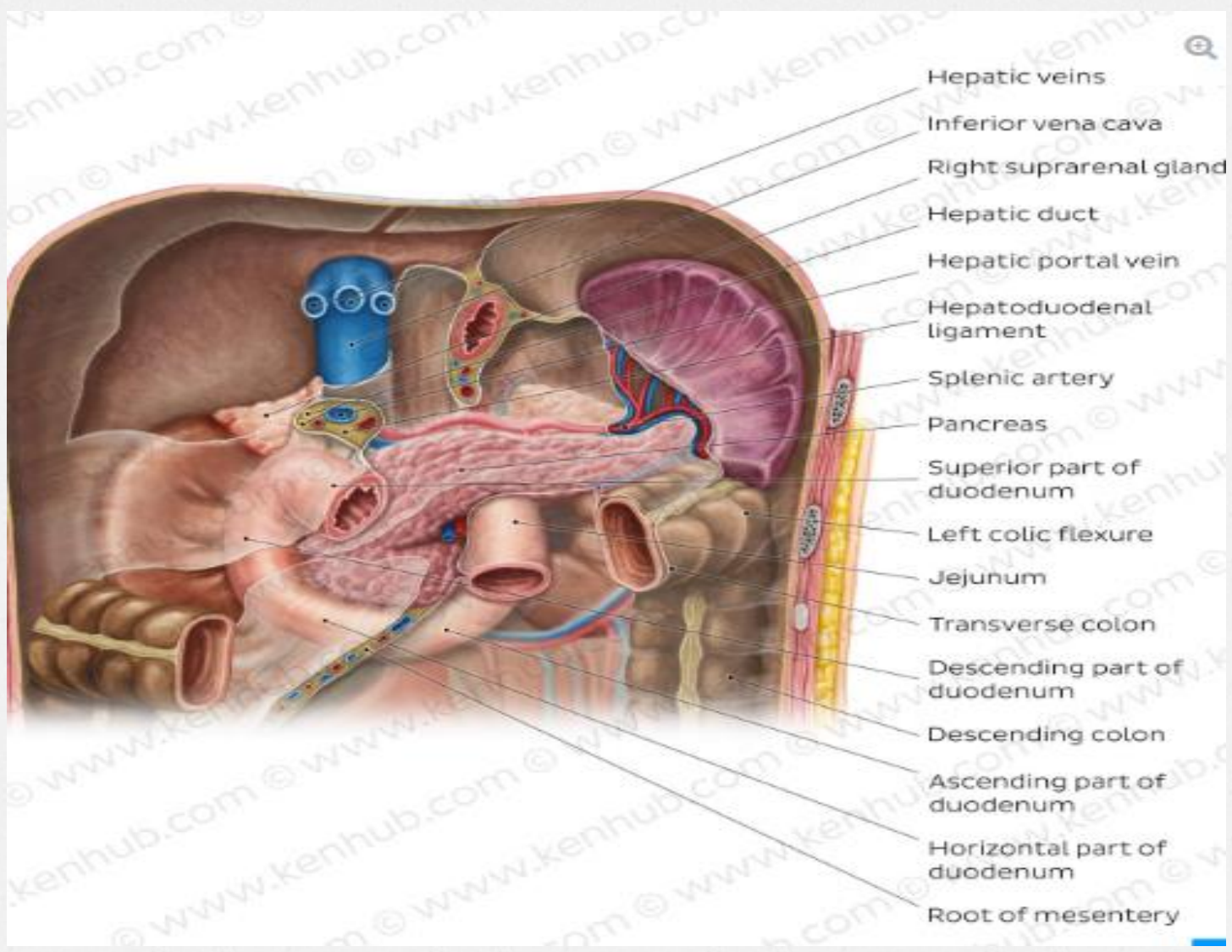
of pancreas



**A. Anterior View**



- o Posteriorly from right to left :
- o Bile duct
- o Portal and splenic veins
- o Inferior vena cava
- o Aorta
- o Origin of SMA
- o Left psoas muscle
- o Left suprarenal gland and kidney
- o Hilum of spleen

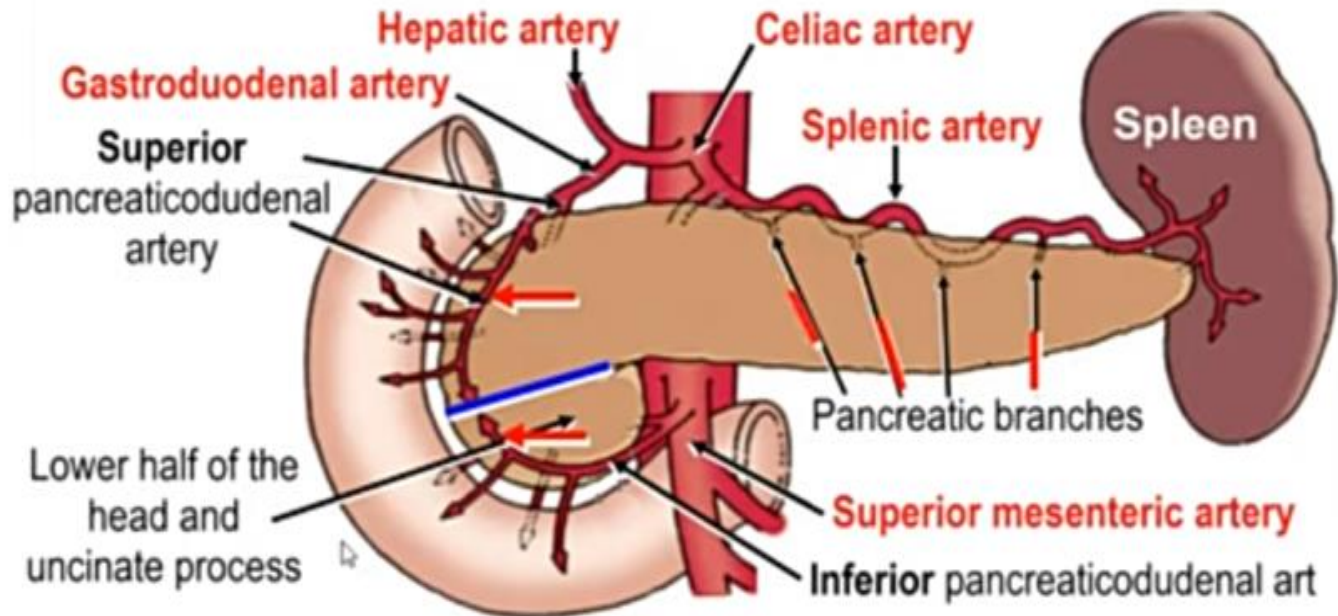


- Hepatic veins
- Inferior vena cava
- Right suprarenal gland
- Hepatic duct
- Hepatic portal vein
- Hepatoduodenal ligament
- Splenic artery
- Pancreas
- Superior part of duodenum
- Left colic flexure
- Jejunum
- Transverse colon
- Descending part of duodenum
- Descending colon
- Ascending part of duodenum
- Horizontal part of duodenum
- Root of mesentery

# ARTERIAL SUPPLY

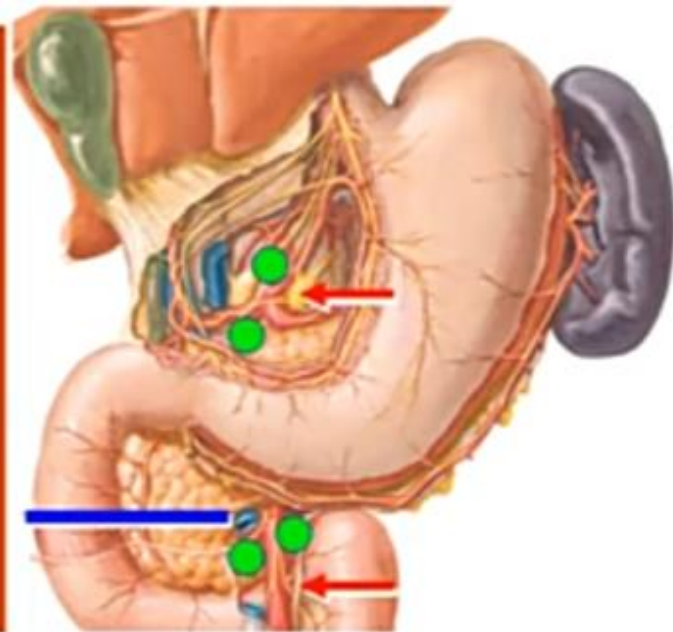
By celiac artery **except** the lower ½ of the head & the uncinate process:

1. Superior pancreaticoduodenal artery: **upper ½ of the head**
2. Inferior pancreaticoduodenal artery: **lower ½ of the head & the uncinate process**
3. Pancreatic branches of the splenic artery: **neck, body & tail**



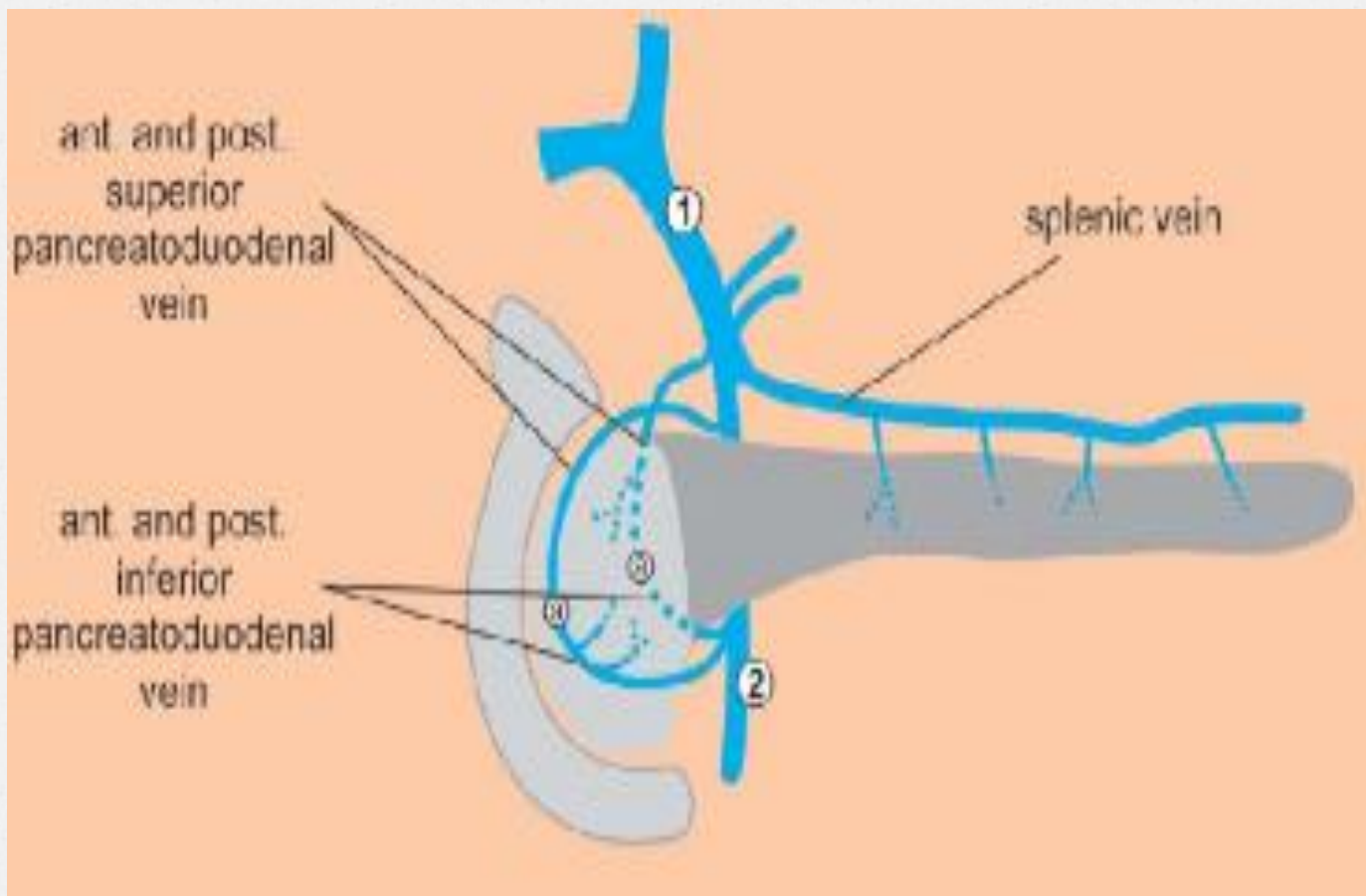
## **NERVE SUPPLY**

- 1. Celiac plexus:** all except the lower  $\frac{1}{2}$  of the head & the uncinete process
- 2. Superior mesenteric plexus:** lower  $\frac{1}{2}$  of the head & the uncinete process

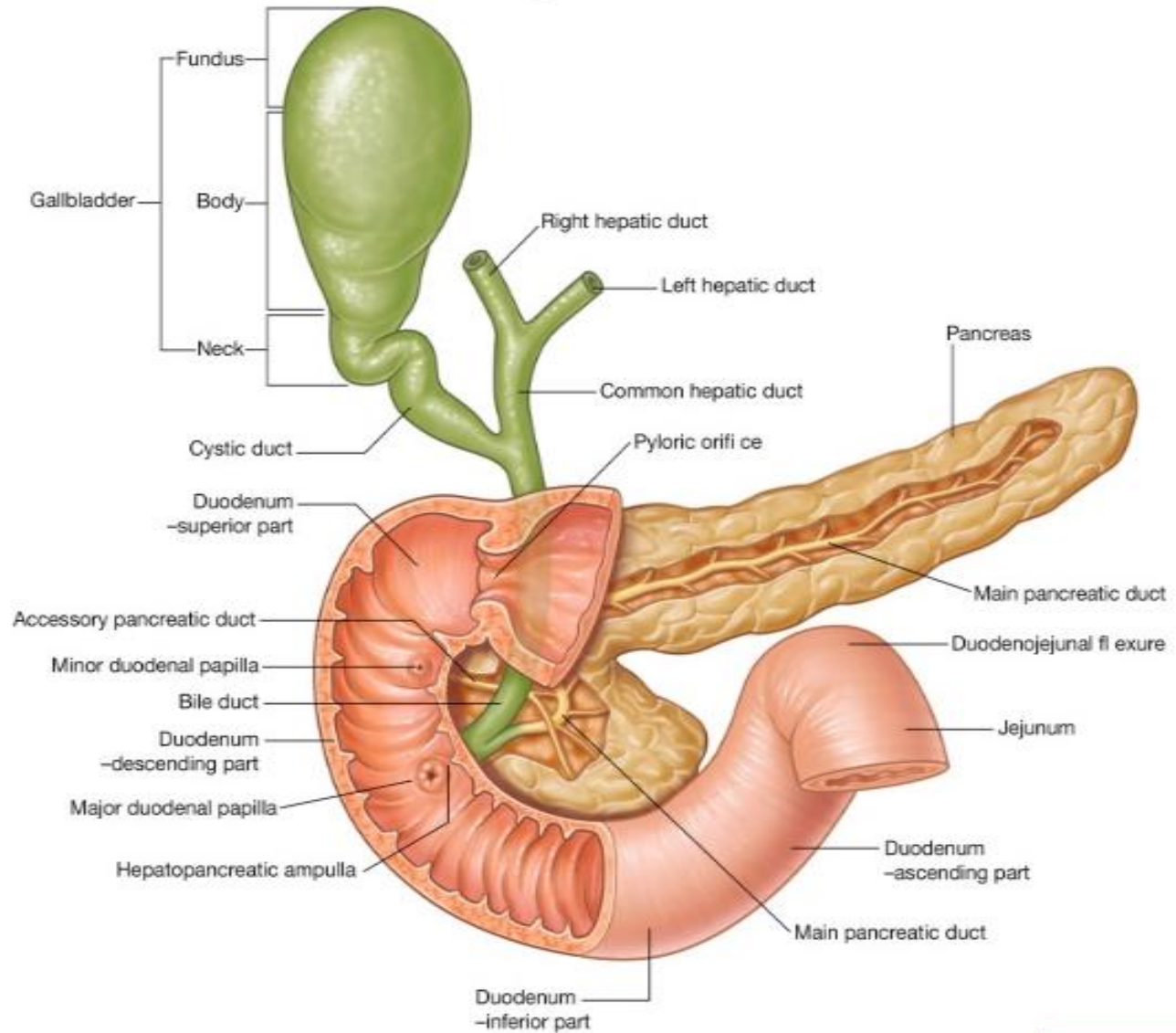


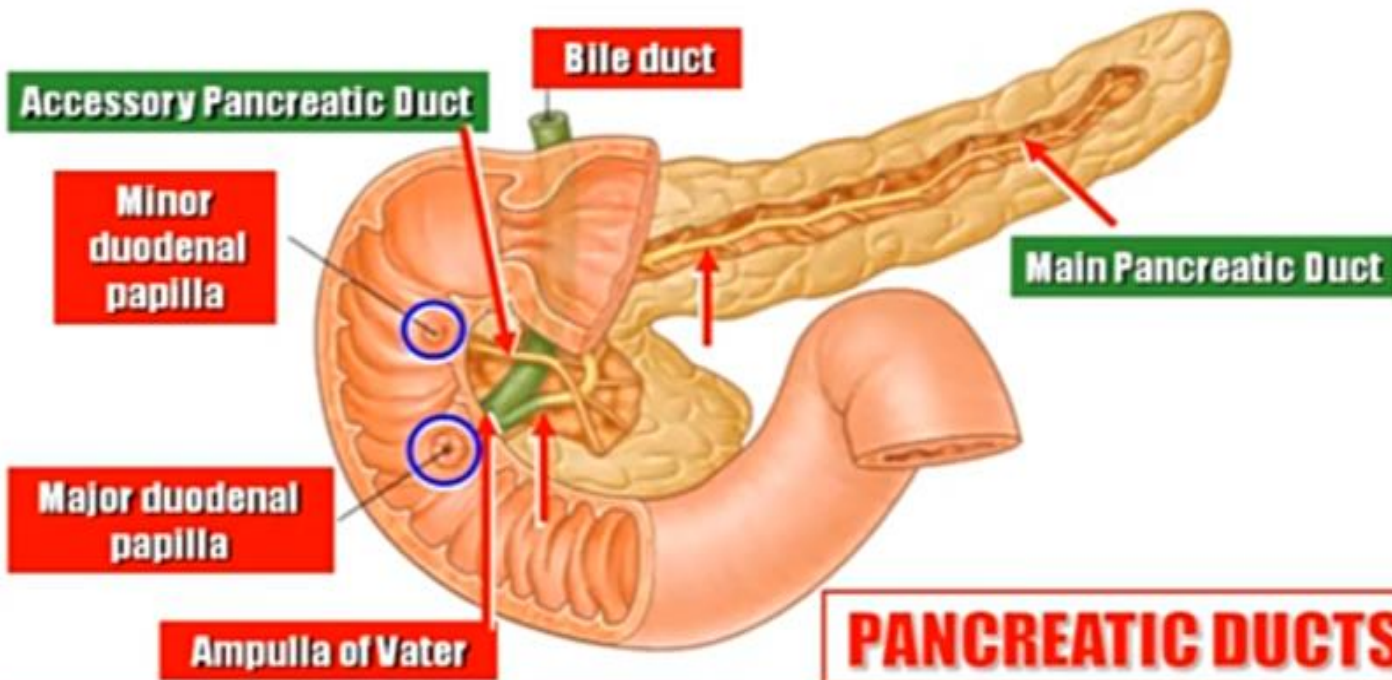
## **LYMPH DRAINAGE**

- 1. Upper  $\frac{1}{2}$  of the head, Neck, Body & Tail:** celiac lymph nodes
- 2. Lower  $\frac{1}{2}$  of the head & Uncinate Process:** superior mesenteric lymph nodes



# Pancreas and gallbladder





### 1. Main Pancreatic Duct:

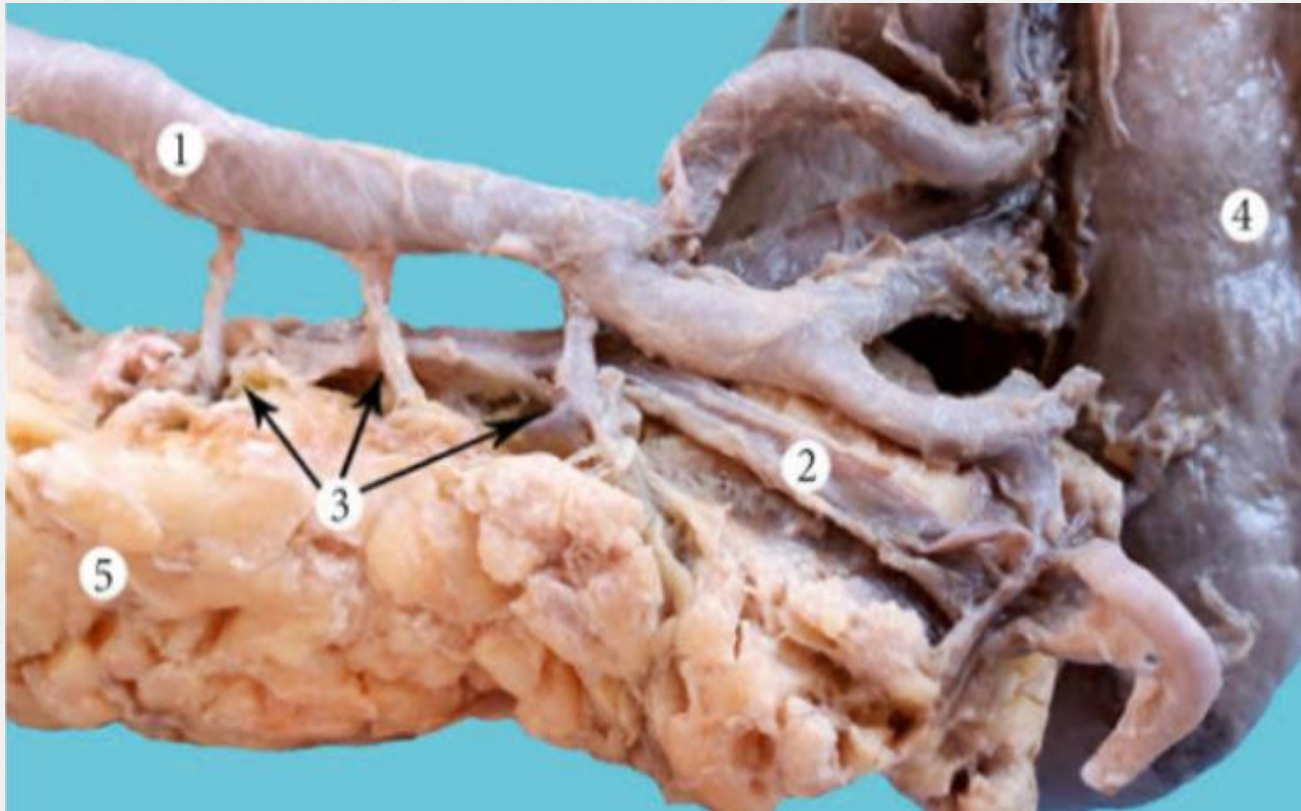
Fuses with the bile duct to form ampulla of Vater which opens in major duodenal papilla in the middle of the posteromedial surface of the 2<sup>nd</sup> part of the duodenum

### 2. Accessory Pancreatic Duct:

Arises in the head and opens in the minor duodenal papilla 1" above the main duct









Thank You:)