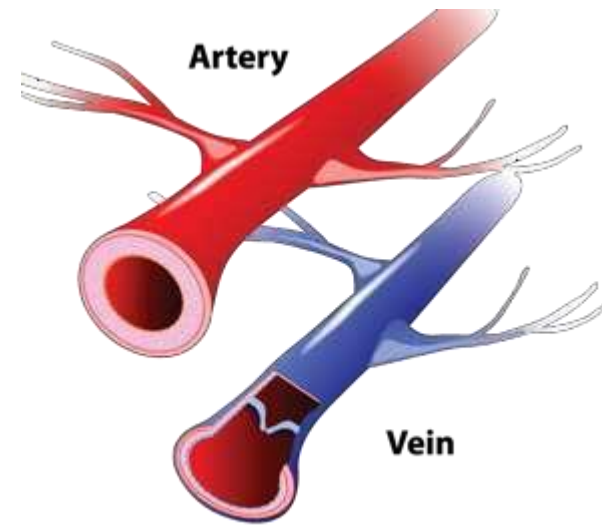




IV

Injection

Intravenous is the term
means “into the vein”



What is IV infusion?

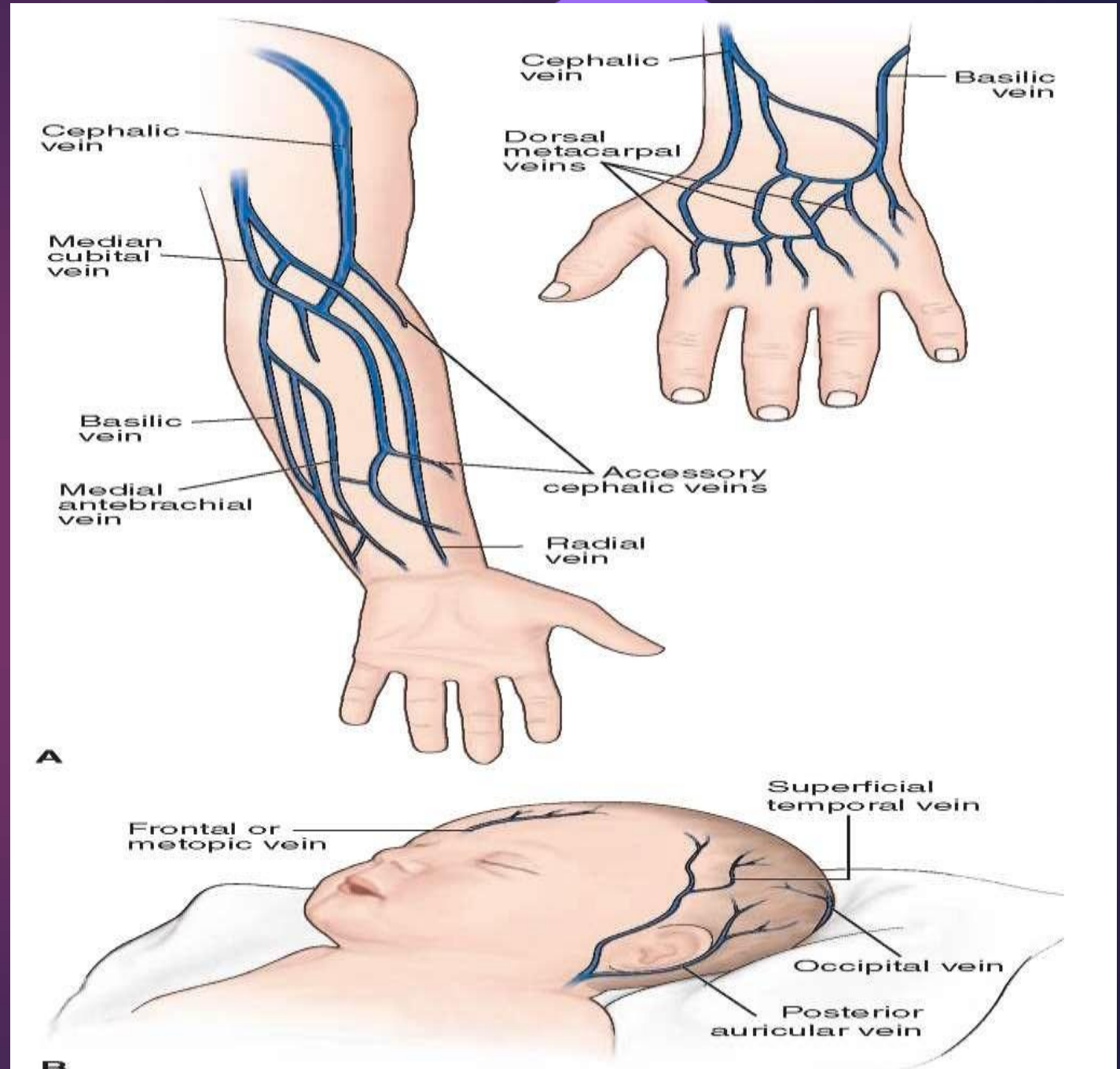
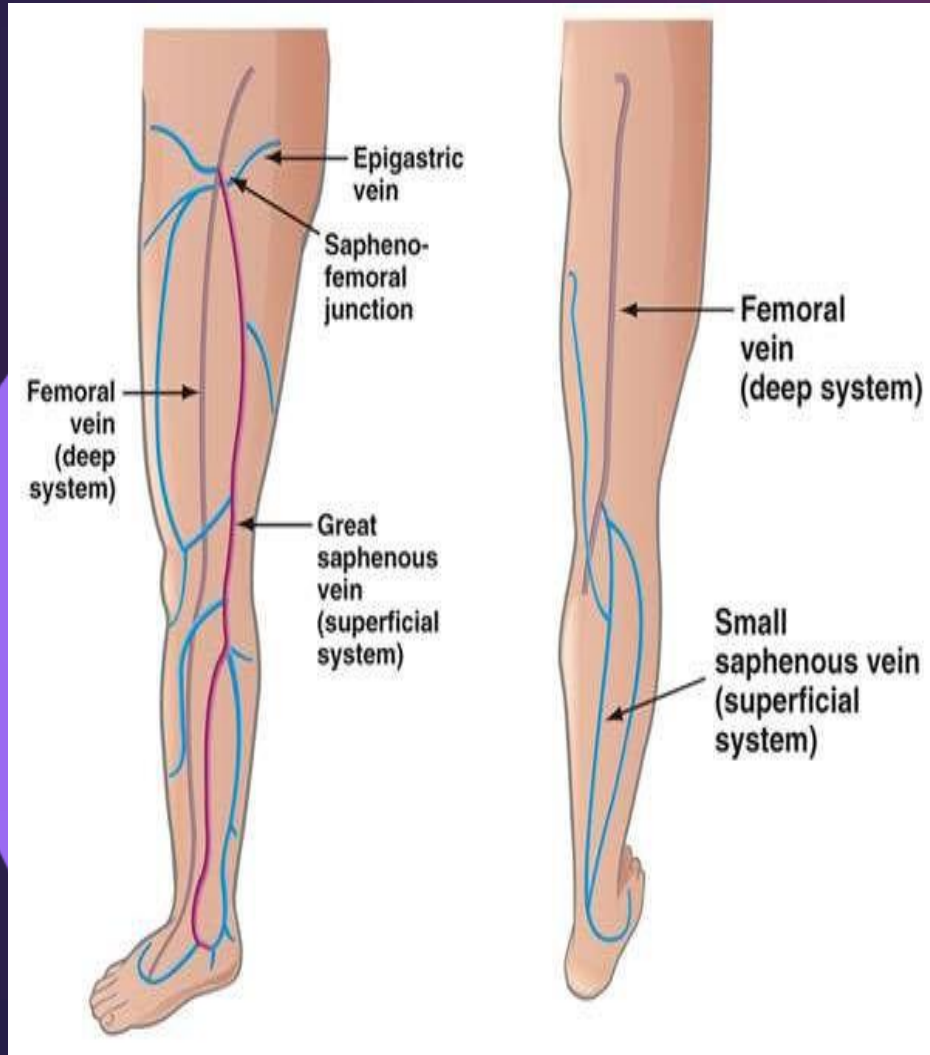
An IV infusion is a slow drip of medication into the vein over a set period of time to deliver a constant volume of therapy.



Purposes of Intravenous Injection

- Quickly sends a medication directly into the bloodstream.
- Can administer large amount.
- More reliable
- Quick action.

Sites



Equipment's

A tray contains:

- **Drip chamber**
- **Tubing**
- **Syringe and Needle**
- **Adhesive tape**
- **Tourniquet**
- **Spirit**
- **Antiseptic and 2 x 2 gauze**
- **Kidney tray**
- **Drugs**



Preliminary Assessment



Procedure

Select a suitable vein for venipuncture.



Prepare the venipuncture site



Apply tourniquet above 2 inch from venipuncture site



Select and palpate a prominent vein.



Cleanse the skin with an alcohol swab .Allow the site todry.



Done gloves.



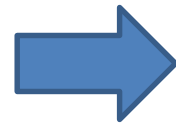


Perform the venipuncture.





Apply Pressure on Vein



Remove tourniquet and attach the tubing





Start infusion and fix the tubing



Observe the venipuncture site for signs of infiltration



Remove your gloves and dispose of them appropriately



Special Consideration

The header features a dark purple background with several overlapping circles in shades of purple and blue. A vertical red rectangle is positioned in the top right corner.

Disadvantage



Infection



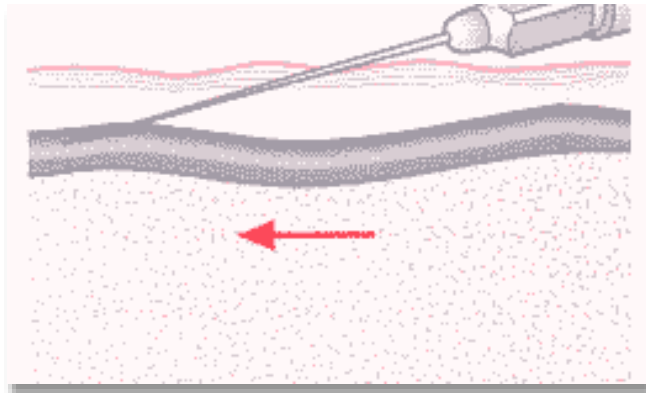
Painful & Fearful



Supervisor required to administer



Disadvantage



Irreversible



Coagulation





**If you have any
question, Please
feel free to ask
us!!!!!!!**

