

# **LIVER**

**Sobia Hina**

**KGMC**



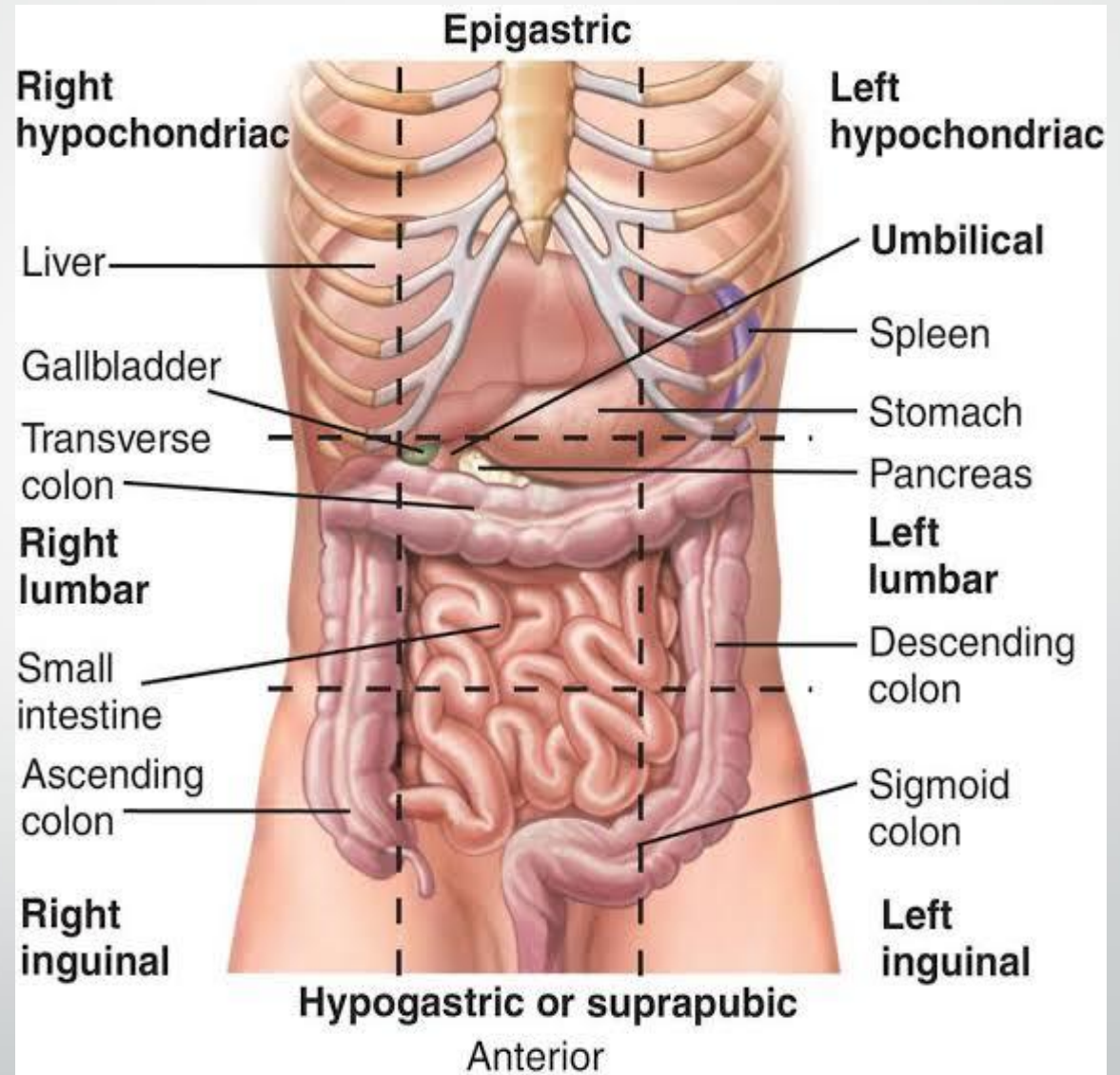


# **LIVER**

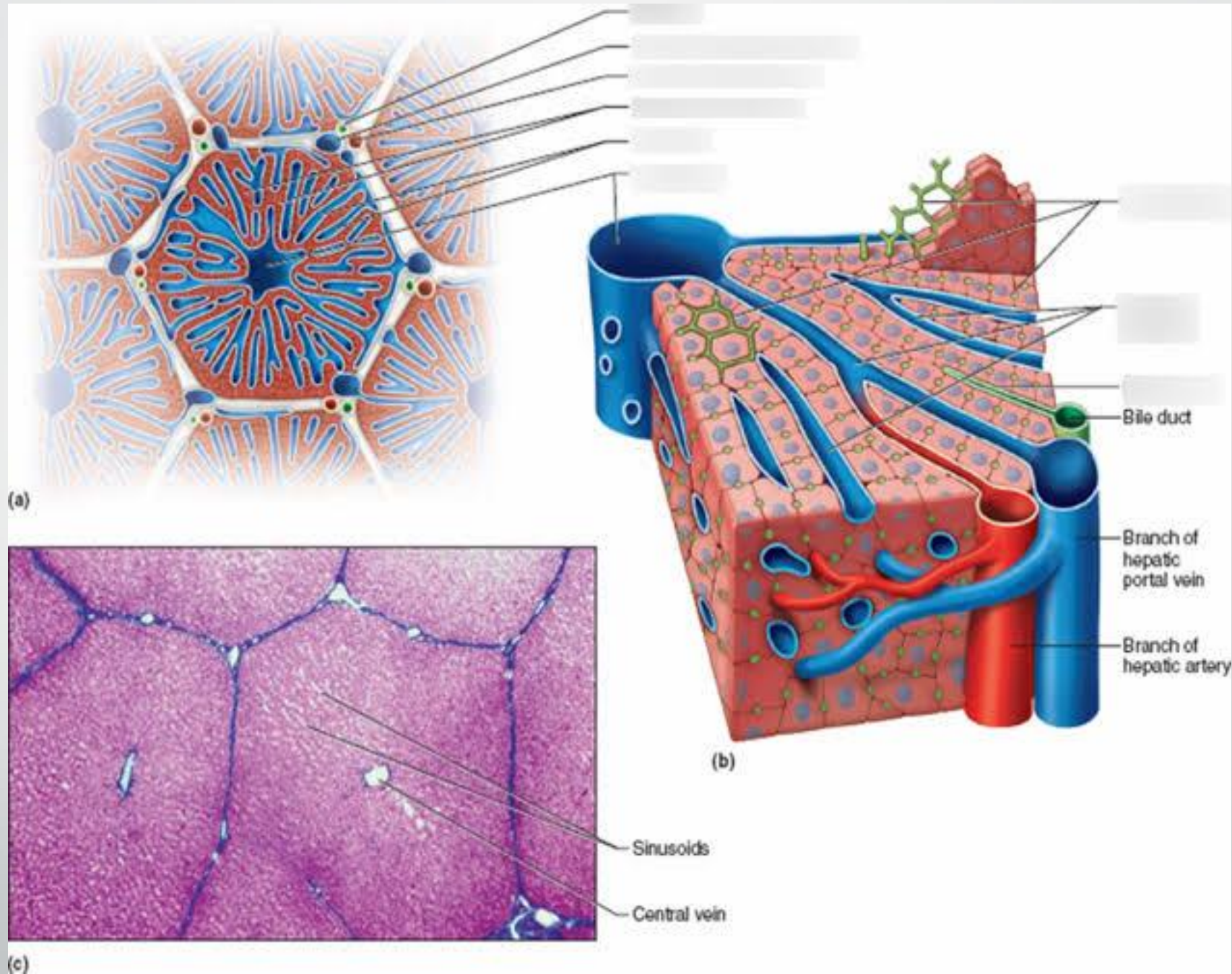
- Liver is the largest gland in human body
- It weights 1500 grams
- It comprises 2.5% of the total body weight
- In a mature fetus it may even serve as hematopoietic organ
- Except fat it absorb all the nutrients from GIT by portal system
- Liver stores glycogen and secrete bile for emulsification of fats

# LOCATION

- Lies mainly in right upper quadrant of abdomen under cover of 7-11 ribs on right side occupies **RIGHT HYPOCHONDRIDIUM** and **EPIGASTRIUM**

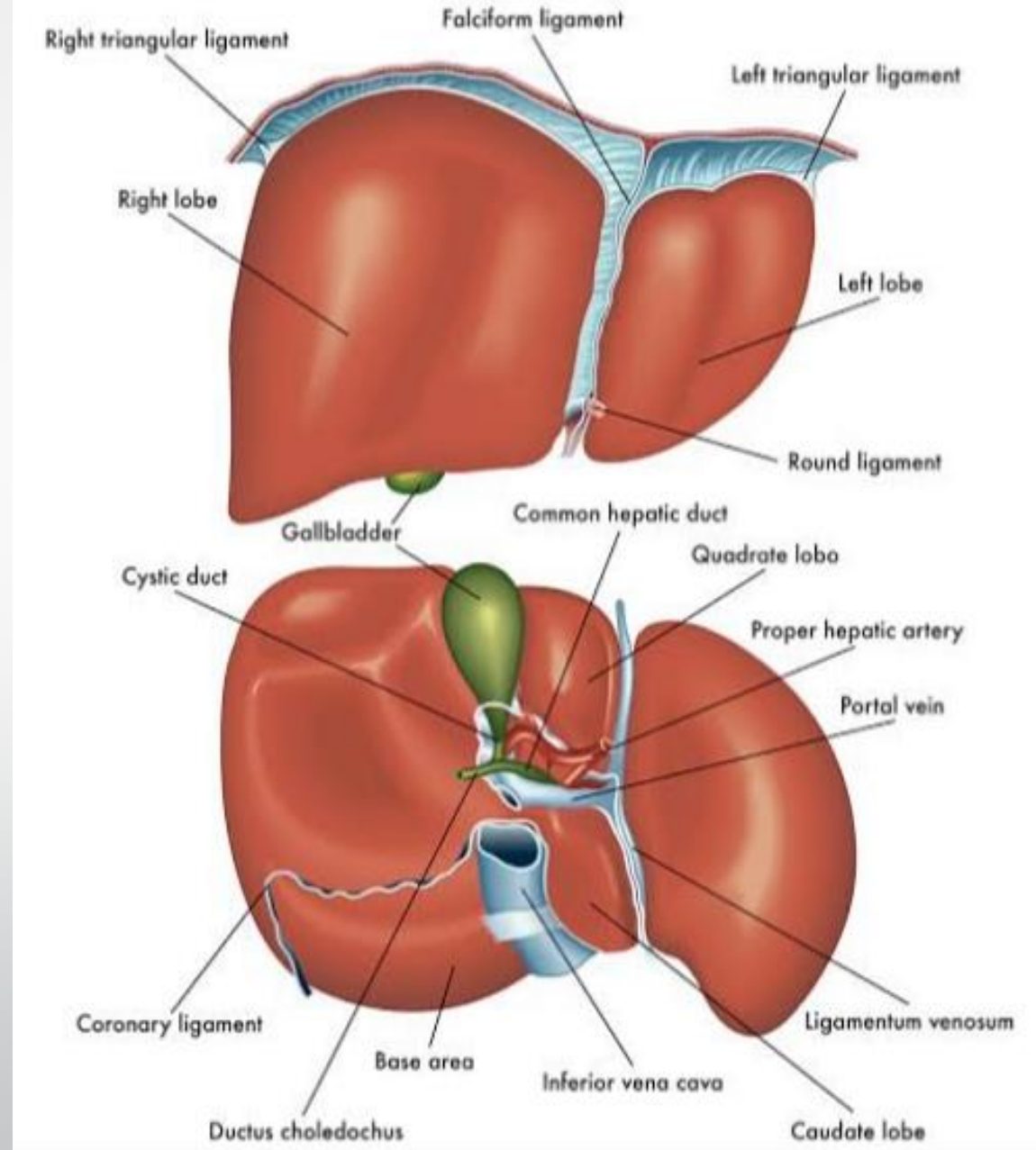


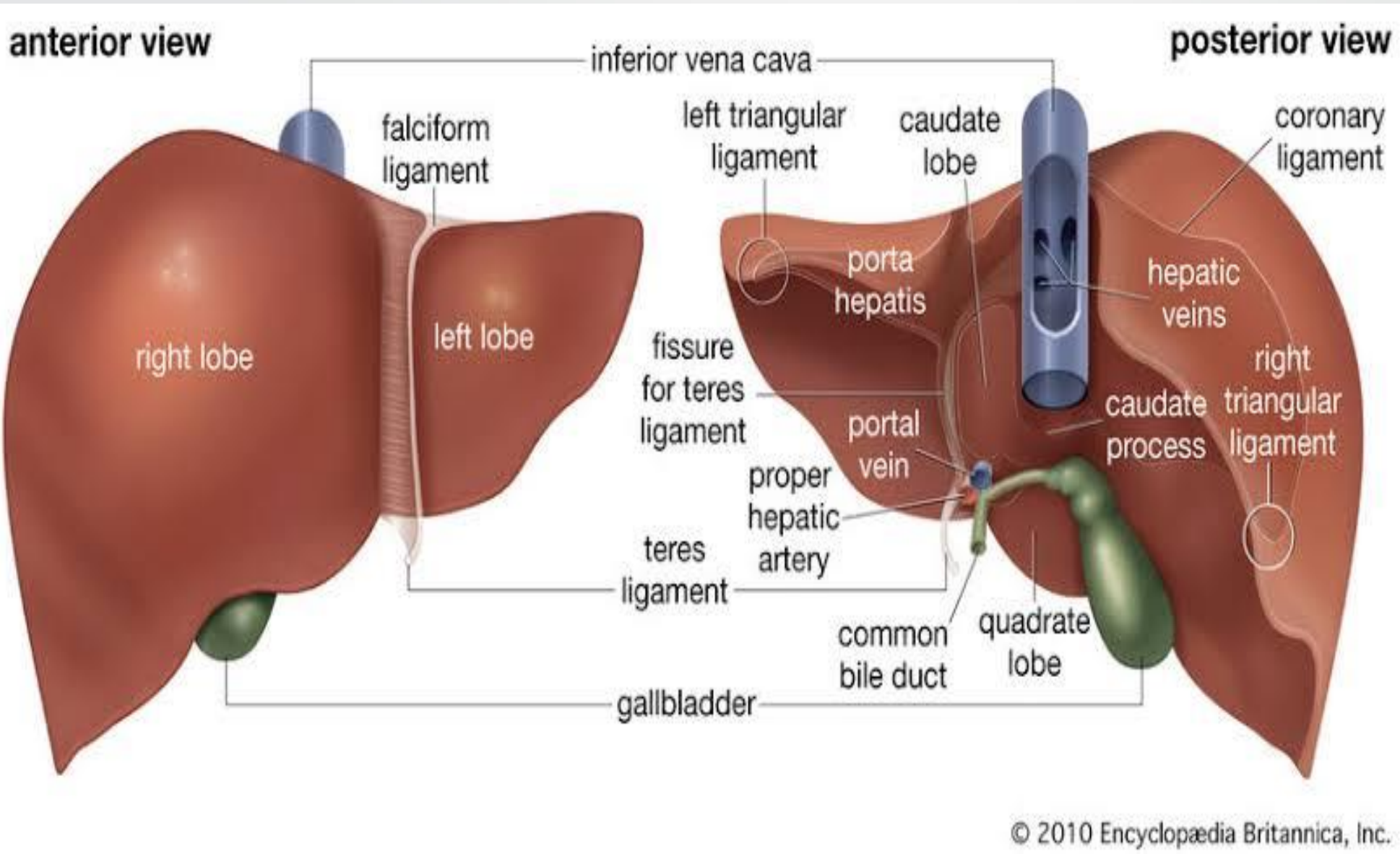
- Liver lobules
- Central vein
- Portal canal
- sinusoids

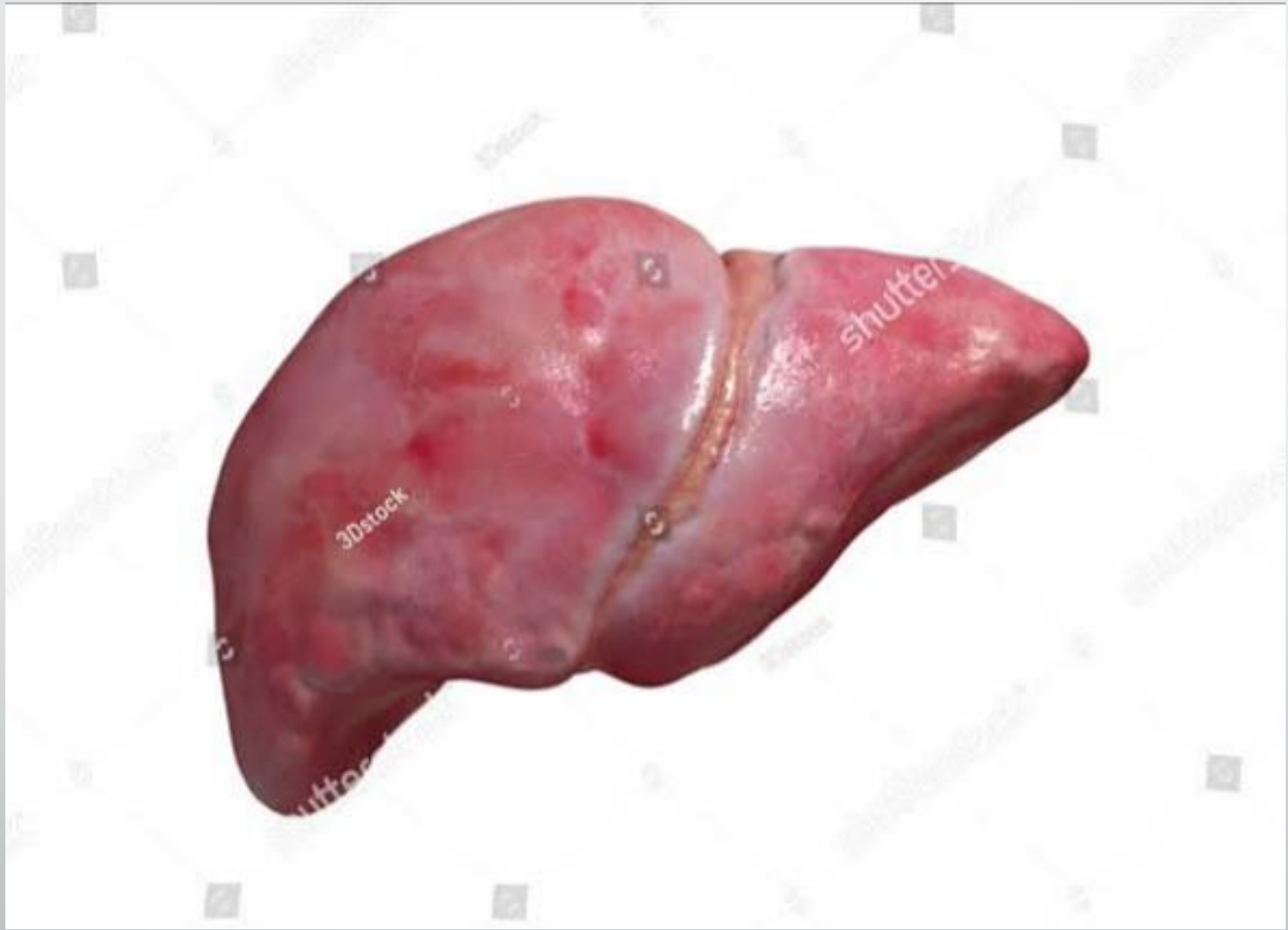


# ANATOMICAL FEATURES

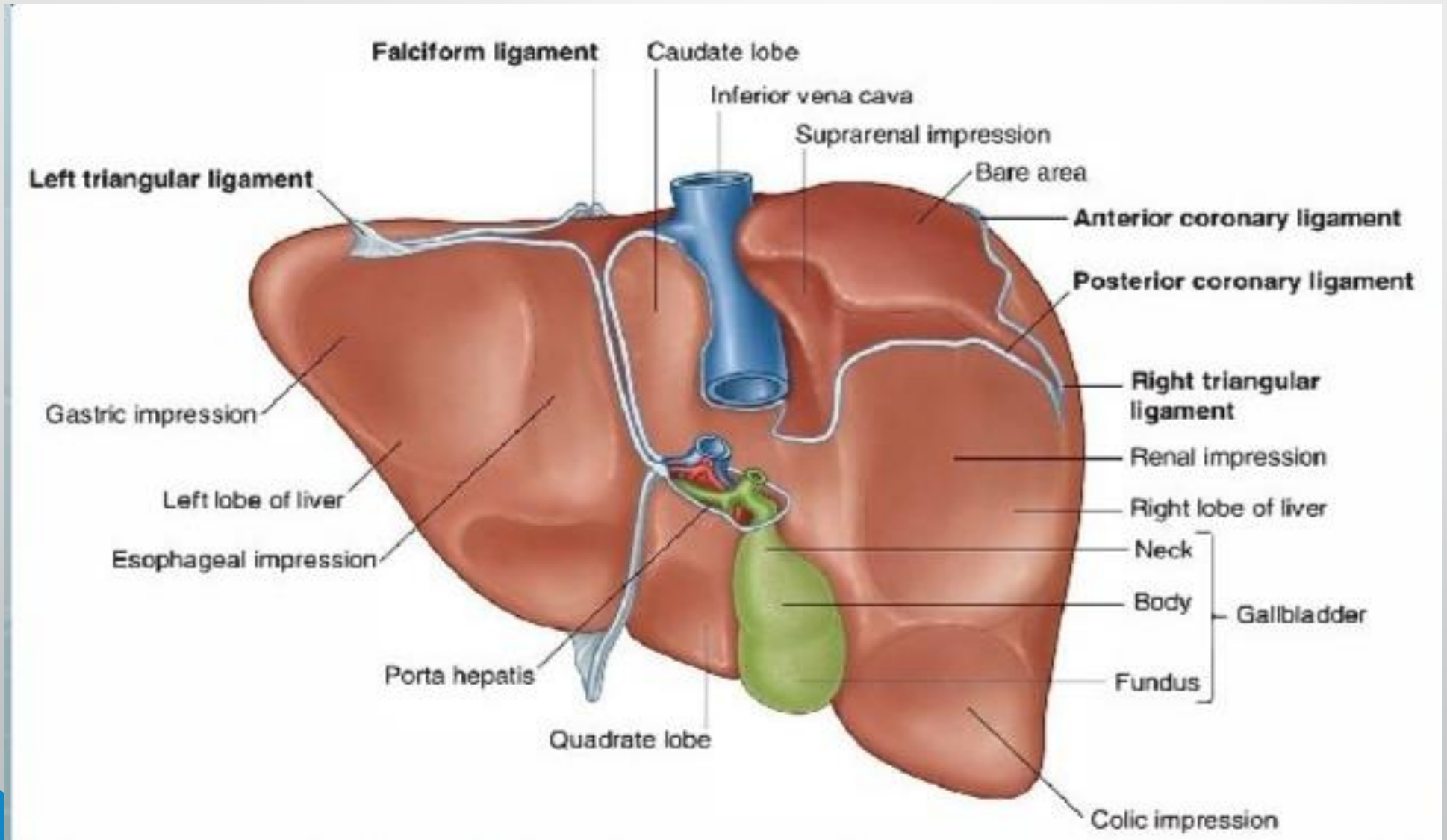
- SURFACES
- Diaphragmatic/anterio superior
- Visceral/posterior inferior
- LOBES
- MAJOR LOBES
- Right
- Left
- ACCESSORY LOBES
- Caudate
- Quadrate
- BORDER
- Inferior border



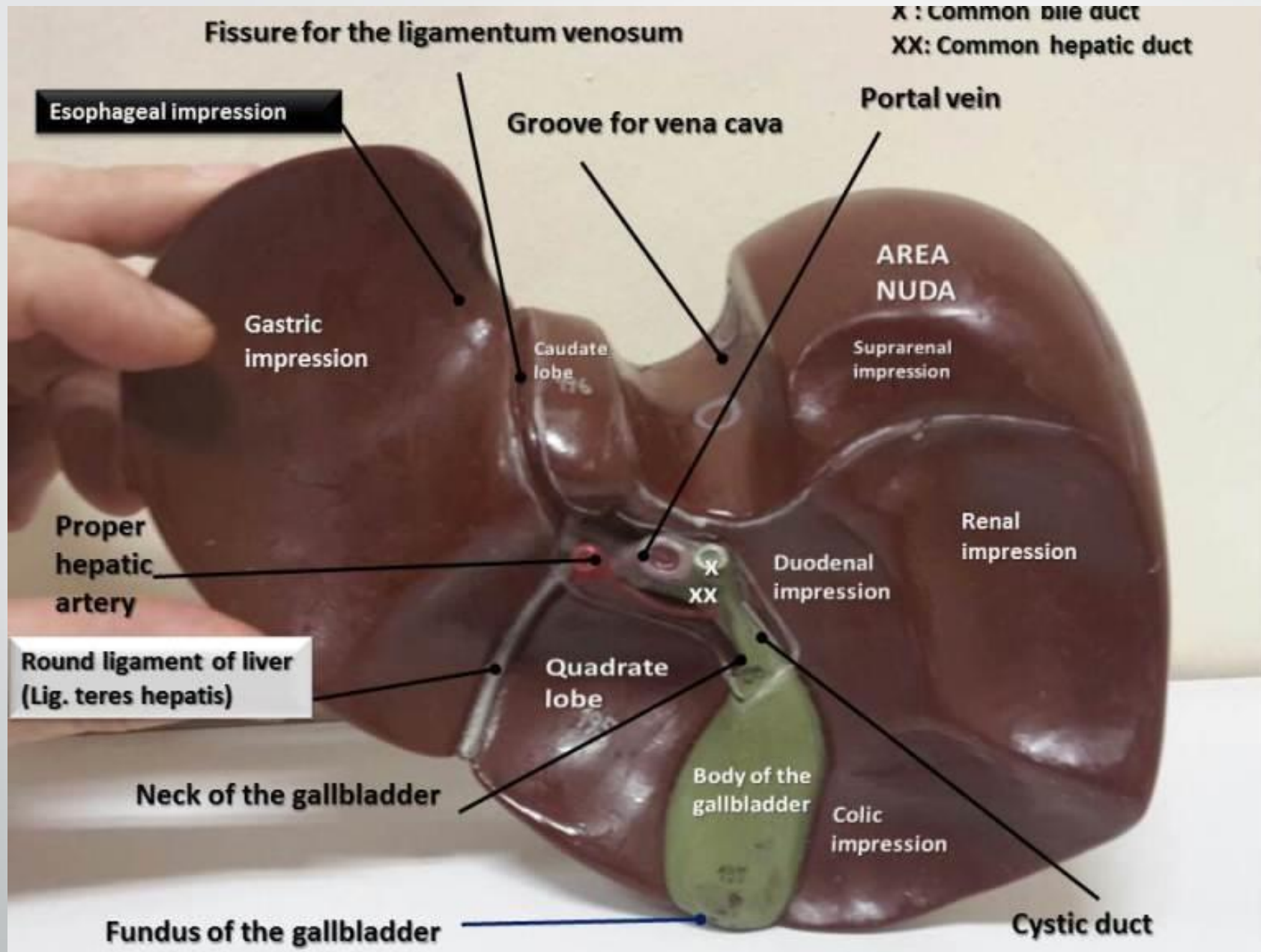


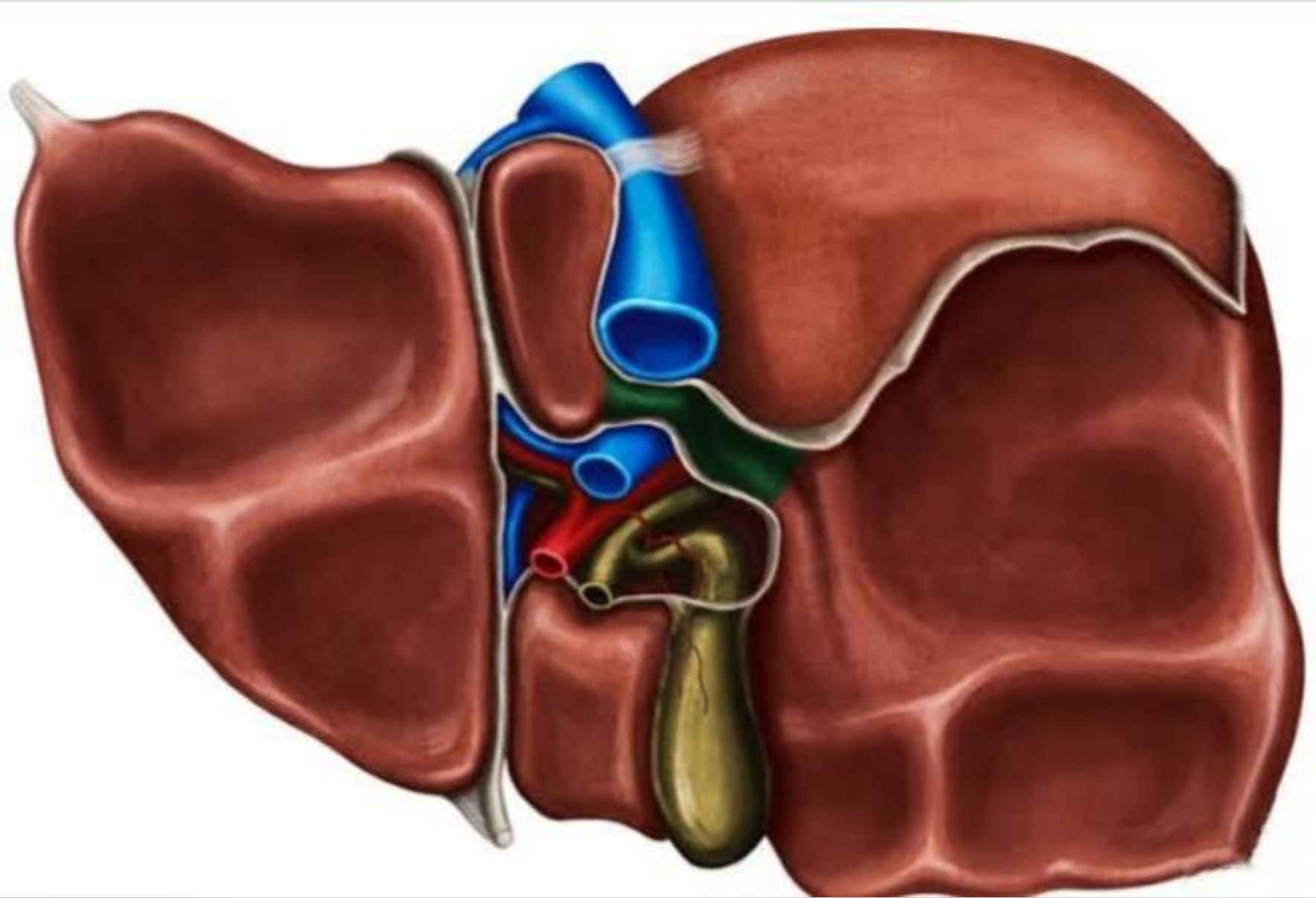


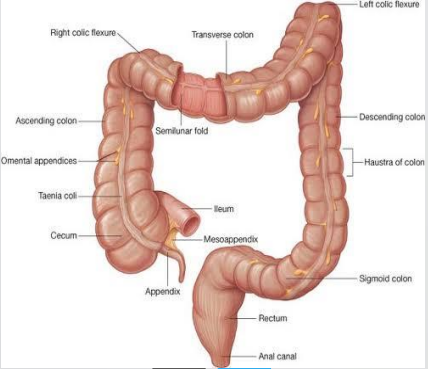
# IMPRESSIONS











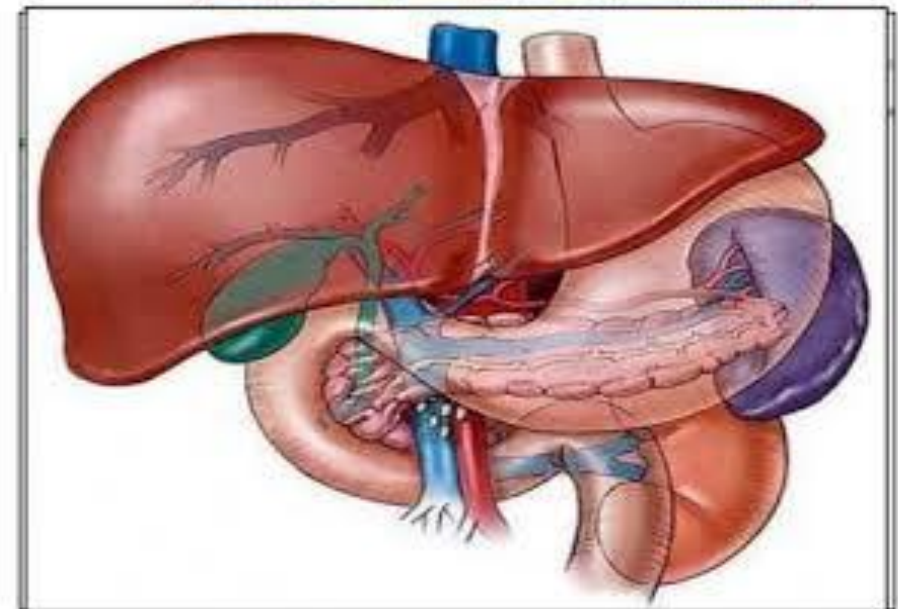
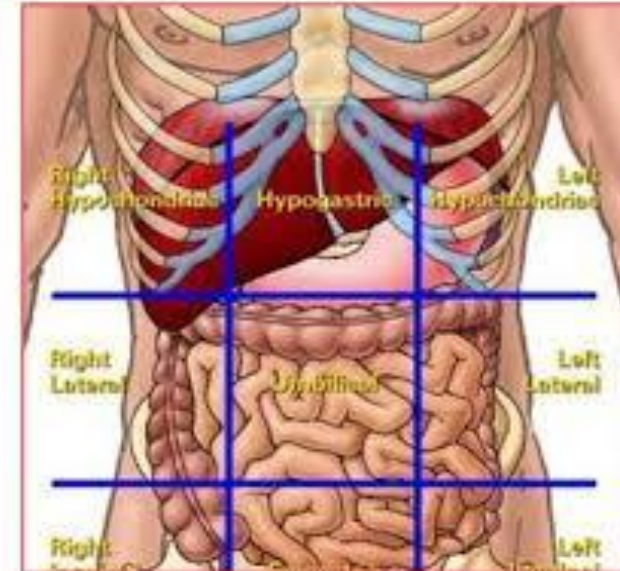
- **Anterior:**

1. Diaphragm,
2. Right and left costal margins,
3. Right and left pleura,
4. Right and left lungs,
5. Xiphoid process,
6. Anterior abdominal wall.

- **Posterior:**

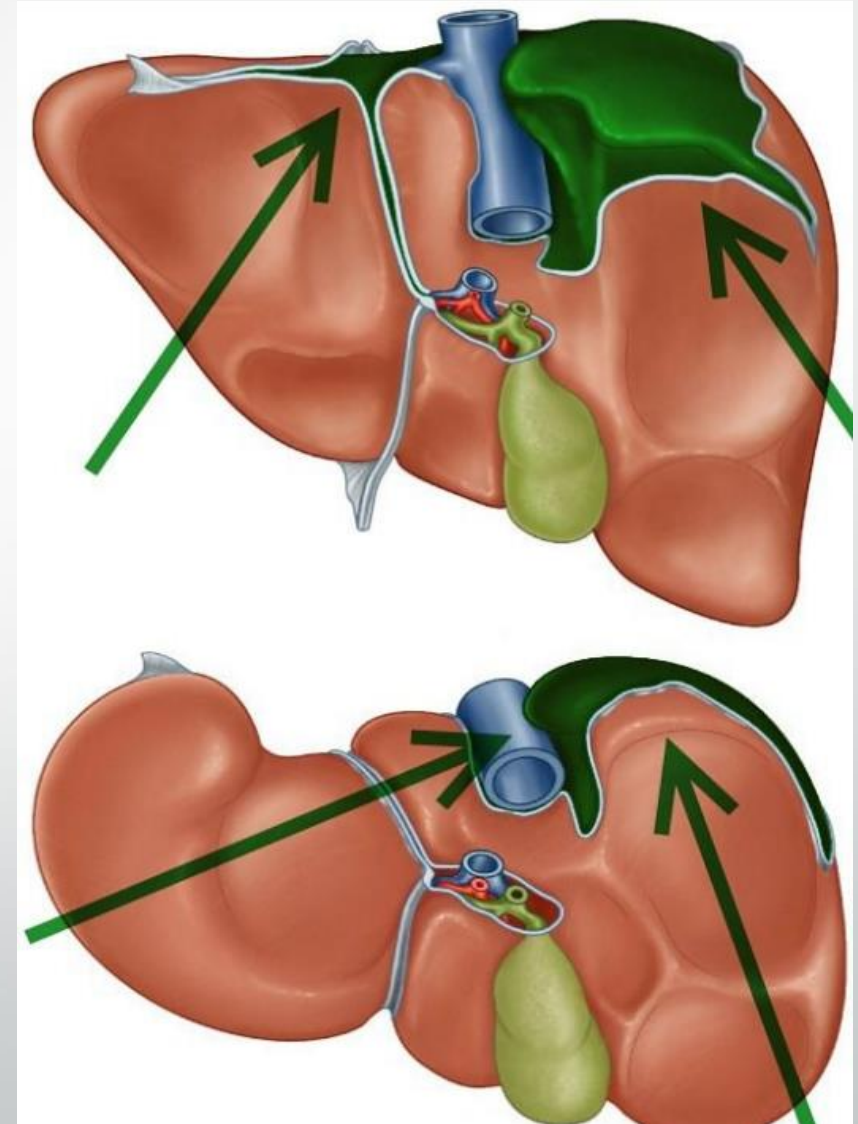
1. Diaphragm,
2. Right kidney,
3. Right suprarenal gland,
4. Right colic (hepatic) flexure,
5. Duodenum,
6. Gallbladder,
7. Inferior vena cava,
8. Esophagus and
9. Fundus of the stomach.

# Relations of Liver



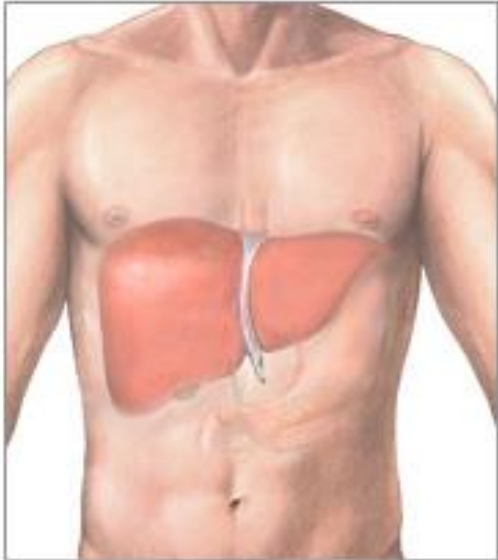
# **BARE AREA OF LIVER**

- Present on the diaphragmatic surface of liver and is directly in contact with the undersurface of diaphragm devoid of peritoneum
- It lies between the two layers of cardiac ligaments

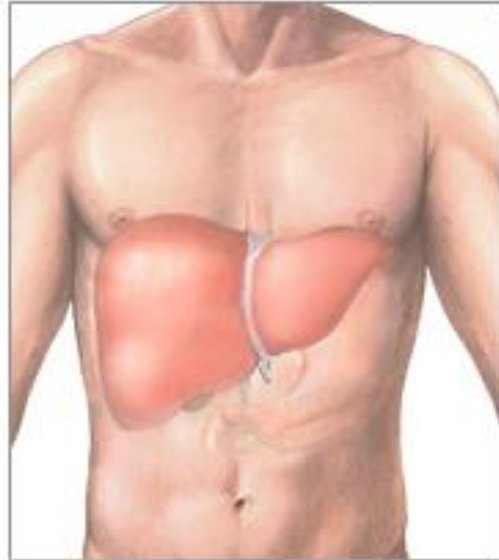


# CLINICALS

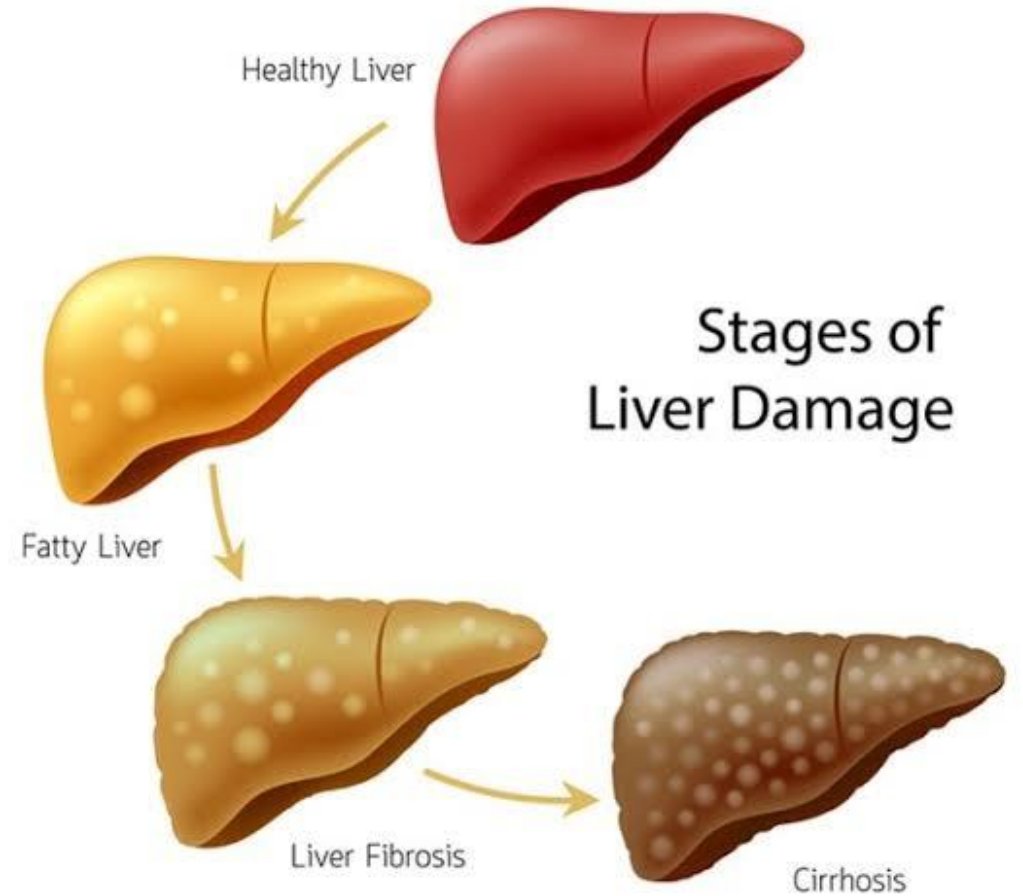
Normal liver



Enlarged liver due to hepatomegaly



ADAM.



**WHEN THE  
BRAIN & HEART  
FIGHT...  
THE LIVER  
ALWAYS SUFFERS**



***THANK YOU***

