

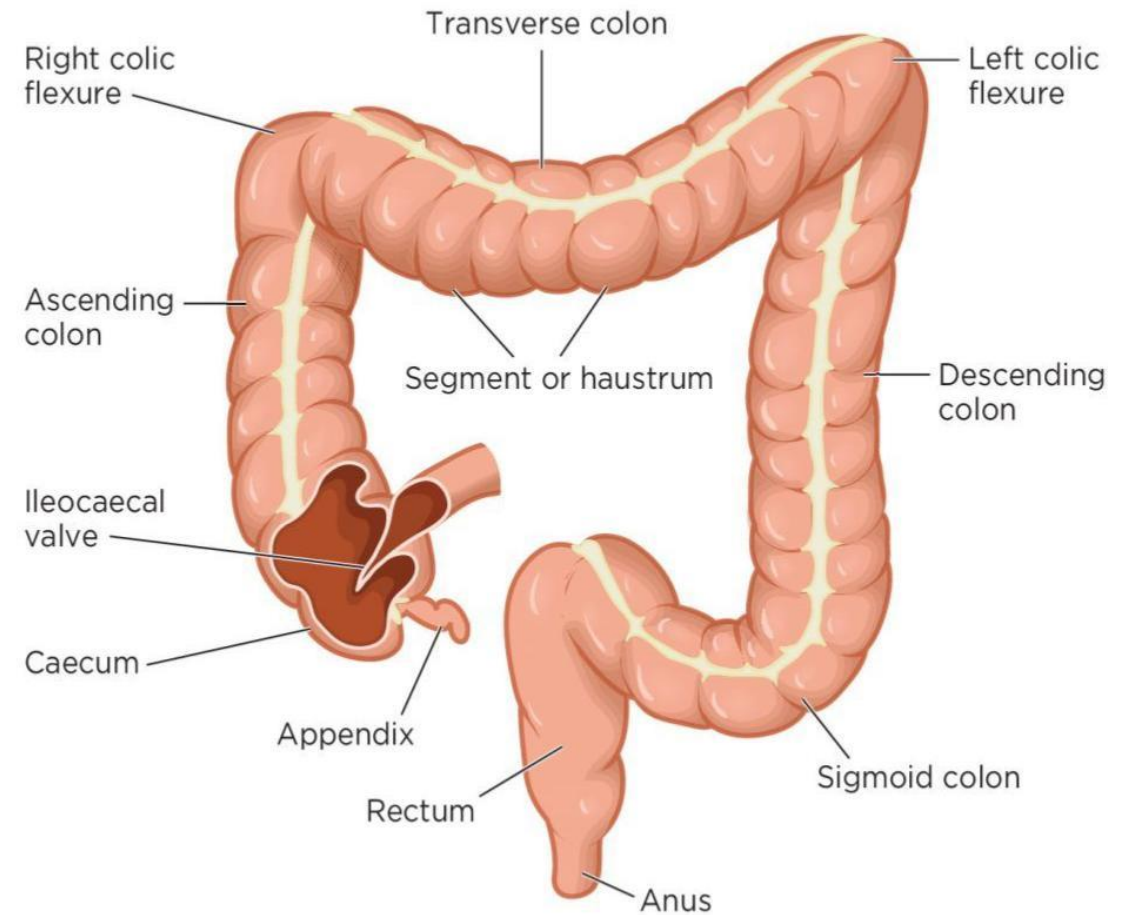
Large gut

NAME: AMNA KHAN

ROLL NO: 79

Parts

- ▶ Caecum
- ▶ Colon
 - Ascending Colon
 - Transverse Colon
 - Descending Colon
 - Sigmoid Colon
- ▶ Rectum
- ▶ Anal canal
- ▶ Anus



Descending & Sigmoid Colon

▶ **Descending colon**

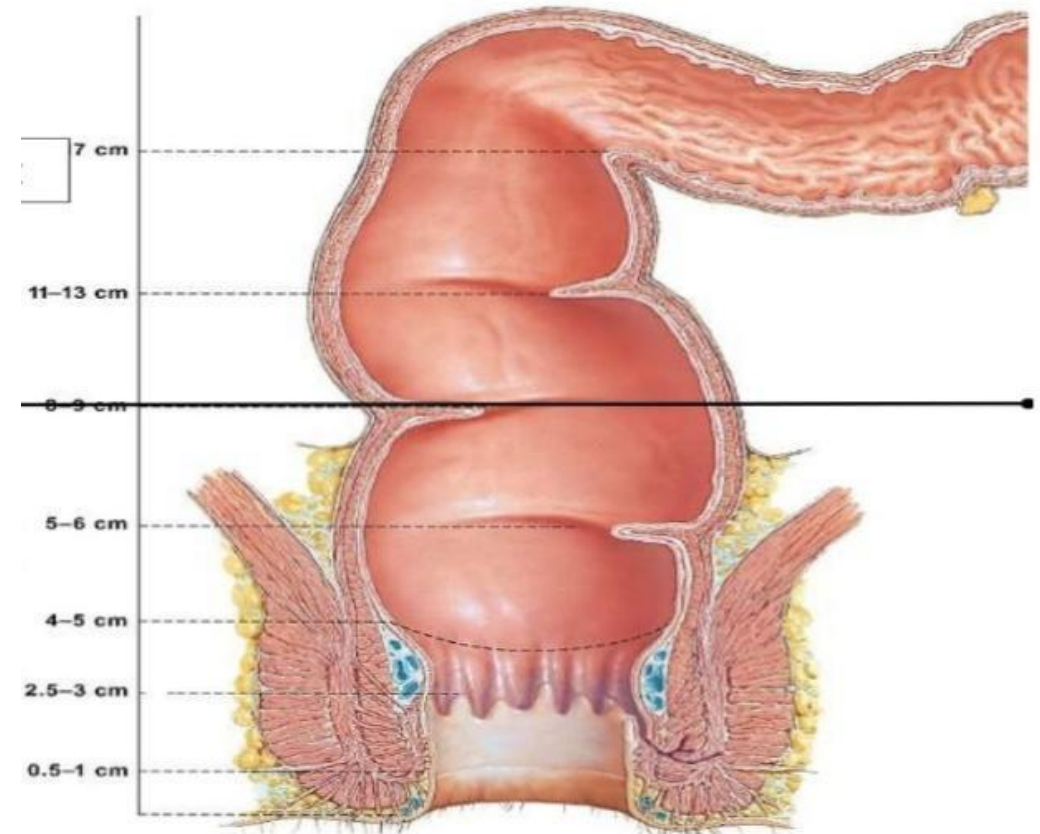
- 22 to 30 cm long.
- Begins at the left colic flexure and ends by becoming continuous with Sigmoid Colon.

▶ **Sigmoid colon**

- 25 to 40 cm long.
- Begins where the descending colon passes the pelvic brim. Below it becomes continuous with the rectum at the level of S3.

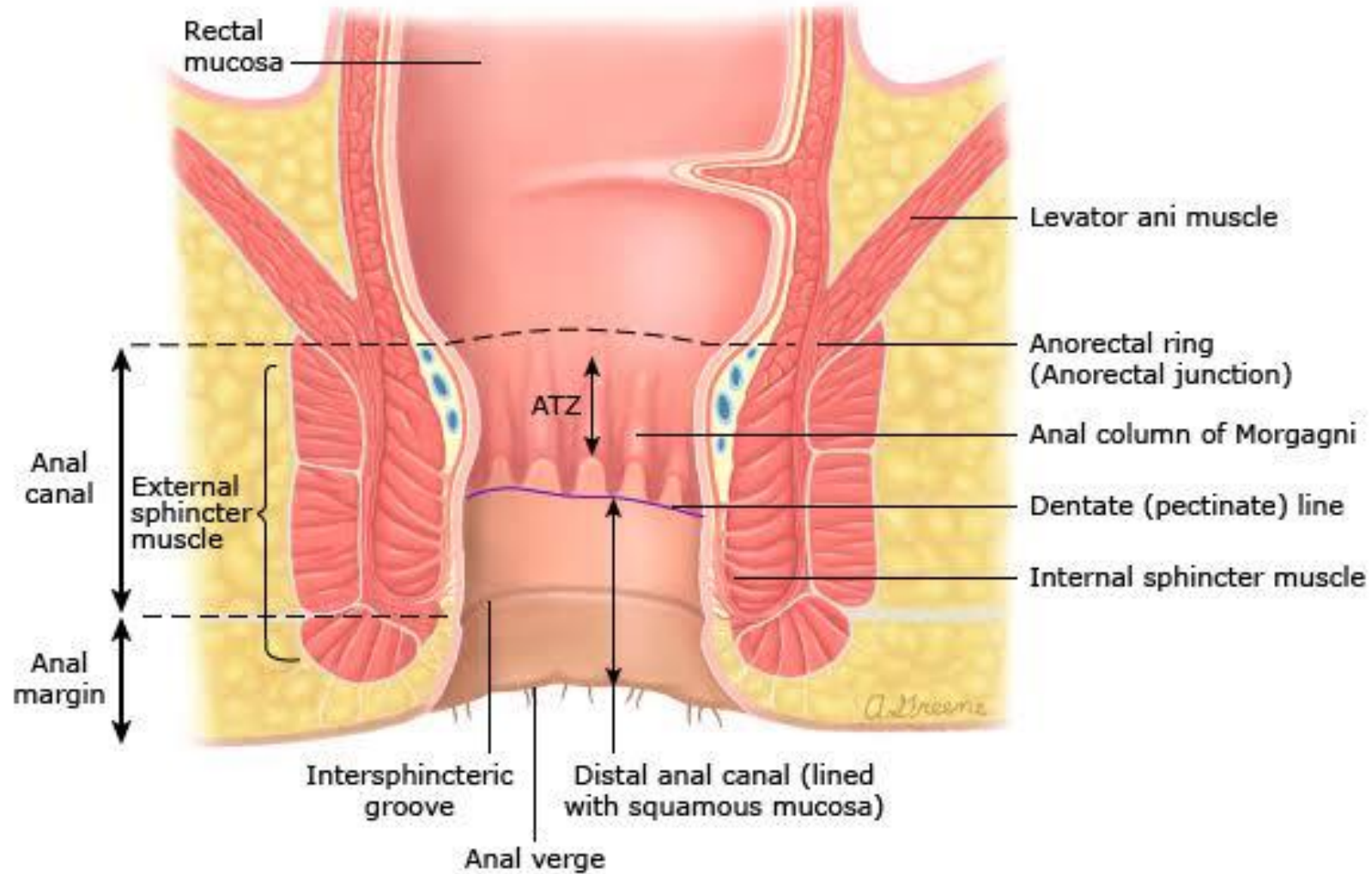
Rectum

- ▶ 18 – 20 cm long
- ▶ It is located to the front of sacrum and passes through the pelvic diaphragm that separates the rectum into the pelvic and anal part.
- ▶ It has characteristic folds or valves called Houston Valves.
- ▶ The middle rectal fold is the strongest valve which is present at the right lateral side of the rectum at 7 cm from anus.
- ▶ Devoid of taenia coli and sacculations.



Anal Canal

- ▶ It begins as a continuation of rectum and then passes inferioposteriorly to terminate at the anus.
- ▶ Pectinate line (Dendate line) divides the anal canal into upper two third and lower one third parts.
- ▶ There are two sphincters surrounding the anal canal namely
 - Internal anal sphincter
 - External anal sphincter



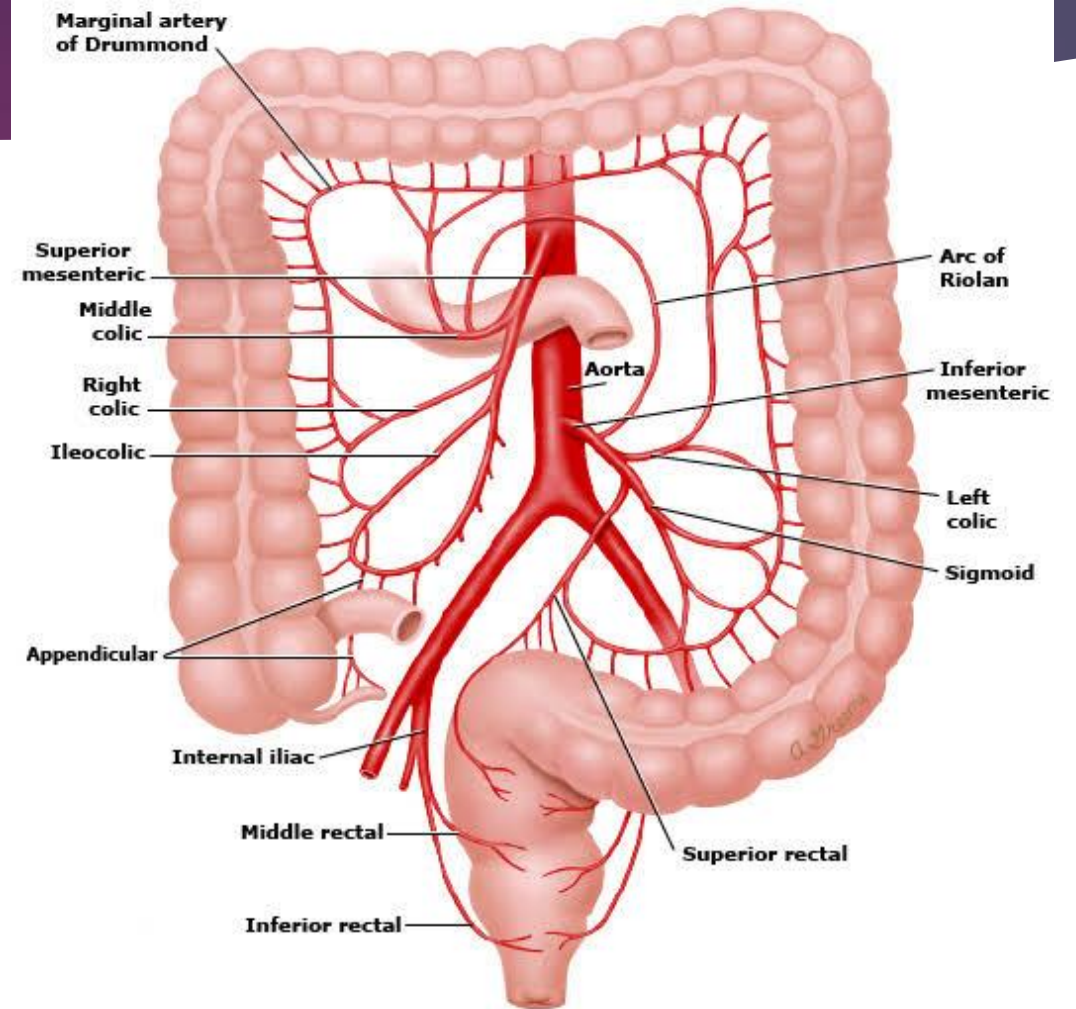
Blood supply of Descending & Sigmoid colon

▶ Arterial Supply:

Left colic and **Sigmoid** branches of **Inferior Mesenteric Artery**.

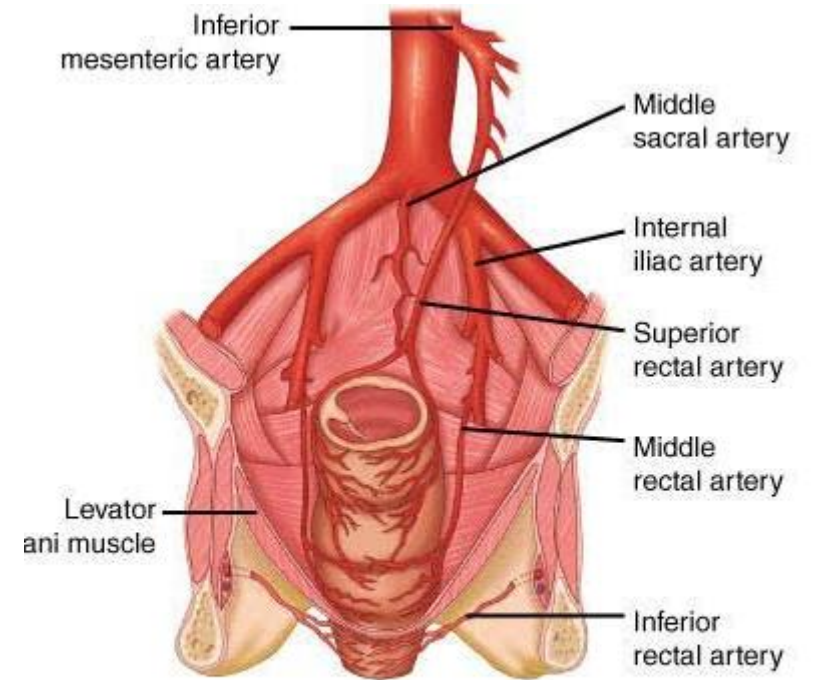
▶ Venous Drainage:

Left colic and **Sigmoid** veins that drain into **Inferior Mesenteric Vein**.



Blood supply of Rectum

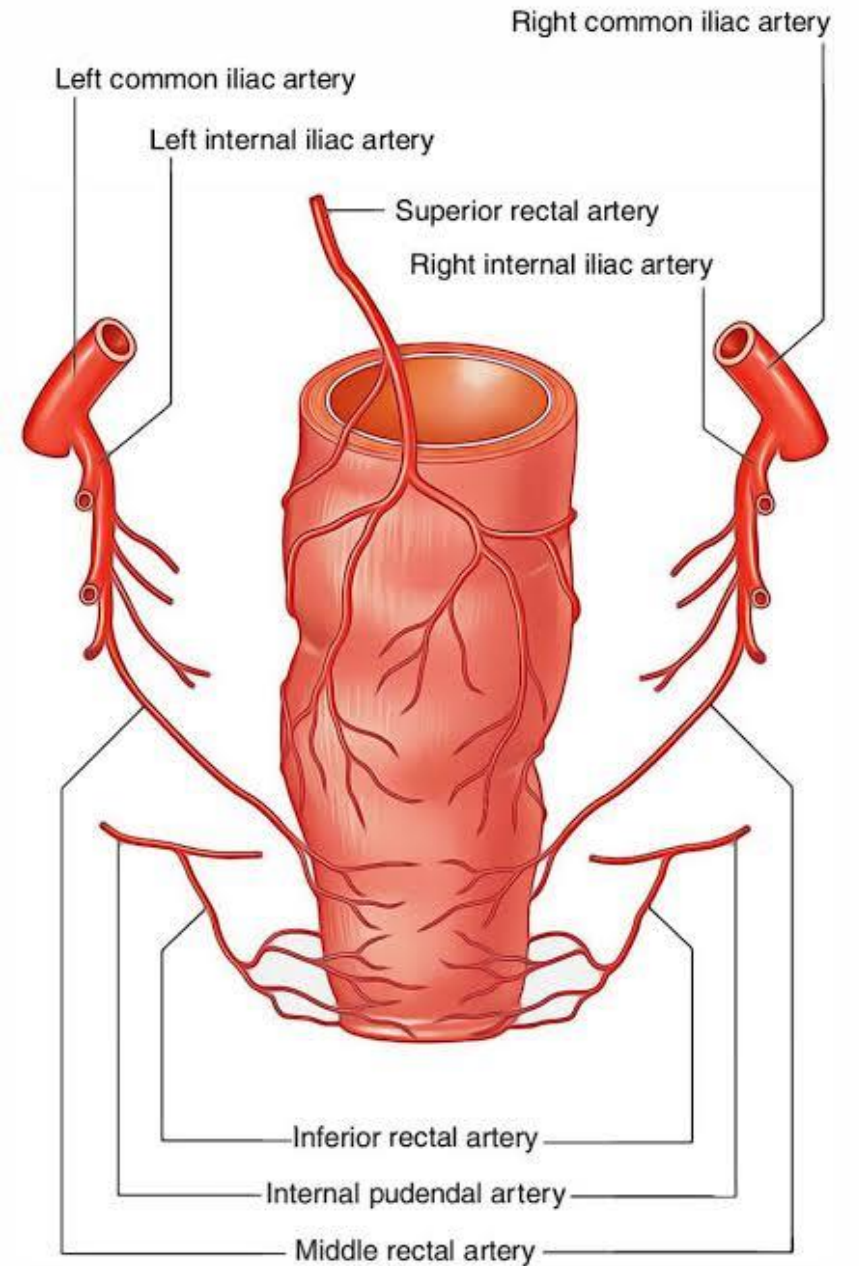
- ▶ **Superior Rectal Artery** (branch of IMA)
- ▶ **Middle Rectal Artery** (branch of Internal iliac artery)
- ▶ **Inferior Rectal Artery** (branch of Internal pudendal artery from Internal iliac artery)



Arterial supply to the rectum and anal canal.

Blood supply of Anal Canal

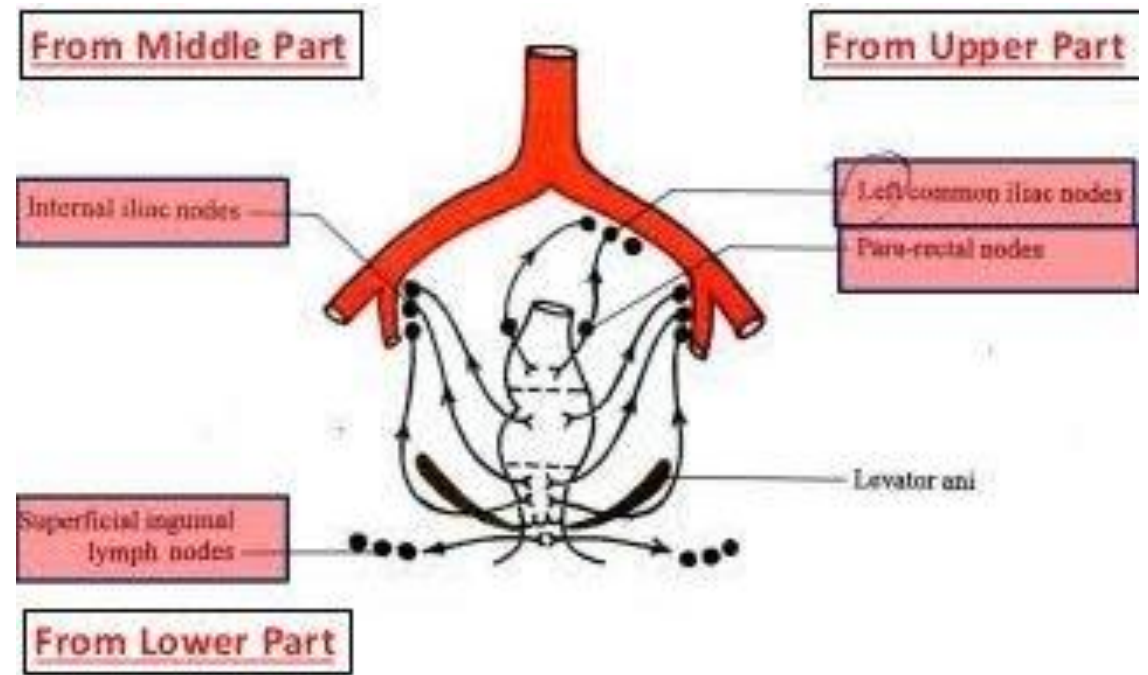
- ▶ Middle rectal artery.
- ▶ Inferior rectal artery.



Lymph drainage

► Lymph drainage:

- **Inferior Mesenteric Nodes** above the pectinate line.
- **Superficial Inguinal Nodes** below the pectinate line.



Nerve Supply

- ▶ Parasympathetic supply

Pelvic splanchnic nerves

- ▶ Sympathetic supply

Lumbar splanchnic