

Lower Limb Radiographs

Dr Ehsan Ullah
Clinical Skills Lab
KGMC , Peshawar

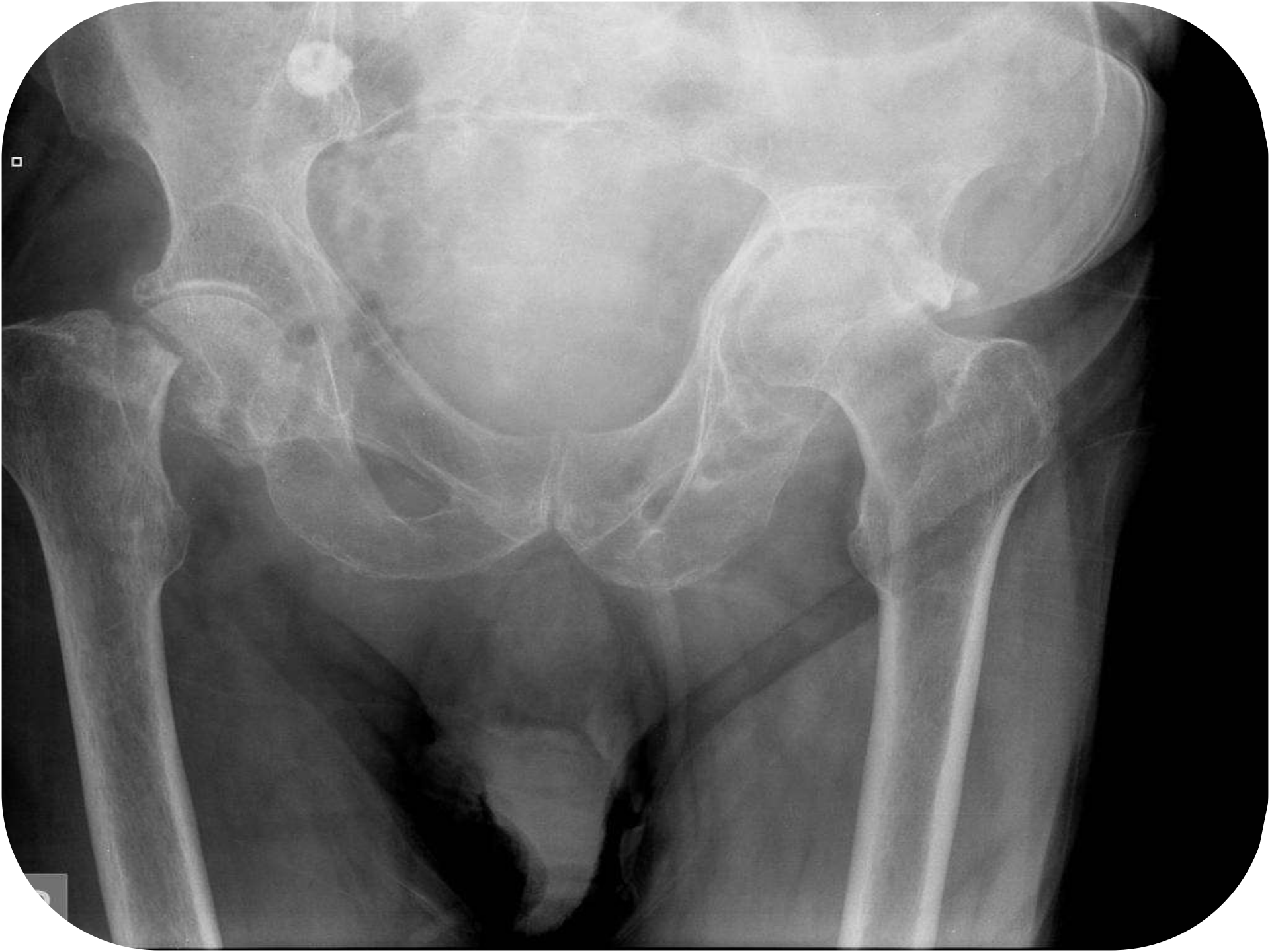
Small Group Activity 1

- Have a look at the given radiograph and write down the **name of the bones** you see
- If you observe any **abnormal finding** , then mention the name of the bone in which you have seen that
- Time for the task : 10 min







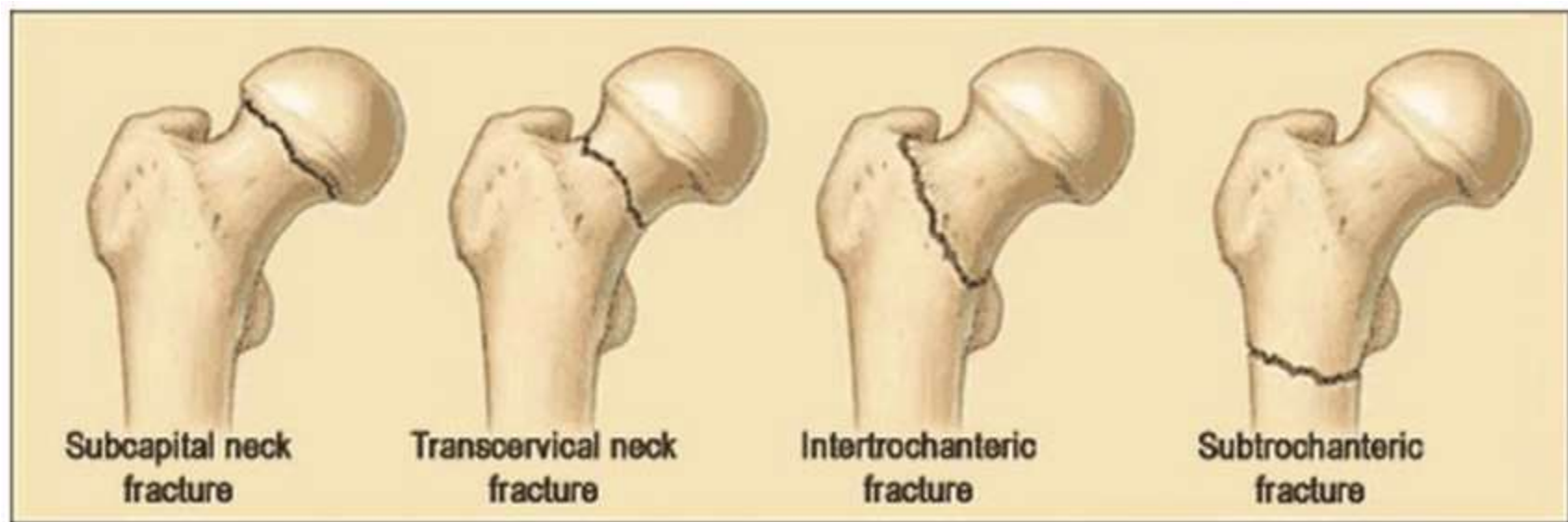






© R. Thurman RJ: *The Atlas*
EmergencyMedicine.com
All rights reserved.

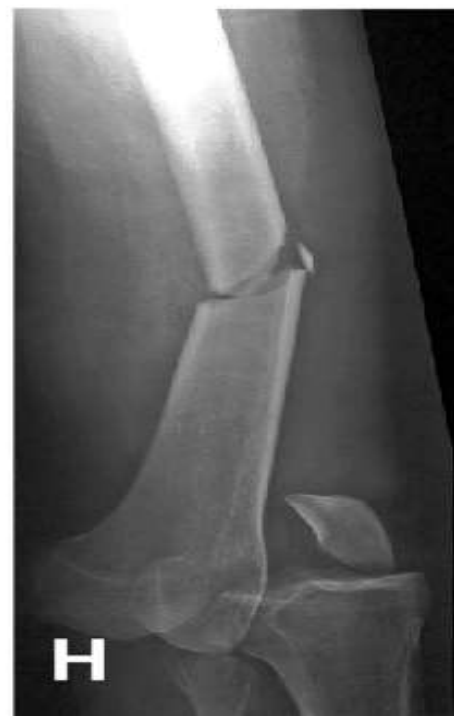
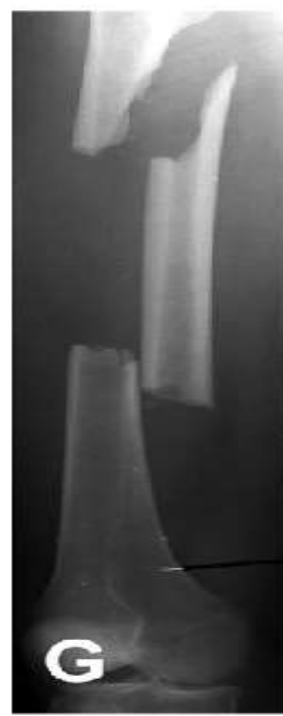
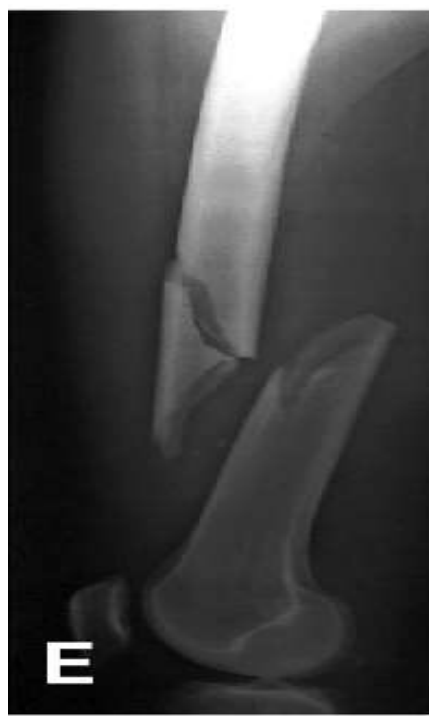




Small group activity 2

- Write down the fracture pattern with each Labeled bone

A	
B	
C	
D	
E	
F	
G	
H	



L

Zoom 0.5

W:2397
C:2150



