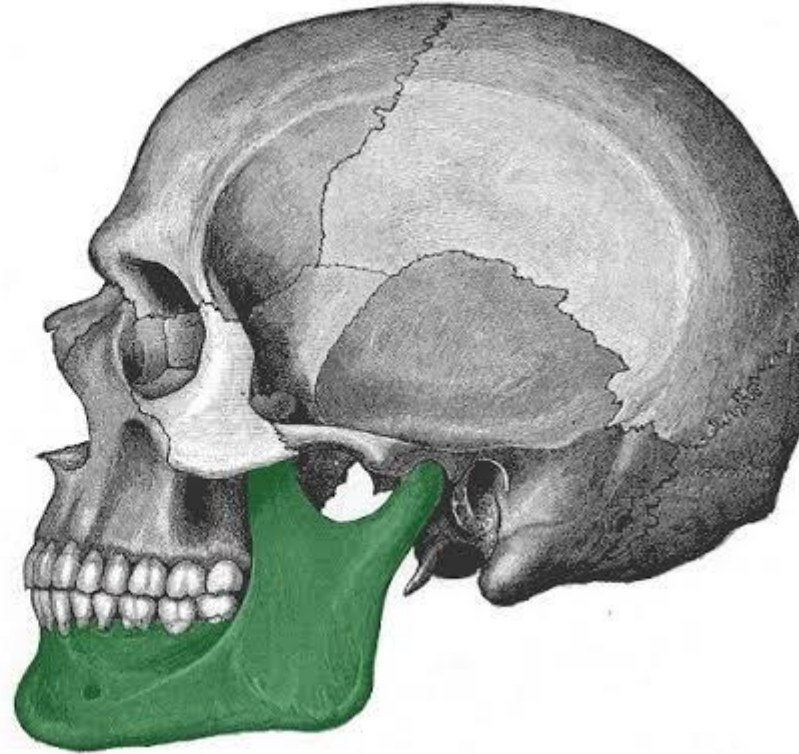
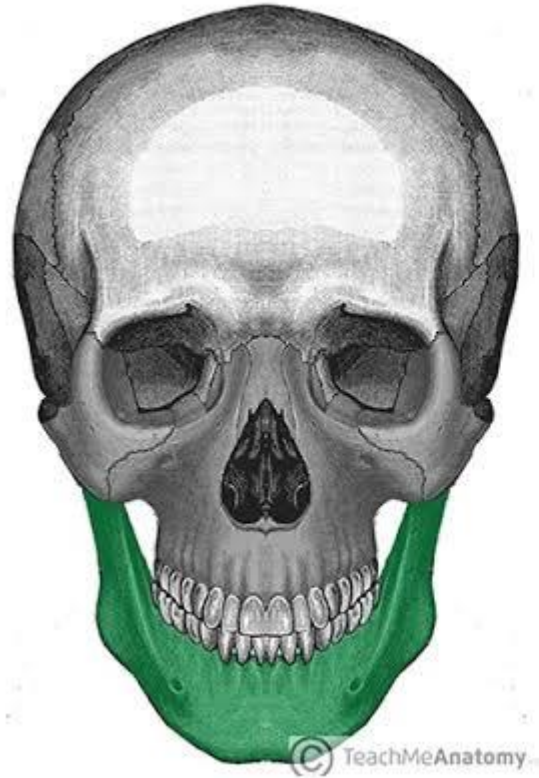


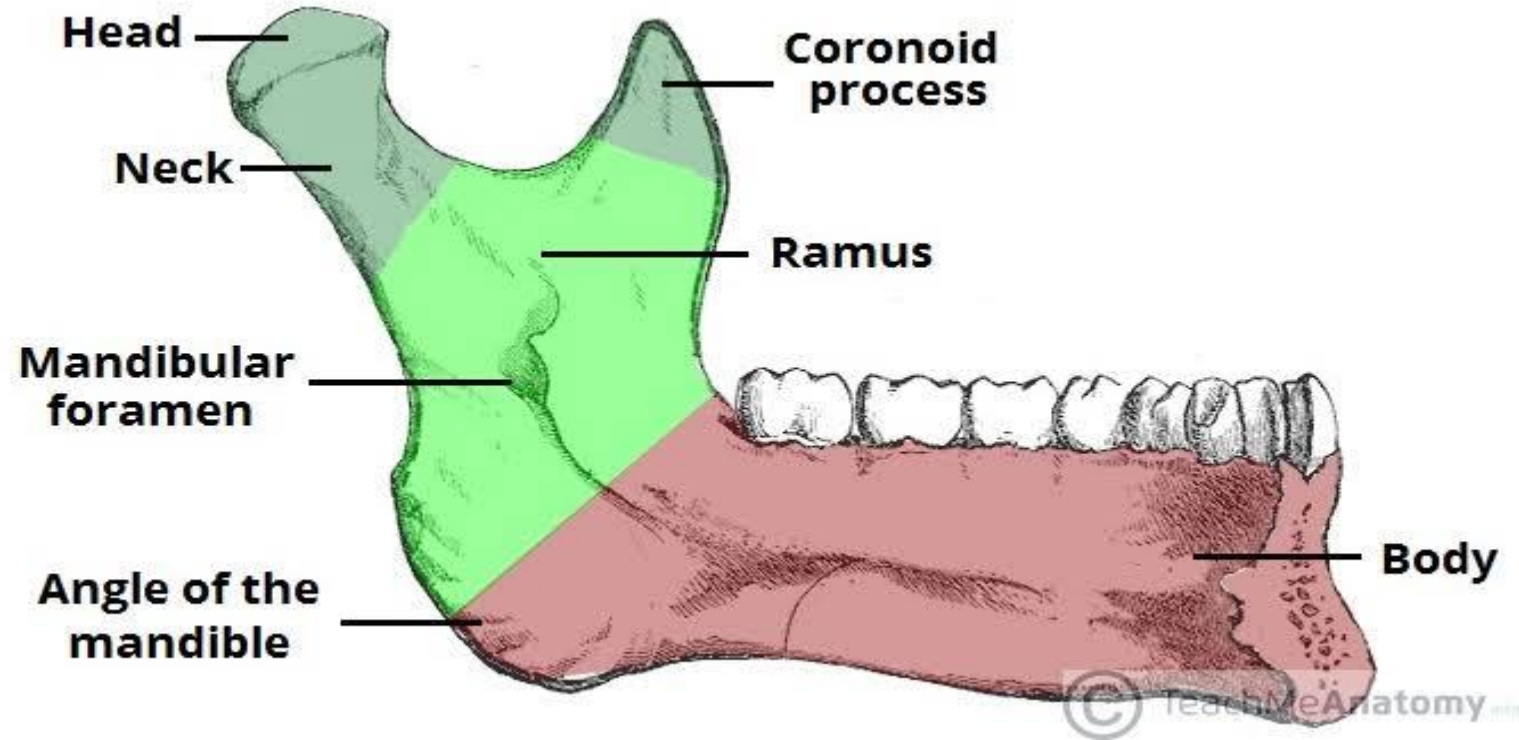
Osteology of Mandible

By Hayah Gul

- **Single , unpaired and only movable bone of skull**
- **Largest and strongest bone of face**
- **Forms lower jaw**
- **Articulates with temporal bone on either side forming temporomandibular joint**



- **Body**
- **Angle**
- **Two rami**



Body

- Horse shoe shaped
- Two borders
 - upper border(alveolar border)
 - lower border(base)
- Two surfaces
 - external surface
 - internal surface

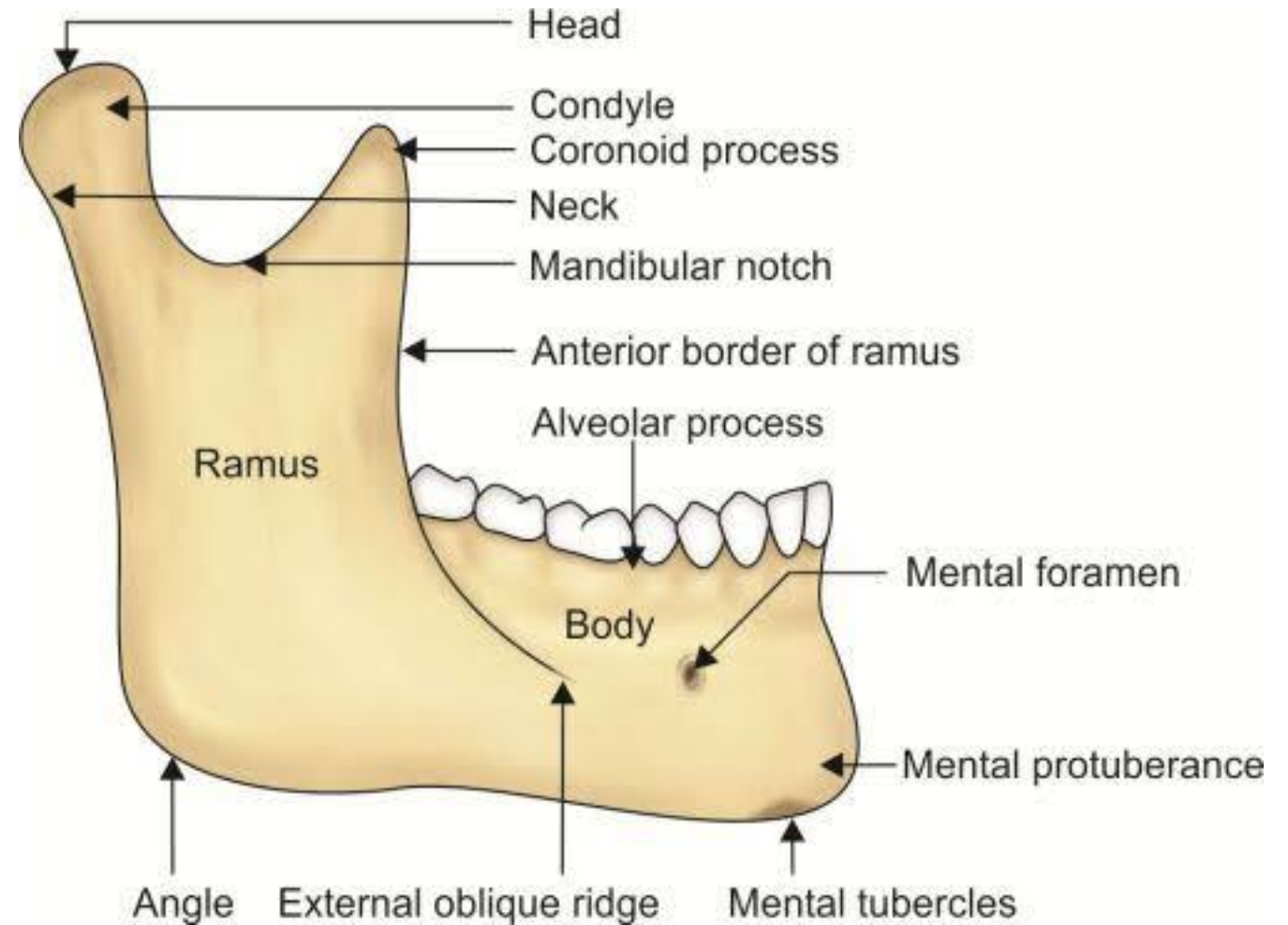


ANATOMY STANDARD



Ramus

- **Two surfaces**
 - external surface
 - internal surface
- **Four borders**
 - superior border
 - lower border
 - anterior border
 - posterior border
- **Condylar process**
- **Coronoid process**
- **Mandibular notch (masseteric nerve and vessels)**
- **Pterygoid fovea**

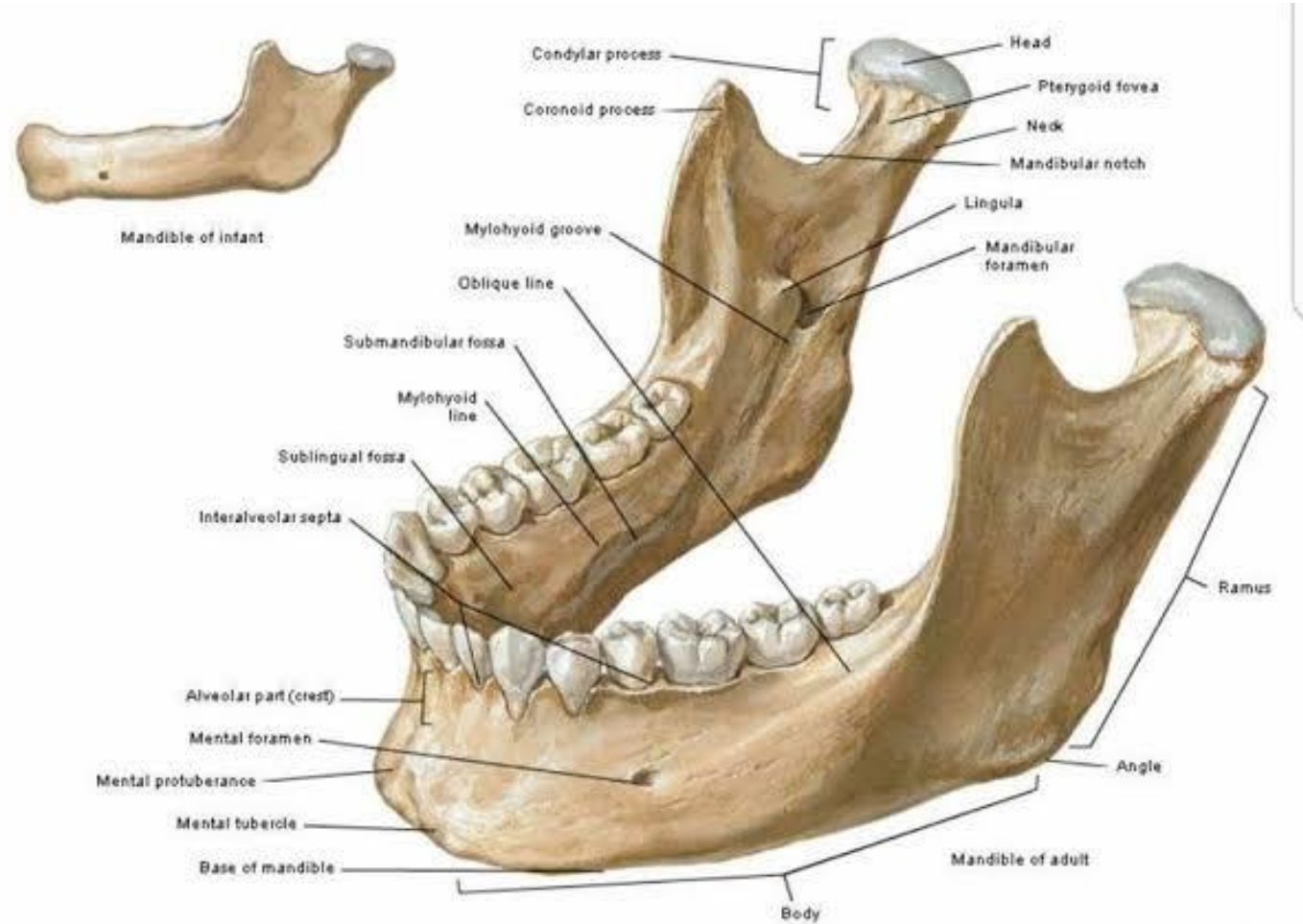


- Pterygoid fovea is a small depression on the anteriomedial surface of Condylar process marking the attachment of inferior belly of lateral pterygoid muscle

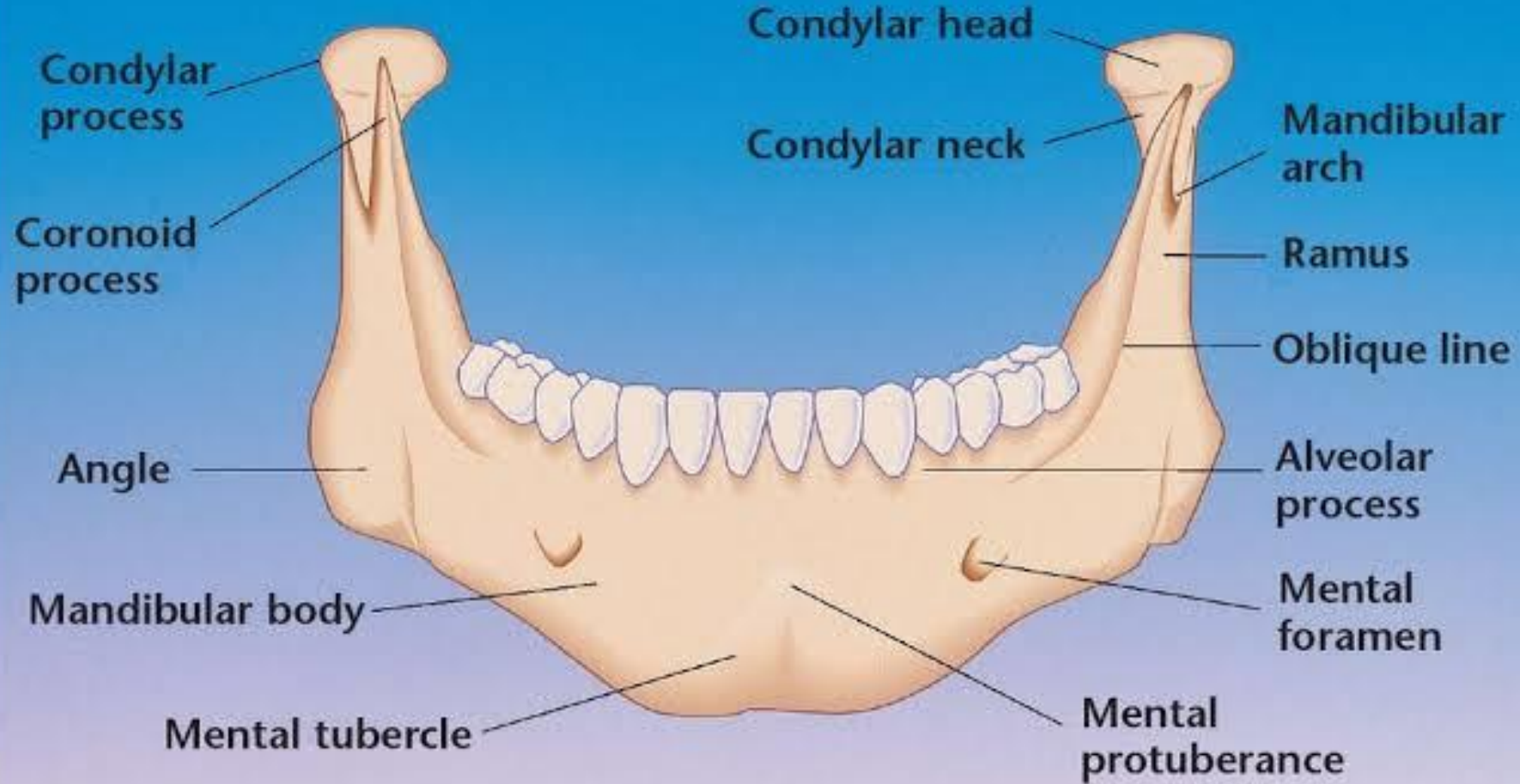


Features on external surface of Mandible

- Symphysis menti
- Mental protuberance
- Mental tubercle
- Mental foramen (mental nerve and vessels)
- Oblique line
- Incisive fossa

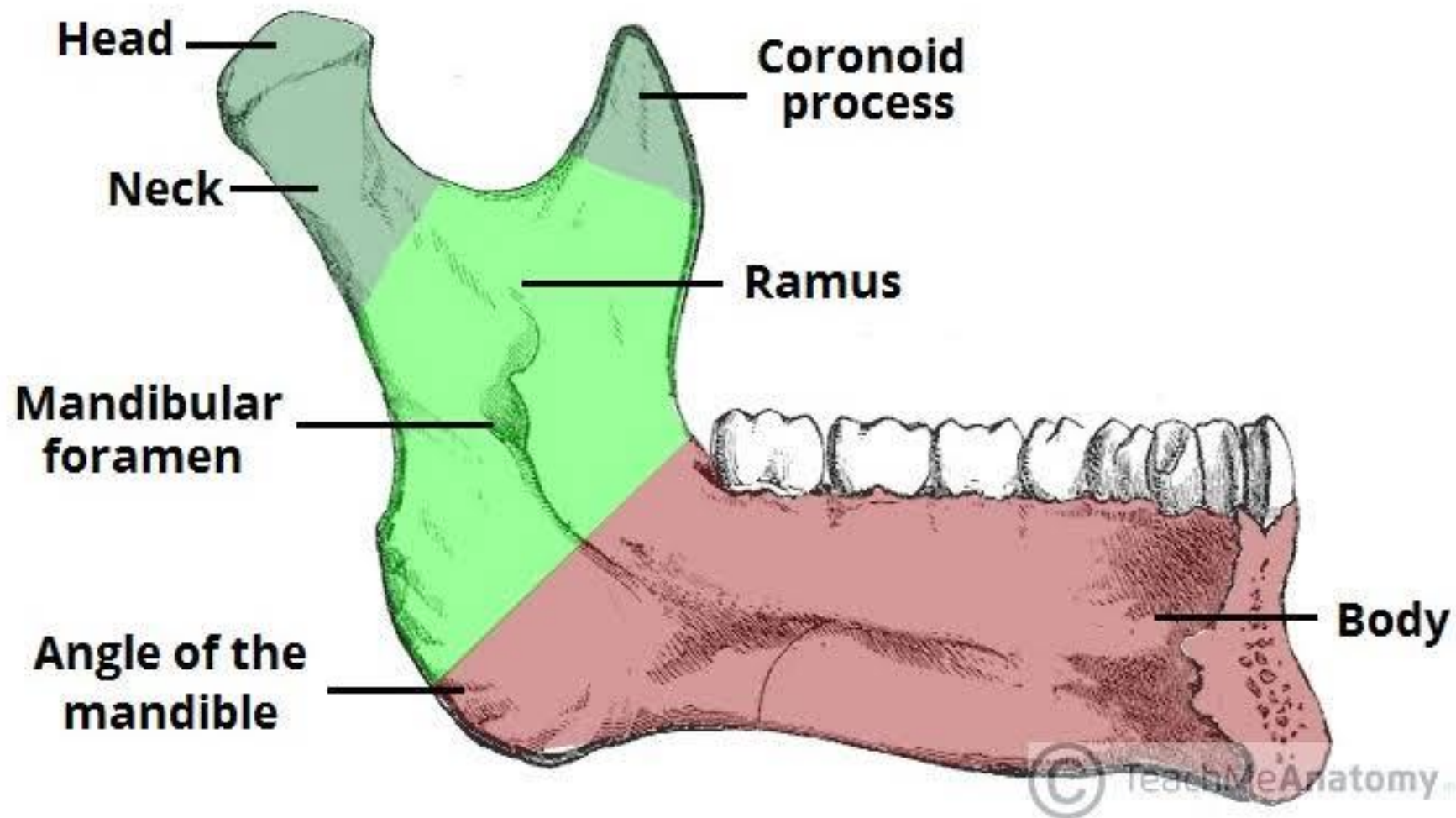


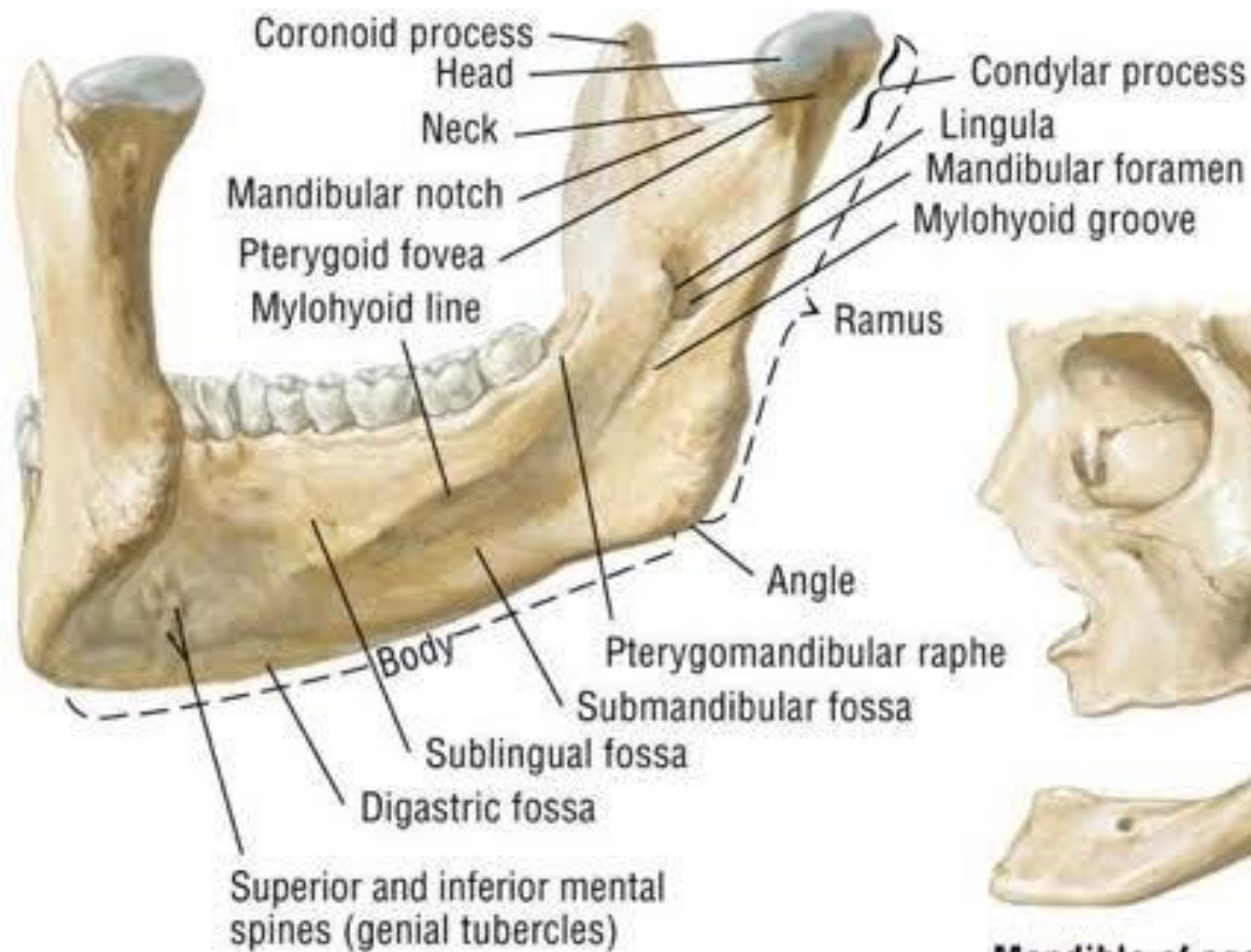
Mandible (anterior aspect)



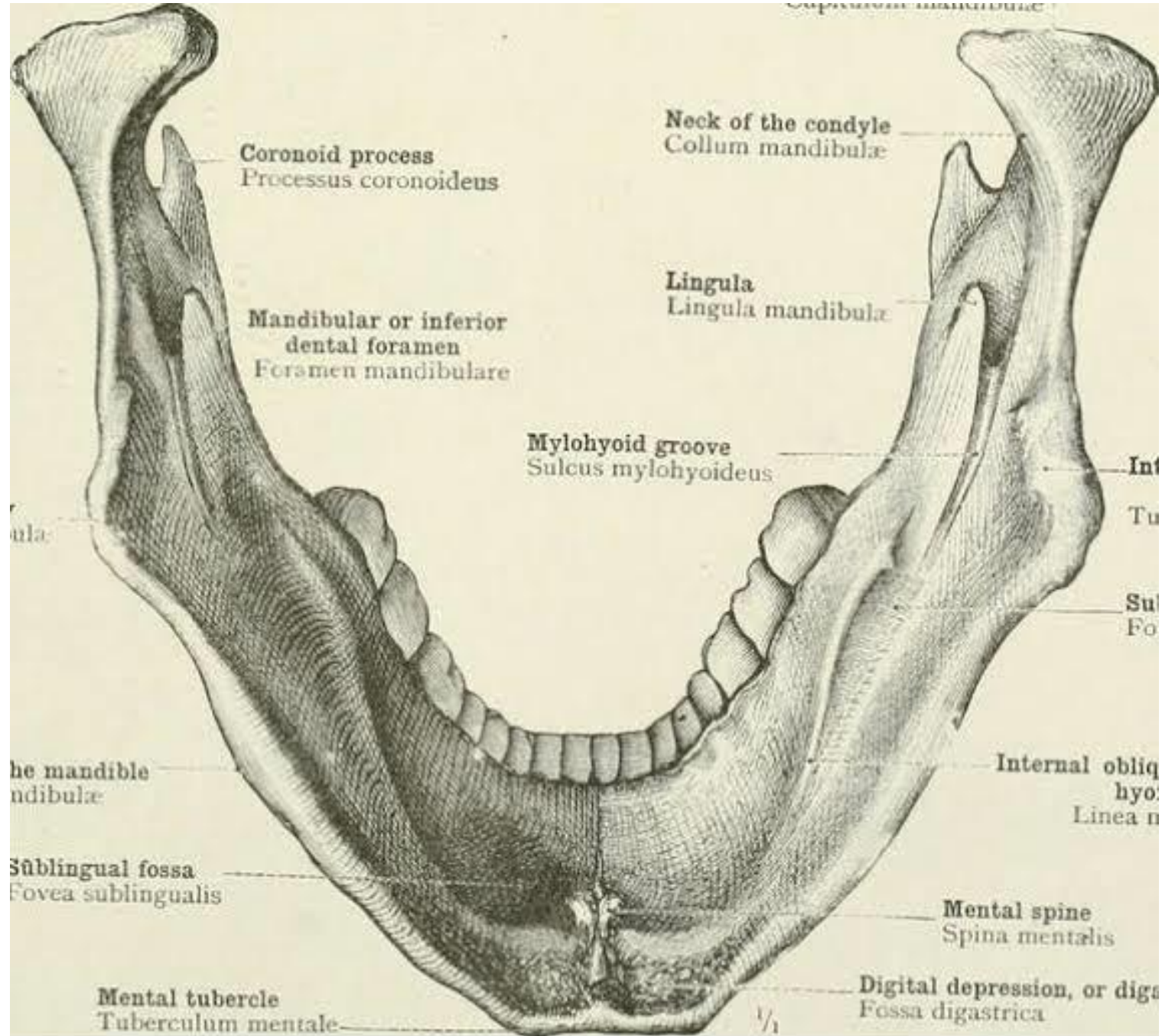
Features on the internal surface of Mandible

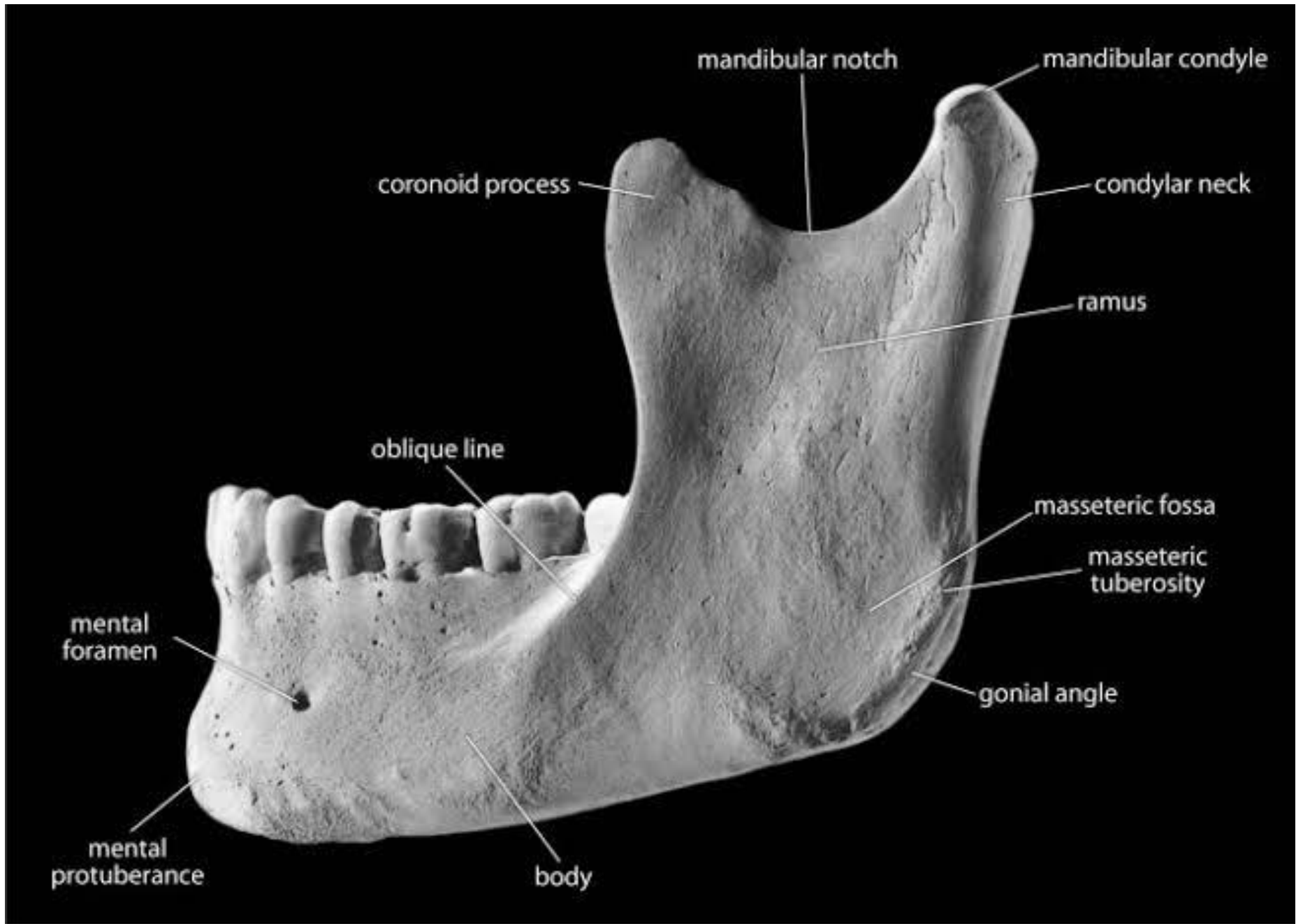
- **Superior and inferior mental spines**
- **Digastric fossa**
- **Mylohyoid line**
- **Sublingual fossa**
- **Submandibular fossa**
- **Mylohyoid groove(Mylohyoid nerve and vessels)**
- **Mandibular foramen(inferior alveolar nerve and vessels)**
- **Mandibular canal(connect mandibular and mental foramen)**
- **Lingula**





Mandible of aged person (edentulous)





THANK

YOU

