

ANATOMY SGD PRESENTATION

BY; **MANSHA IMRAN**

2ND YEAR MBBS

CONTENTS;

1. Meninges
2. Dural folds
3. Dural
sinuses

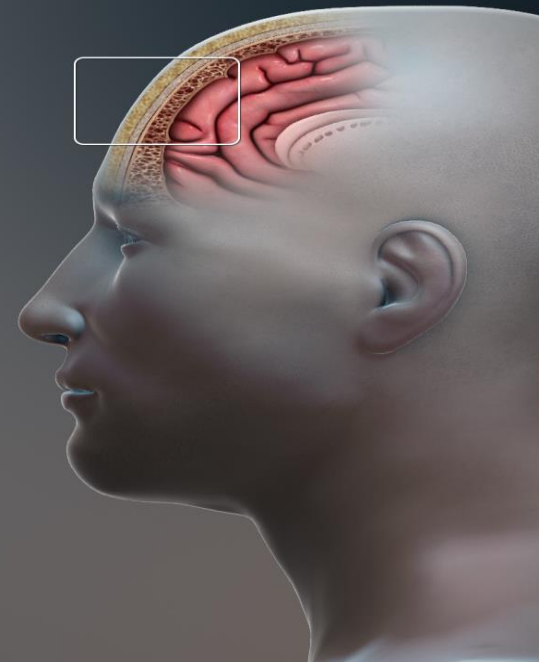
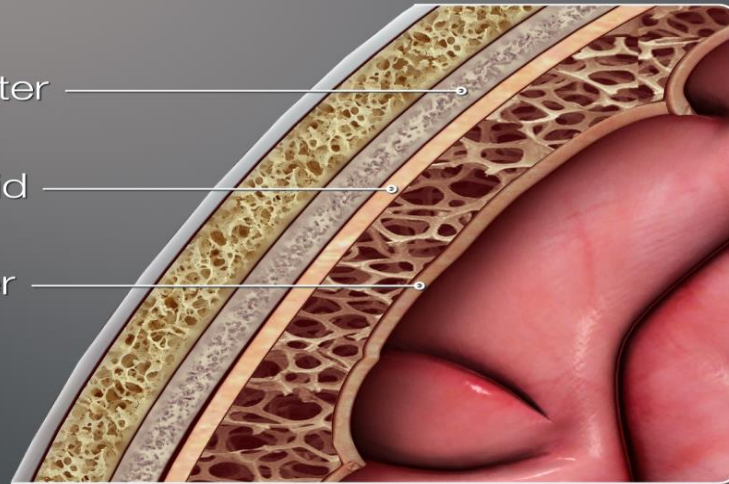
MENINGES...

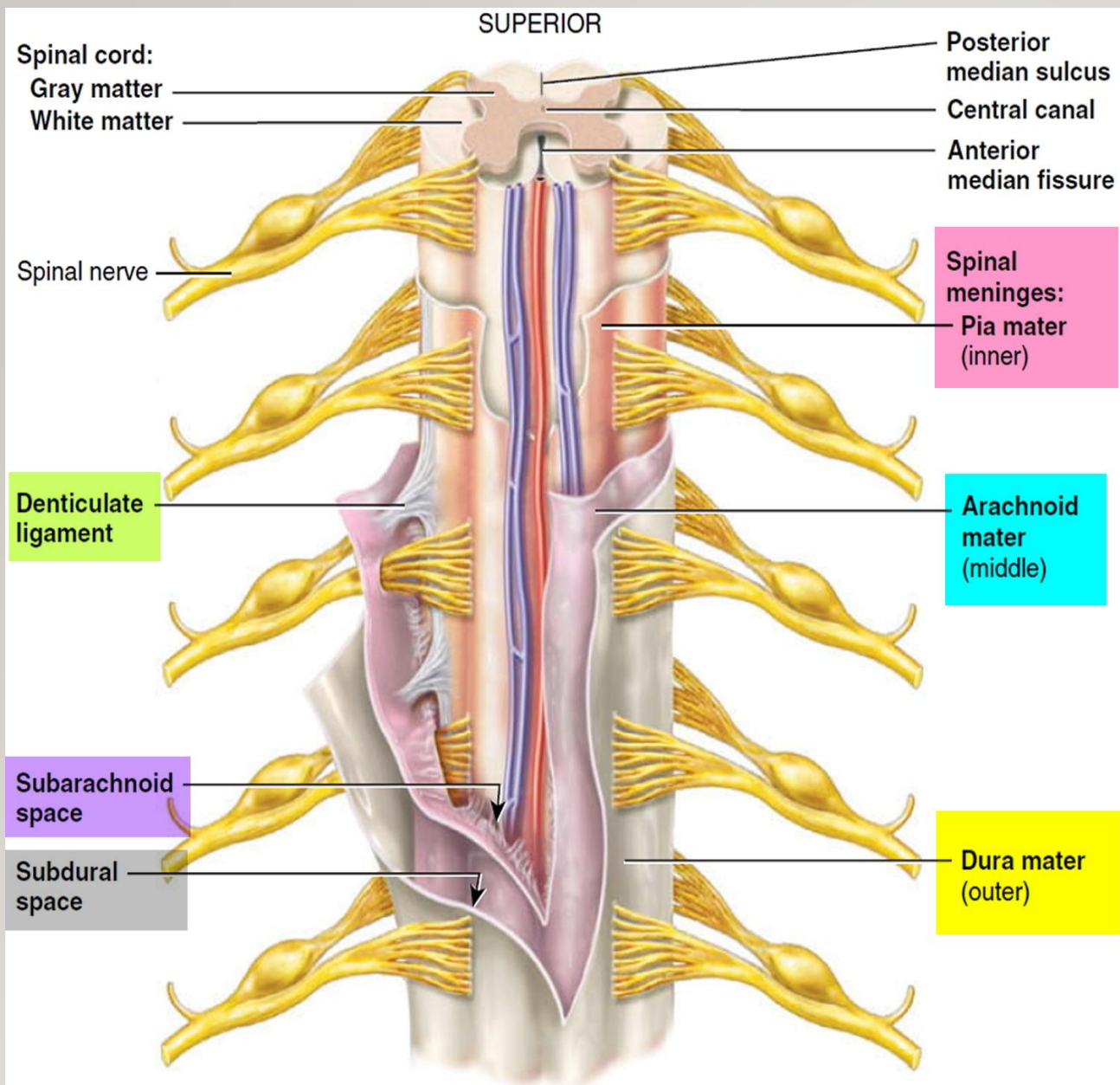
Meninges

Dura Mater

Arachnoid

Pia Mater

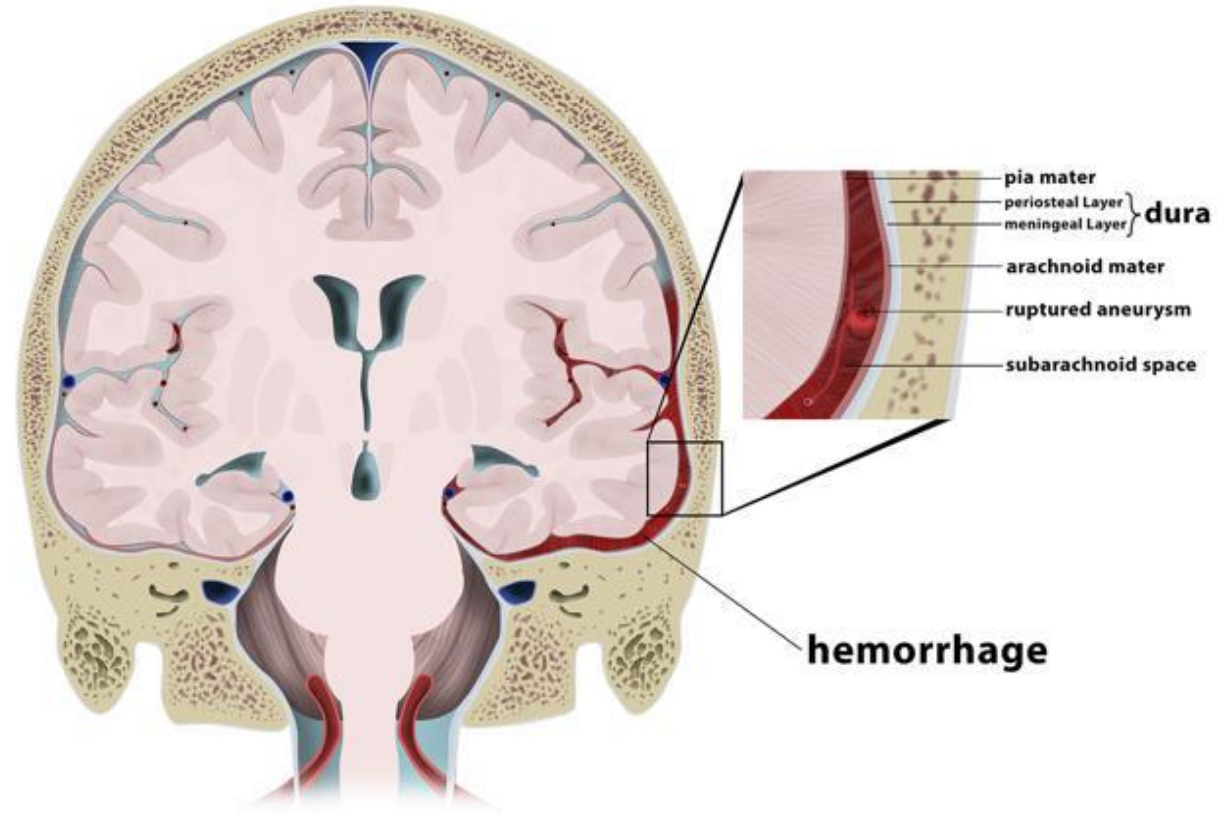




Meningeal layer of Dura continues in spinal cord only

Pia mater continues below L1 till S3

Subarachnoid Hemorrhage



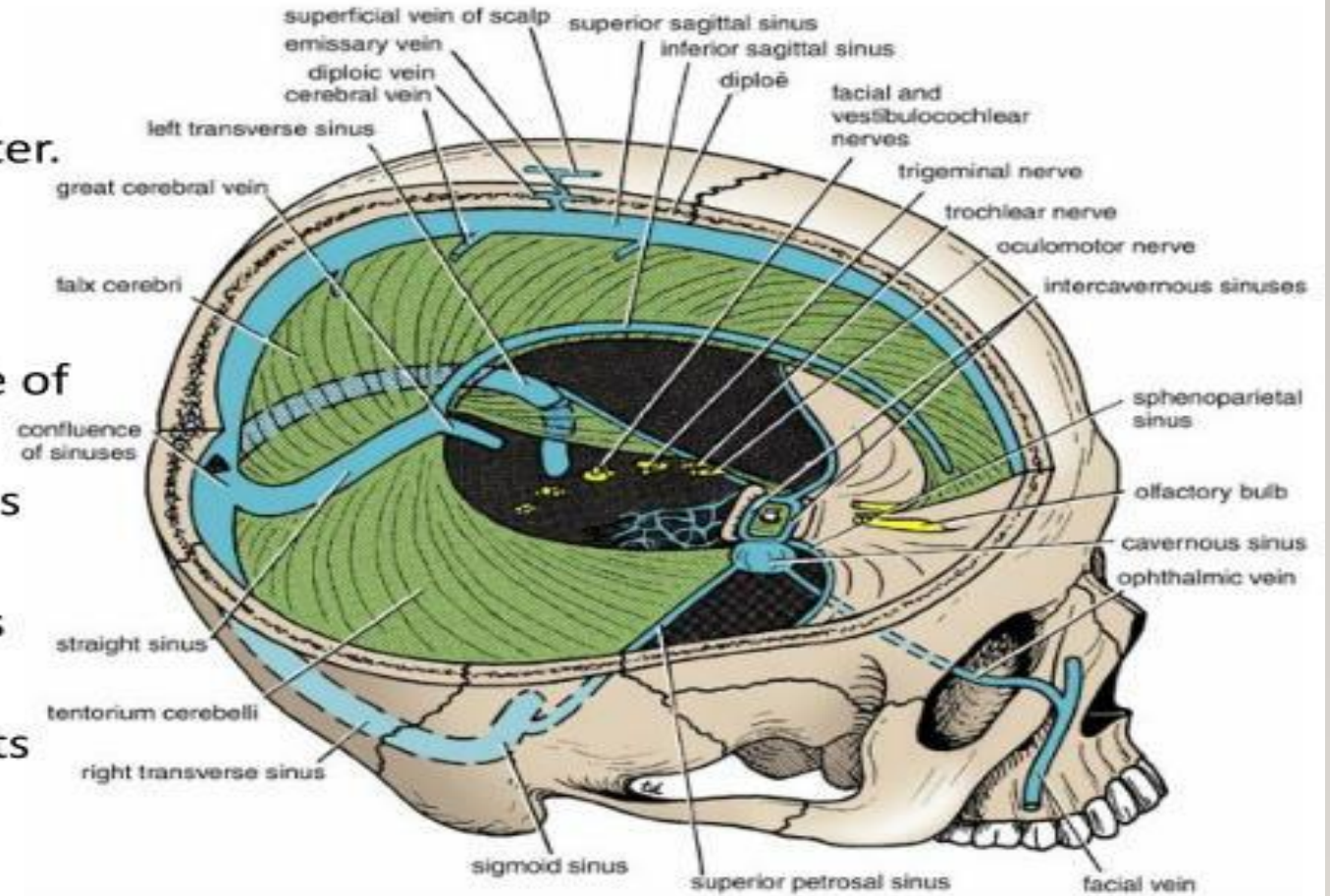
DURAL FOLDS:

- Falx cerebri
- Falx cerebelli
- Tentorium cerebelli
- Diaphragma sellae

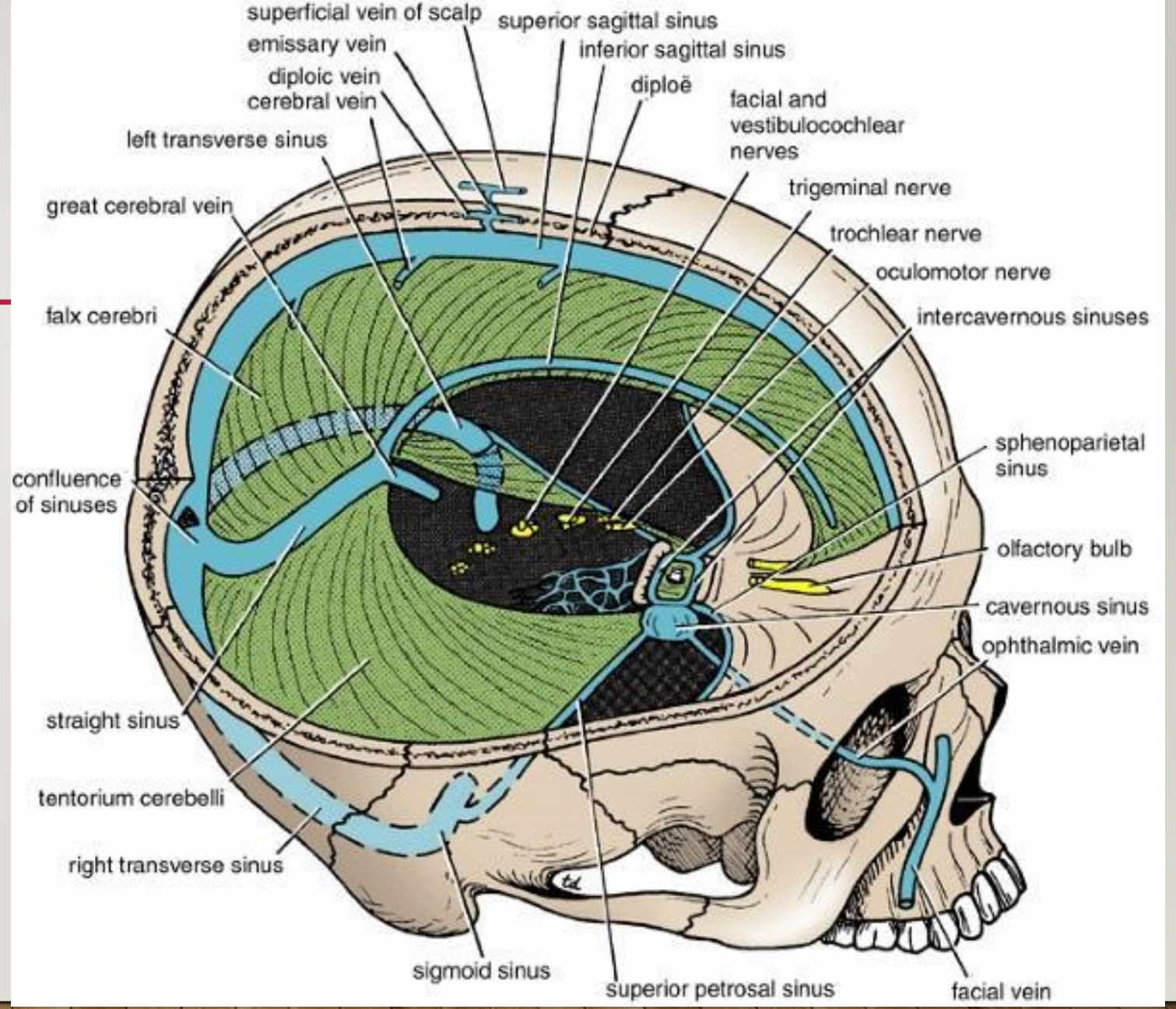
Dura Partitions – Falx Cerebri

Falx Cerebri:

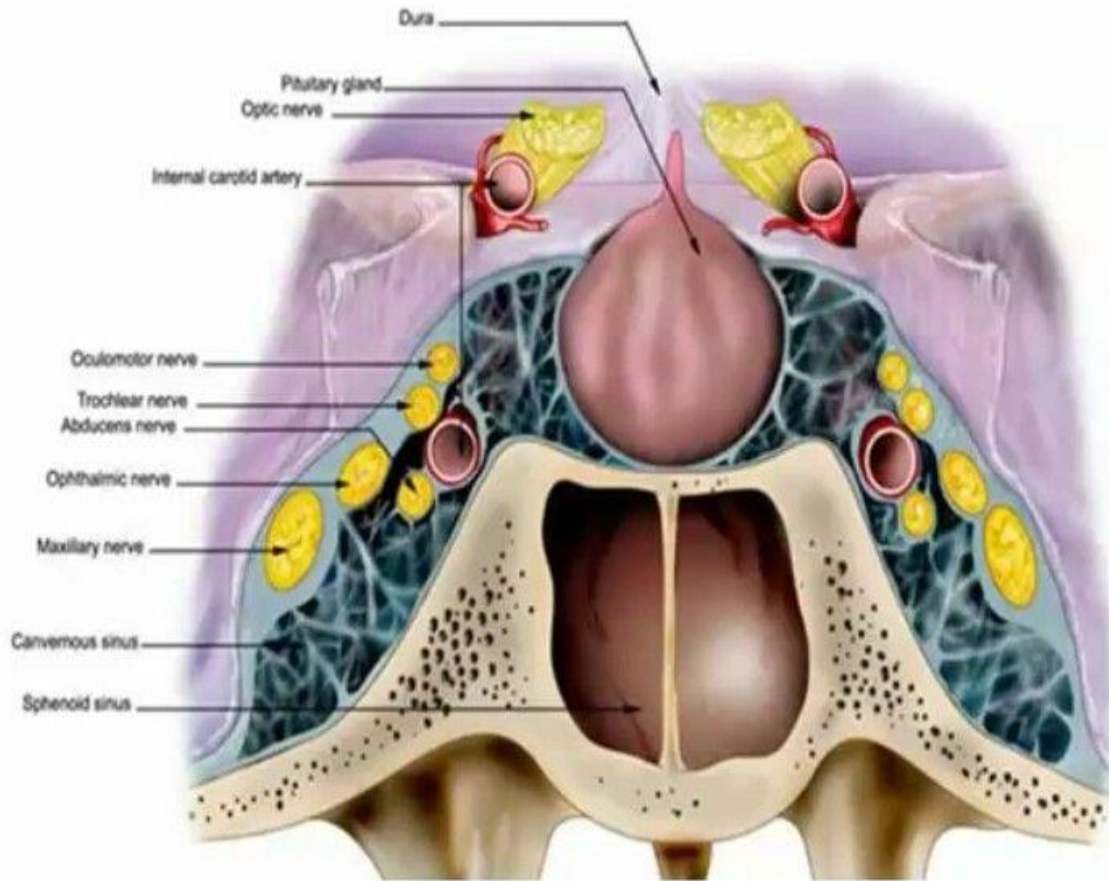
- Sickle-shaped fold of dura mater.
- Its ant end is attached to the internal frontal crest and the crista galli. Its posterior end blends with the upper surface of the tentorium cerebelli.
- The superior sagittal sinus runs in its upper fixed margin
- The inferior sagittal sinus in its lower free margin
- The straight sinus runs along its attachment to the tentorium cerebelli.



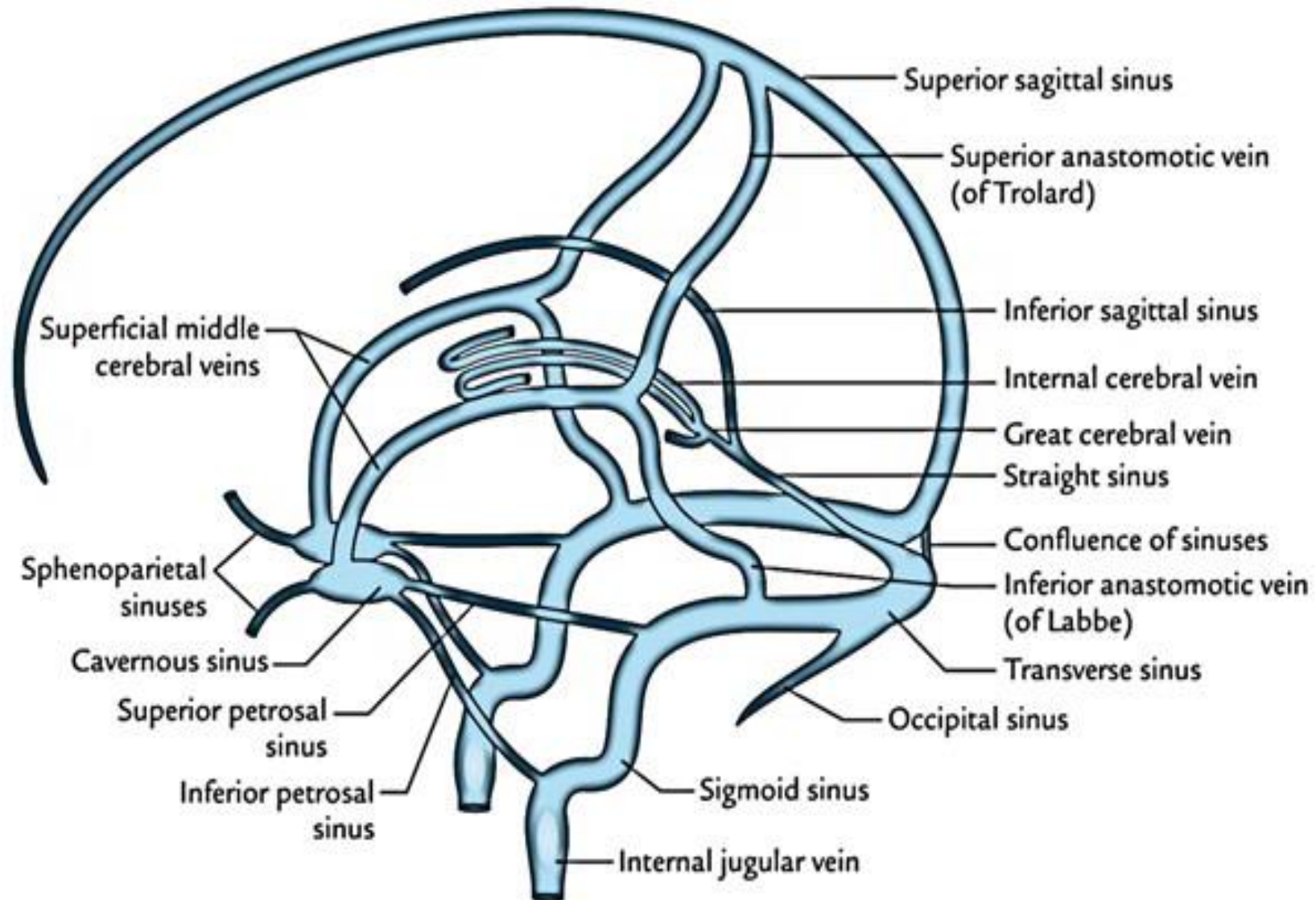
DURAL SINUSES:

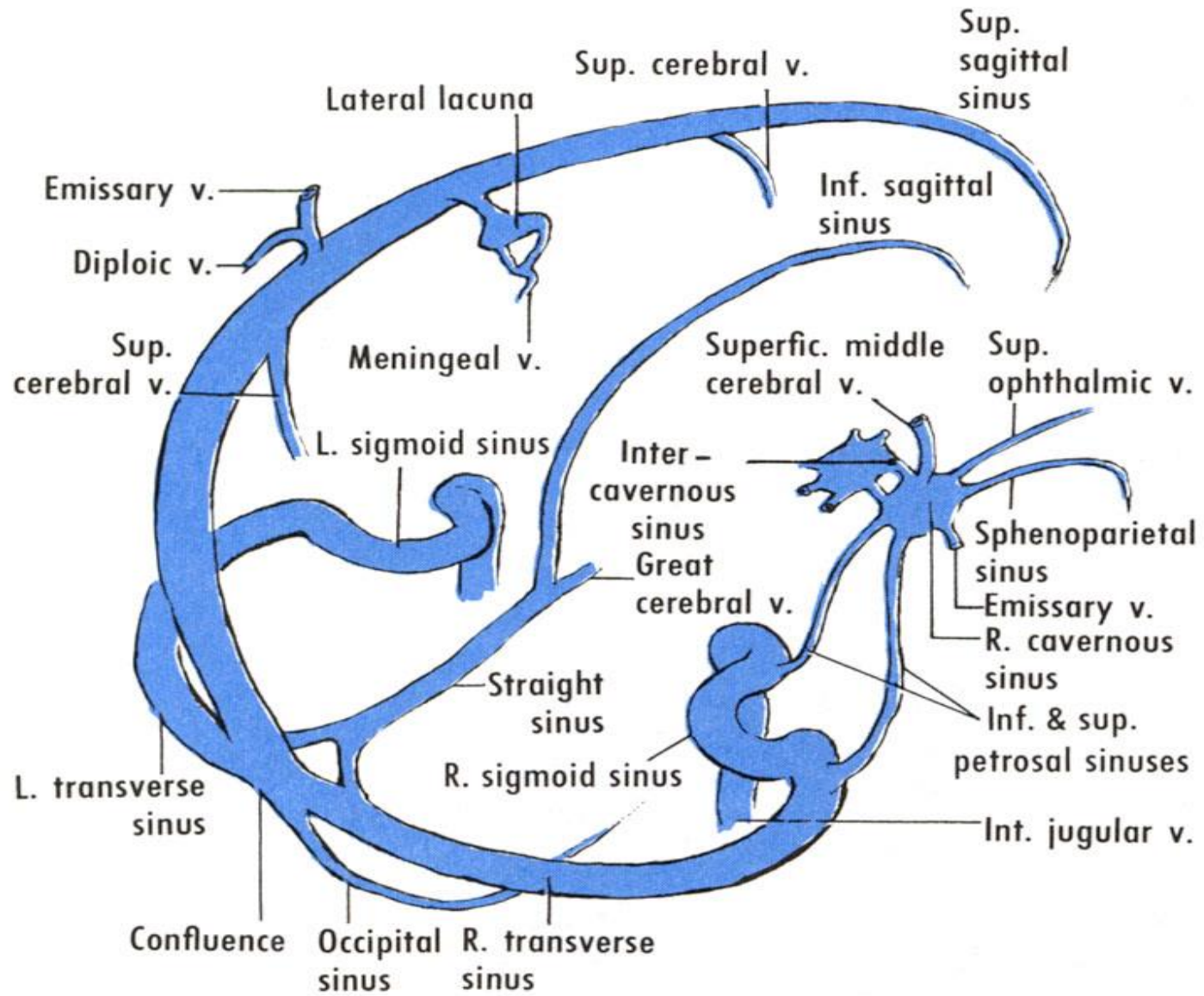


Cavernous sinus anatomy







- Internal carotid artery
- Oculomotor nerve
- Trochlear nerve
- Ophthalmic nerve
- Maxillary nerve
- Abducent nerve





SUMMARY:

- Right branch from transverse sinus  superior sagittal sinus
- Left branch from transverse sinus  inferior sagittal sinus
- All 4 confluence  straight sinus  transeverse sinus
sigmoid sinus. Also inferior and superior petrosal sinus along with occipital sinus add here

A rectangular sign with a gold-colored frame is centered on a dark brown wood-paneled wall. The sign's background is a dark, gradient-filled rectangle. The text "Thank You!" is written in a white, elegant cursive script, with "Thank" on the top line and "You!" on the bottom line. The sign is set against a wall of vertical wood planks. At the bottom of the image, a section of light-colored wooden floor is visible.

*Thank
You!*