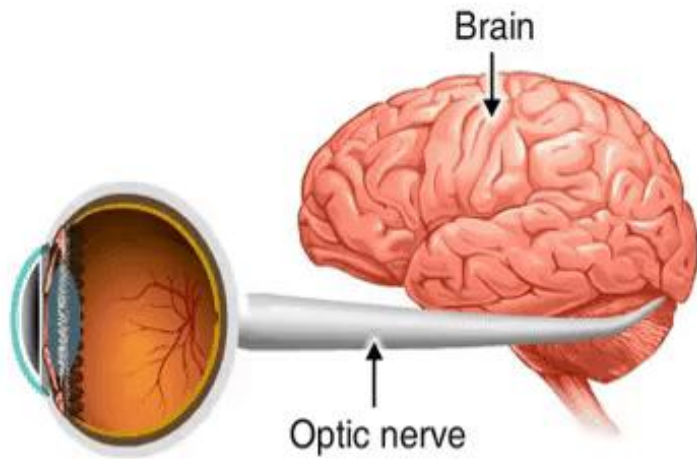


ADAM

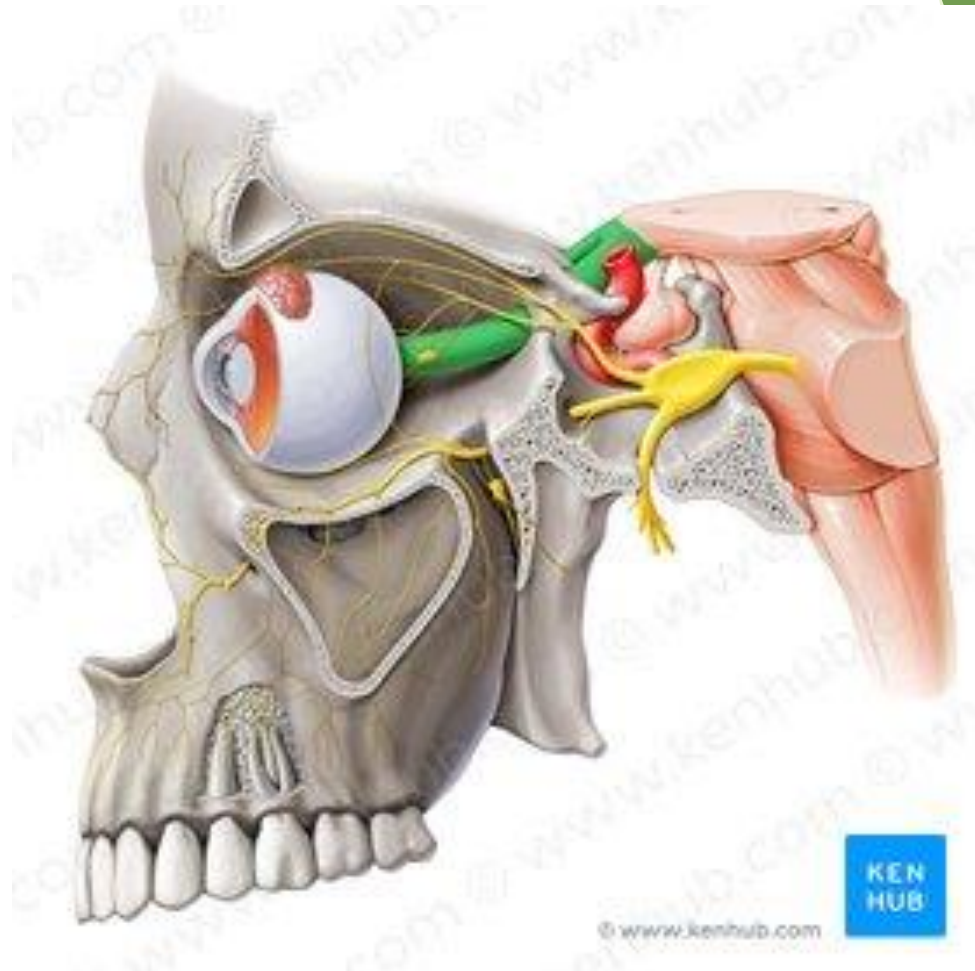


# OPTIC NERVE

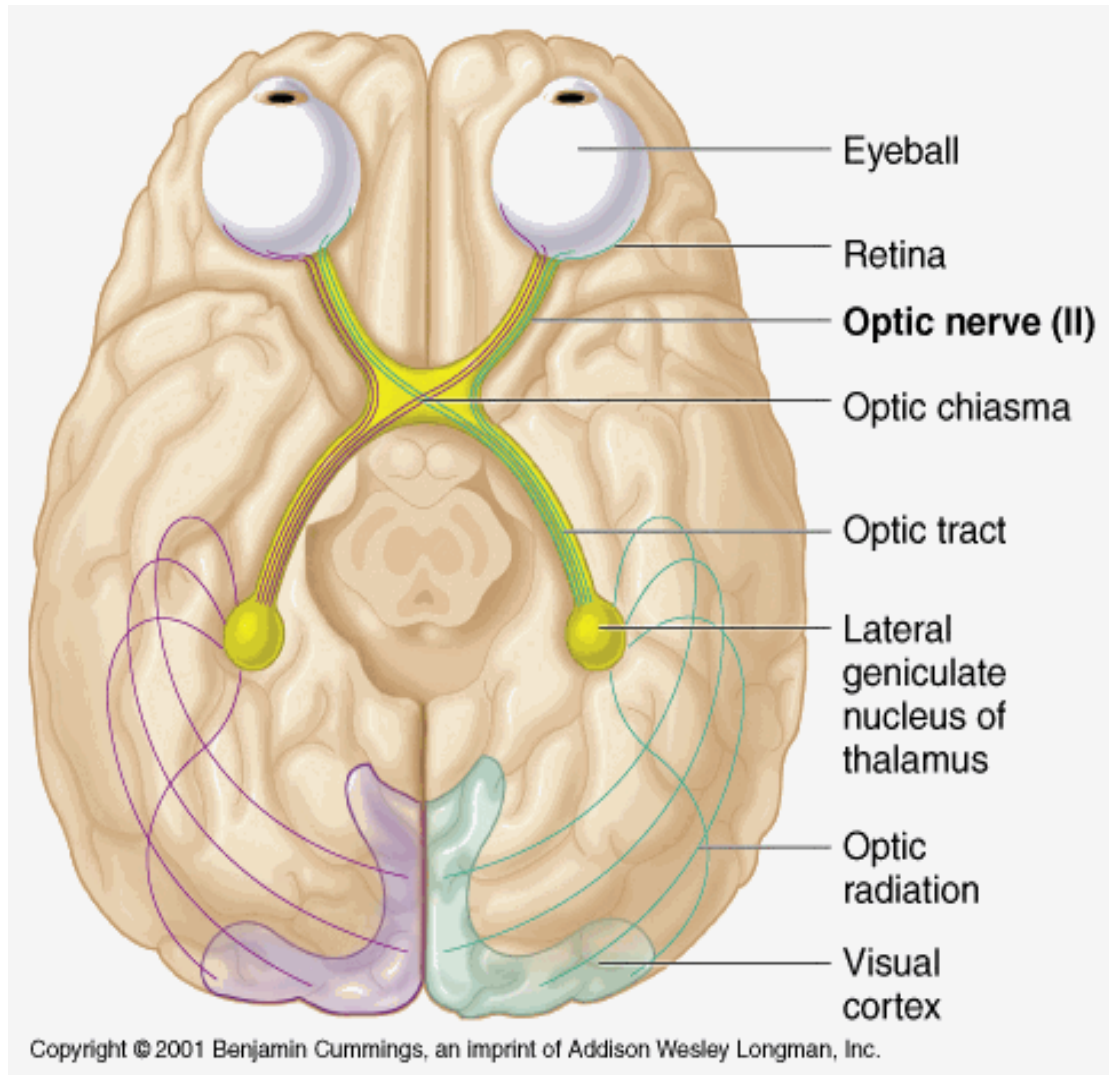
ZOHRA BIBI  
ROLL NO. 12

# Optic Nerve (CN II)

- ▶ Extension of Central Nervous System (CNS)
- ▶ Second of several pairs of cranial nerves (CN II)
- ▶ Transmits sensory information for vision in the form of electrical impulses from eye to brain



## OPTIC NERVE (CN II) CONTD...



- ▶ Optic Disc
- ▶ Passes the posterior orbit
- ▶ Emerges through optic canal
- ▶ Optic Chiasm
- ▶ Optic Tract to visual Cortex

VISUAL FIELD

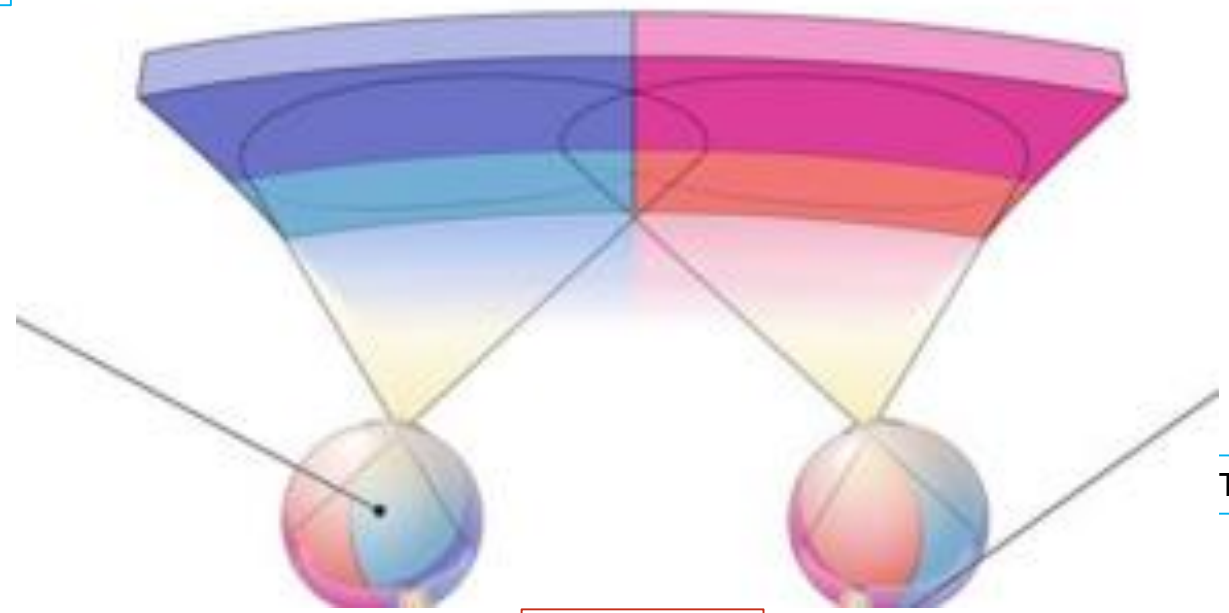
LEFT EYE

RIGHT EYE

TEMPORAL RETINA

TEMPORAL RETINA

NASAL RETINA



LEFT EYE:

LEFT VISUAL FIELD: LIGHT TRAVELS TO NASAL RETINA

RIGHT VISUAL FIELD: LIGHT TRAVELS TO TEMPORAL RETINA

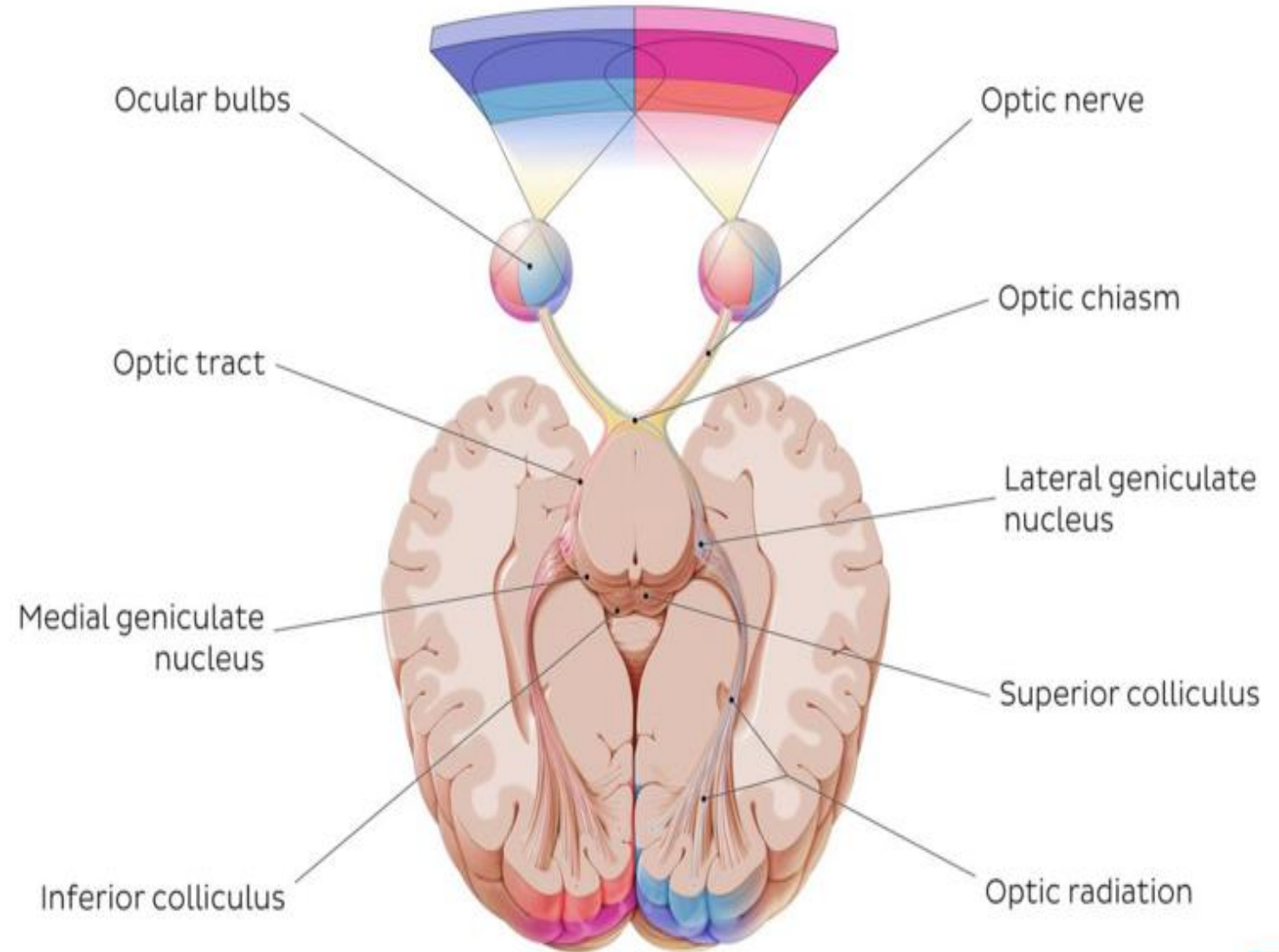
RIGHT EYE:

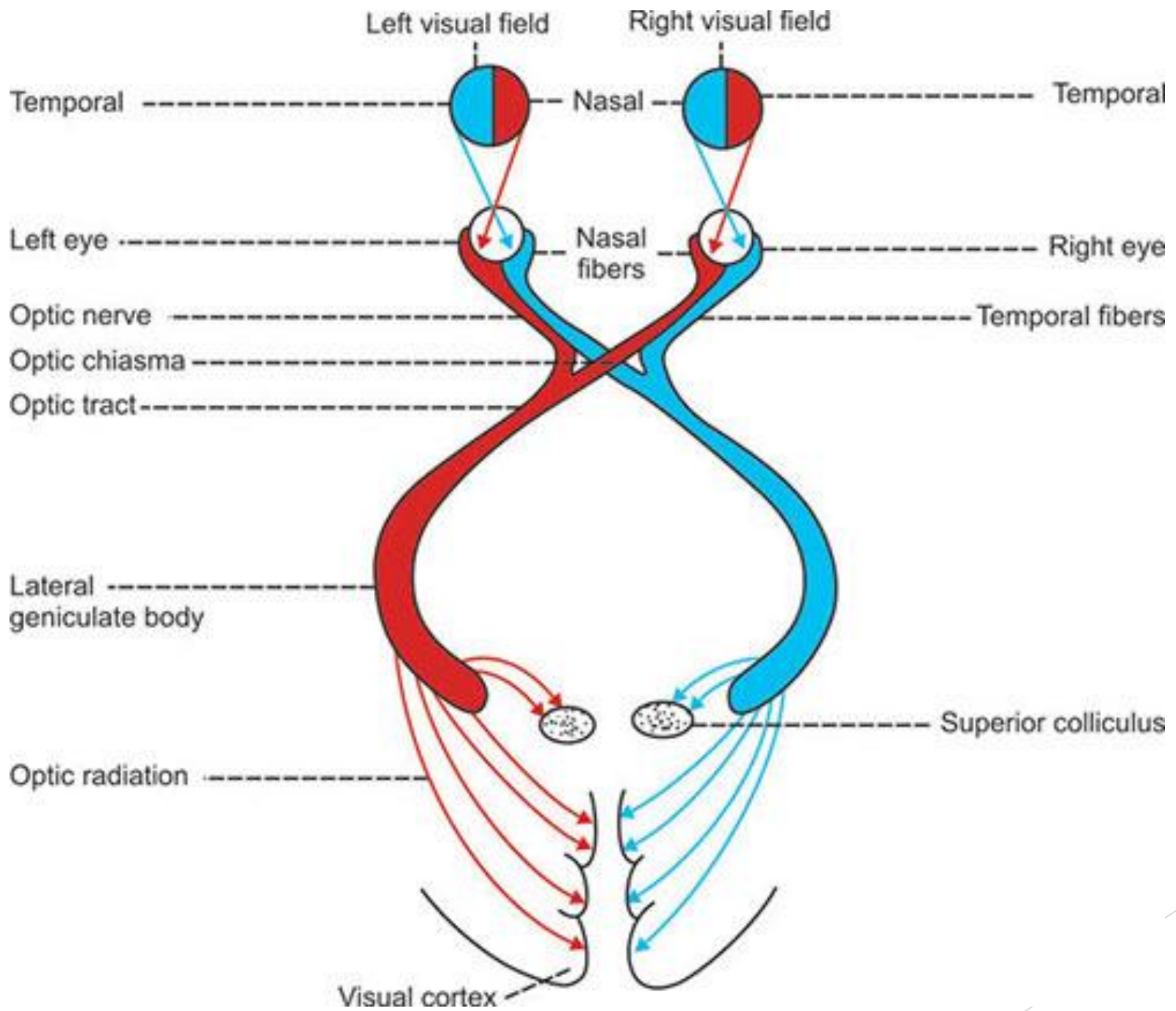
LEFT VISUAL FIELD: LIGHT TRAVELS TO TEMPORAL RETINA

RIGHT VISUAL FIELD: LIGHT TRAVELS TO NASAL RETINA

# VISUAL PATHWAY:

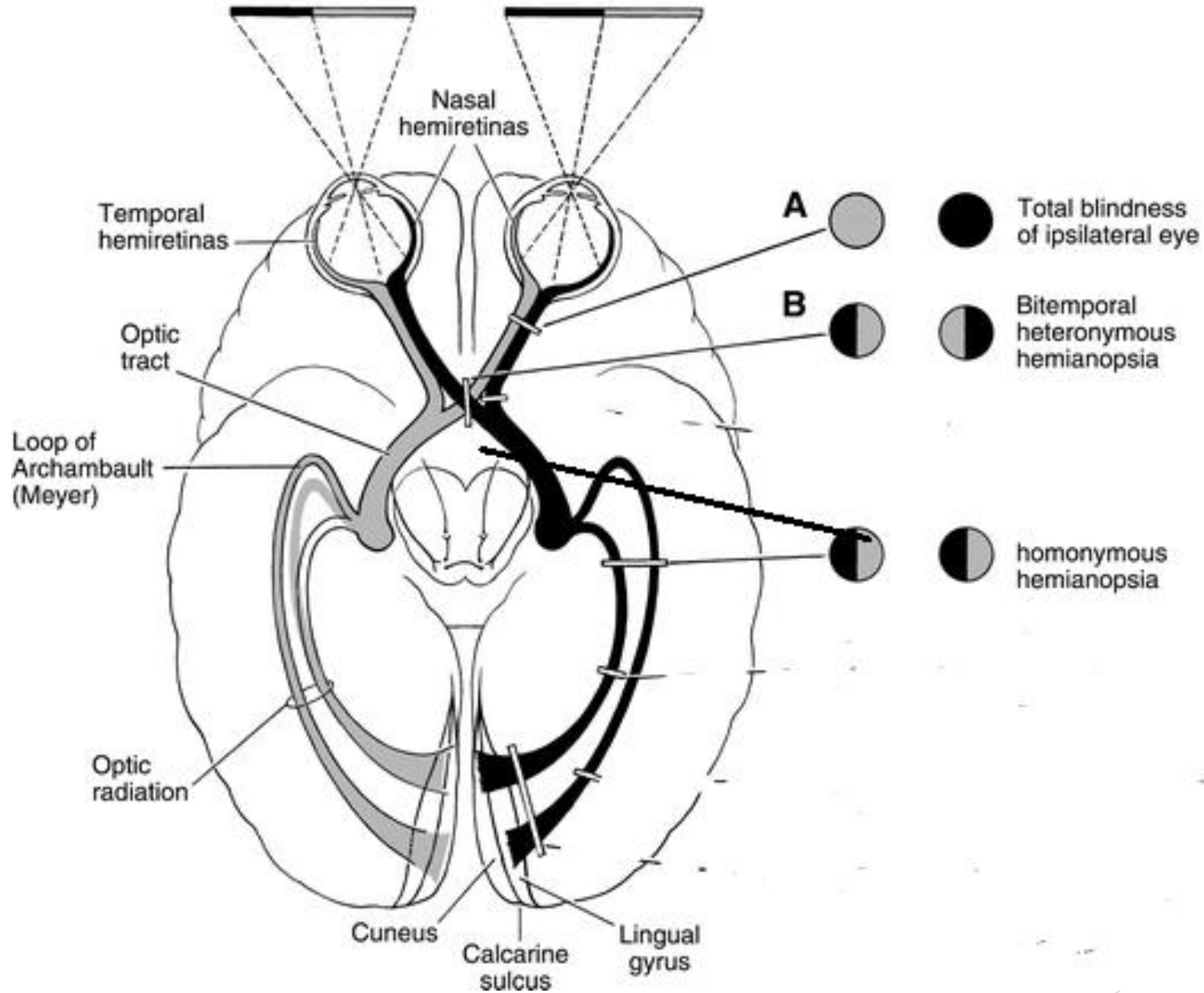
- ▶ Nerve emerges from Sup. Orbital fissure
- ▶ Joins with nerve with opposite side at optic chiasm
- ▶ Temporal fibers pass as such while nasal fibers decussate
- ▶ Right and left optic tracts
- ▶ Lateral geniculate body
- ▶ Optic radiation
- ▶ Occipital lobe (Visual Cortex)
- ▶ Brodmann's Areas 17, 18,19





# CLINICAL CORRELATES

## FIELDS OF VISION



THANK YOU

The background features abstract, overlapping geometric shapes in various shades of green, ranging from light lime to dark forest green. These shapes are primarily located on the right side of the frame, with some extending towards the center. The overall composition is clean and modern.