

# ORBITAL CAVITY BOUNDARIES AND SURFACES

*Sobia Hina*



# ORBIT

- ◉ Orbit is pyramidal cavity with its base anterior and its apex posterior.
- ◉ Each orbit is made up of 7 bones.

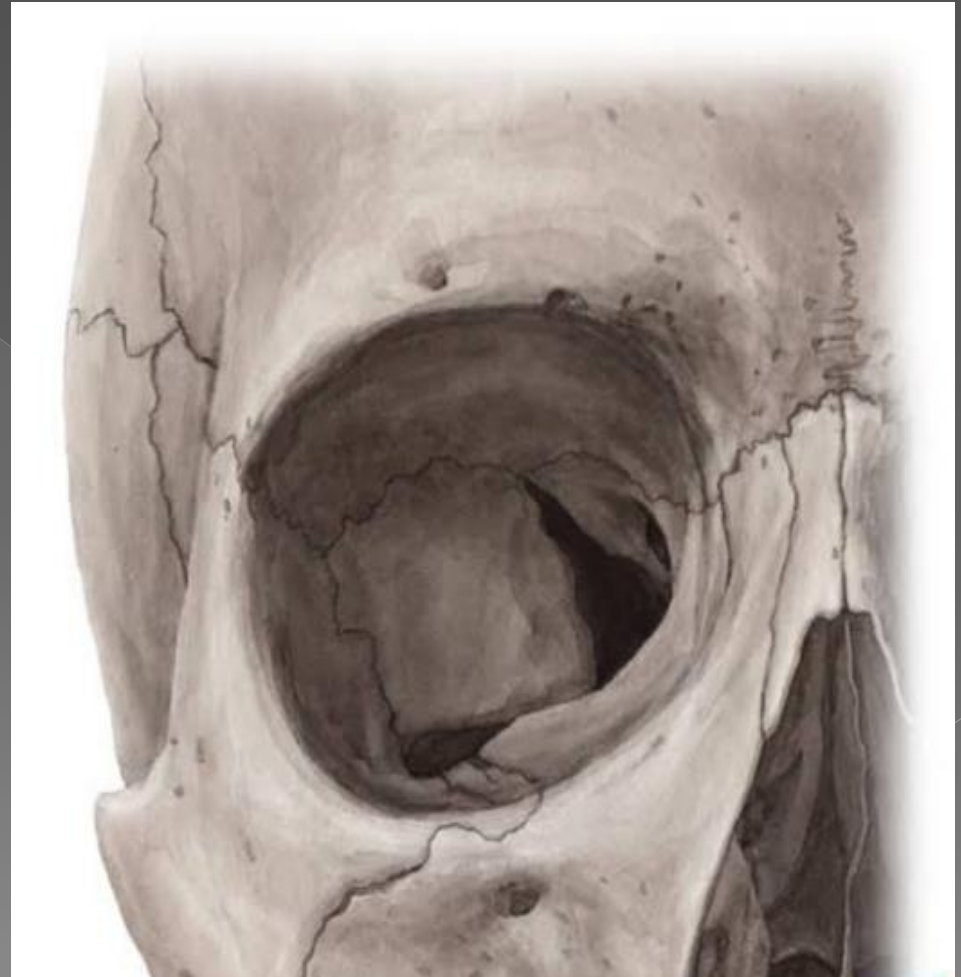
# ORBITAL MARGINS

## 4 MARGINS

- .Superior
- .Lateral
- .Medial
- .Inferior

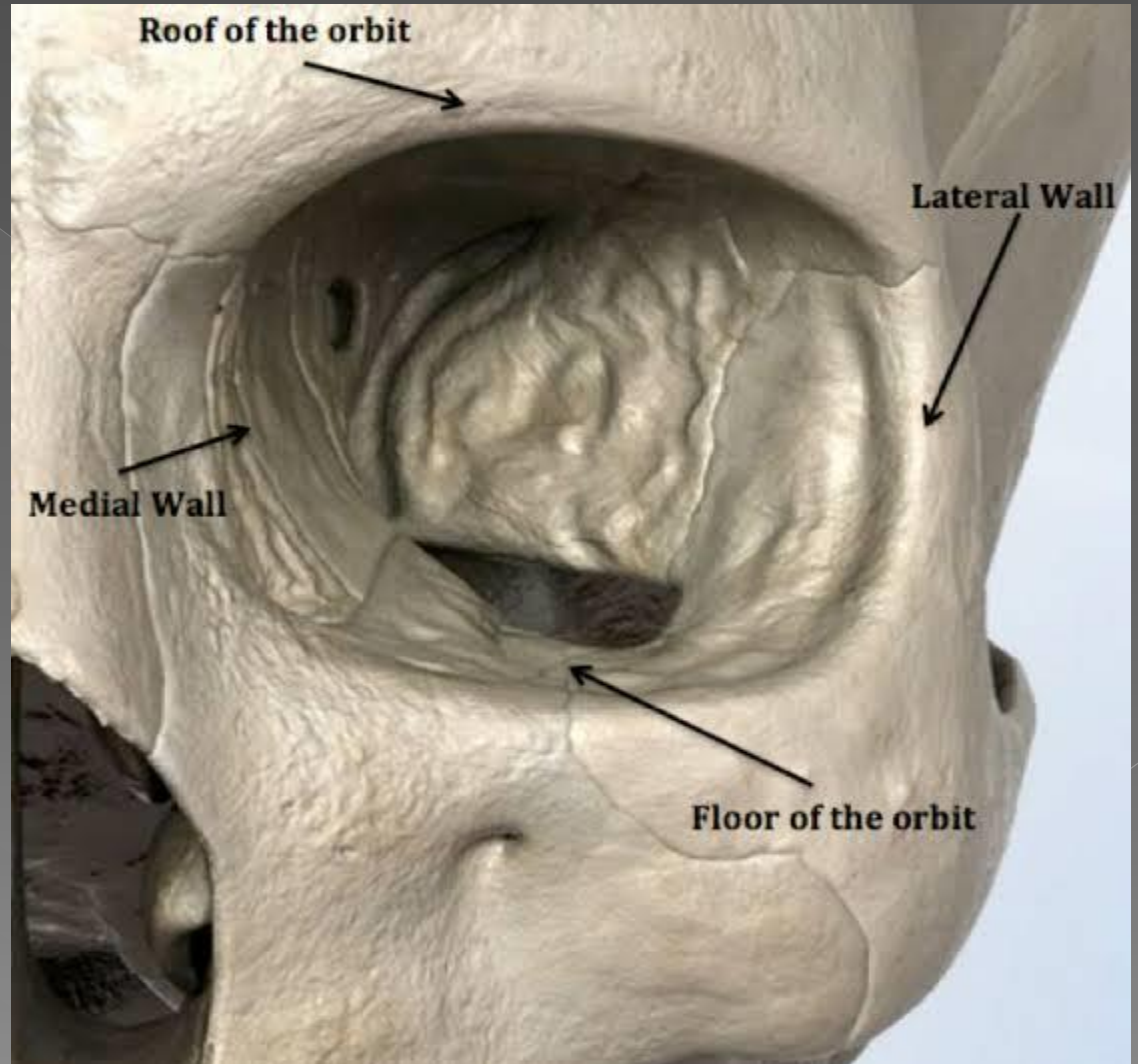


- **Superior margin**
- **Frontal bone**
- **lateral margin**
- **Process of frontal bone and zygomatic bone**
- **Medial margin**
- **Process of maxilla and frontal bone**
- **Inferior margin**
- **Zygomatic bone and maxilla**



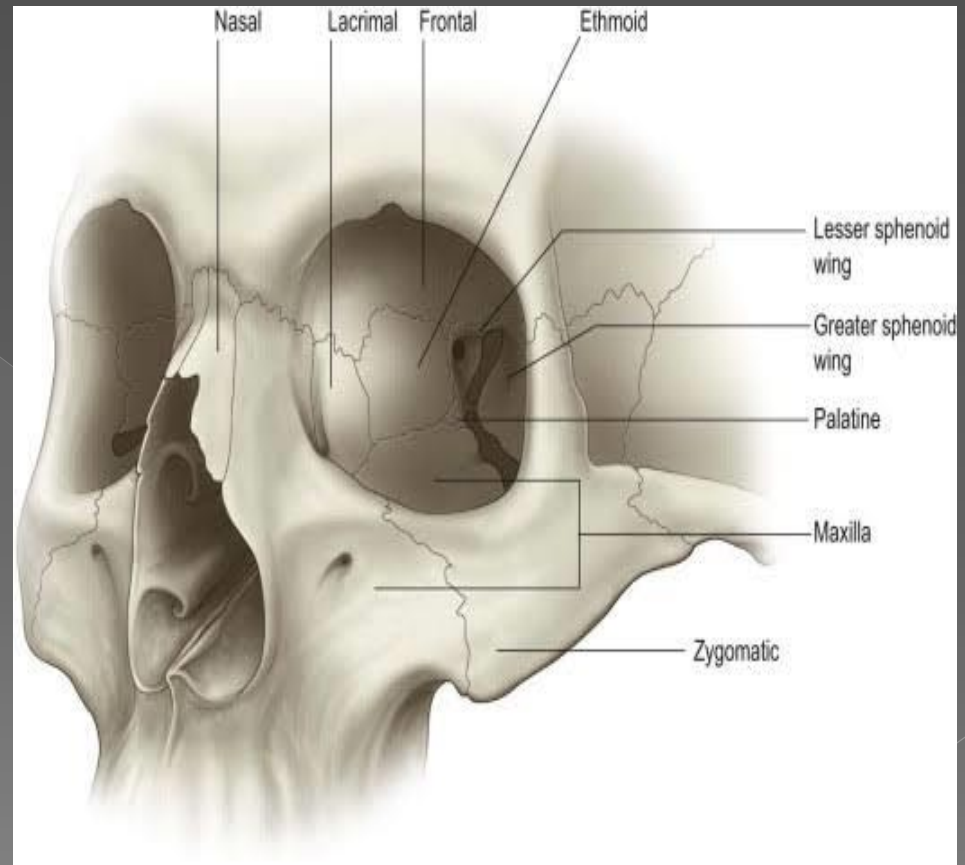
# SURFACES

- Medial
- Lateral
- Floor
- Roof



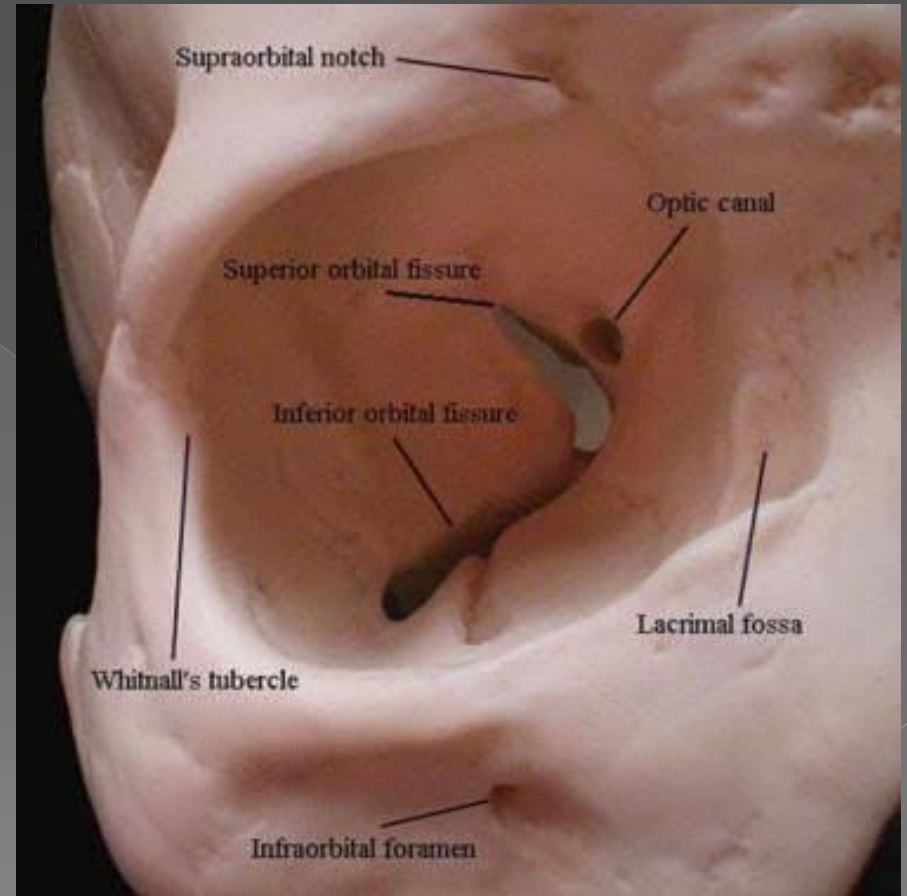
# MEDIAL WALL

- Frontal process of Maxilla
- Lacrimal bone
- Orbital plate of Ethmoid
- Body of Sphenoid



# LATERAL WALL

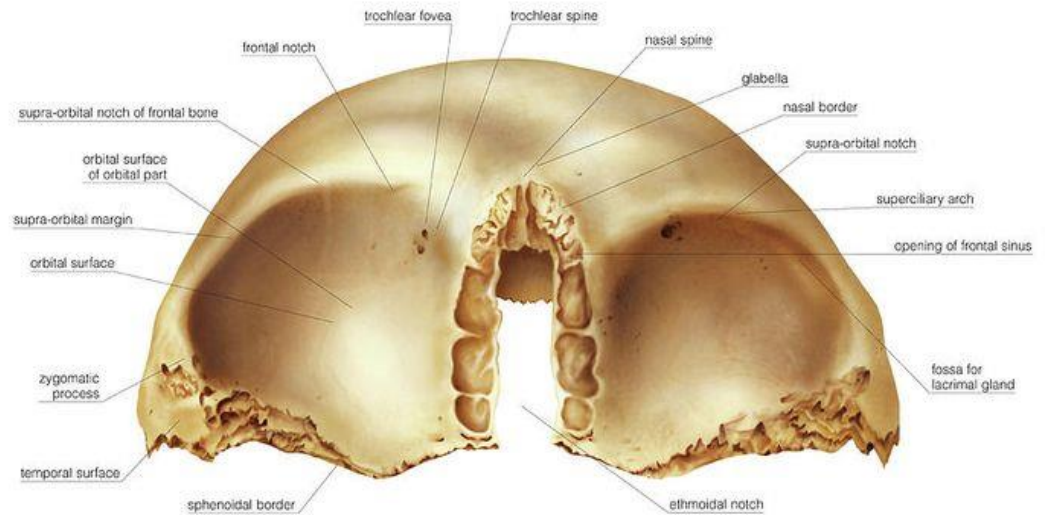
- Zygomatic bone
- Greater wing of Sphenoid





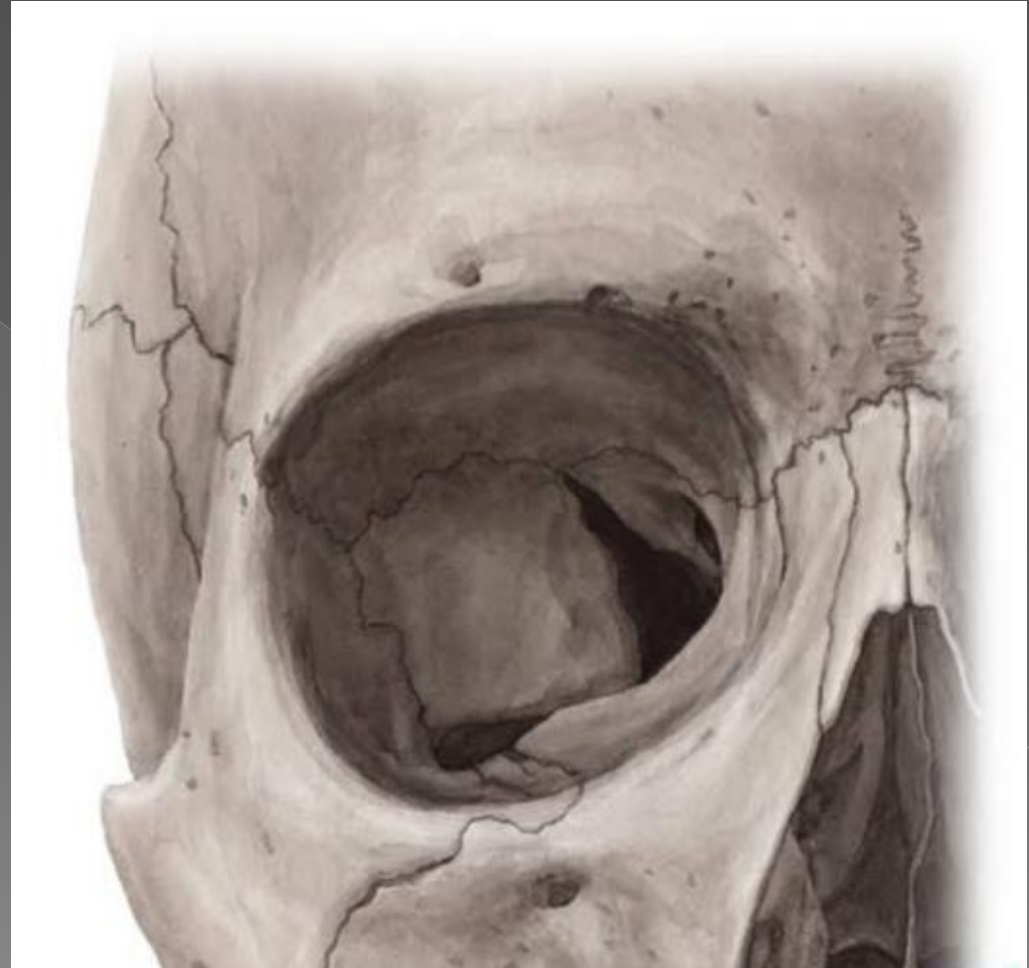
# ROOF

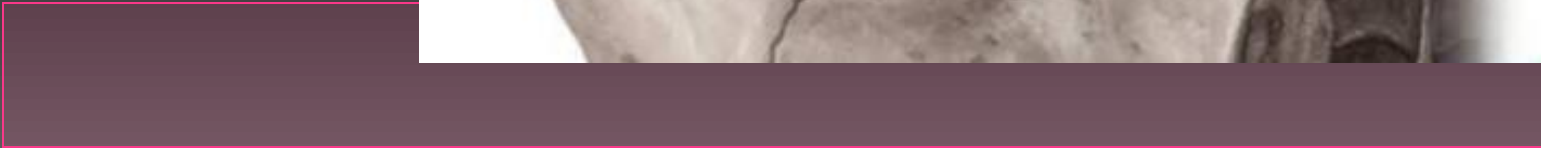
- Orbital plate of frontal bone
- Lesser wing of sphenoid bone



# FLOOR

- Maxillary bone medially
- Zygomatic bone laterally
- Palatine bone posteriorly





**THANK YOU**