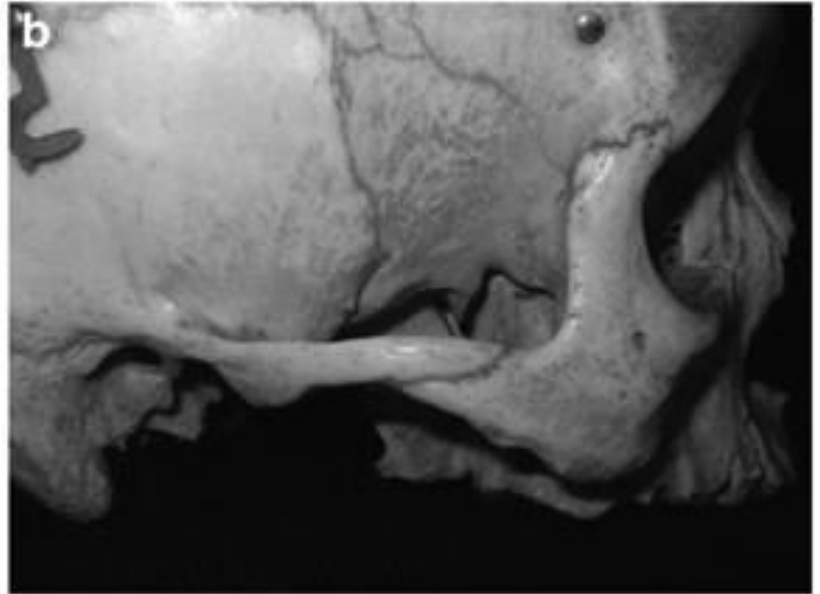
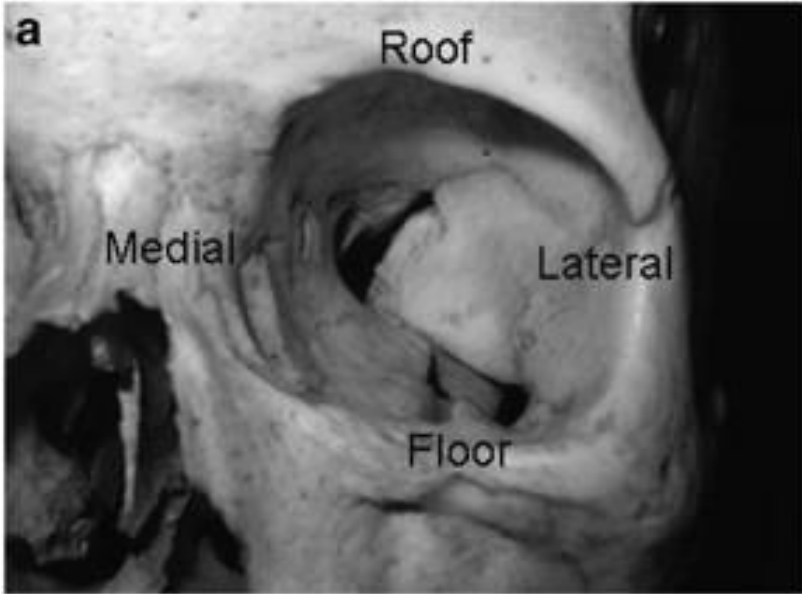


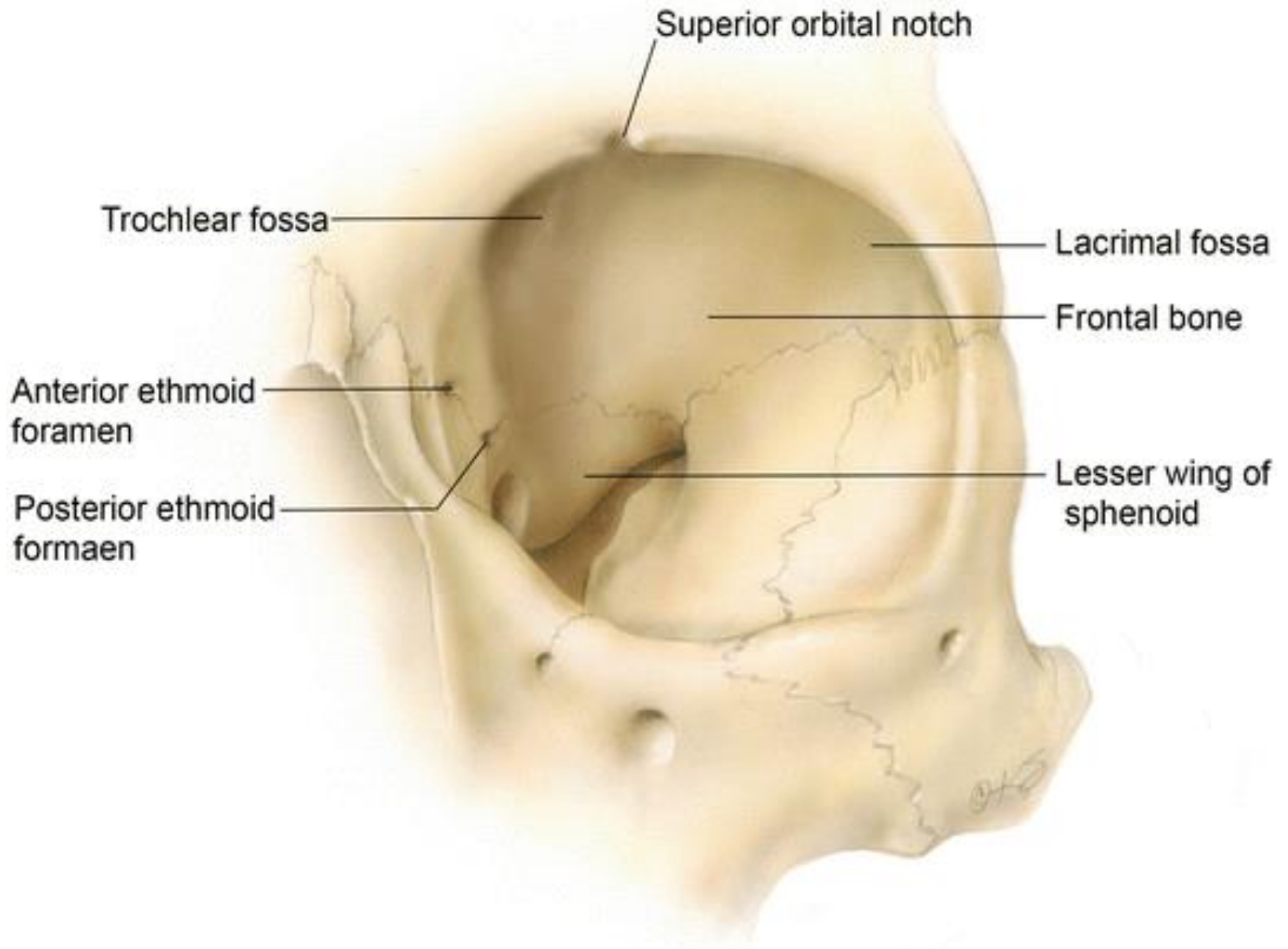
# OSTEOLOGY OF ORBIT

LAIBA BUKHARI

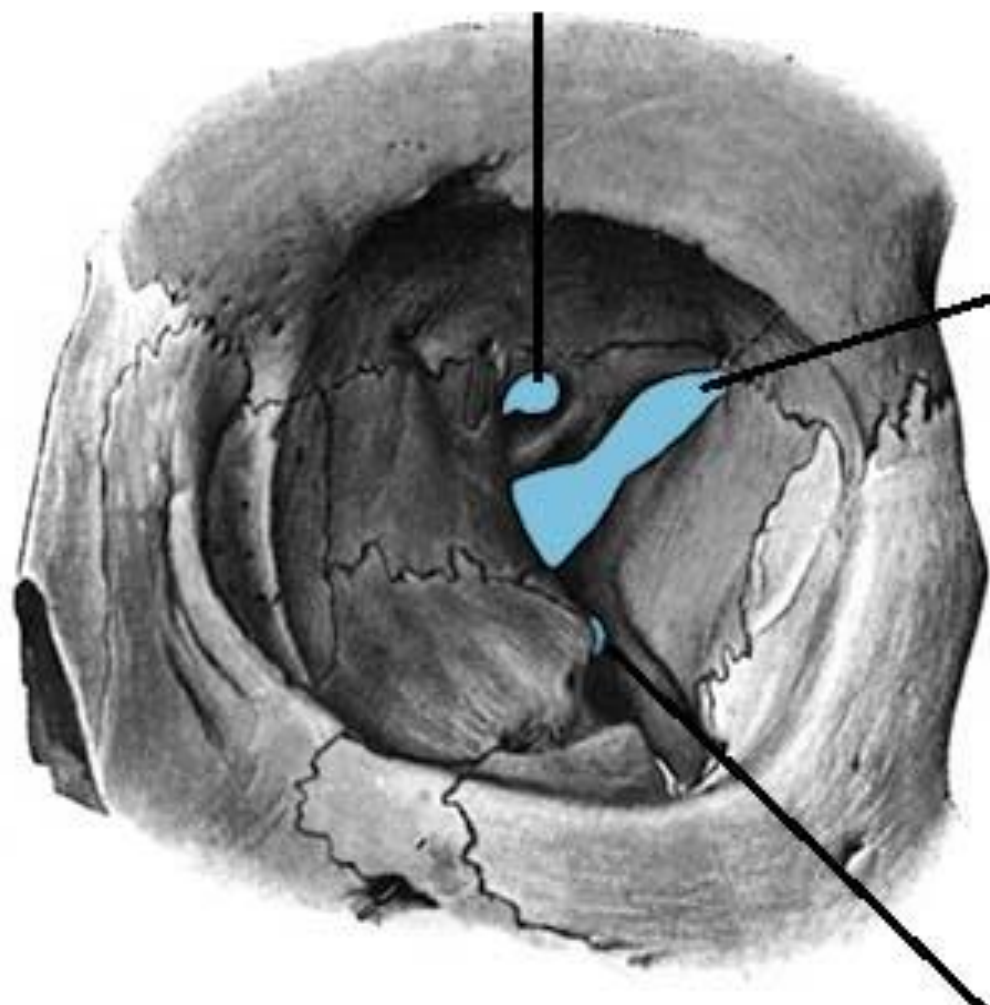


# ROOF OF ORBIT:

- Formed by:
  - 1. Orbital plate of frontal bone
  - 2. Lesser wing of sphenoid (posteriorly)
- **ANTEROLATERAL: Trochlear fossa**
- **ANTEROMEDIAL: Lacrimal fossa**



**Optic canal**



**Superior orbital fissure**

**Inferior orbital fissure**



## 2. LATERAL WALL:

- **Formed by;**
- **ANTEROLATERAL:**  
**Frontal process of zygomatic bone**
- **POSTEROLATERAL:**  
**Greater wing of sphenoid**

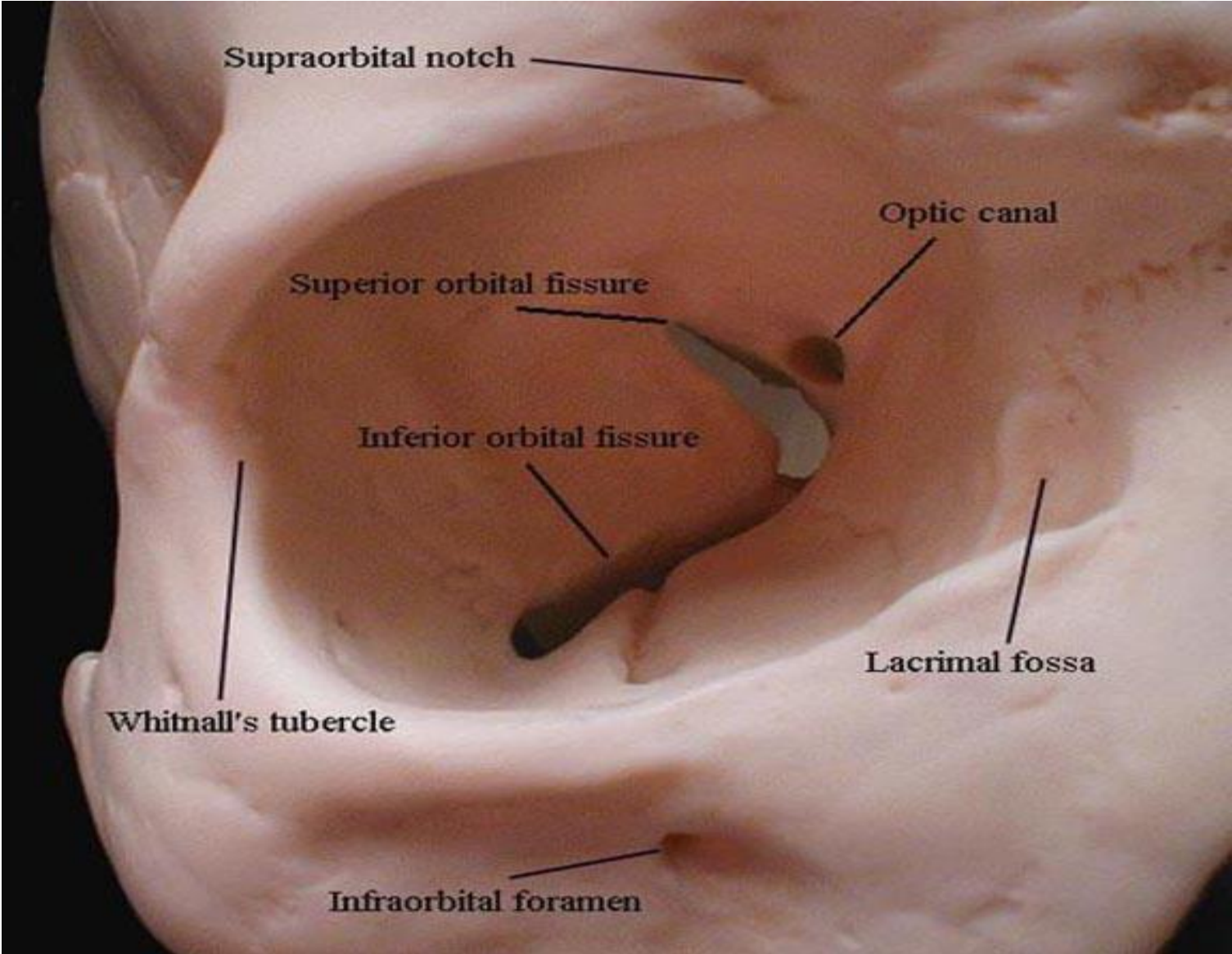
## **□ FORAMENS:**

- 1. Zygomatico temporal foramen**
- 2. Zygomaticofacial foramen**

**Whitnal's Tubercle:  
Zygomatic tubercle**

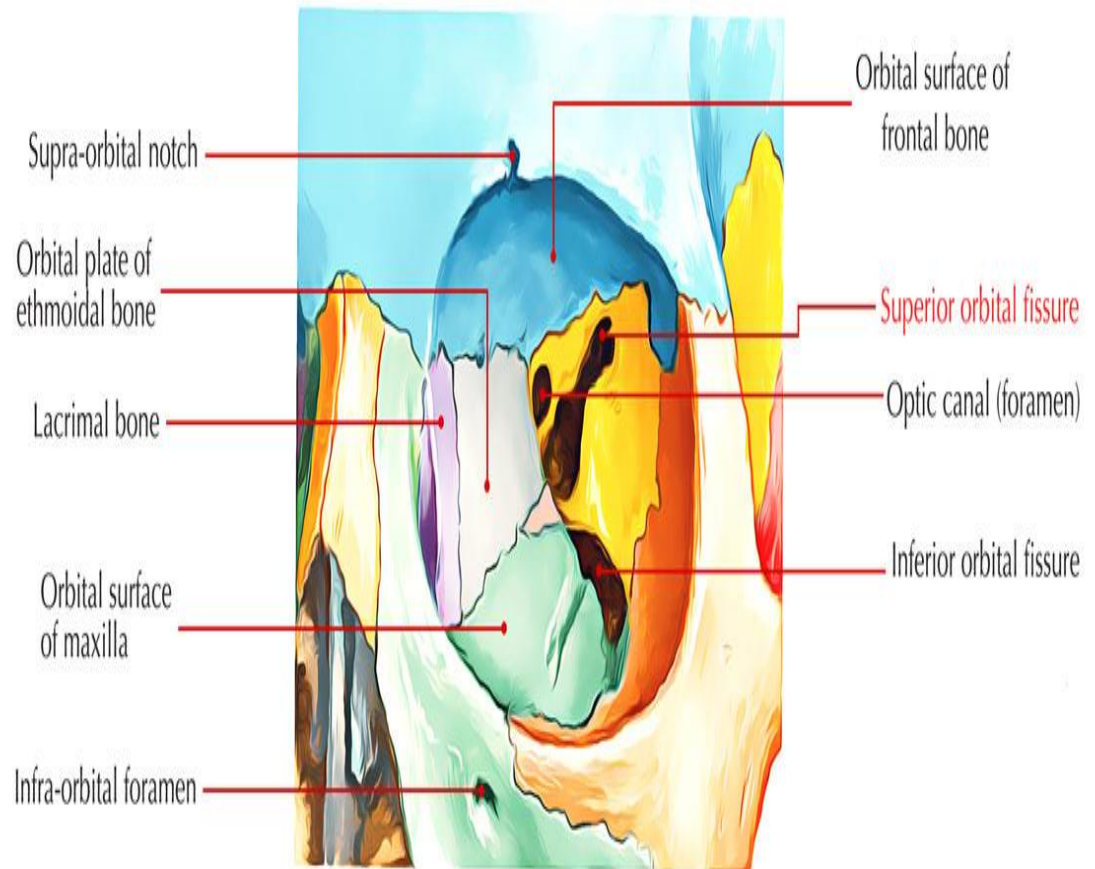


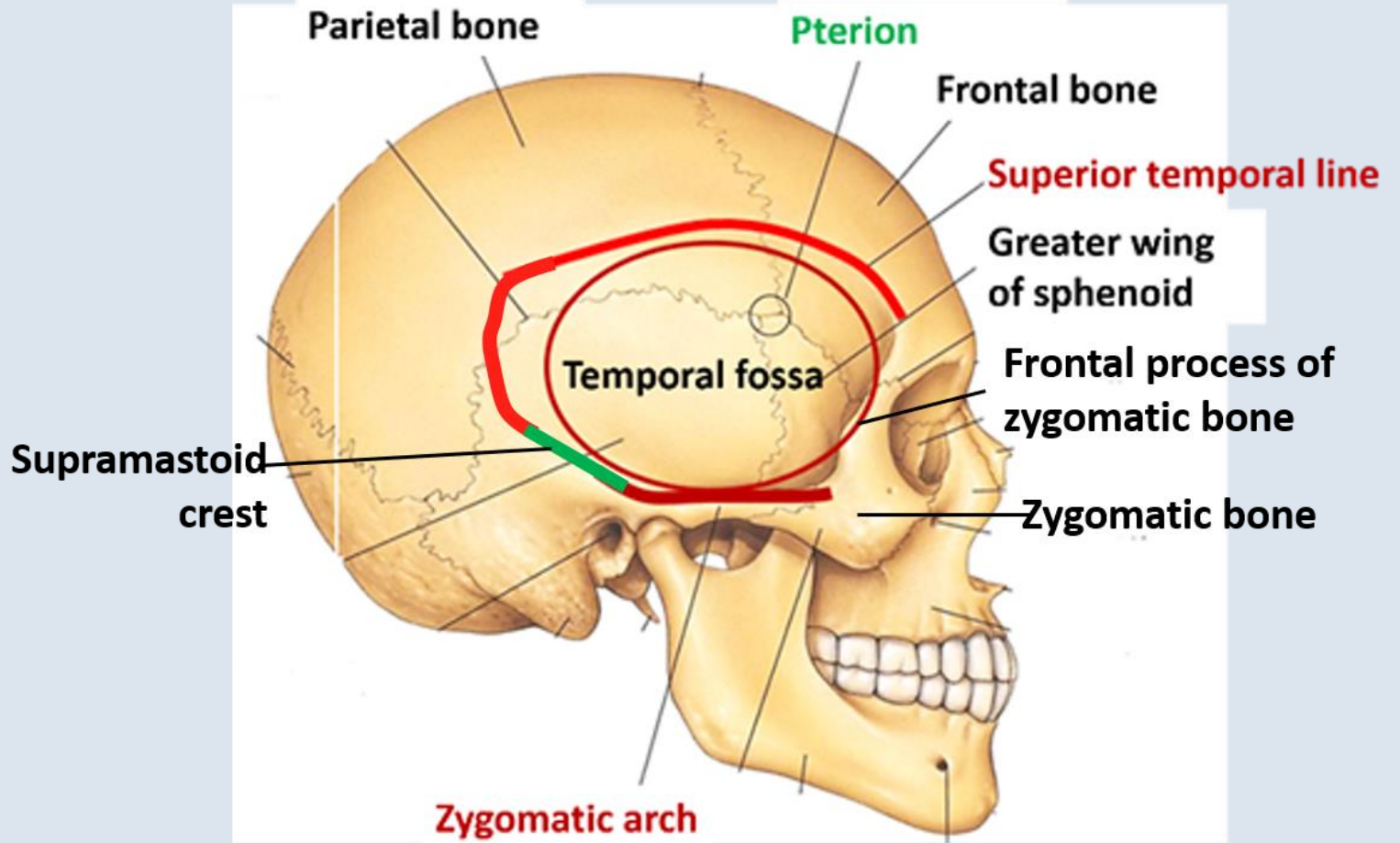




# SUPERIOR ORBITAL FISSURE:

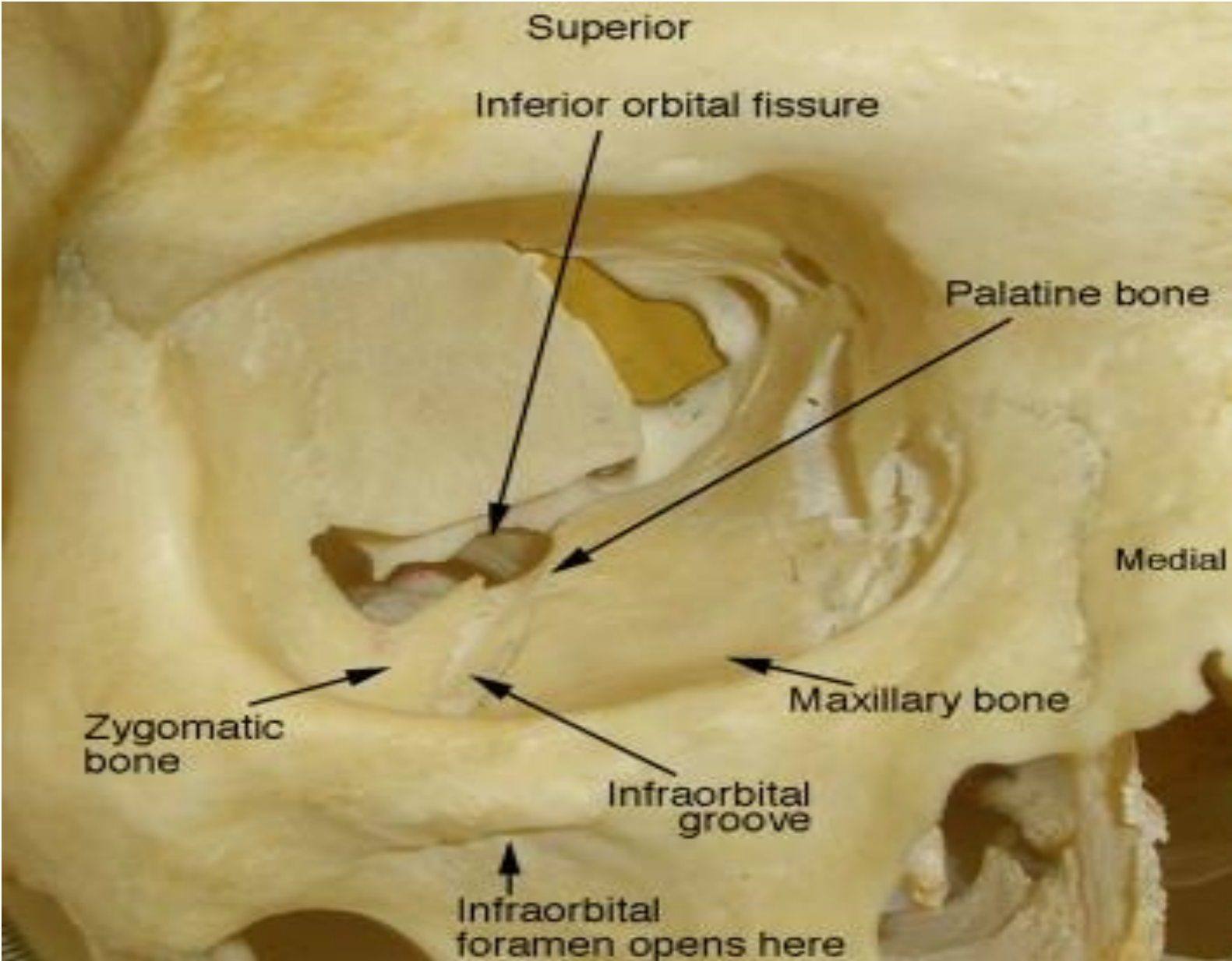
At junction of lateral wall with roof





# 3.FLOOR:

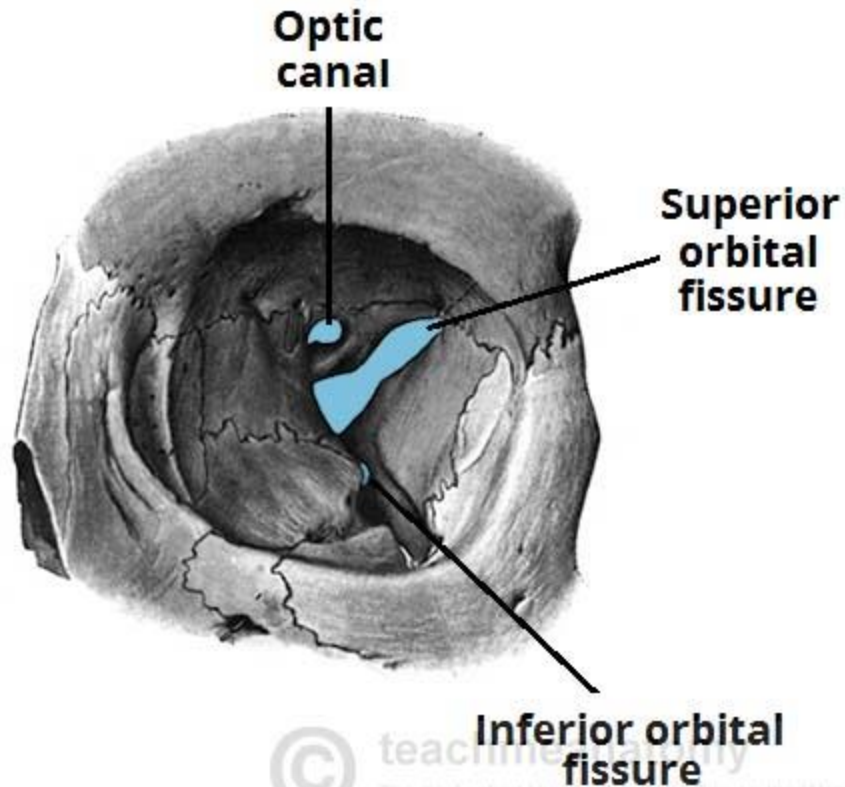
- **Formed by 3 bones:**
- **1. Maxilla (Orbital surface)**
- **2. Lateral wall of zygomatic bone**
- **3. Orbital process of palatine bone**
- **INFRAORBITAL GROOVE:**





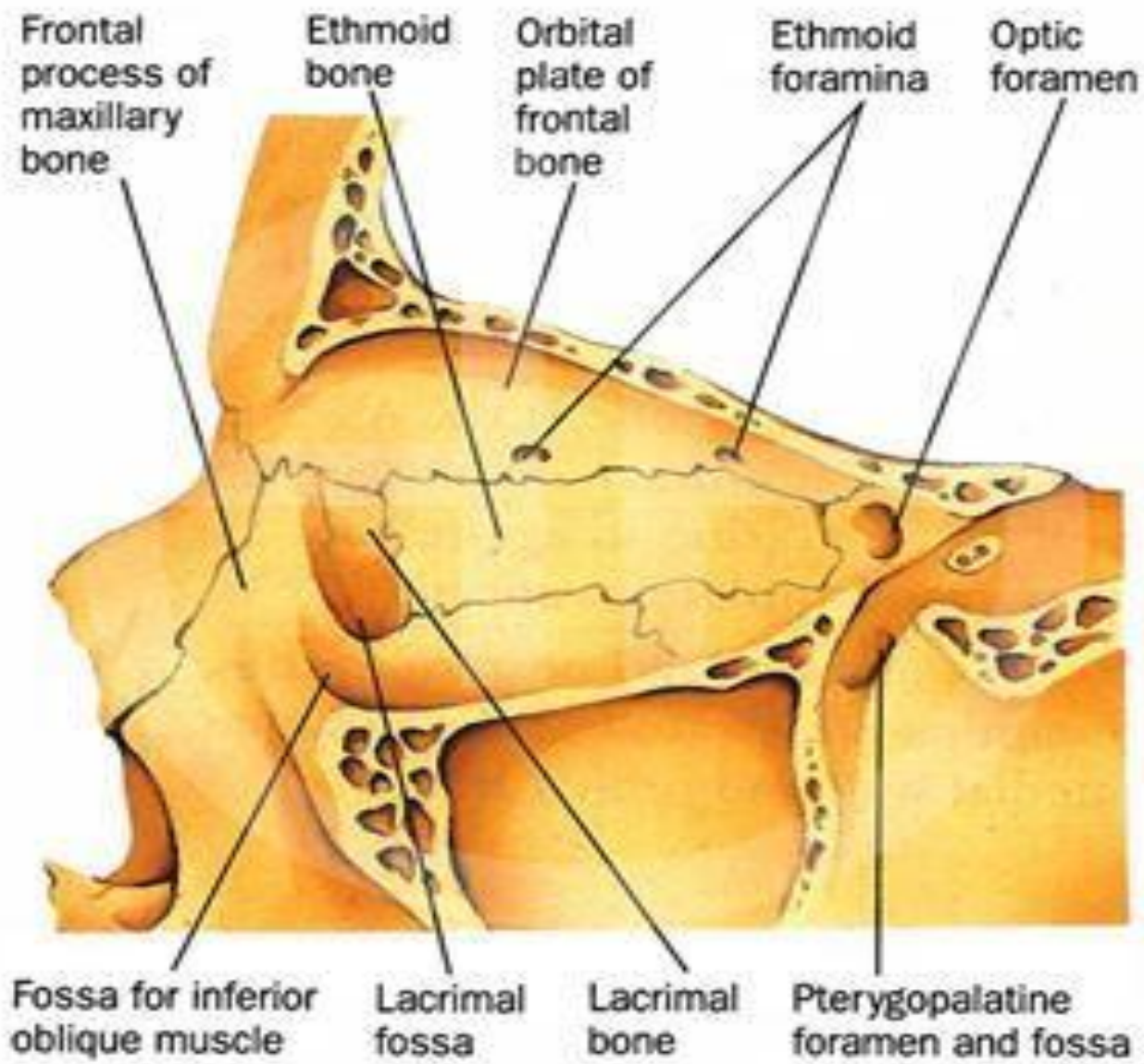
# INFERIOR ORBITAL FISSURE.

Communi  
cate  
infratempo  
ral fossa  
and orbit



# 4. MEDIAL WALL:

- **Formed by 4 bones:**
- **1. Frontal process of maxilla bone (anteriormost)**
- **2. Lacrimal bone**
- **3. Ethmoid bone**
- **4. Sphenoid bone**

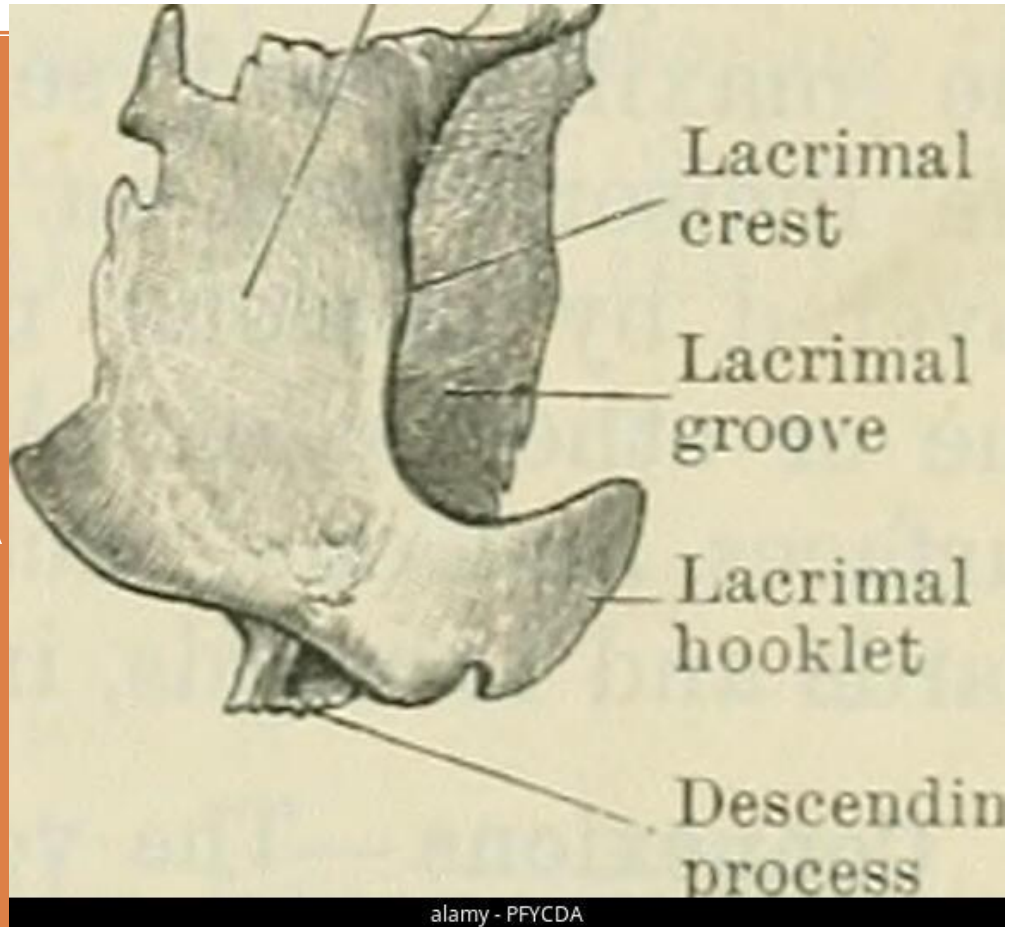


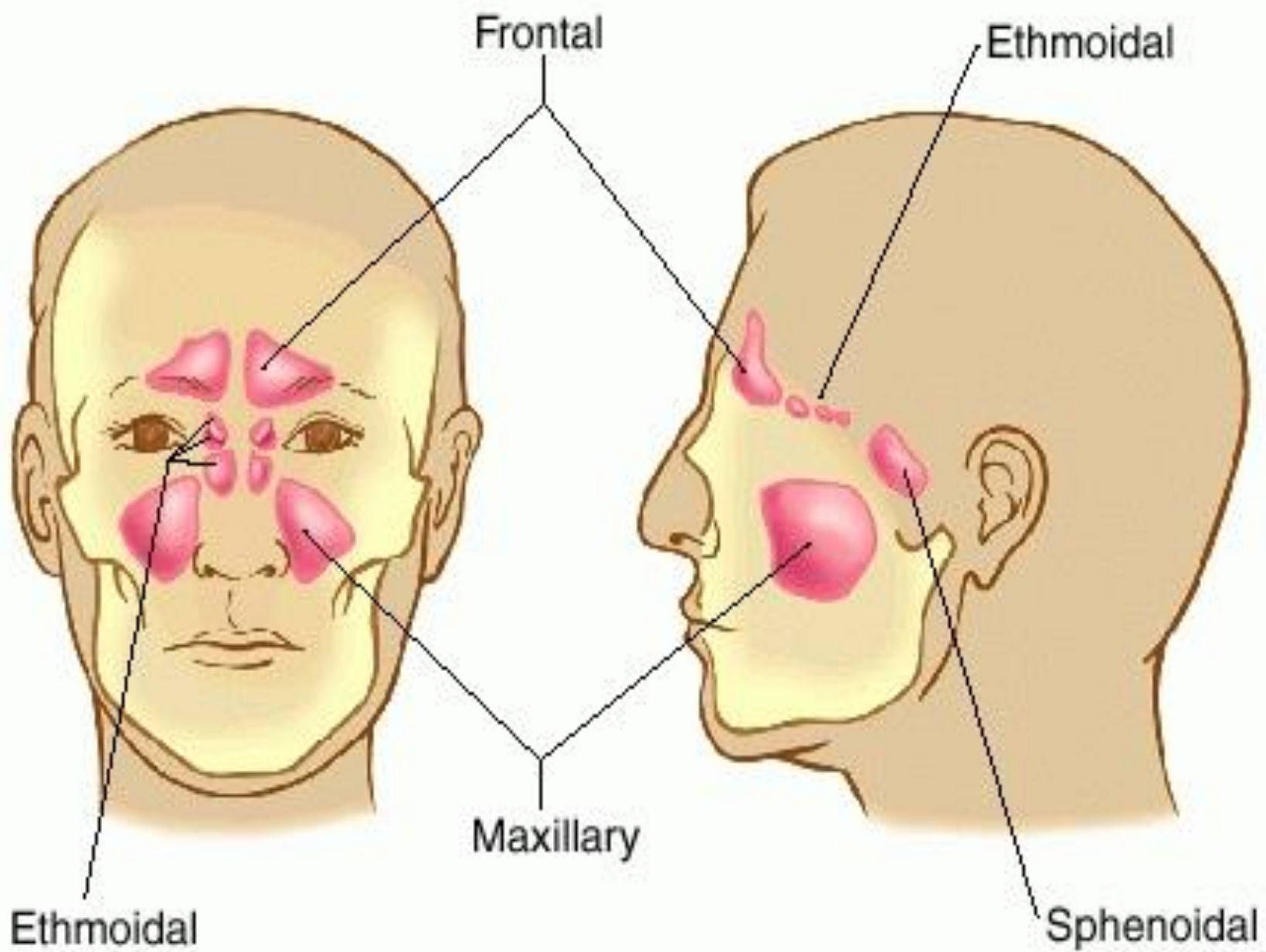


# LACRIMAL GROOVE;

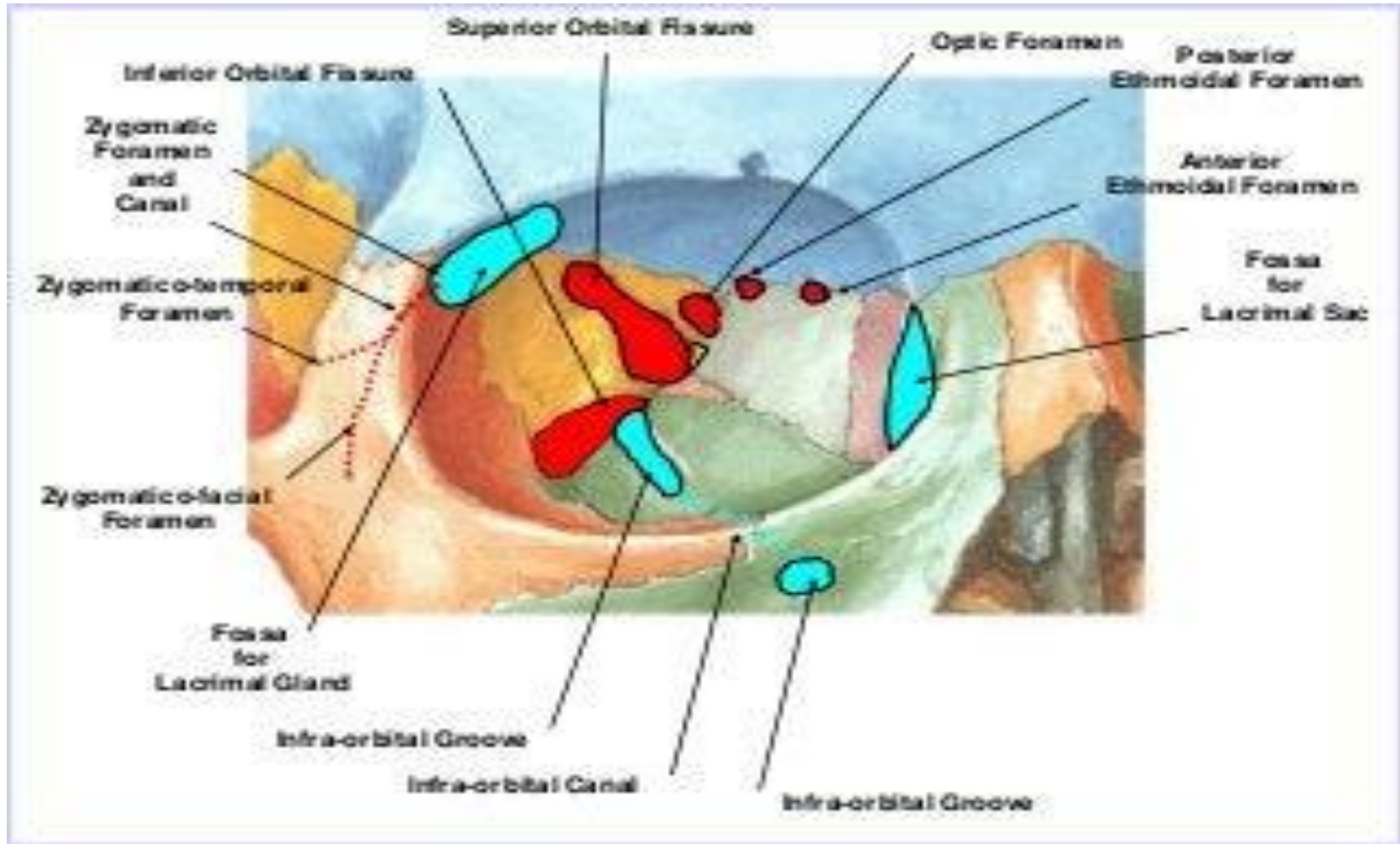
**Anterior:  
Frontal  
process  
of maxilla**

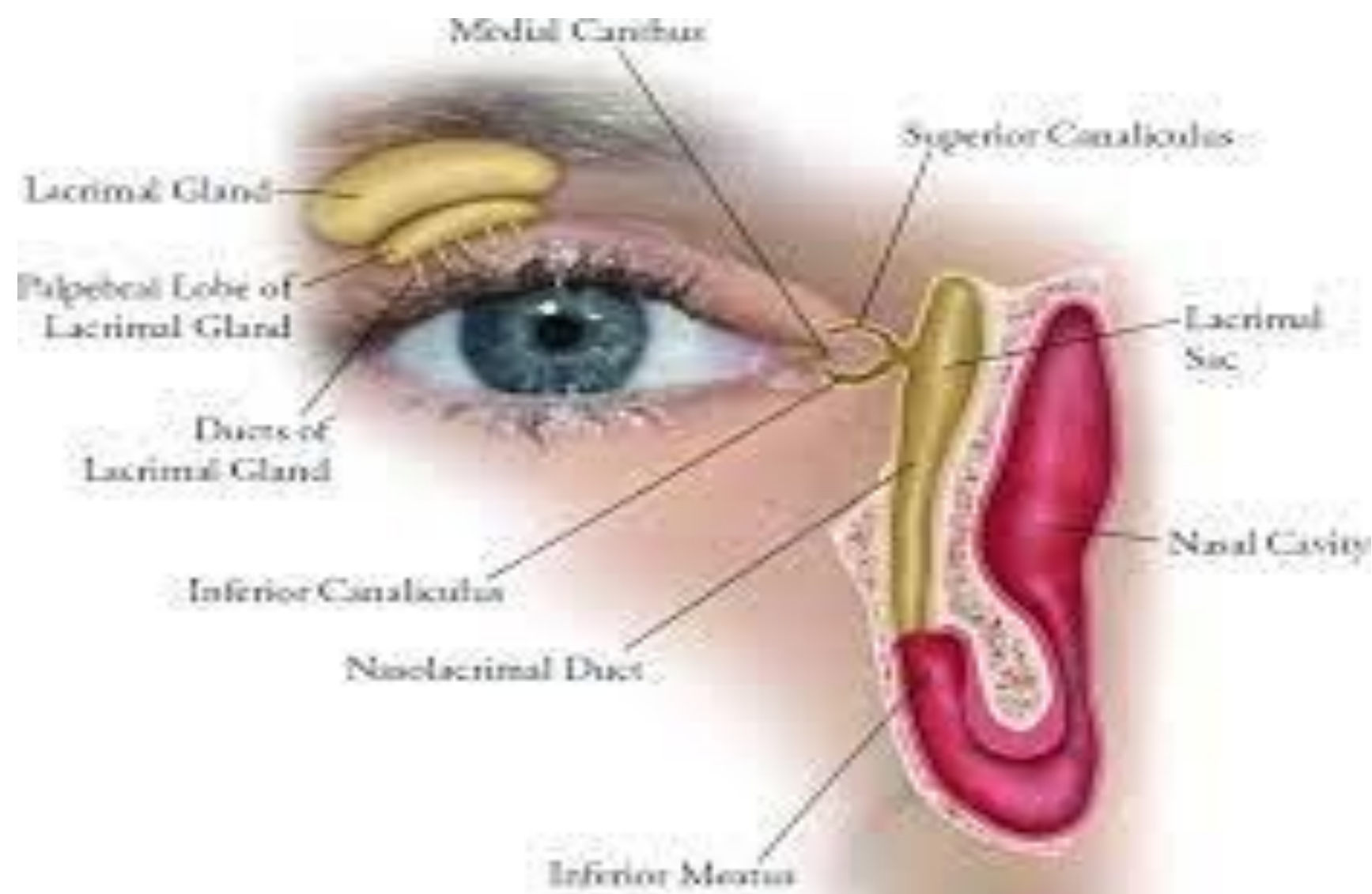
**Posterior:  
Lacrimal  
bone**



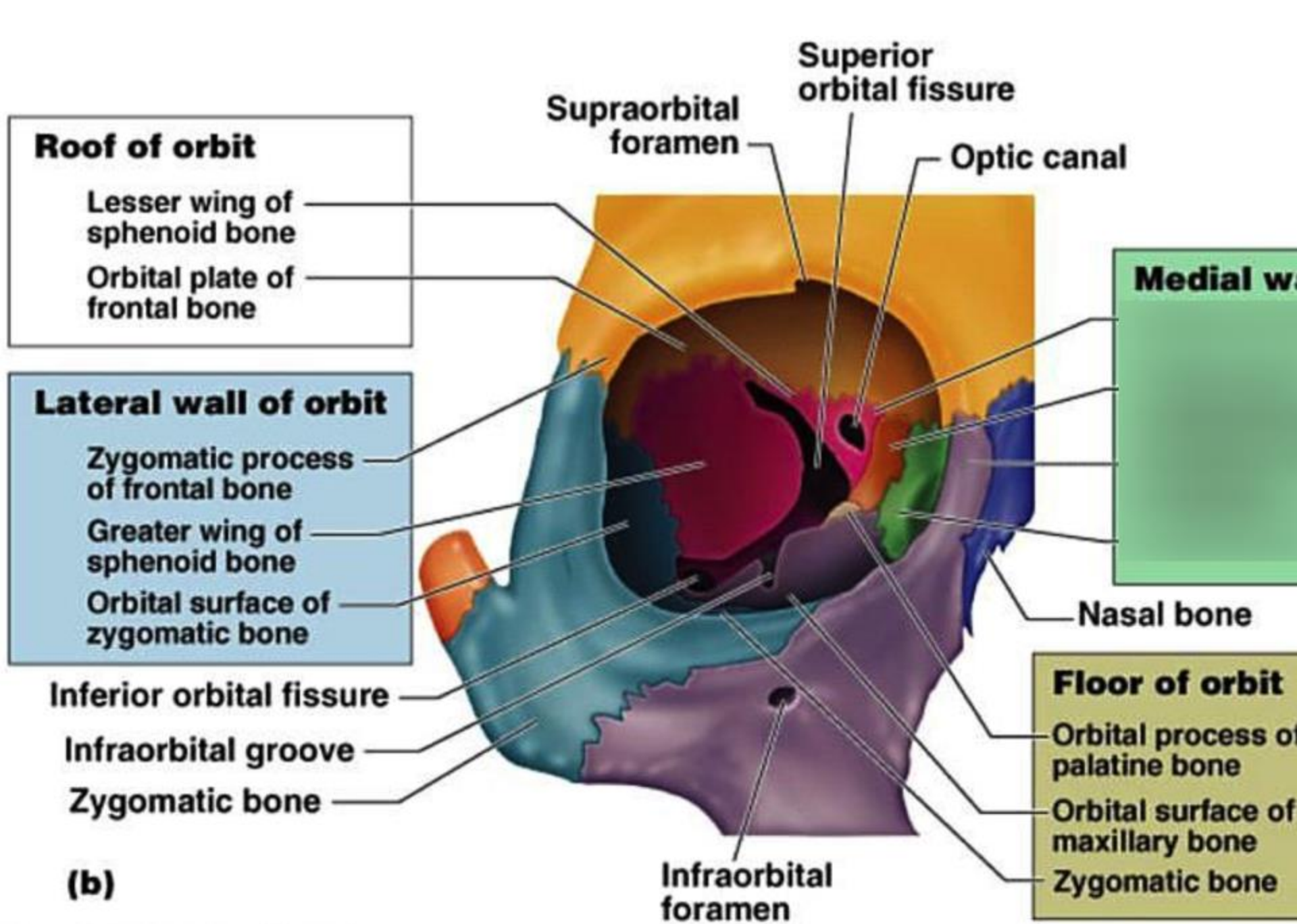


# Anterior and Posterior ethmoidal foramen:









**(b)**

Thank you!

