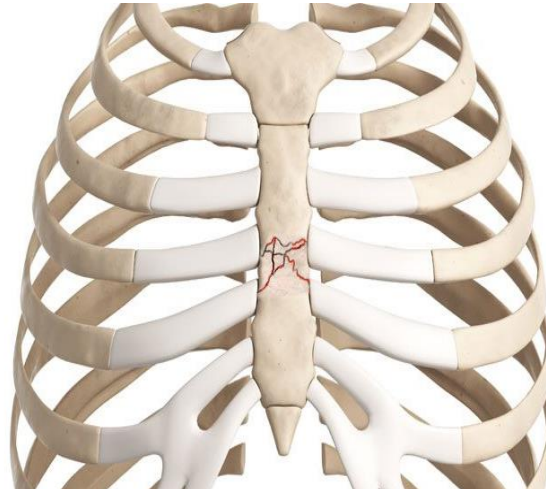


THORAX CLINICALS VISUAL DEMONSTRATION

Sternal puncture



Sternum fracture



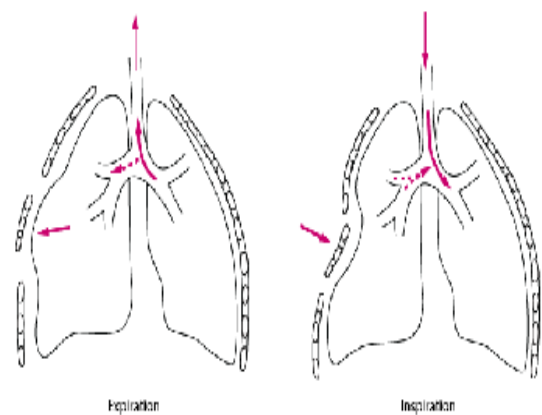
RIB CONTUSION



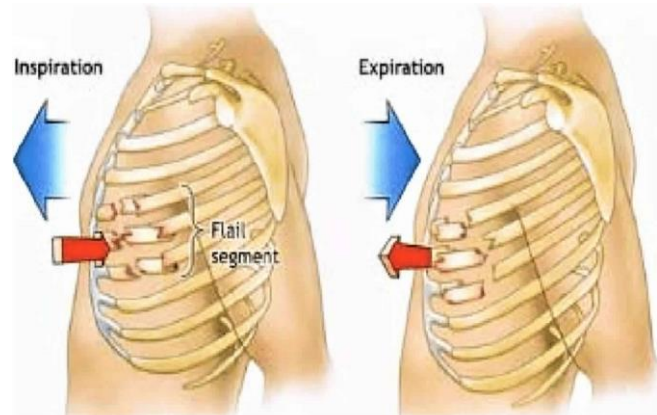
RIB FRACTURES

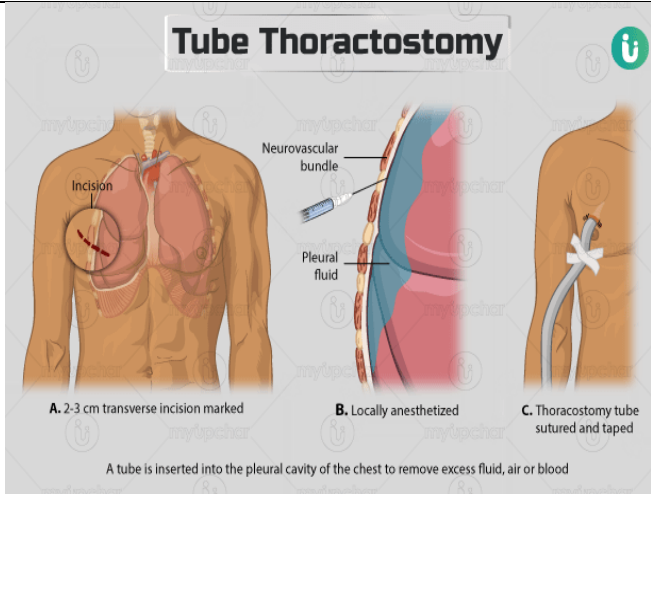
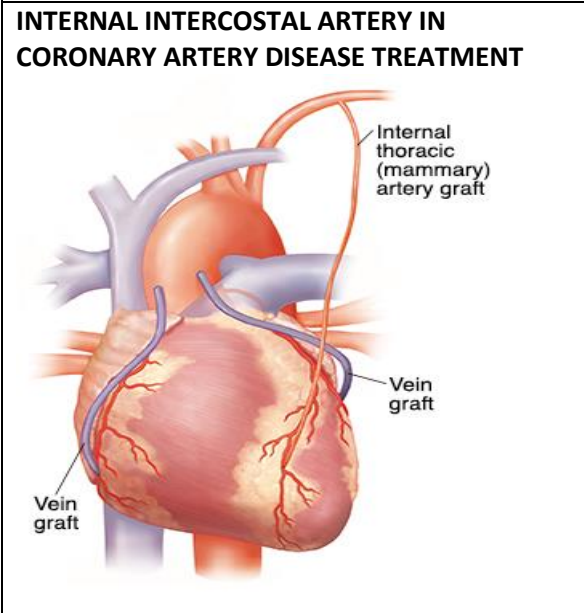
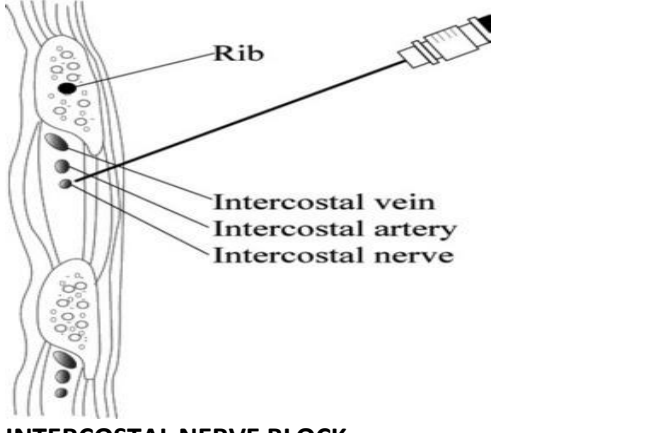
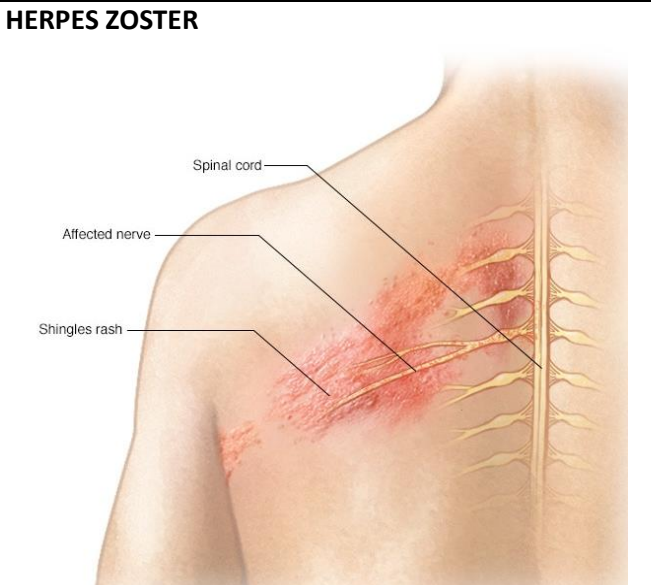
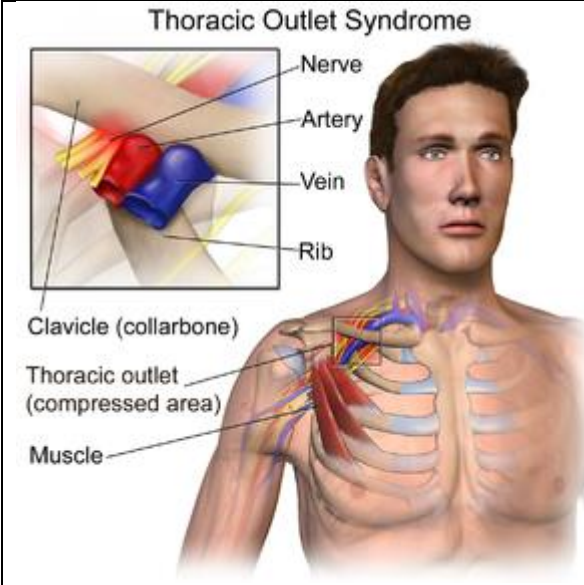


FLAIL CHEST



FLAIL CHEST

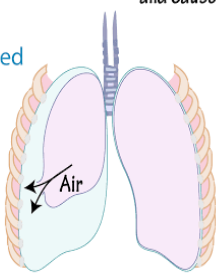




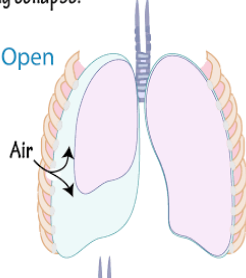
Pneumothorax

Air enters the pleural space, Disrupts negative pressure, and Causes lung collapse.

Closed

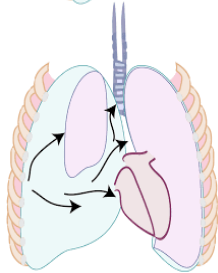


Open

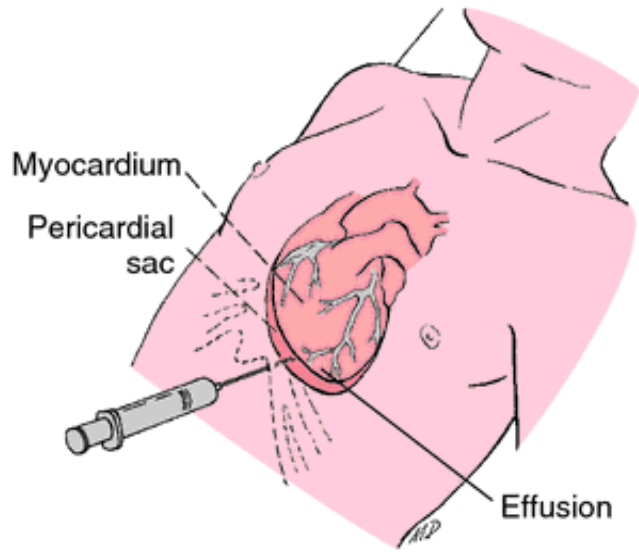


Tension

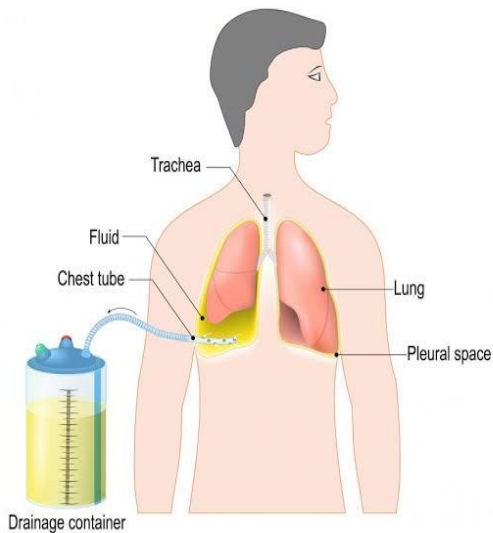
Air enters the pleural space, but cannot exit; Accumulated air compresses the lungs and shifts the mediastinum. Elevated intrathoracic pressure lowers venous return, and, consequently, cardiac output, Shock.



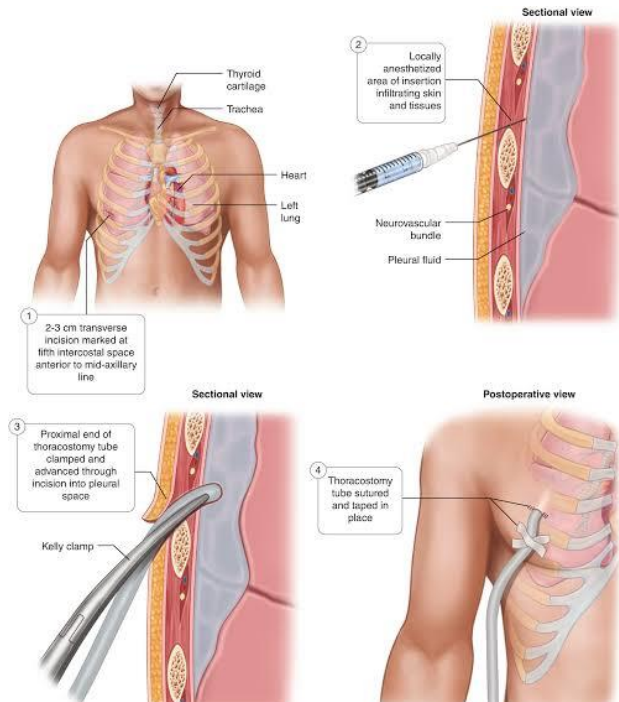
PERICARDIOCENTESIS



THORACOSTOMY



THORACOSTOMY



OPEN THORACOTOMY

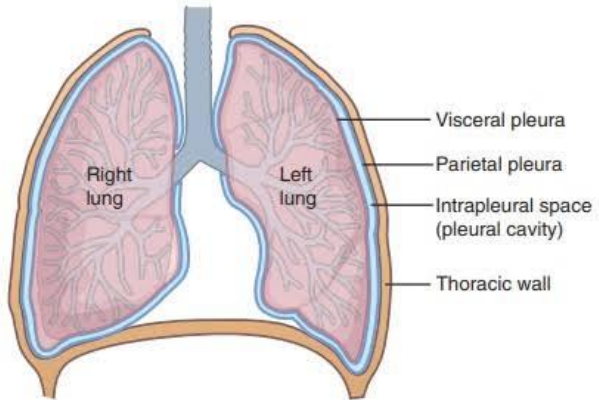
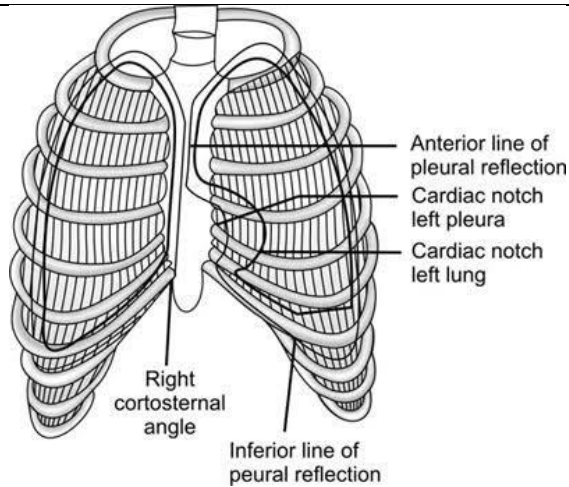
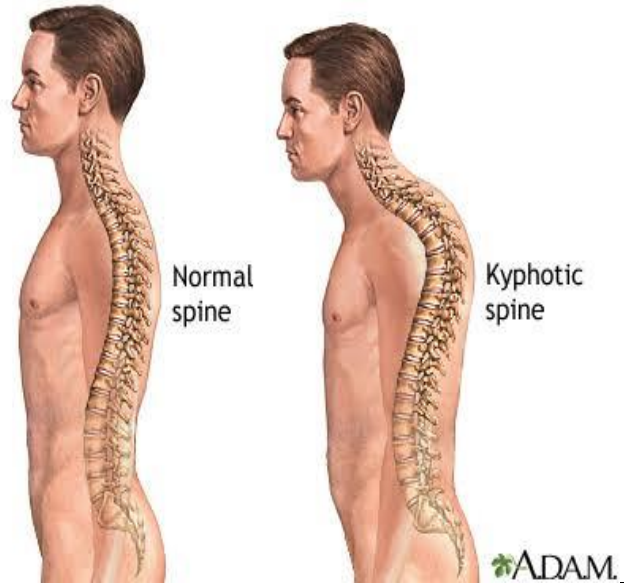
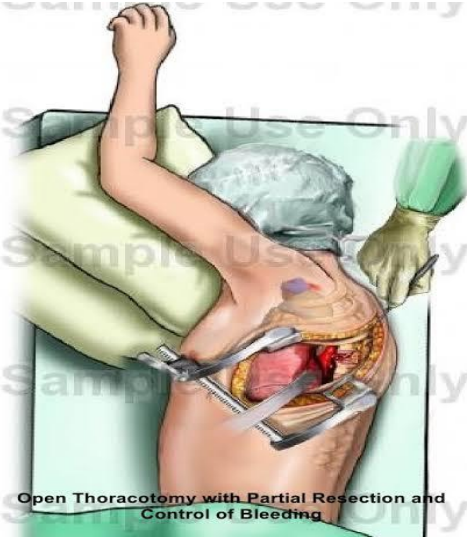
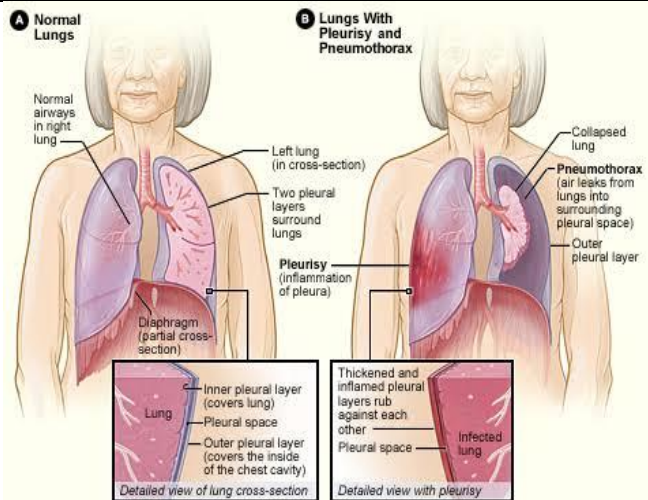
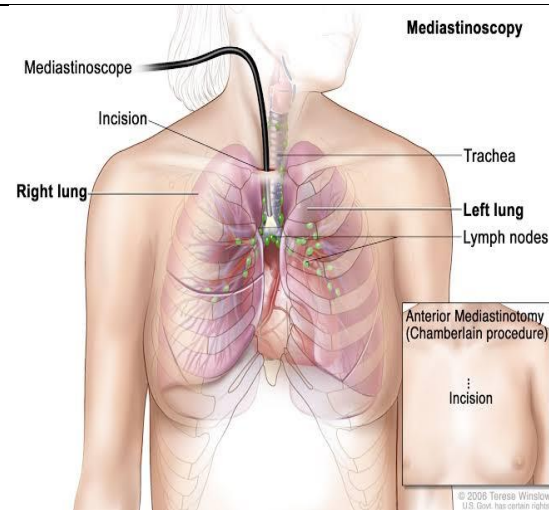
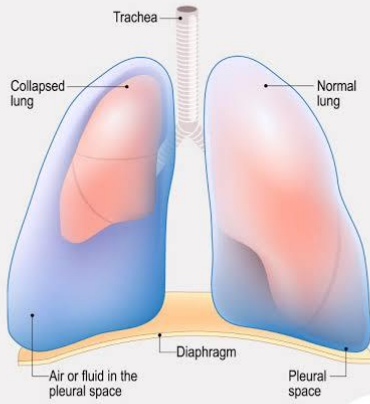


FIGURE 21-7 The lungs reside in the pleural cavities, subdivisions of the thoracic cavity. They are lined with a serous membrane called the pleura. The intrapleural space is located between the visceral and parietal pleura.



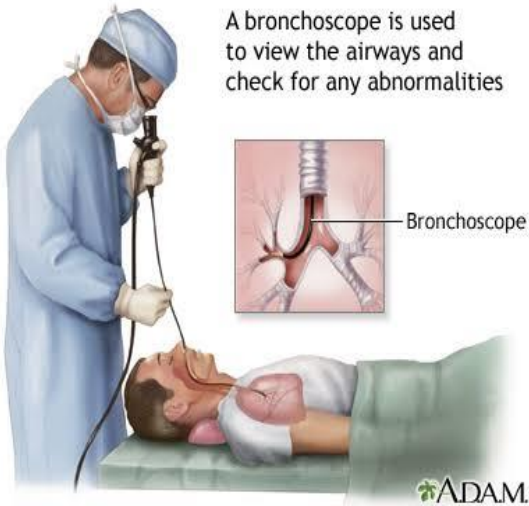
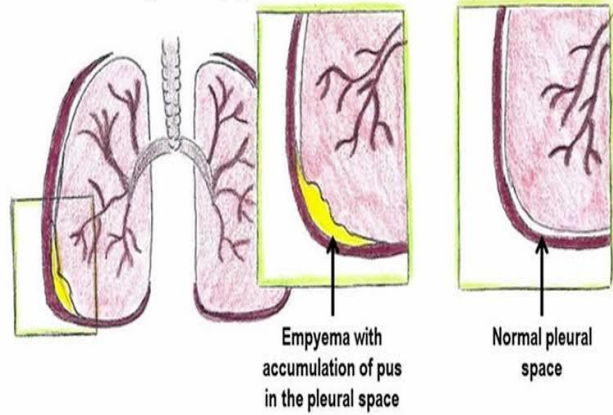
© 2005 Terese Winslow U.S. Govt. has certain rights

PNEUMOTHORAX

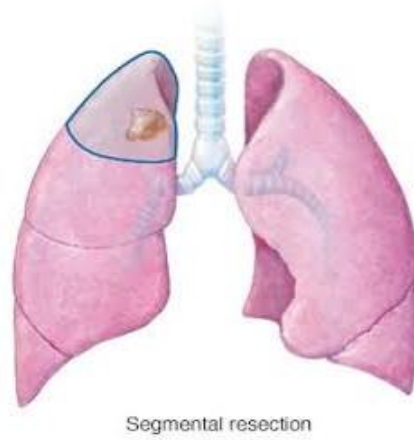


netmeds.com
India XI Pharmacy

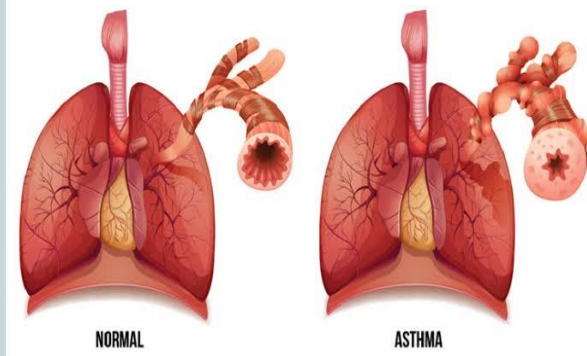
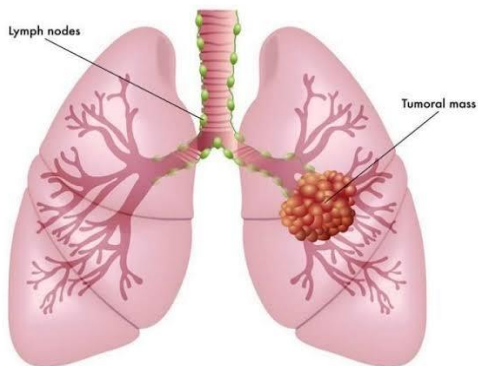
Pulmonary empyema



A bronchoscope is used to view the airways and check for any abnormalities



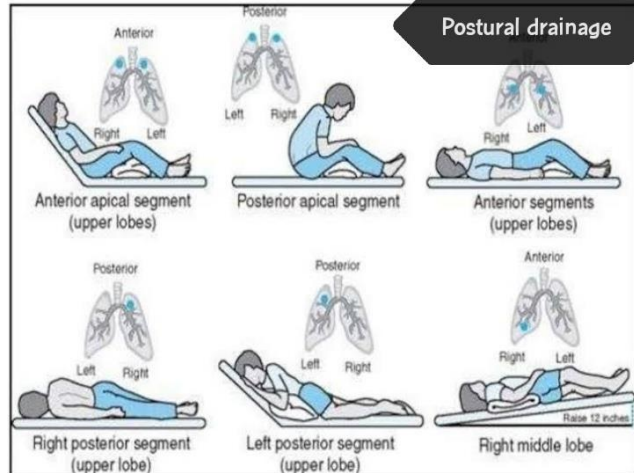
BRONCHOGENIC CARCINOMA



BRONCHIAL ASTHMA



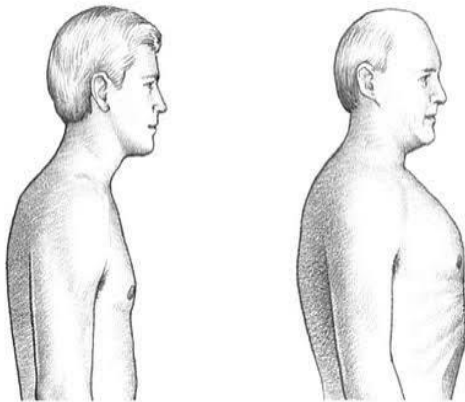
Postural drainage



NORMAL VS. BARREL CHEST

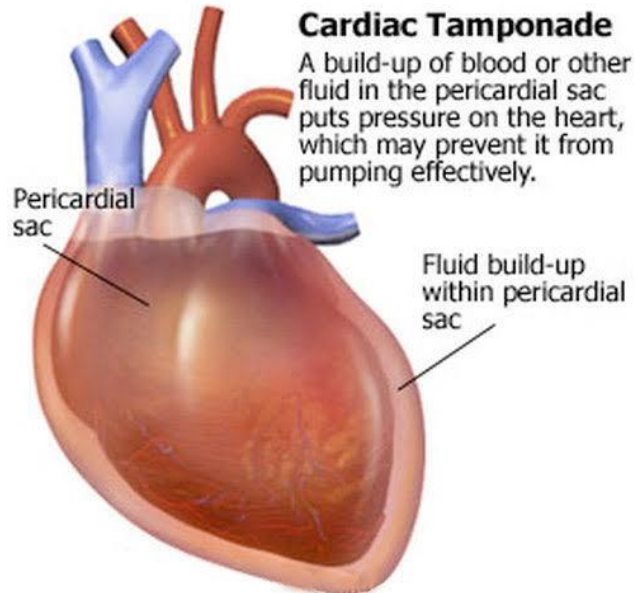
NORMAL CHEST

BARREL CHEST

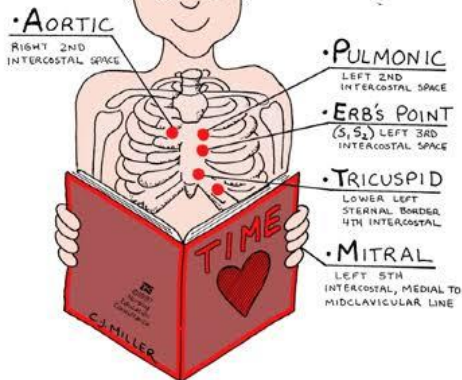


Cardiac Tamponade

A build-up of blood or other fluid in the pericardial sac puts pressure on the heart, which may prevent it from pumping effectively.



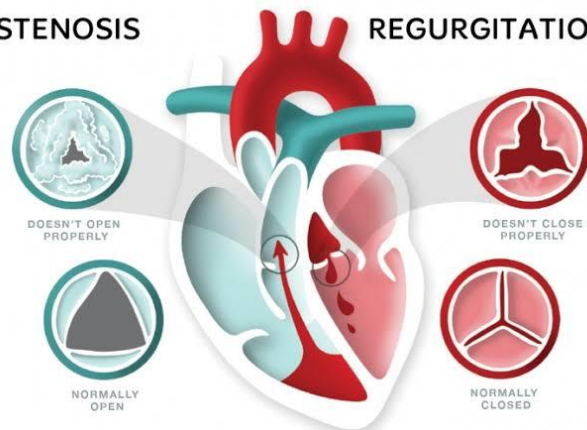
5 AREAS FOR LISTENING TO THE HEART



ALL PEOPLE ENJOY TIME MAGAZINE

STENOSIS

REGURGITATION



AORTIC ANEURYSM

