



TR-SC-14

**Model of hand showing incised wound on dorsal surface indicating Defence wound.**

**Description:**

Model of hand showing incised wound on dorsal surface indicating Defence wound.

**M.L.Importance:**

1. Defense wounds are caused to a person while warding off an attack on those parts of body which are used for defense.
2. Defense wounds indicate a homicidal attack when the victim is conscious and aware of attack.





**FM/TR/Bt-4**  
**Description:**

Model of liver showing laceration of liver  
(also called as rupture of liver)





TR-SC-24

**Model of back of head and upper torso showing two horizontal incised wounds on the back of scalp.**

**Description:**

Model of back of head and upper torso showing two horizontal incised wounds on the back of scalp.

**M.L.Importance:**

Location of wound indicate homicide. Causative weapon is heavy sharp cutting weapon like Axe.





TR-BT-08

**Model of an infant showing tearing of scalp tissue.**

**Description:**

Model of an infant showing tearing of scalp tissue, loss of skull bone and exposure of underlying brain condition called as AVULSION.

**M.L.Importance:**

Avulsion, a-type of laceration is due to grinding compression of tissues to such an extent that the skin is separated from the deeper structures. Avulsion are caused due to horizontal heavy impact.





TR-BT-07

Model of dorsum of hand showing small superficial wounds.

Description:

Model of dorsum of hand with patterned small superficial wounds indicating bite marks.

M.L.Importance:

Bite marks indicate violence



TR-BT-05

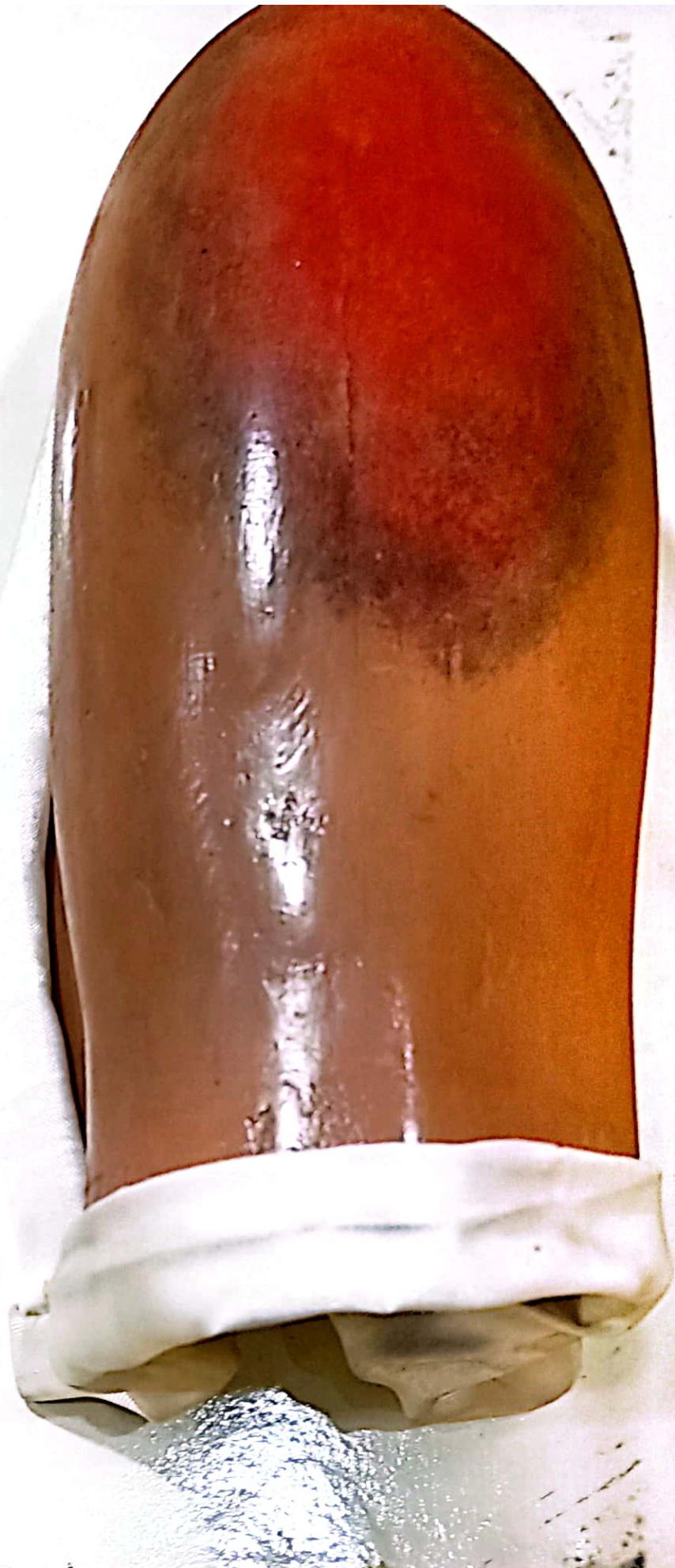
**Model of  
shoulder area  
showing bruise  
over deltoid  
muscle area.**

**Description:**

Model of the  
shoulder area  
showing bruise  
over deltoid  
muscle area.

**M.L.Importance:**

Bruising  
indicate  
application of  
blunt object on  
the effected  
area.





TR-BT-02  
**Model of posterior aspect of fore arm and hand showing multiple  
Patterned, superficial wounds.**  
**Description:** Model of posterior aspect of fore arm and hand showing  
multiple, patterned, superficial wounds surrounded by zone of bruising  
indicating bite marks.  
**M.L.Importance:** Bite marks indicate violence











**Model of face showing irregular shaped wound on fore head.**

**Info:** Model of face showing irregular shaped wound on fore head with bleeding from nose condition known as SPLIT LACERATION.

**Importance:**

1. Laceration indicates hit by a hard blunt object
2. Split laceration is caused due to crushing of skin between two hard objects viz underlying bone and blunt object.
3. Bleeding from nose and mouth indicate.
  - a. Fracture of anterior cranial fosse (if accompanied by C.S.F)
  - b. Any internal injury to tissues of naso pharynx or chest.



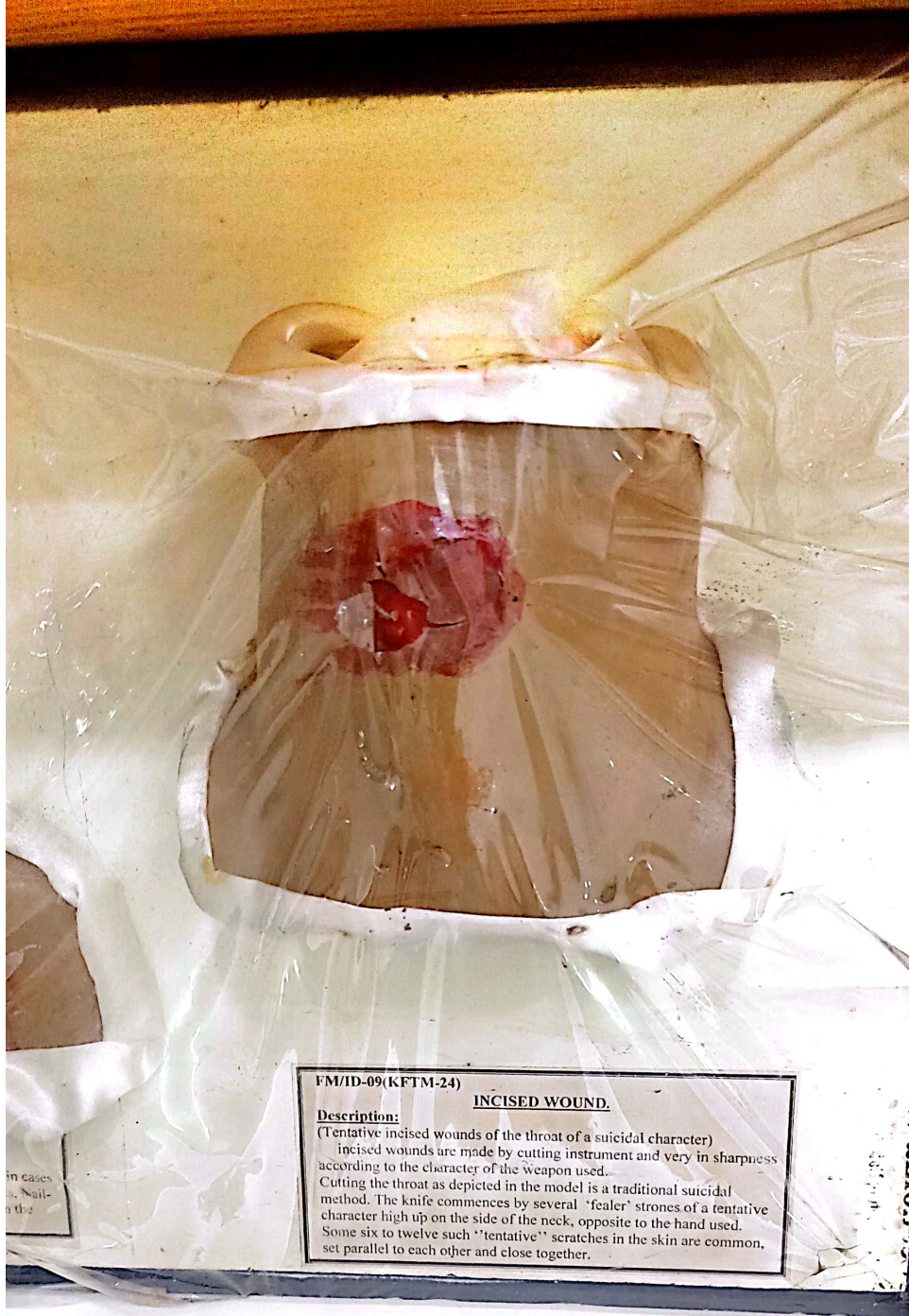


IR-SC-05  
**Model of face and neck showing multiple horizontal cuts and cut throat**  
**Description:** Model of face and neck showing multiple horizontal cuts on neck condition known as CUT THROAT.  
**M.I. Importance:** The Number (three), direction (horizontal) & location of wounds (one above the others) are suggestive of HOMICIDE.









FM/ID-09(KFTM-24)

**INCISED WOUND.**

**Description:**

(Tentative incised wounds of the throat of a suicidal character)  
incised wounds are made by cutting instrument and very in sharpness according to the character of the weapon used.  
Cutting the throat as depicted in the model is a traditional suicidal method. The knife commences by several 'feeler' strokes of a tentative character high up on the side of the neck, opposite to the hand used. Some six to twelve such "tentative" scratches in the skin are common, set parallel to each other and close together.

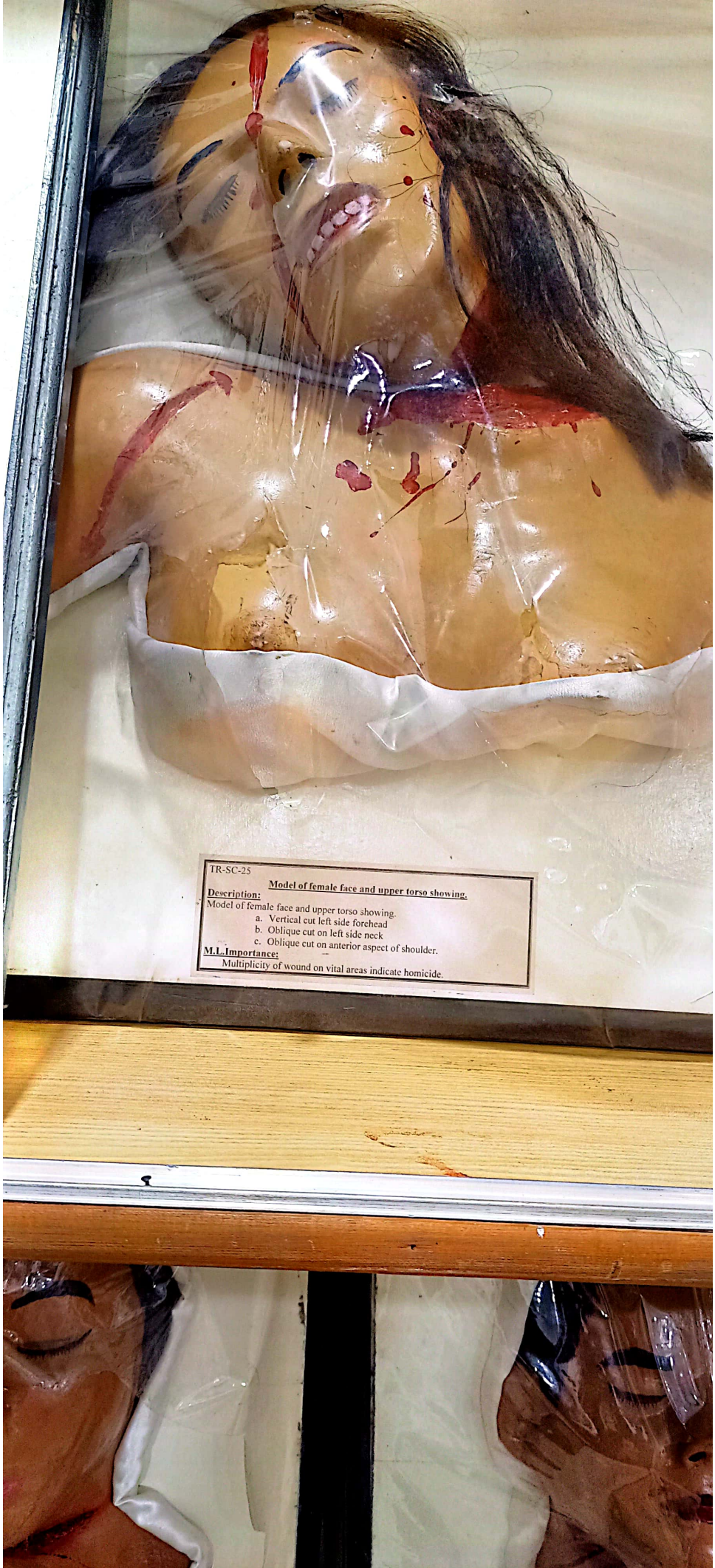




KFM/IRSC-4

Description: Model of face & upper torso of a young female showing multiple scratches (abrasions) on face, upper chest and breasts





TR-SC-25      **Model of female face and upper torso showing.**  
**Description:**  
Model of female face and upper torso showing.  
a. Vertical cut left side forehead  
b. Oblique cut on left side neck  
c. Oblique cut on anterior aspect of shoulder.  
**M.I. Importance:**  
Multiplicity of wound on vital areas indicate homicide.





TR-BT-09

**Model of face showing bruising around the left eye**

**Description:**

Model of face showing bruising around the left eye-condition called as black eye.

**M.L.Importance:**

Bruise around the eye may be caused as a result of.

- a). Local trauma
- b). Trauma over forehead with trickling of blood along with tissue space due to gravity called as gravity shifting of bruise or ECTOPIC BRUISE.



TR-SC-18

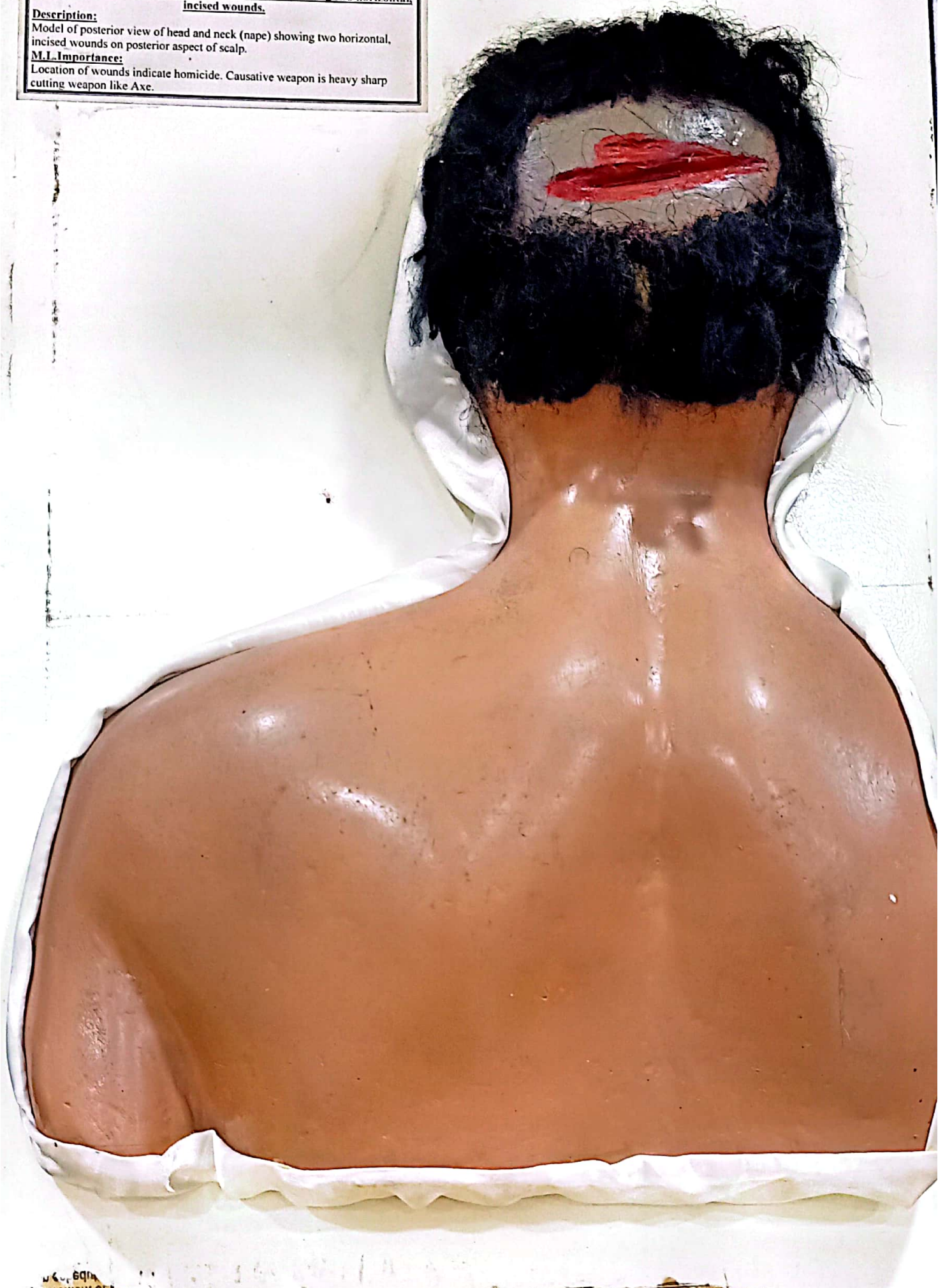
**Model of posterior view of head and neck (nape) showing two horizontal incised wounds.**

**Description:**

Model of posterior view of head and neck (nape) showing two horizontal, incised wounds on posterior aspect of scalp.

**M.I. Importance:**

Location of wounds indicate homicide. Causative weapon is heavy sharp cutting weapon like Axe.







FM/IRN ID-10

**TRAIN ACCIDENTAL HEAD.**

Model of female face showing multiple horizontal full cut on neck condition known as head cut by train accident.





IR-SC-11  
Model of face showing multiple deep cuts on neck and face.  
Description: Model of face showing multiple deep cuts on lateral and posterior surface of neck and face.  
M.L. Impression: Indicate homicide with a heavy sharp cutting weapon like Axe, Hatchet, Chopper, Gandasa etc.





FM/AS-1

MAN      STRANGULATION

**Description:**

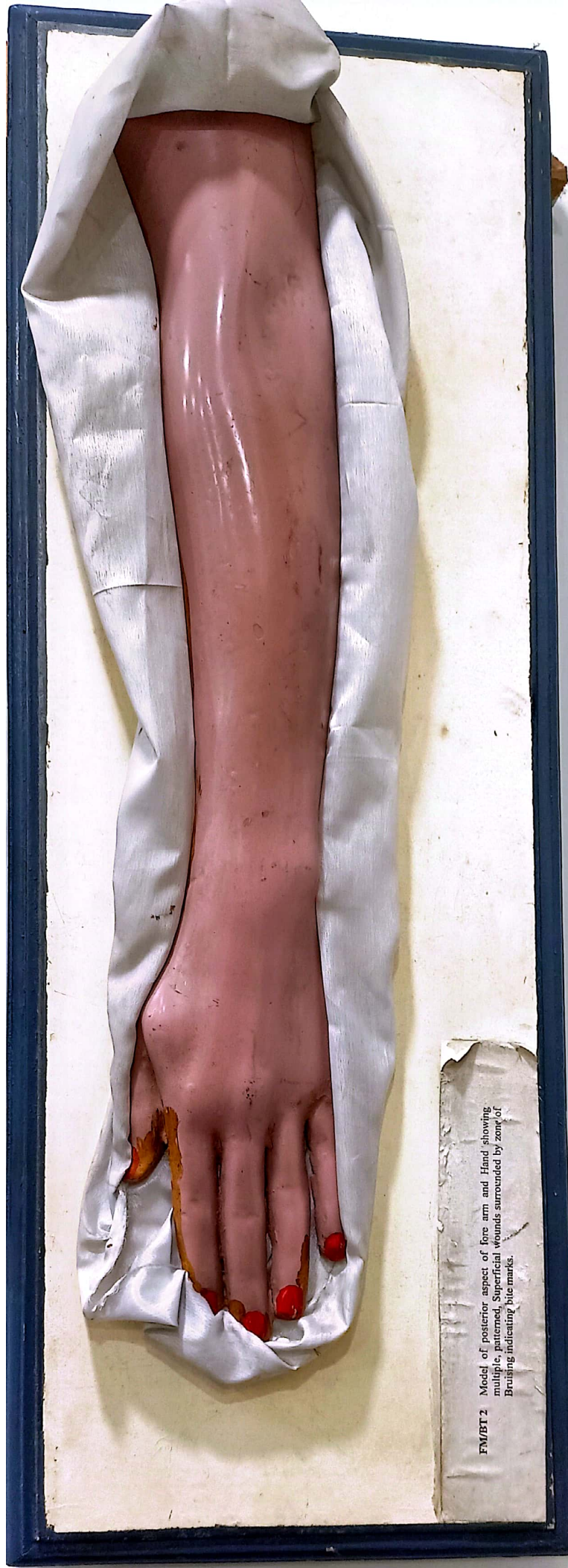
Manual strangulation is a very common form of assault, often seen in cases of infanticide. Bruises from the fingers, scratches and characteristics, Nail-marks may be found on the neck both in front and behind as seen in the model.





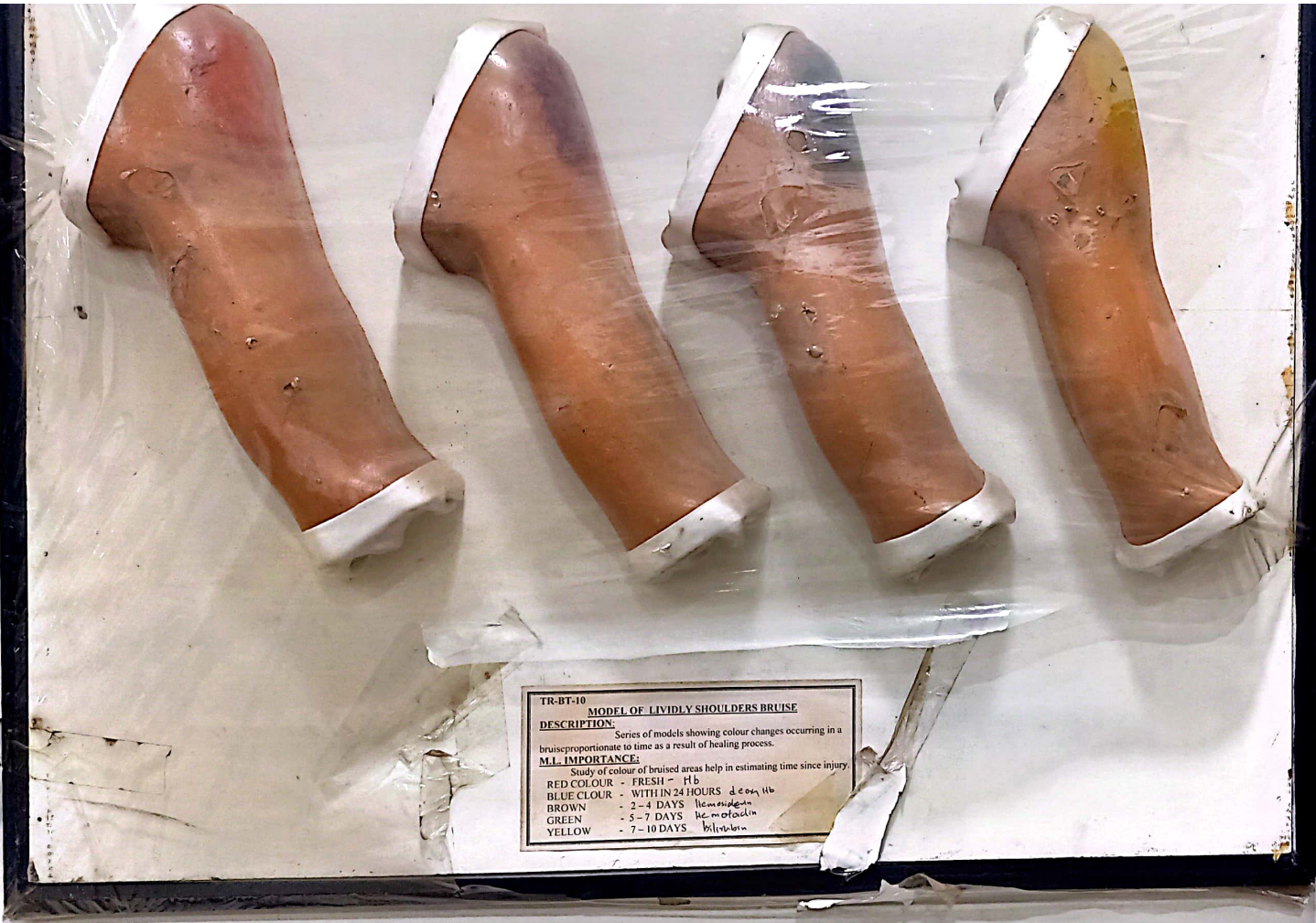
TR-SC-03  
Model of face & Neck showing multiple incised wounds on face and neck.  
**Description:**  
Model of face & Neck showing multiple incised wounds on face and neck.  
**M.L.Importance:**  
Multiplicity and location of wounds indicate homicide with sharp cutting object.





FM/BT 2 Model of posterior aspect of fore arm and Hand showing multiple, patterned, superficial wounds surrounded by zone of Bruising indicating bite marks.





**TR-BT-10** MODEL OF LIVIDLY SHOULDERS BRUISE  
**DESCRIPTION:** Series of models showing colour changes occurring in a bruise proportionate to time as a result of healing process.  
**MLL IMPORTANCE:** Study of colour of bruised areas help in estimating time since injury.  
RED COLOUR - FRESH - Hb  
BLUE COLOUR - WITH IN 24 HOURS deoxy Hb  
BROWN - 2-4 DAYS Hemosiderin  
GREEN - 5-7 DAYS Biliverdin  
YELLOW - 7-10 DAYS Biliverdin



of fore arm and Hand showing  
of wounds surrounded by zone of  
red.



TR-SC-23

**Model of back of head and upper torso showing exit of a perforated wound on right side chest.**

**Description:**

Model of back of head and upper torso showing exit of a perforated wound on right side chest.

**M.L. Importance:**

When a sharp pointed weapon after penetrating the tissues, comes out from the opposite side, making an exit wound, injury is termed as perforating wound. Usually seen over chest cavity.

Seen from side.







TR-SC-04  
**Model of face & upper torso of multiple scratches on face, upper chest and breasts.**  
**Description:** Model of face & upper torso of a young female showing multiple scratches (abrasions) on face, upper chest and breasts.  
**M.L.Importance:**  
The distribution of injuries indicate  
1. Probably sexual assault with non-consenting victim  
2. Sadist Assailant Examination of female genitalia and Collection of appropriate specimen is necessary in such cases.

KSDI





TR-SC-07

Model of

Wounds, Terminal

**Description:**

Model of anterior abd.  
wounds slightly deeper at their commencement  
called as tailing of wound.

**M.L. Importance:**

1. Depth at commencement and tailing at the end indicate direction (from above down wards ) of force.
2. Superficial wounds indicate self infliction rather than assault.





TR-BT-03

**Model of face of child showing tearing of a portion of scalp.**

**Description:**

Model of face of child showing tearing of a portion of scalp and exposure of underlying bone condition known as **STRETCH LACERATION**

**M.L.Importance:**

Stretch laceration indicate tangential impact of blunt force on the effected area.



TR-SC-12

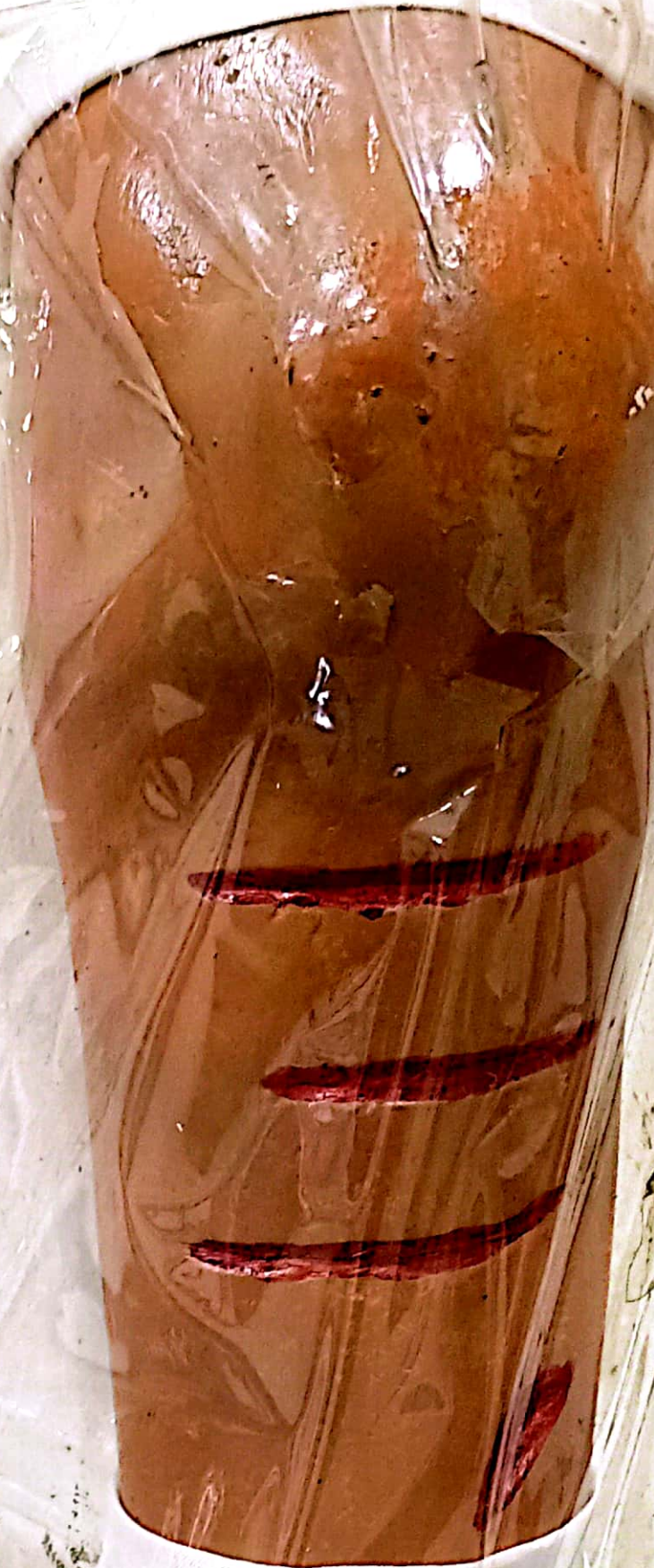
**Model of a  
portion of leg  
below knee joint  
showing multiple  
wounds.**

**Description:**

Model of a  
portion of leg  
below knee joint  
showing  
multiple incised  
wounds  
horizontal and  
oblique in  
direction.

**M.L.Importance:**

Wounds indicate  
assault.







TR-SC-2

Model of Face Showing Multiple Deep Incised  
Wounds On Forehead, Left Face & Neck.

DESCRIPTION:

Model of face showing multiple deep incised wounds on forehead, left face and neck. Additionally, there is a black mole on the left side of the face.

M.I. IMPORTANCE:

Multiple deep incised wounds indicate Homicide.  
Causative Weapon: Heavy sharp cutting object. Mole is a mark of identity.





TR-SC-20(a,b,c,d,e)  
**Models of posterior aspect of upper arm above elbow showing healing process.**  
**Description:**  
Model of posterior aspect of upper arm above elbow showing healing process of an non stitched, non infected, incised wound.  
Model "e" showing cicatrisation, of wound (scar formation)  
**M.I. Importance:**  
Scar indicates.  
a. Type of causative weapon  
b. Time since injury  
c. A permanent mark of identification of a person.



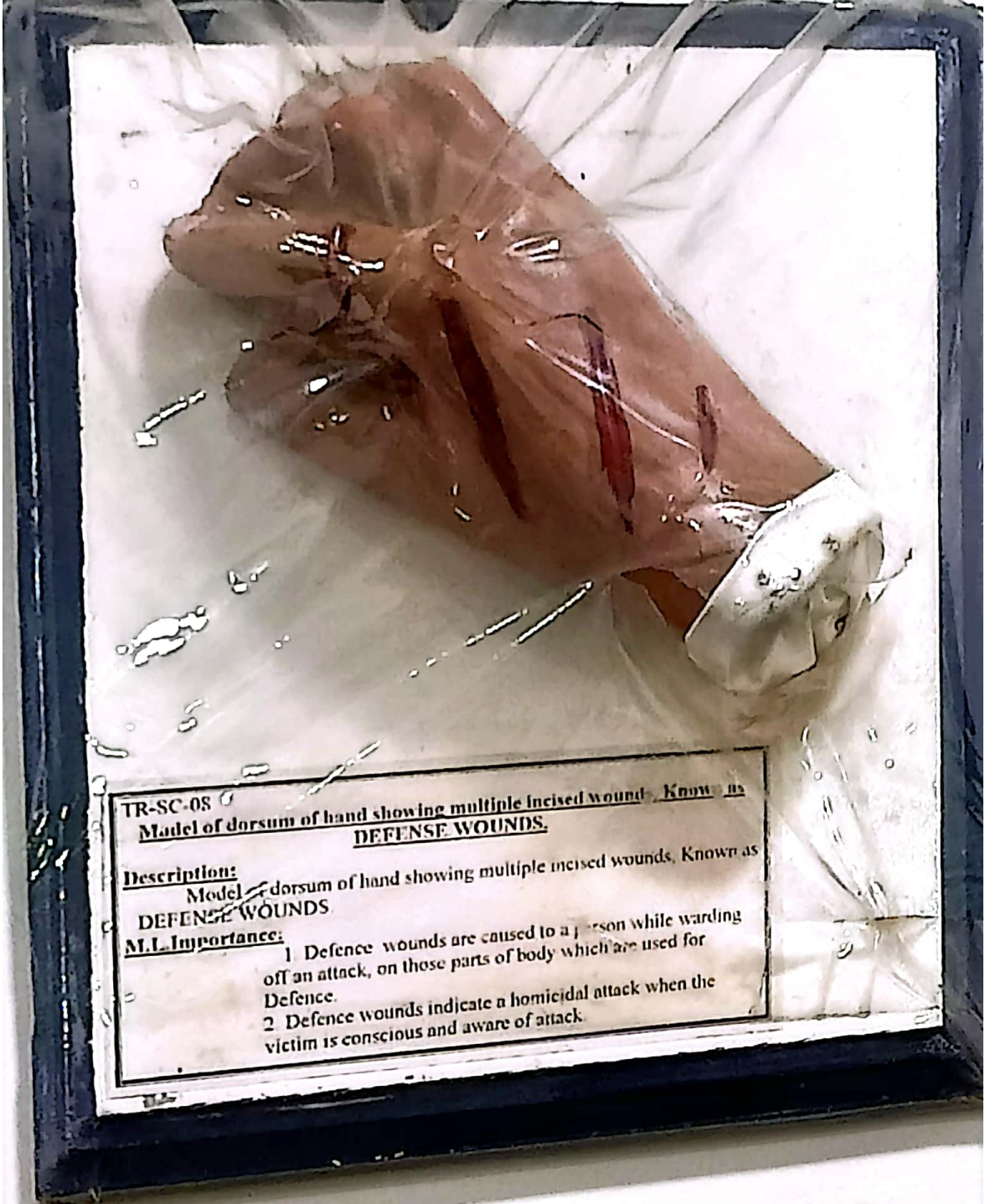


**TR-SC-16**  
**Model of posterior aspect of fore arm showing multiple superficial incised wound.**

**Description:**  
Model of posterior aspect of fore arm showing multiple superficial incised wound.

**M.I. Importance:**  
Wounds (a) multiple (b) superficial (c) on accessible and (d) non vital areas of body indicate self inflection ( **FABRICATED WOUNDS**).





TR-SC-08  
Model of dorsum of hand showing multiple incised wound, Known as DEFENSE WOUNDS.

Description:  
Model of dorsum of hand showing multiple incised wounds, Known as DEFENSE WOUNDS

M.L. Importance:

- 1 Defence wounds are caused to a person while warding off an attack, on those parts of body which are used for Defence.
- 2 Defence wounds indicate a homicidal attack when the victim is conscious and aware of attack.

# TRAUMATOLOGY



TR-SC-21

Model of upper torso of a female showing multiple cuts.

**Description:**

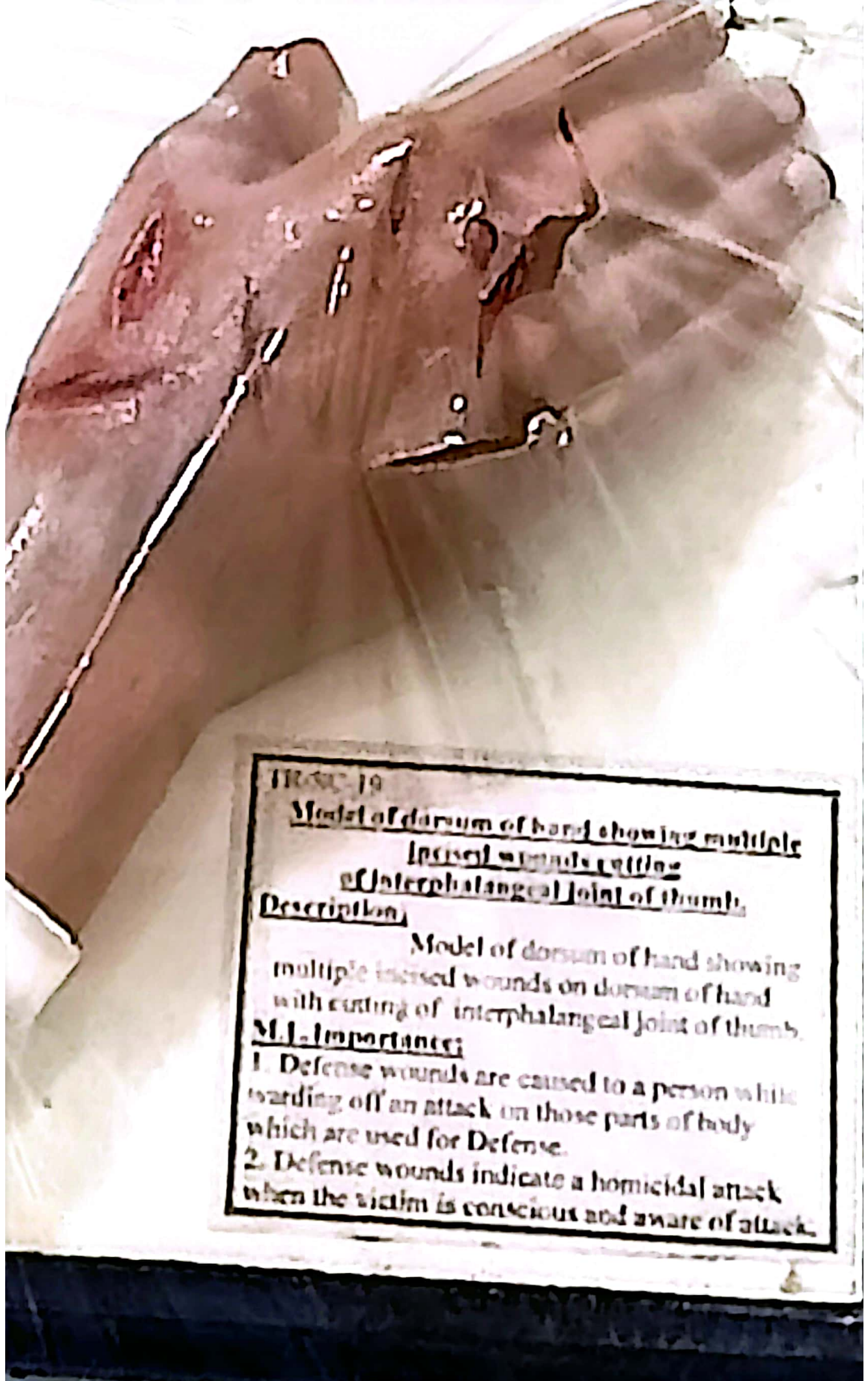
Model of face and upper torso of a female showing multiple cuts on posterior - lateral aspect of right side neck.

**M.L. Importance:**

Indicate homicide with a heavy sharp cutting weapon like Axe, Hatchet, Chopper, Gandasa etc.







TR-50-19

Model of dorsum of hand showing multiple  
incised wounds cutting  
of interphalangeal joint of thumb.

Description:

Model of dorsum of hand showing multiple incised wounds on dorsum of hand with cutting of interphalangeal joint of thumb.

M.I. Importance:

1. Defense wounds are caused to a person while warding off an attack on those parts of body which are used for Defense.
2. Defense wounds indicate a homicidal attack when the victim is conscious and aware of attack.