

Age related cataract

Dr Muhammad zia ud din Khalil

Assistant professor KGMC

FCPS(OPHTHALMOLOGY),FCPS(VITREORETINA),FRCS(GLASGOW),
FICO(UK),FELLOWSHIP IN VITREO-RETINA(GERMANY),MRCS(EDINGBURGH)

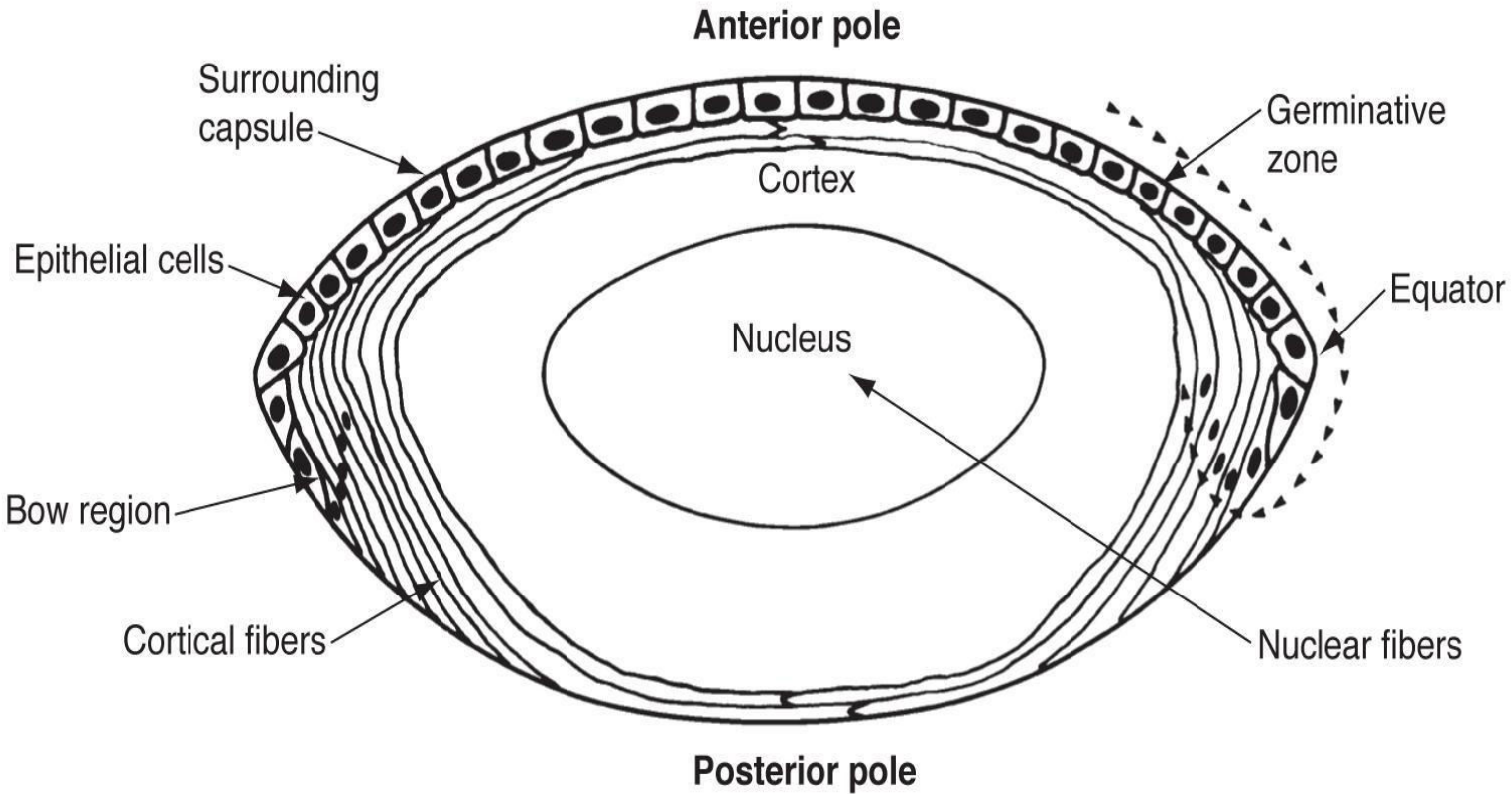


Age related cataract

- Cataract is defined as opacification of the lens
- Age related cataract occurs in old age.



Anatomy of lens



Types of contract

- morphological classification
- Classification according to maturity



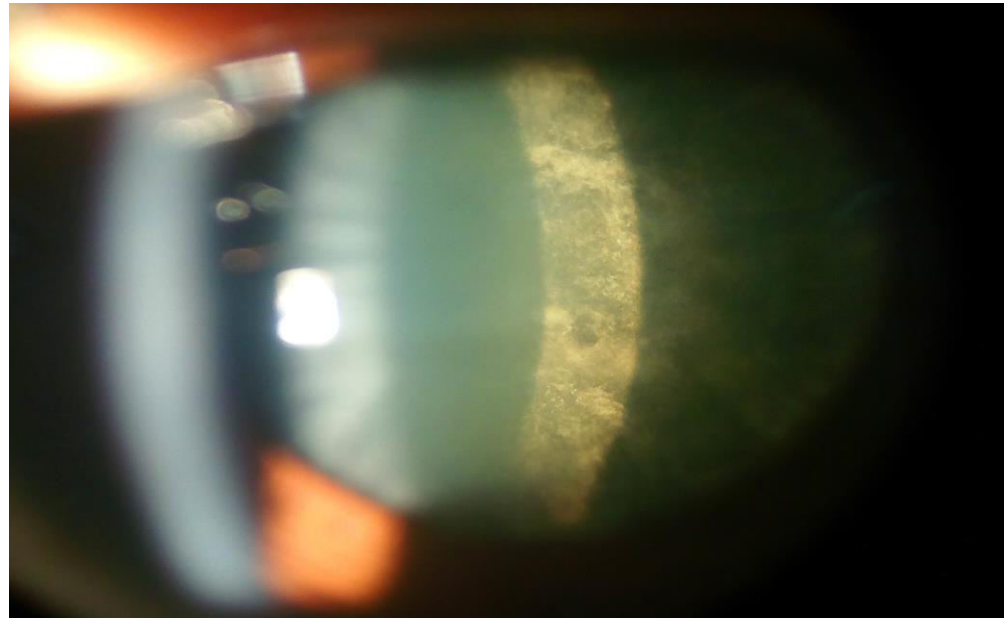
Morphological classification

Morphological classification

- *Subcapsular cataract*
 - *Anterior subcapsular cataract*
 - *Posterior subcapsular cataract*
- *Nuclear cataract* involves the nucleus of lens.
 - Yellow to brown coloration
- *Cortical cataract*
 - wedge shaped or radial spoke-like opacities.
- *Polar cataract*



Types of cataract

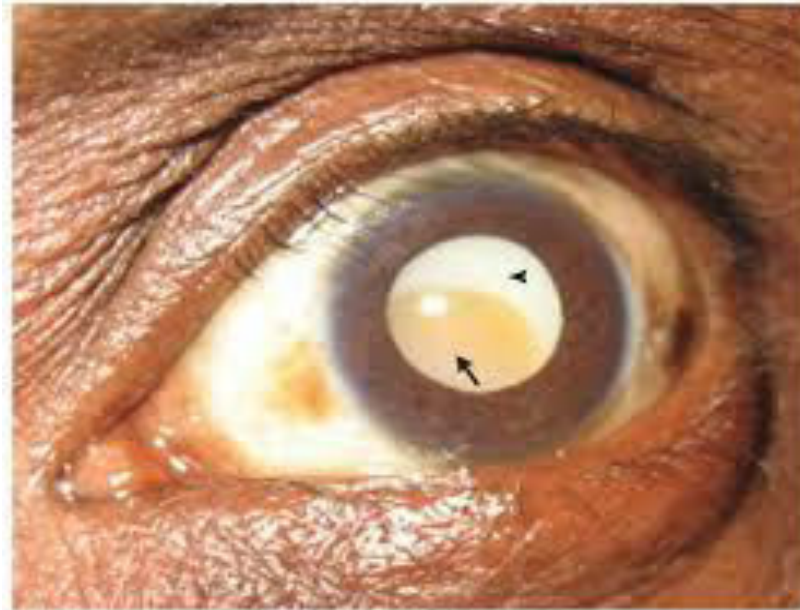


Classification according to maturity

- Early cataract
- Mature cataract
- Hypermature cataract
- Morgagnian cataract



Types of cataract



Symptoms of cataract

- Decreases vision
- Near vision changes
- Changes in vision according to light intensity

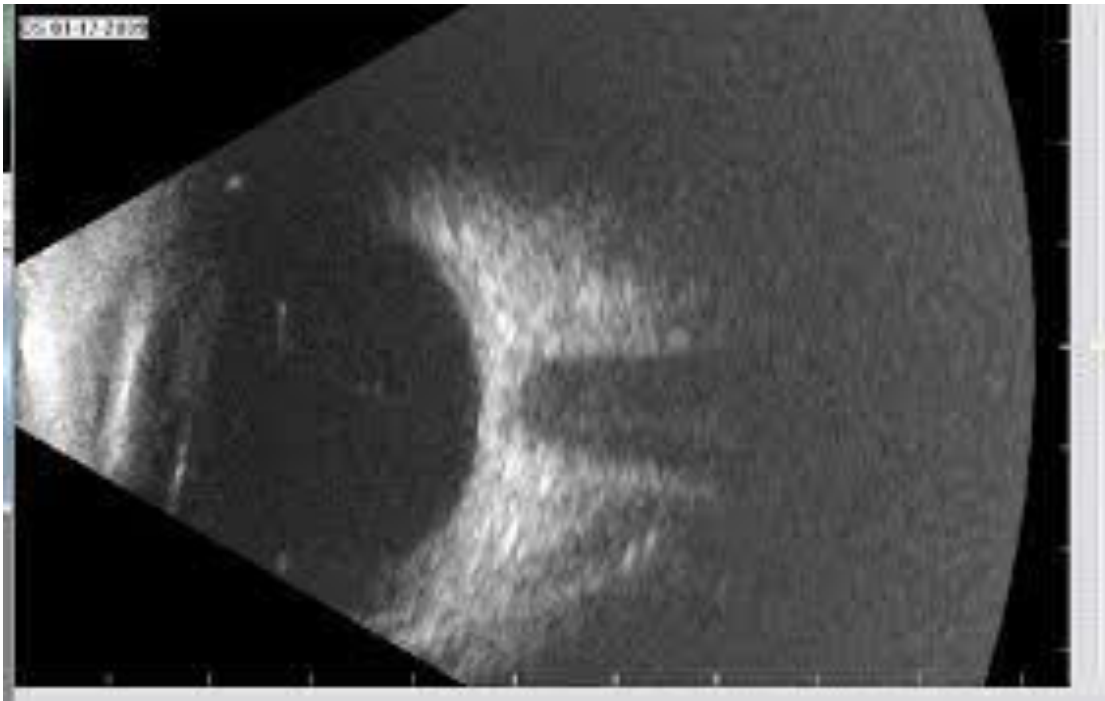


Management of cataract

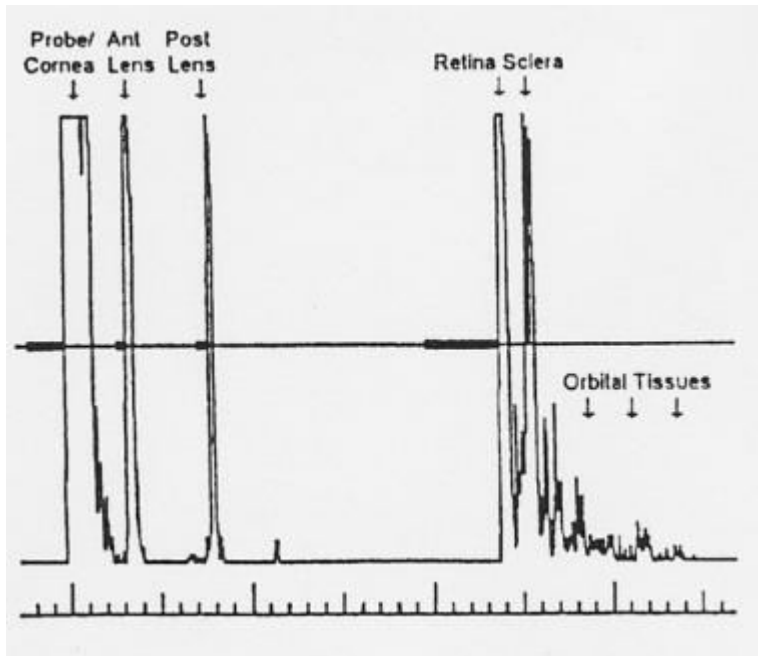
- Investigations , viral profile, blood chemistry,
- Ocular investigations
- Biometry
- B-scan
- Cataract surgery



B-scan



Biometry



OD right		AL: 23.63 mm (SNR = 220.1) K1: 42.45 D / 7.95 mm @ 12° K2: 45.79 D / 7.37 mm @ 102° R / SE: 7.66 mm / 44.12 D Cyl: 3.34 D @ 102° ACD: 4.32 mm		OS left		AL: 23.67 mm (SNR = 59.1) K1: 42.94 D / 7.86 mm @ 172° K2: 46.04 D / 7.33 mm @ 82° R / SE: 7.60 mm / 44.49 D Cyl: 3.10 D @ 82° ACD: 4.43 mm	
Status: Phakic		Status: Phakic		Status: Phakic		Status: Phakic	
SA60D3		Alcon ACIOL		SA60D3		Alcon ACIOL	
SF: 1.28		SF: -0.31		SF: 1.28		SF: -0.31	
TOL (D)	REF (D)	TOL (D)	REF (D)	TOL (D)	REF (D)	TOL (D)	REF (D)
20.5	-0.90	18.0	-1.06	20.0	-0.95	17.5	-1.06
20.0	-0.55	17.5	-0.65	19.5	-0.60	17.0	-0.66
19.5	-0.20	17.0	-0.26	19.0	-0.25	16.5	-0.27
19.0	0.15	16.5	0.13	18.5	0.10	16.0	0.12
18.5	0.49	16.0	0.52	18.0	0.44	15.5	0.51
18.0	0.83	15.5	0.90	17.5	0.77	15.0	0.89
17.5	1.17	15.0	1.28	17.0	1.11	14.5	1.26
Emme. IOL: 19.22		Emme. IOL: 16.67		Emme. IOL: 18.64		Emme. IOL: 16.16	
Alcon MA50 & MA60		Alcon SN60WF		Alcon MA50 & MA60		Alcon SN60WF	
SF: 1.73		SF: 1.85		SF: 1.73		SF: 1.85	
TOL (D)	REF (D)	TOL (D)	REF (D)	TOL (D)	REF (D)	TOL (D)	REF (D)
21.5	-0.99	22.0	-1.17	21.0	-1.05	21.0	-0.89
21.0	-0.65	21.5	-0.83	20.5	-0.71	20.5	-0.55
20.5	-0.31	21.0	-0.49	20.0	-0.37	20.0	-0.22
20.0	0.03	20.5	-0.15	19.5	-0.04	19.5	0.11
19.5	0.36	20.0	0.18	19.0	0.29	19.0	0.44
19.0	0.69	19.5	0.51	18.5	0.62	18.5	0.76
18.5	1.01	19.0	0.83	18.0	0.94	18.0	1.08
Emme. IOL: 20.04		Emme. IOL: 20.27		Emme. IOL: 19.45		Emme. IOL: 19.67	



Complications of cataract

- Glaucoma
 - I. Phacomorphic glaucoma
 - II. Phacolytic glaucoma
 - III. Phacoantigenic
- Subluxation
- Luxation

