



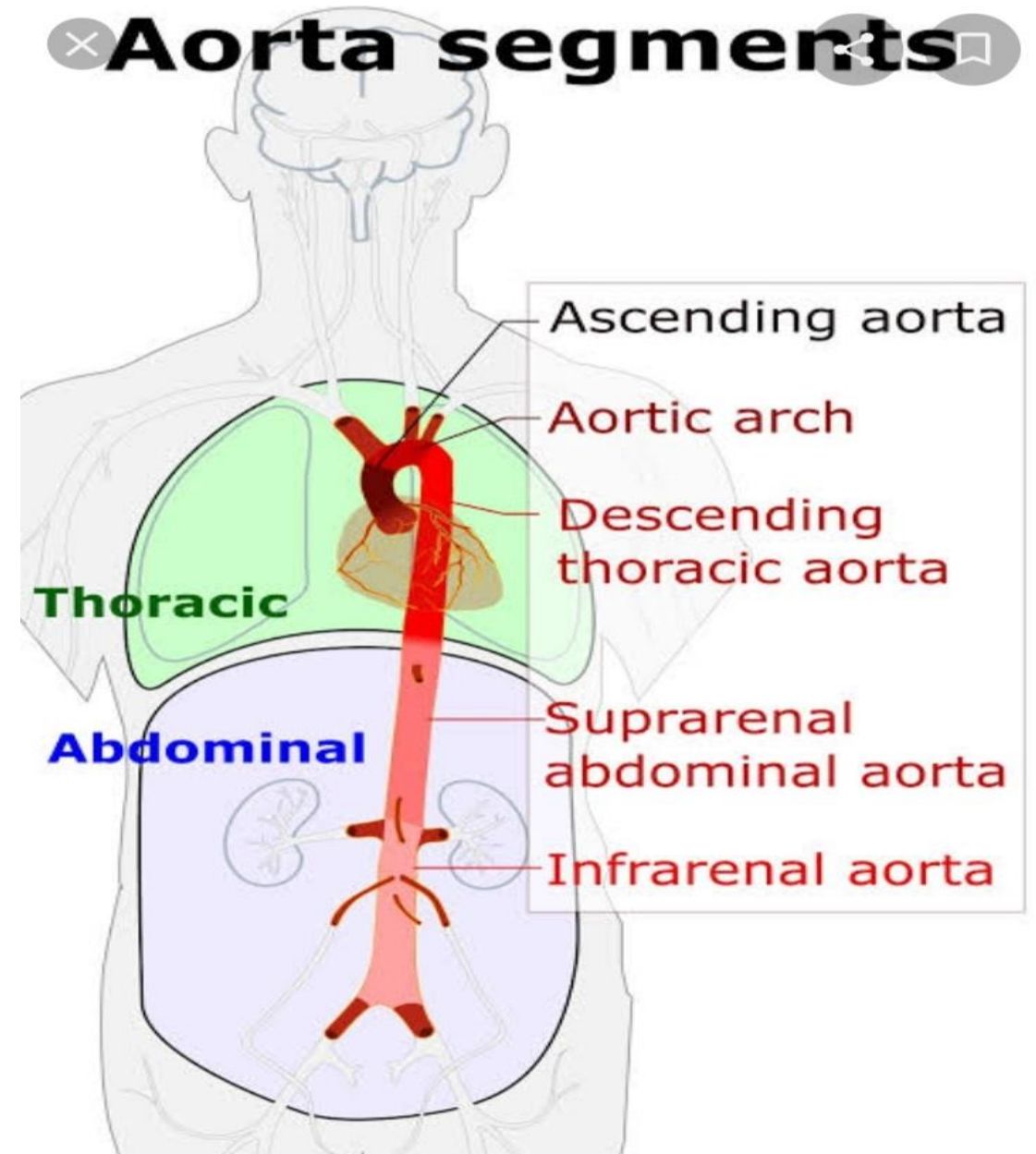
بِسْمِ اللَّهِ الرَّحْمَنِ الرَّحِيمِ

ABDOMINAL AORTA

Sakina Rehman
Roll number 127
2nd Year

Abdominal Aorta

- It is the continuation of descending thoracic aorta
- It enters the abdomen to the aortic opening of the diaphragm
- **Begins at T12**
- **End at the level of L4**



FACTS

- Front of the body of T12 vertebra
- Median Arcuate ligament –Aortic hiatus
- Behind Peritoneum ,slightly to left
- Left ; Sympathetic trunk
- Right ; IVC , Cysterna chyli, Beginning of Azygous Vein

ABDOMINAL AORTA

BRANCHES

ANTERIOR OR VENTRAL

1. COELIAC • unpaired

2. SUP. MES. A. •

3. INF. MES. A. •

LATERAL

1. INF. PHRENIC A. Paired

2. MIDDLE SUPRA-RENAL

3. RENAL

4. TESTICULAR OR OVARIAN

POSTERIOR

1. LUMBAR (4 PAIRED)

2. MEDIAN SACRAL Unpaired

TERMINAL

COMMON ILIAC A.

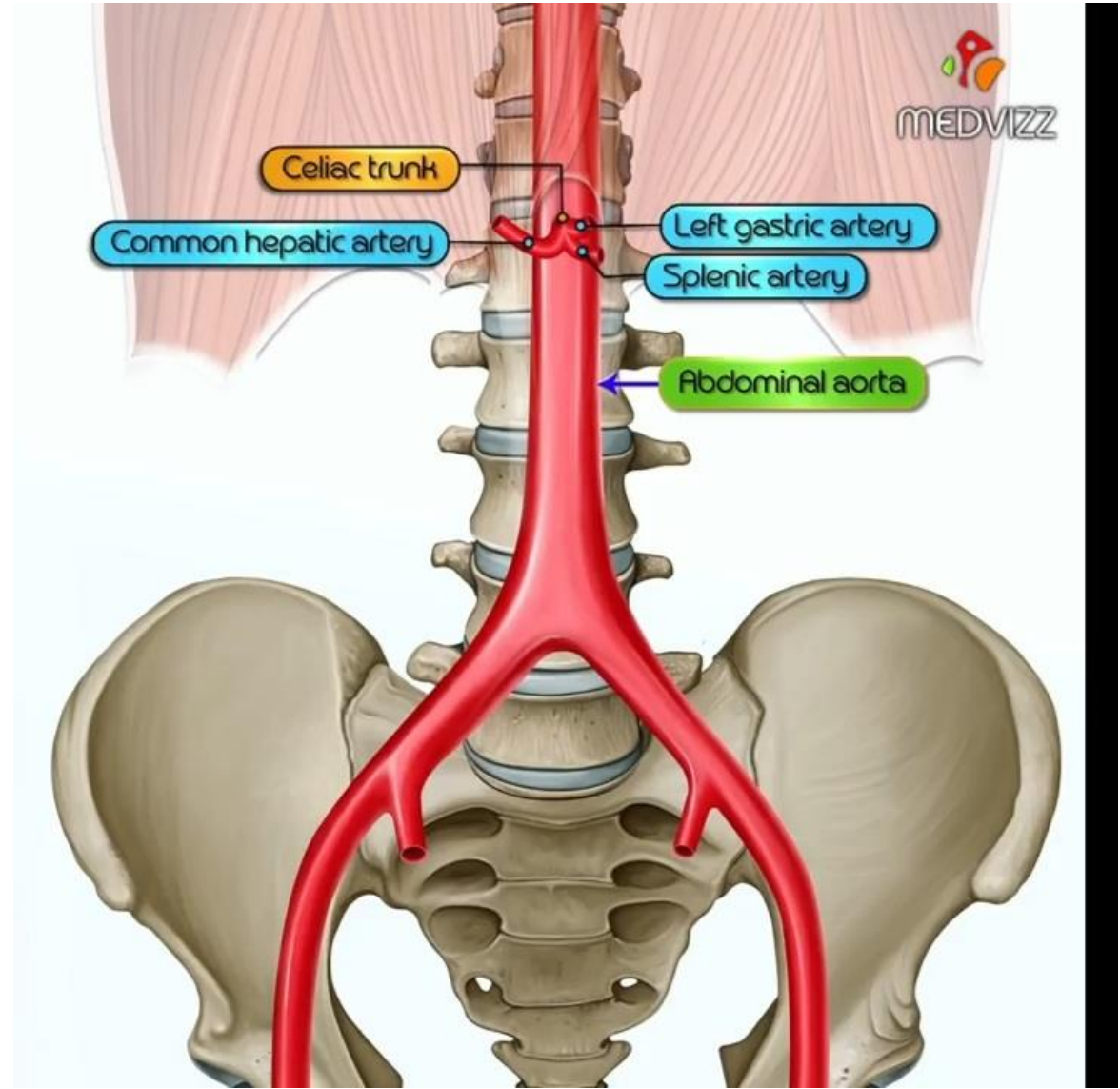
EXTERNAL I. A. •

INTERNAL I. A. •

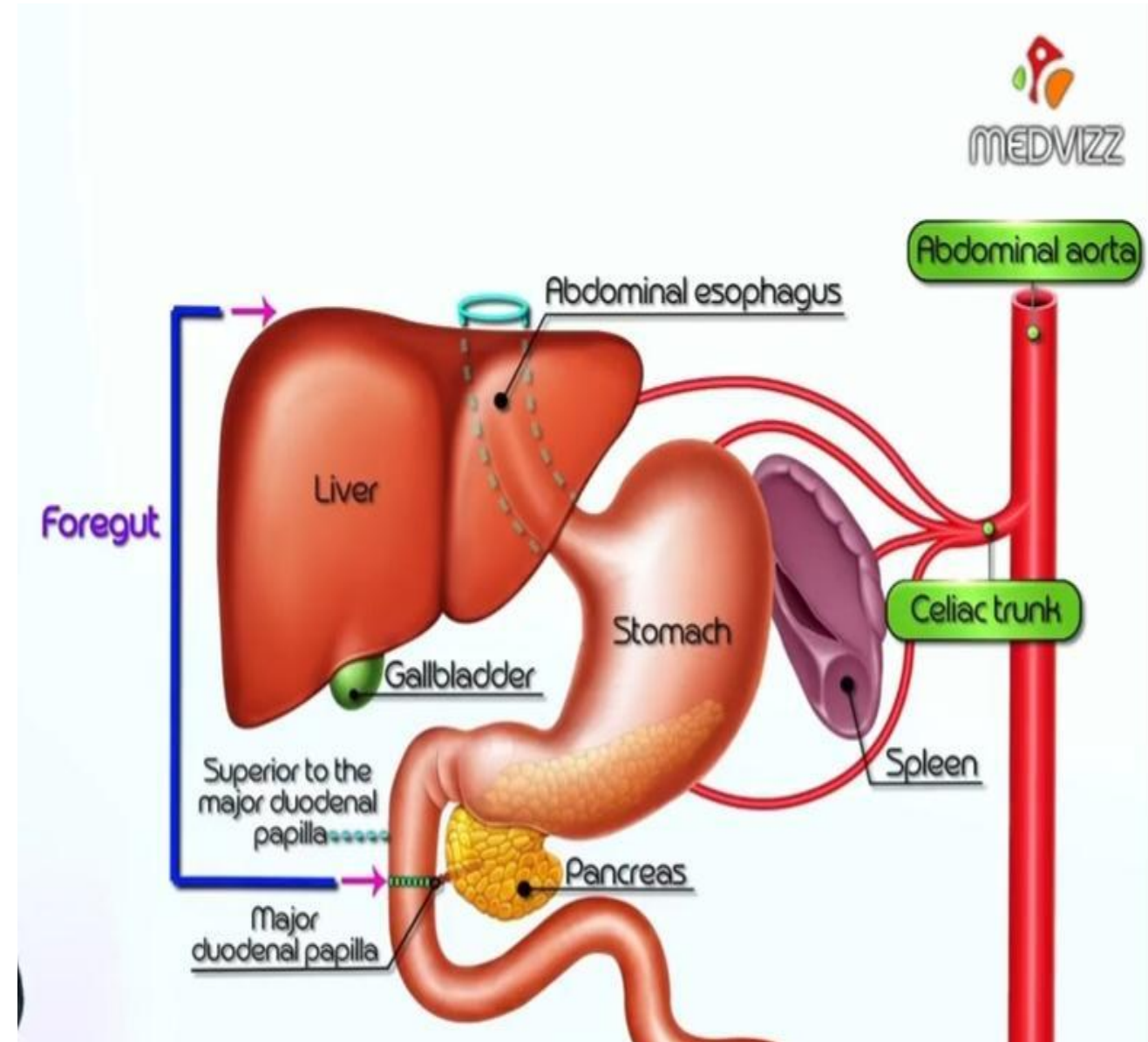
Celiac Trunk

Origin : Anterior to the upper part of the vertebral body L1

- Divided into three important branches
 1. Left gastric artery
 2. Splenic artery
 3. Common hepatic artery

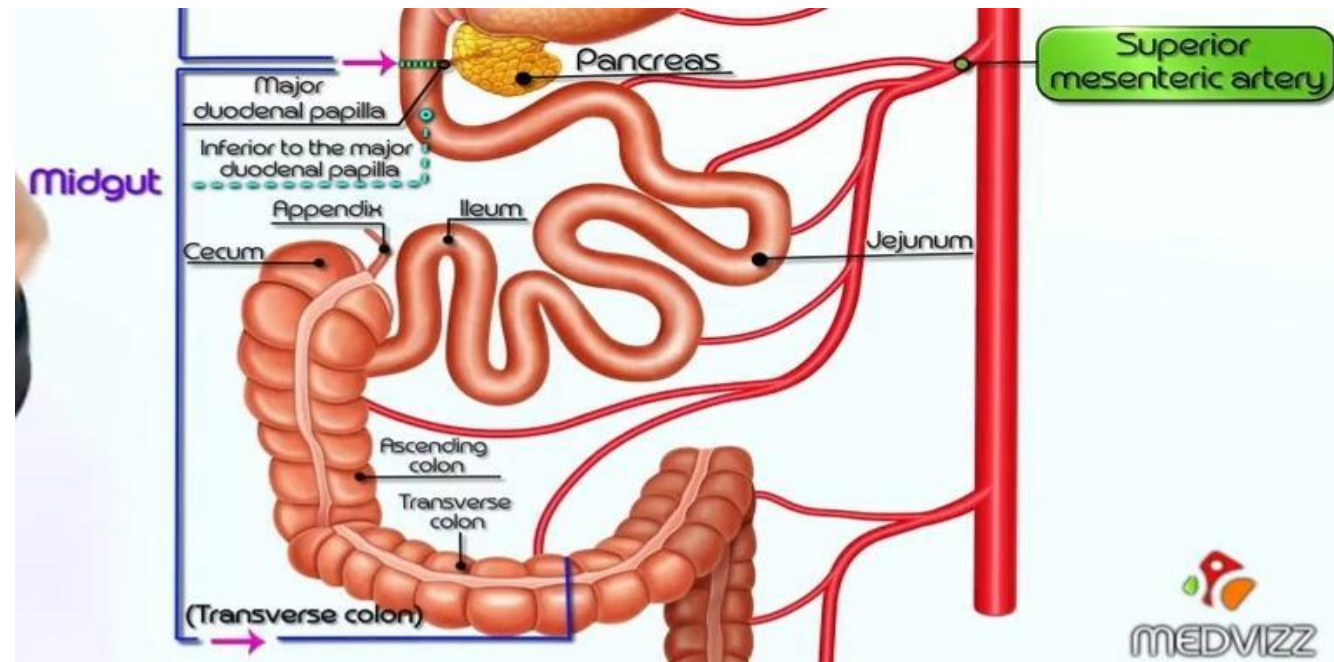
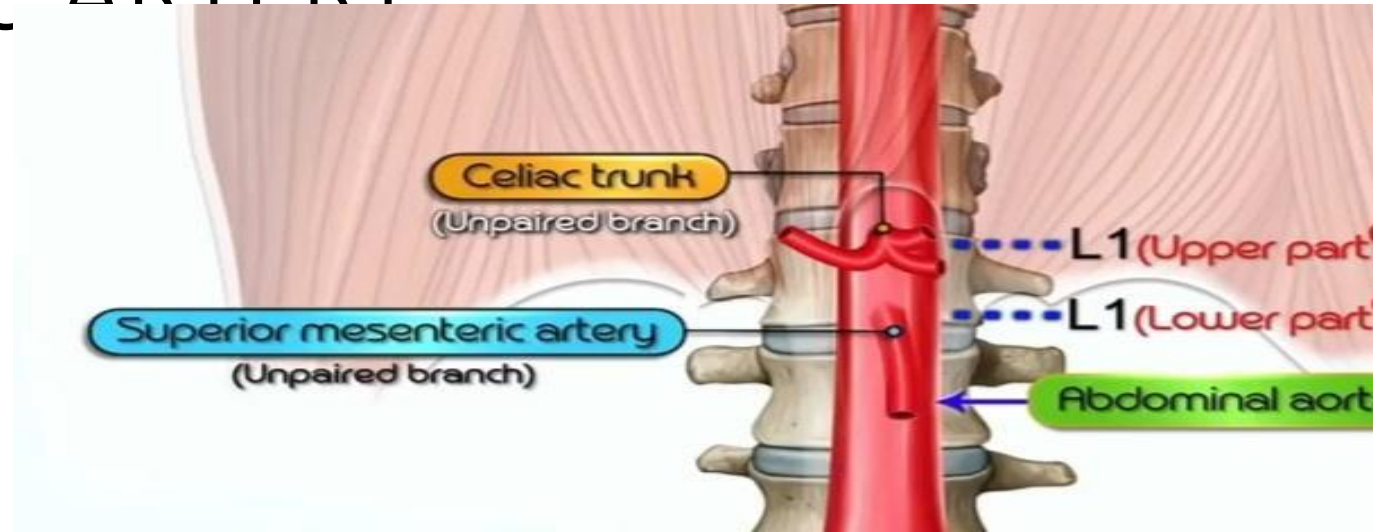


- Celiac trunk supplies the FOREGUT
- Foregut structure includes:
 1. Abdominal part of the esophagus
 2. Stomach
 3. Duodenum
 4. Liver
 5. Pancreas
 6. Gall bladder
 7. Spleen



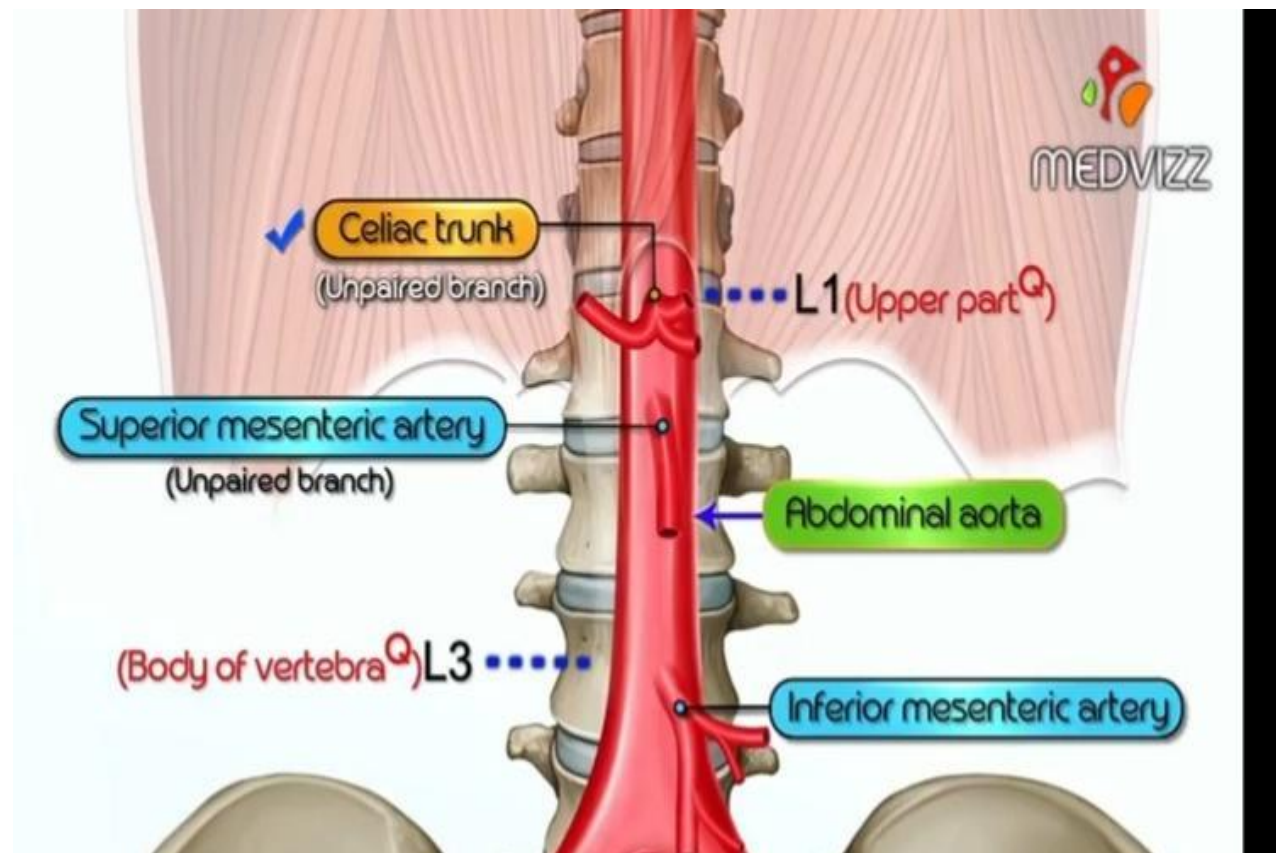
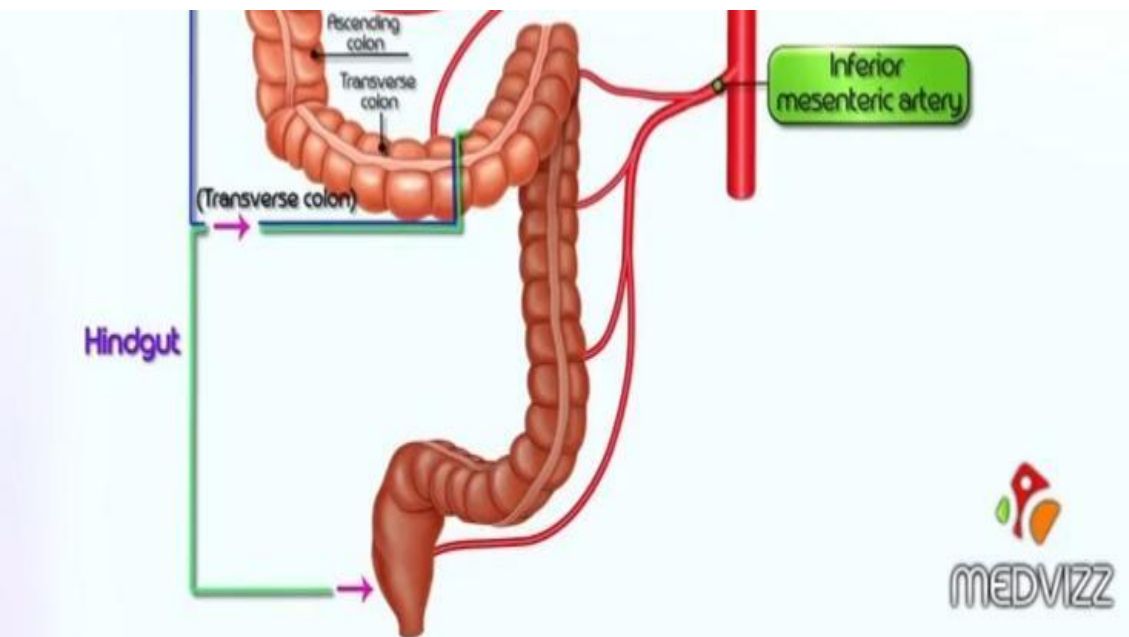
SUPERIOR MESENTERIC ARTERY

- Origin: Lower part of the vertebra L1
- It supplies the abdominal midgut
- Midgut includes
 1. Jejunum
 2. Ileum
 3. Cecum
 4. Appendix
 5. Ascending colon
 6. Right 2/3rd of transverse colon



INFERIOR MESENTERIC ARTERY

- Origin: Body of the vertebrae
- Supplies the hindgut



Paired arteries

Inferior phrenic artery

Origin: inferior to the aortic hiatus.

Supply: Inferior surface of the diaphragm .

Superior suprarenal gland.

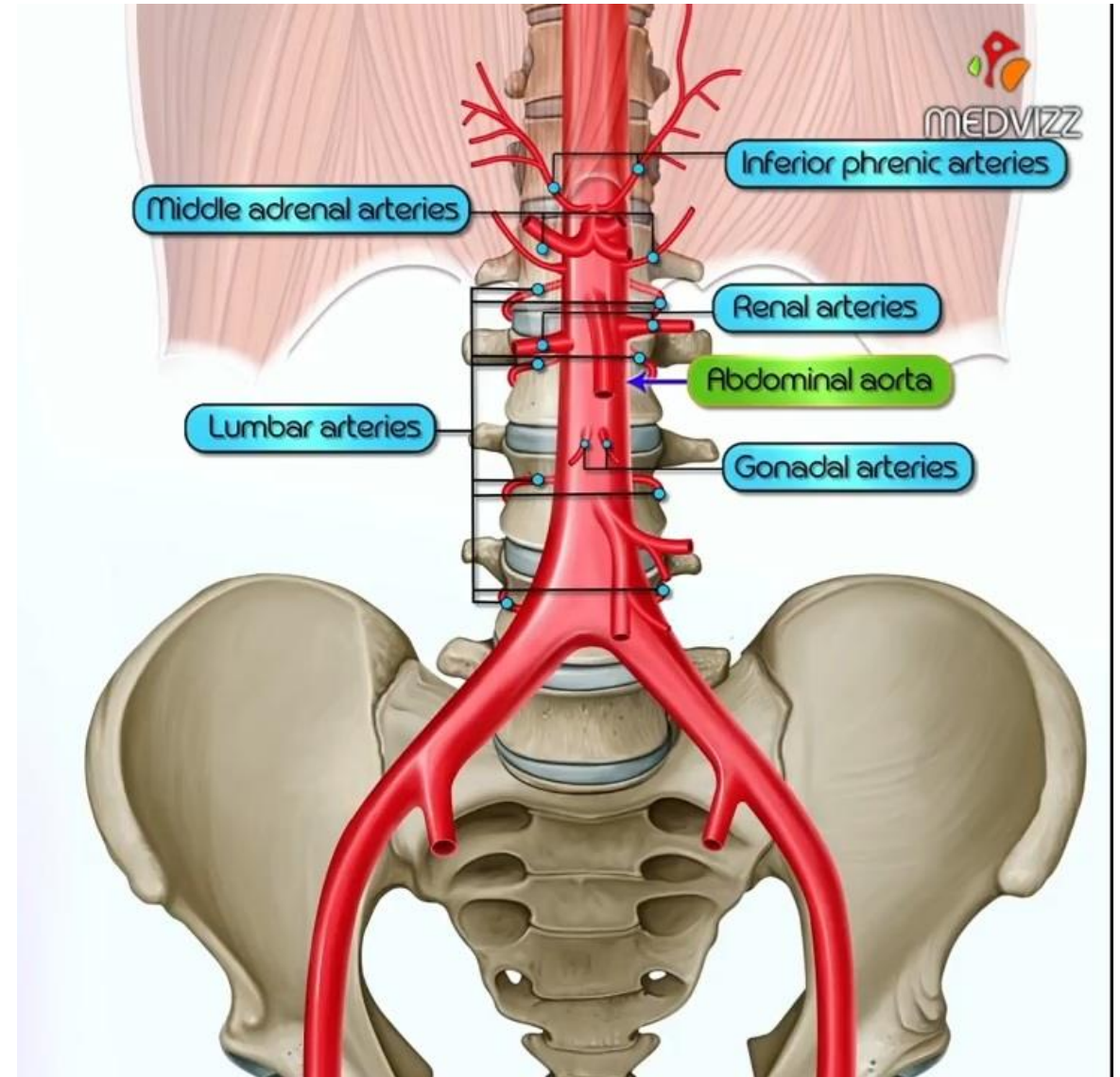
Middle adrenal artery/suprarenal artery

Direct branch of abdominal aorta.

- **Supply:** adrenal gland/ suprarenal gland.

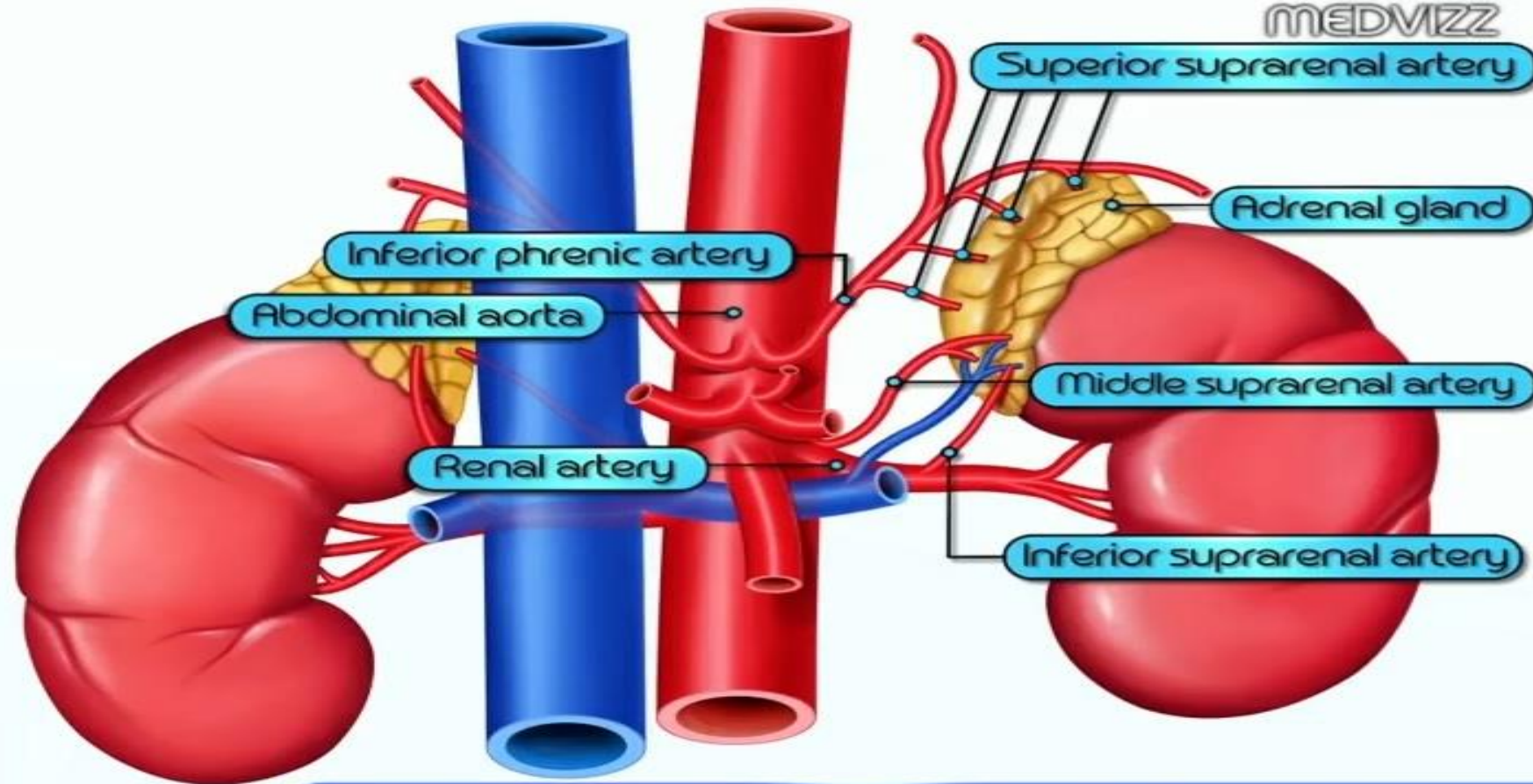
Renal artery

Origin: Arises between L1 and L2.





MEDVIZZ



Suprarenal gland supplied by 3 arteries

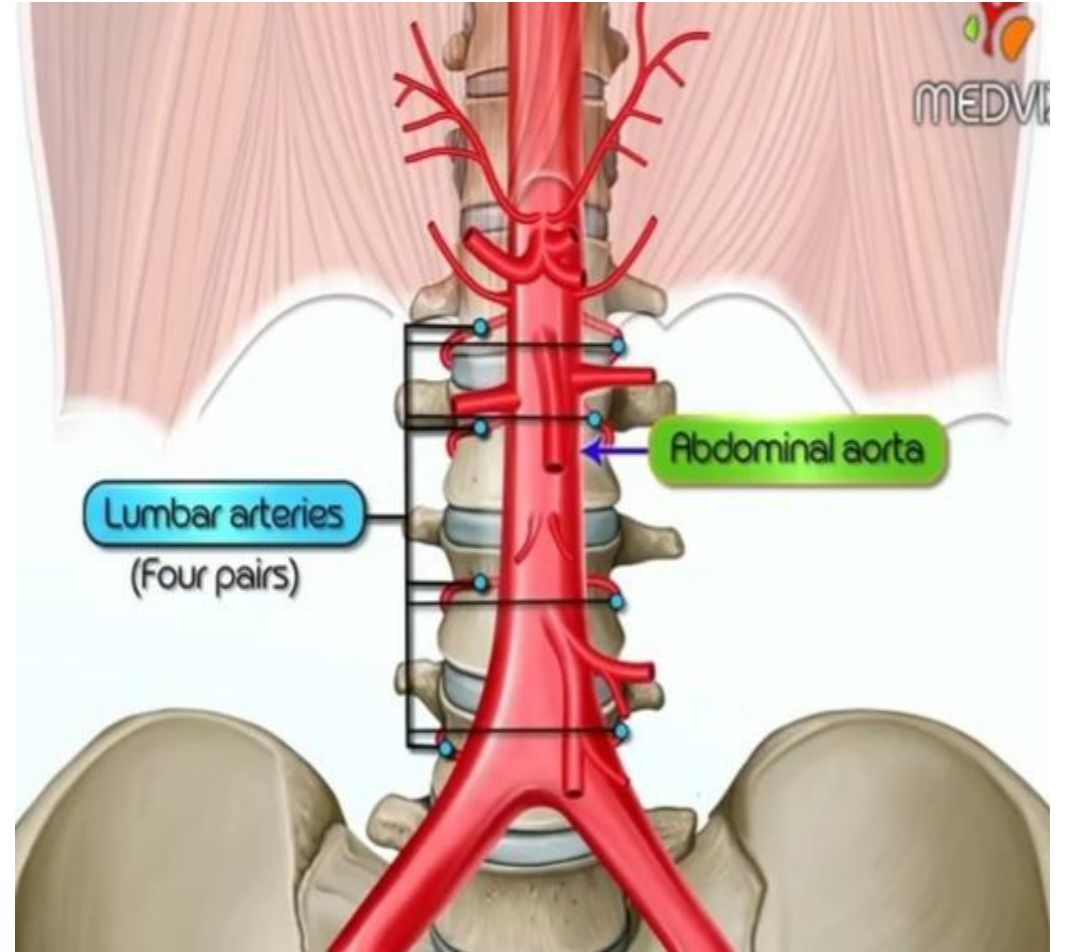
- Superior suprarenal artery - Inferior phrenic artery
- Middle suprarenal artery - Abdominal aorta
- Inferior suprarenal artery - Renal artery

Gonadal artery/testicular/ovarian artery

Origin: below the renal artery.
Supply: testis in male and ovaries in female.

Lumbar artery

origin: arise from posterior surface of abdominal aorta.
Supply: posteriori abdominal wall.



Median sacral artery

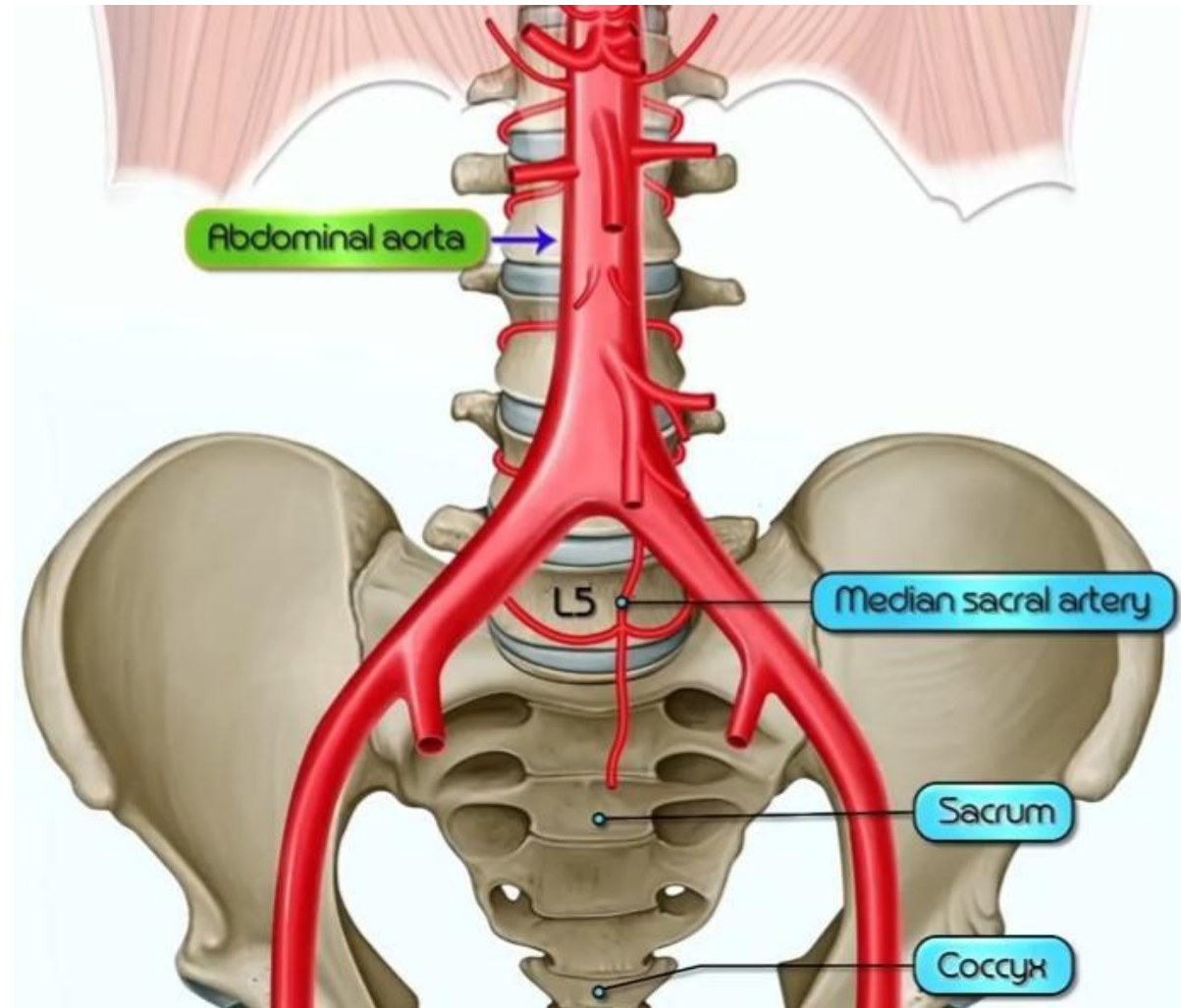
Final posterior branch of abdominal aorta.

Origin: arise just superior to the bifurcation.

Supply: the sacrum coccyx.

Terminal branch

Right and left common iliac artery.



”

**THANK
YOU!**