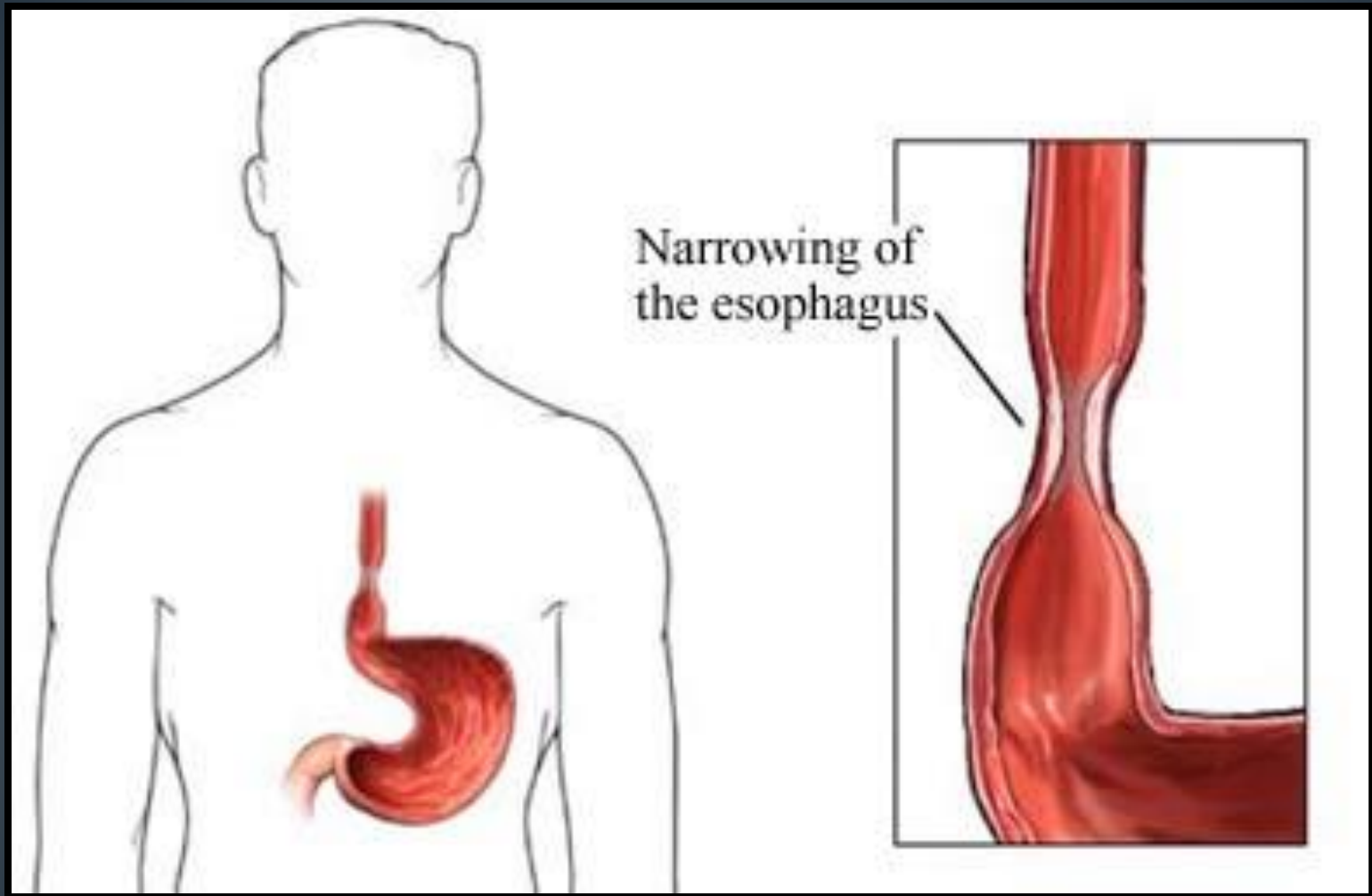
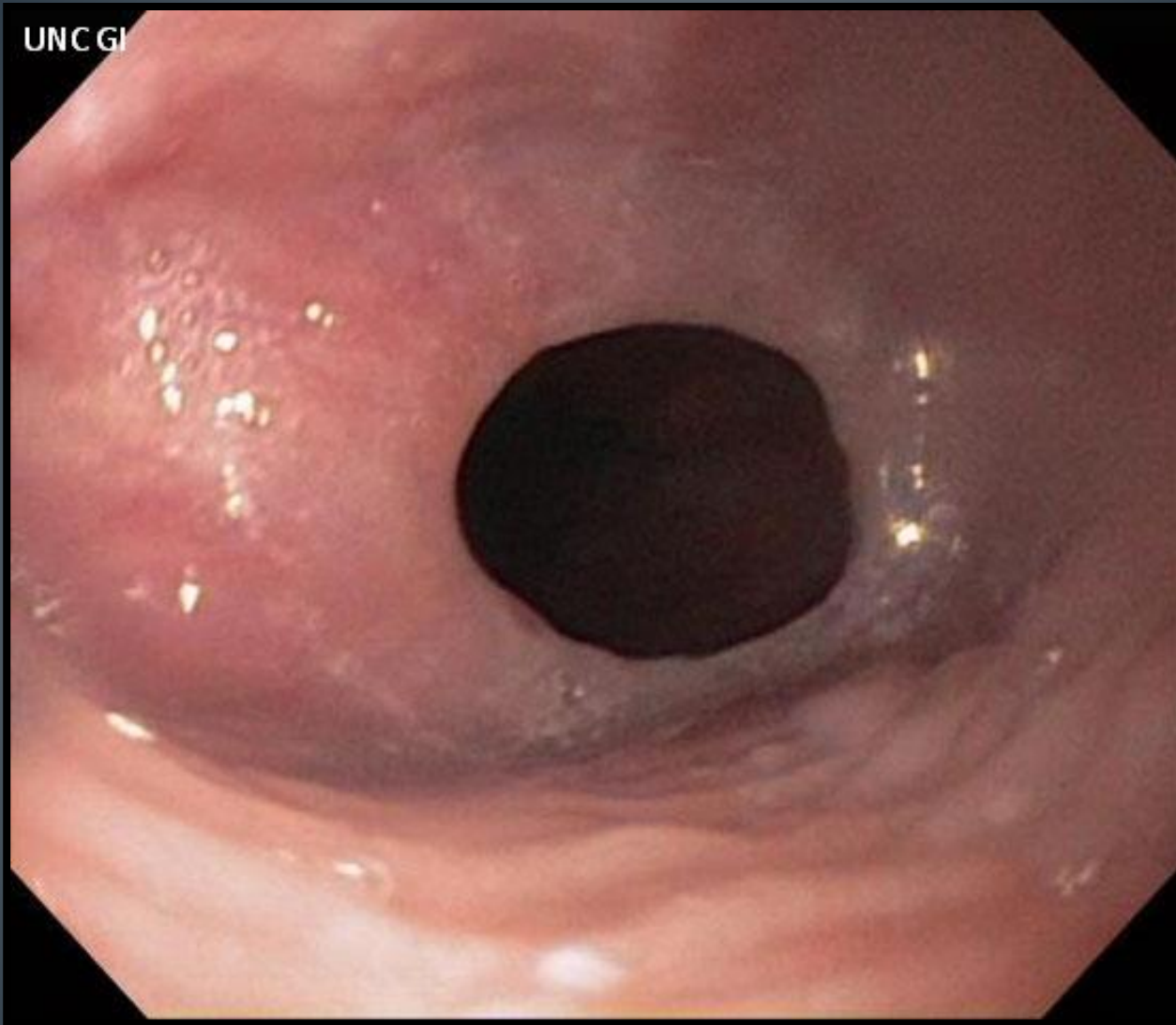


ESOPHAGEA L DISEASES

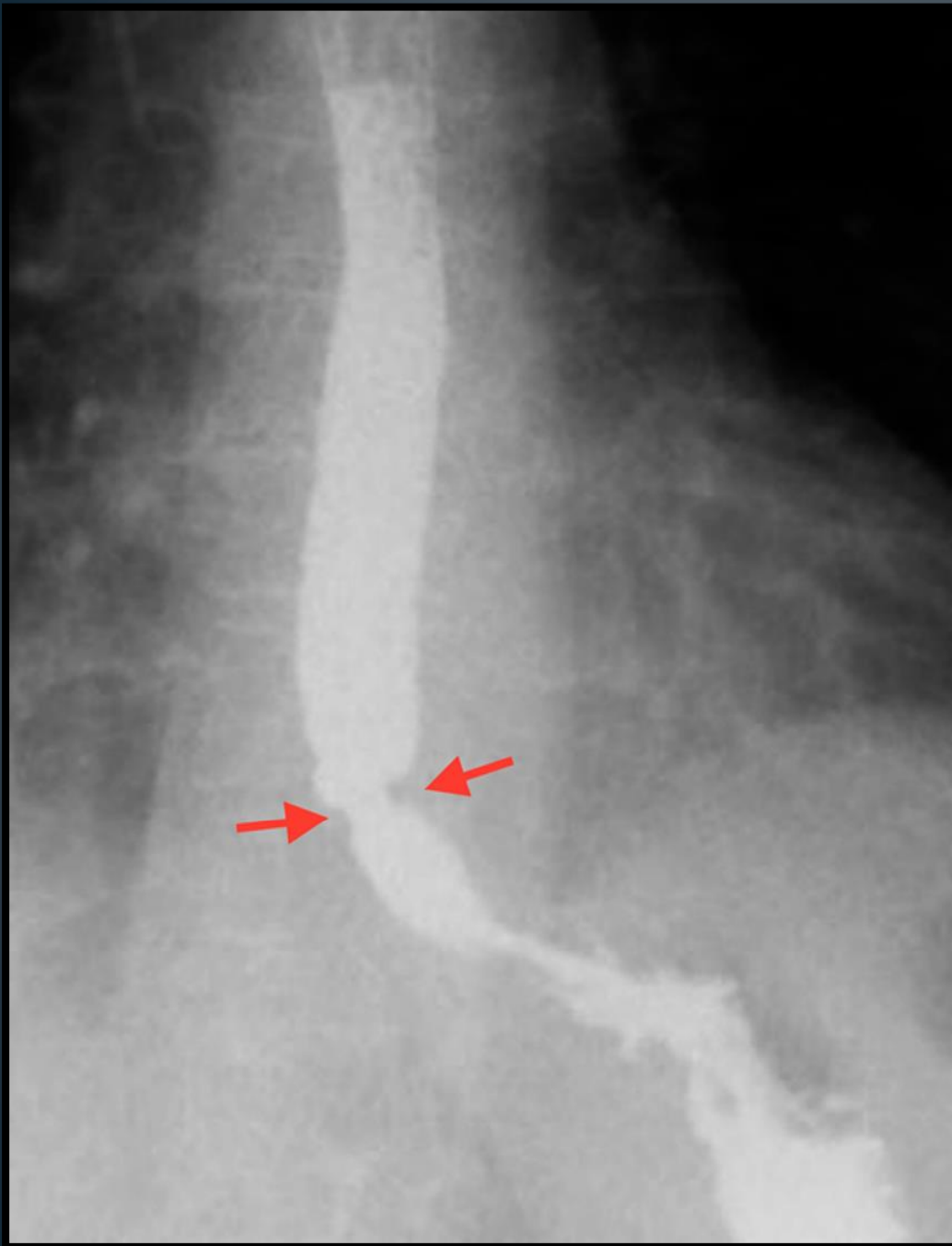
ESOPHAGEAL STRICTURE



ESOPHAGEAL STRICTURE

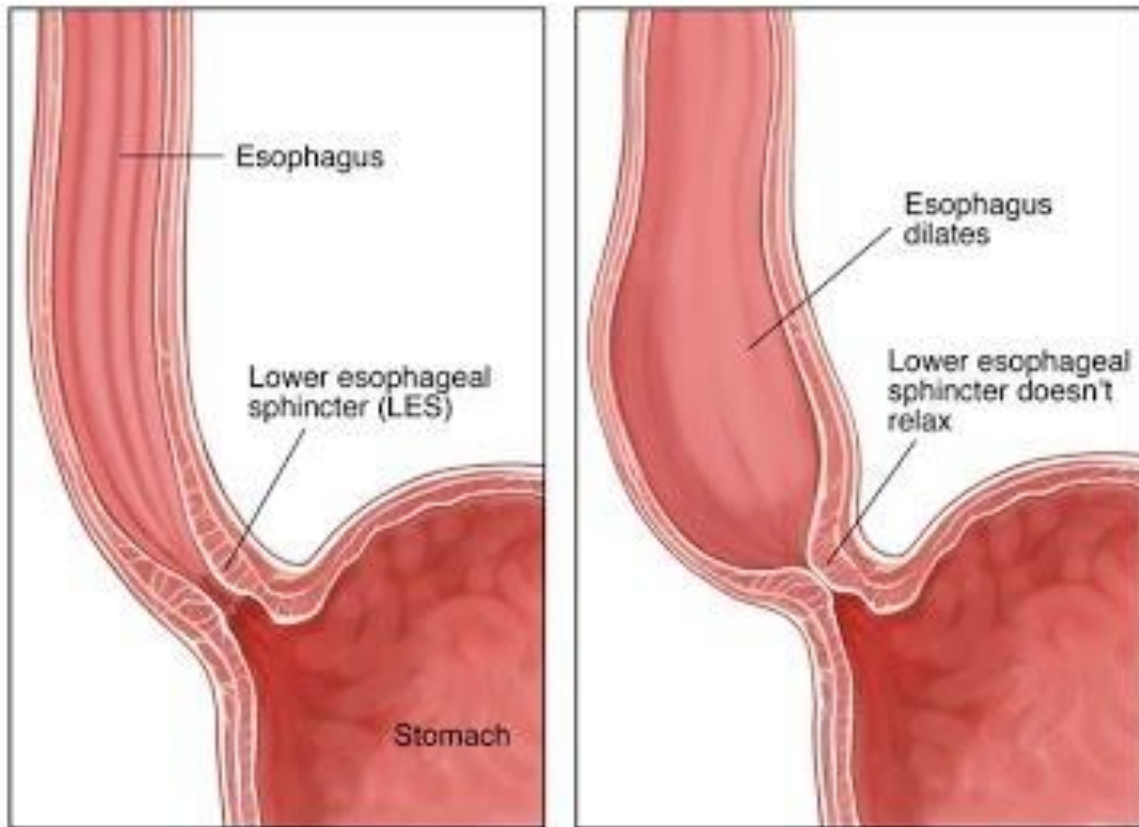


ESOPHAGEAL STRICTURE (endoscopy)



**DISTAL
ESOPHAGEAL
STRICTURE
(barium
swallow)**

ACHALASIA



Normal

Achalasia

Esophageal Achalasia

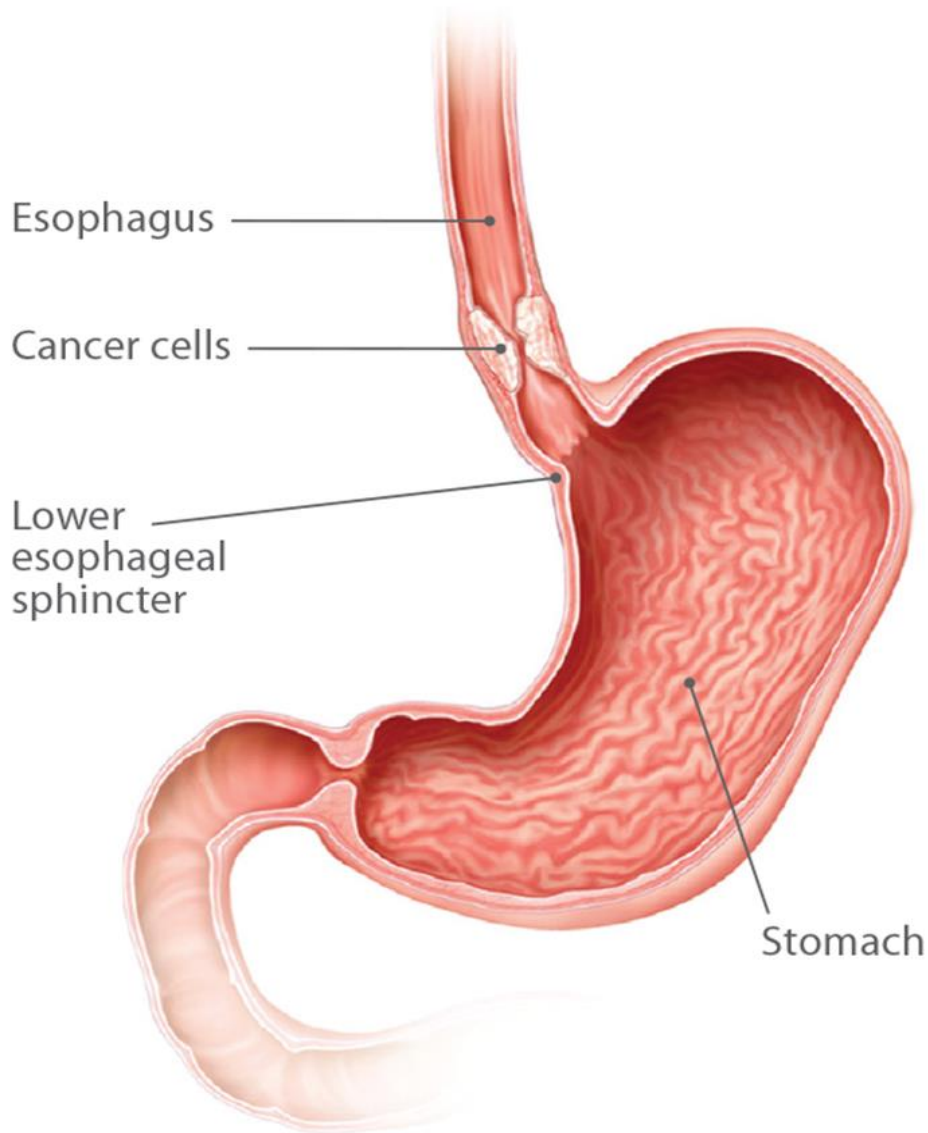
ACHALASIA



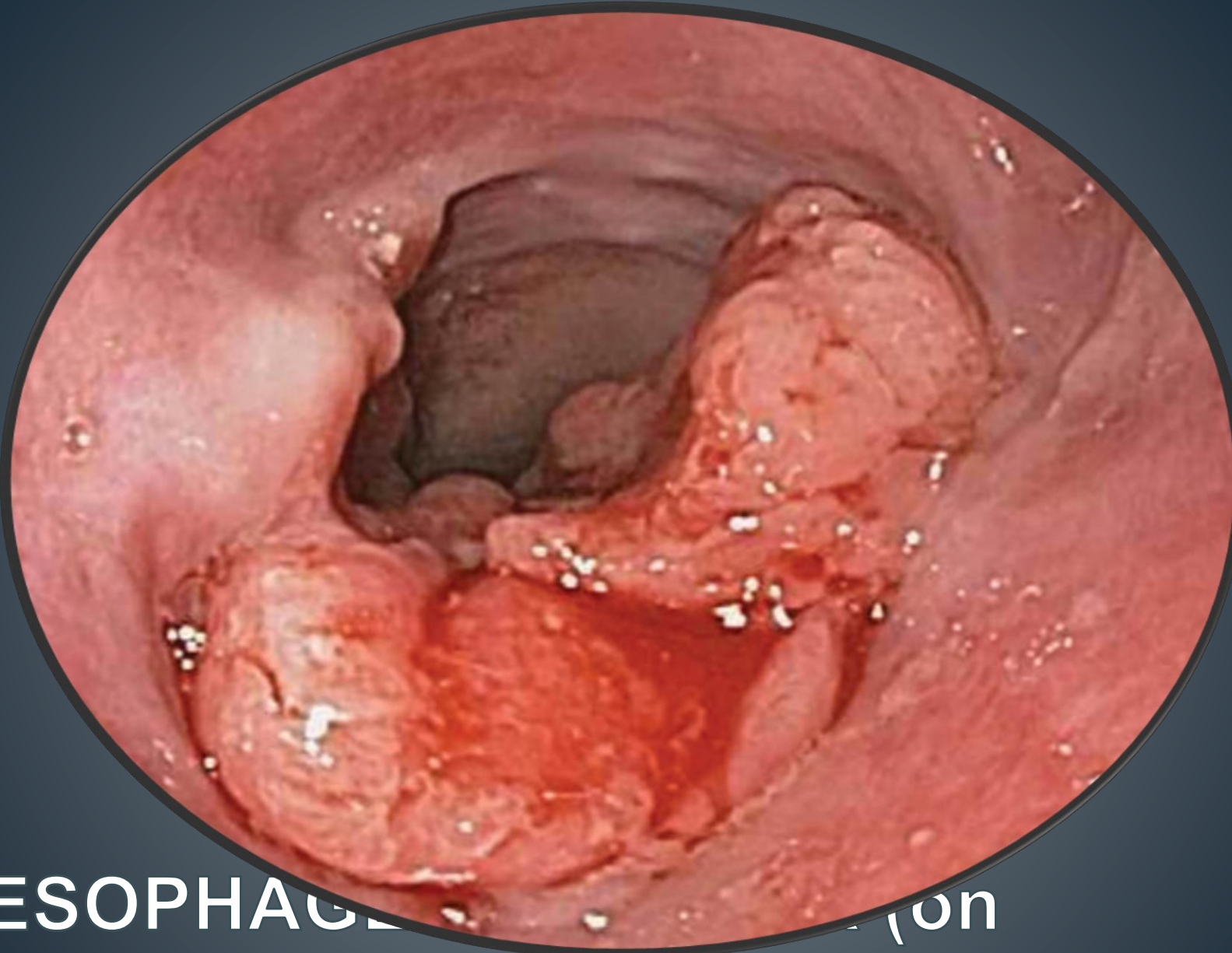
ACHALASIA
(bird's beak or
rat's tail
deformity on
barium
swallow)

ESOPHAGEAL CARCINOMA

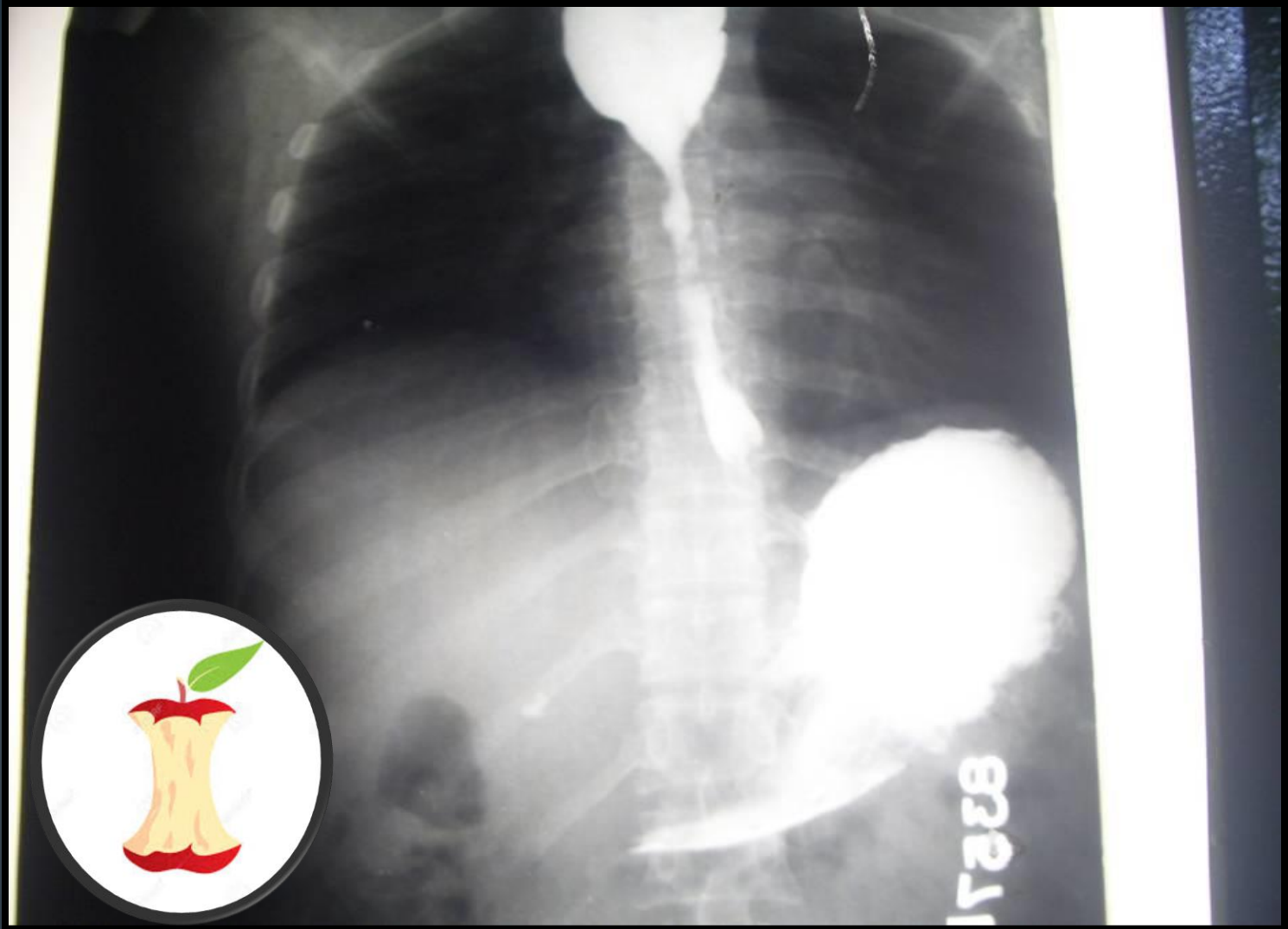
Esophageal Cancer Anatomy



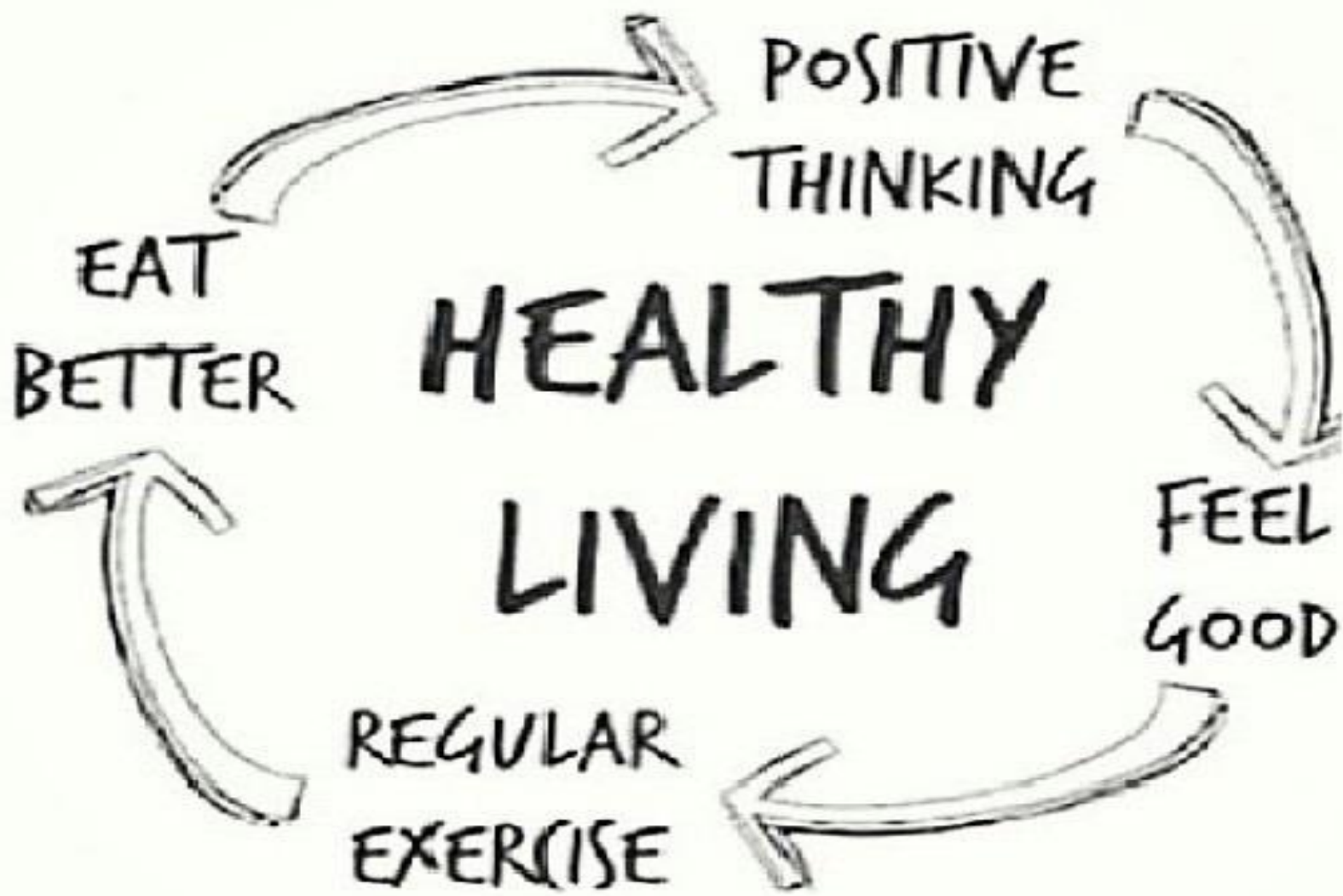
CARCINOMA ESOPHAGUS

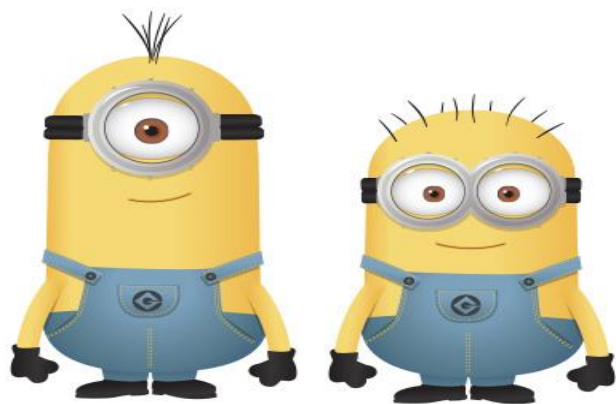


ESOPHAGEAL POLYPOID LESION (on
endoscopy)



ESOPHAGEAL CANCER (apple core appearance on barium swallow)





thanks a minion