

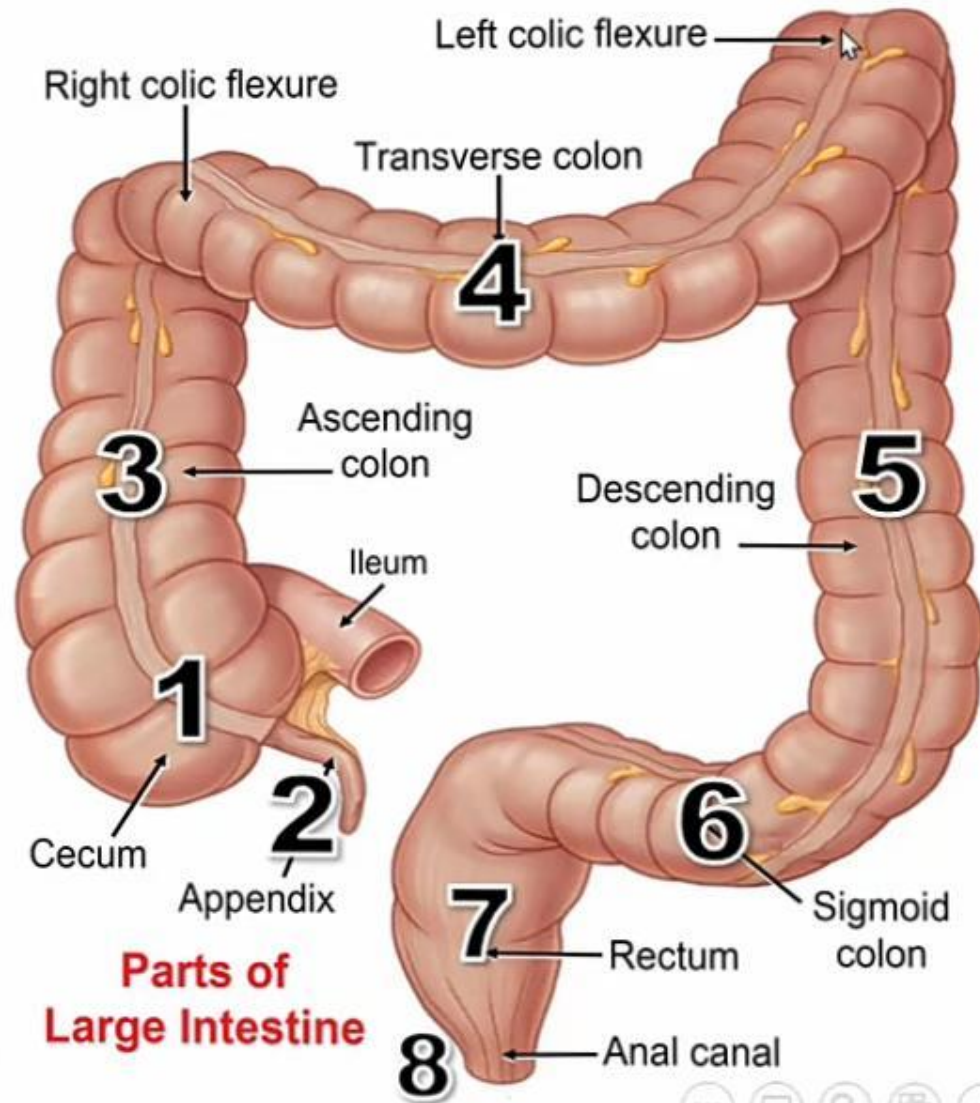
LARGE INTESTINE

KASHAF HAMEED KHATTAK

2nd year MBBS

PARTS OF LARGE INTESTINE

- ▶ 1. Caecum
- ▶ 2. Vermiform Appendix
- ▶ 3. Ascending Colon
- ▶ 4. Transverse Colon
- ▶ 5. Descending colon
- ▶ 6. Sigmoid Colon
- ▶ 7. Rectum
- ▶ 8. Anal Canal



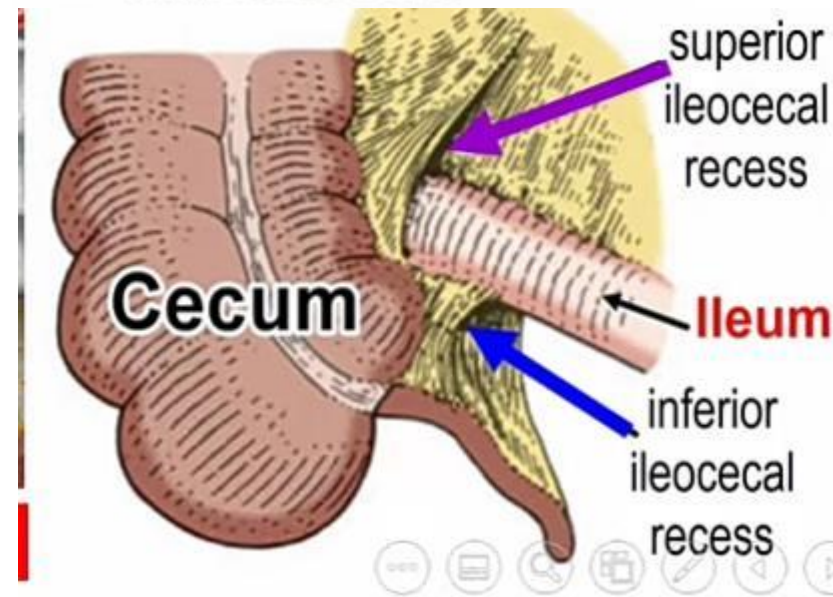
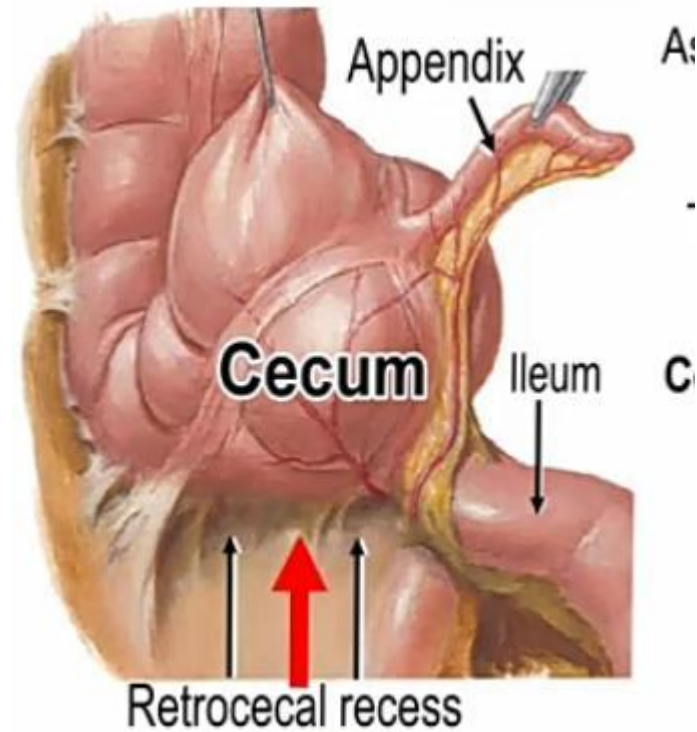
CECUM

PERITONEAL COVERING:

Compltey covered

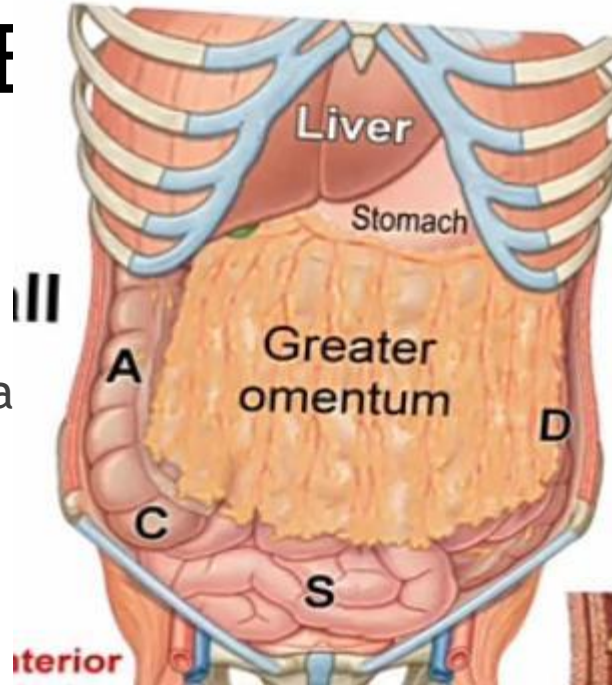
3.PERITONEAL RECESSES

- *Retrocecal Recess*>Appendix
- *Superior ileocecal Recess*>above the ileun
- *Inferior ileocecal Recess*>below the ileum



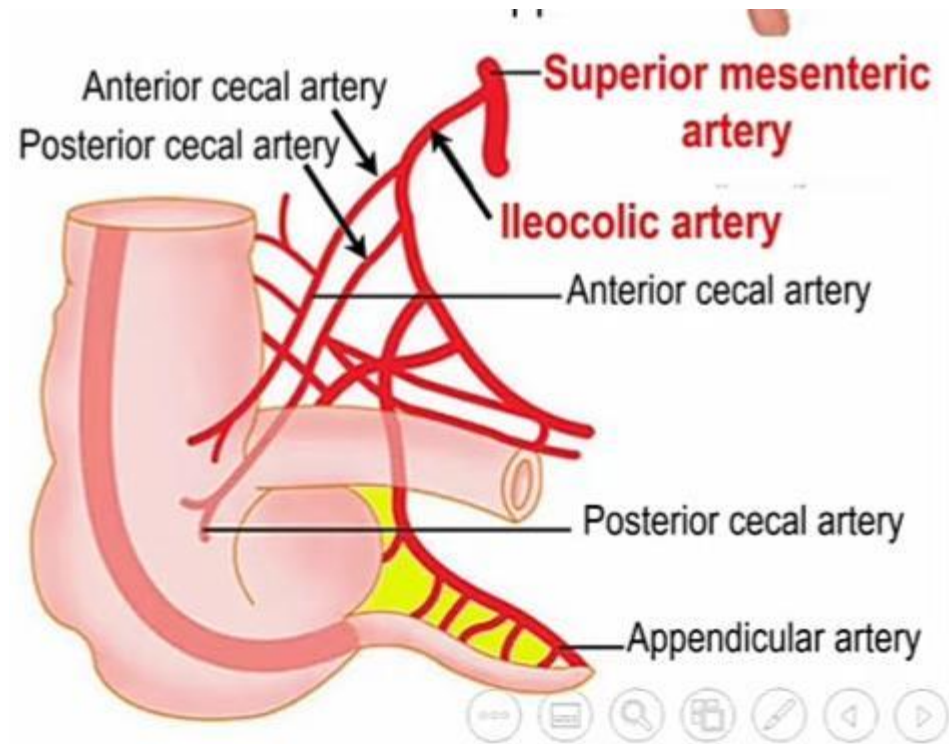
RELATIONS OF CE

- ▶ ANTERIORLY
- ▶ • Anterior abdominal wa
- ▶ • Greater omentum
- ▶ • Small intestine
- ▶ POSTERIORLY
- ▶ • Iliacus muscle
- ▶ • Psoas major muscle
- ▶ • Femoral Nerve b/w two muscles

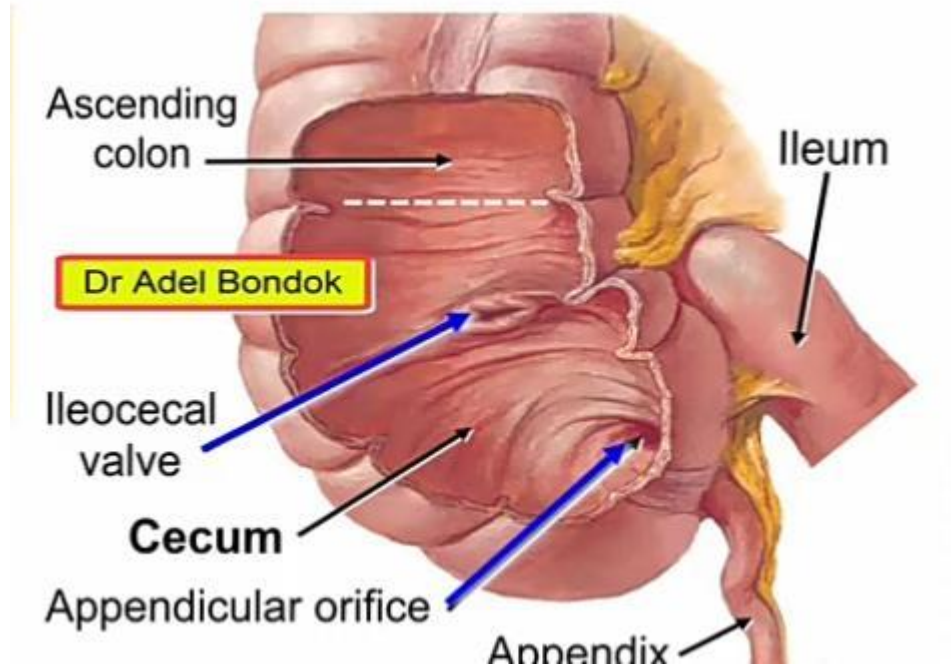


BLOOD SUPPLY OF CECUM

- ▶ Anterior & Posterior Cecal arteries frm iliocolic artery(Superior mesenteric artery)
- ▶ INTERNAL APPEARANCE OF CECUM
- ▶ Has 2 Openings
- ▶ •Ileocecal valve
- ▶ •Appendicular Orifice

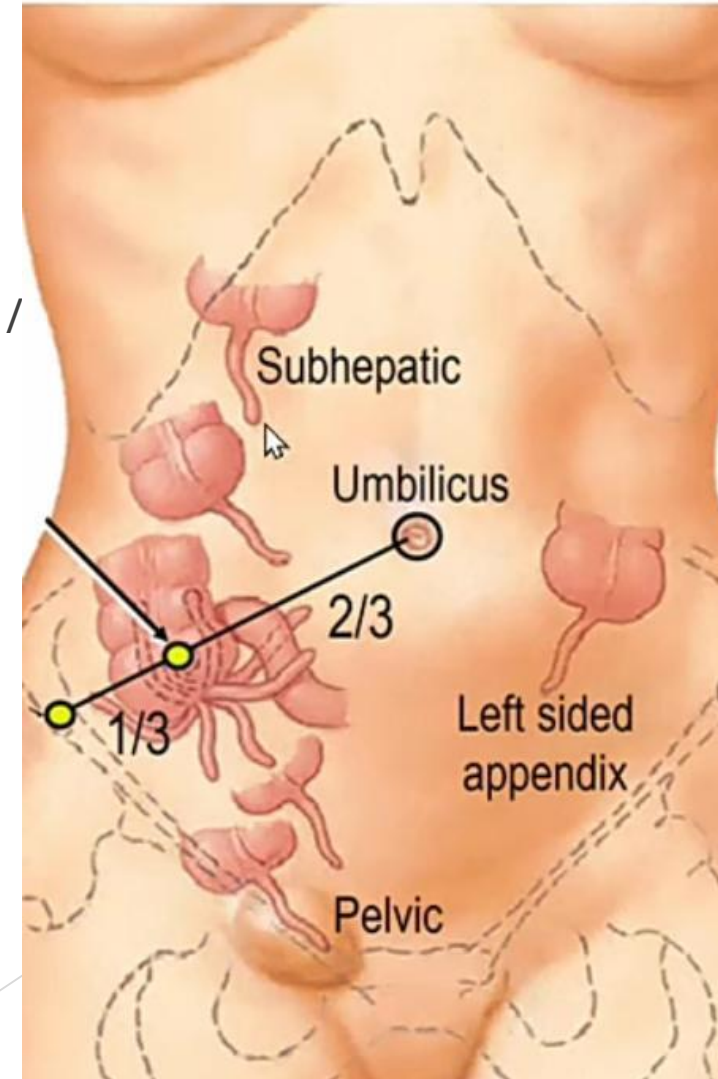


Openings of Cecum



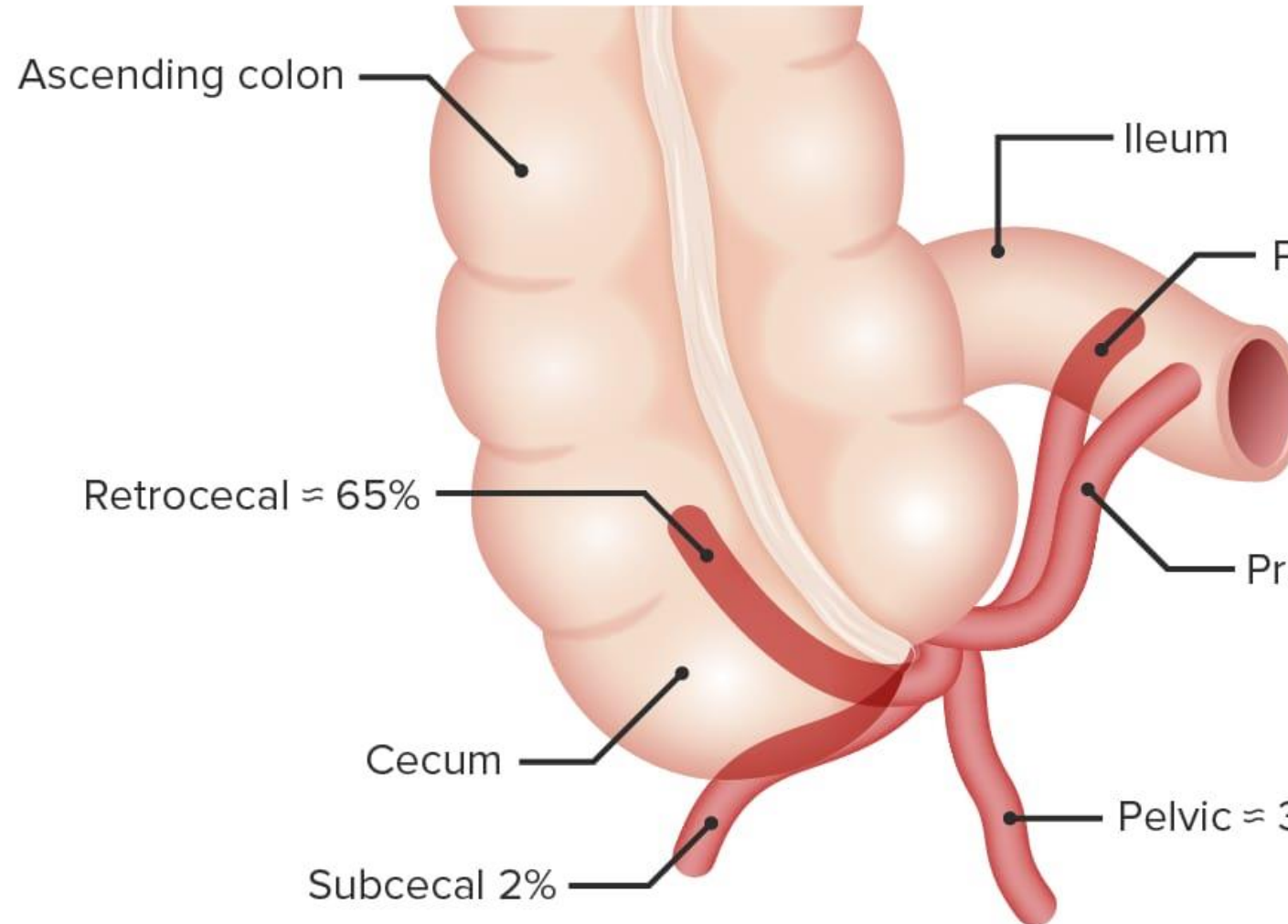
VERMIFORM APPENDIX

- ▶ Opposite to MC.BURNEY'S POINT
- ▶ Base of appendix lies opposite the junction between medial 2/3 & lateral 1/3 line b/w superior iliac spine & umbilicus
- ▶ PERITONEAL COVERING: completely covered has mesoappendix contains appendicular artery from ileocolic artery



POSITION OF APPENDIX

- ▶ Base of Appendix lies in Right iliac fossa
- ▶ Position of Tip variable
- ▶ Retrocecal: Behind the cecum(commonest)
- ▶ Pelvic
- ▶ Paracecal
- ▶ Subcecal
- ▶ Preilecal
- ▶ Postileal
- ▶ Subheptic



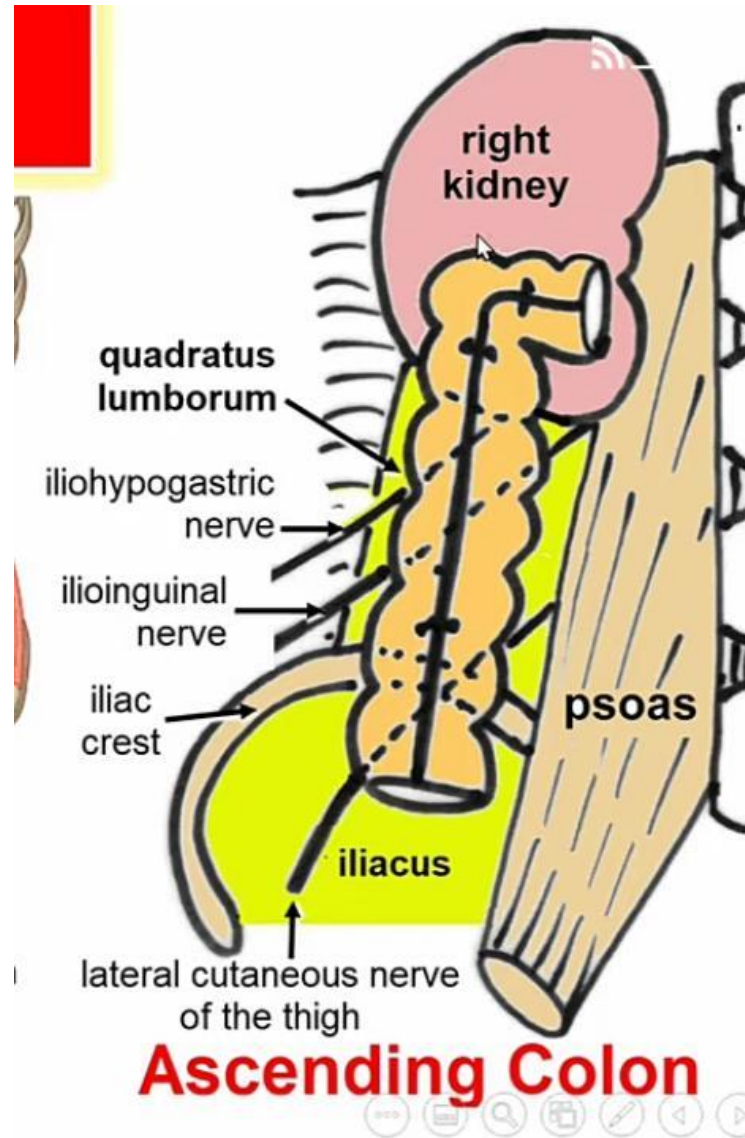
ASCENDING COLON

- ▶ Relations
- ▶ Anteriorly:
- ▶ Anterior abdominal wall
- ▶ Small intestine
- ▶ Greater Omentum
- ▶ Posteriorly
- ▶ Iliacus muscle
- ▶ Iliac crest
- ▶ Quadratus lumborum
- ▶ (Separated by 2 Nerves)

Iliohypogastric Nerve

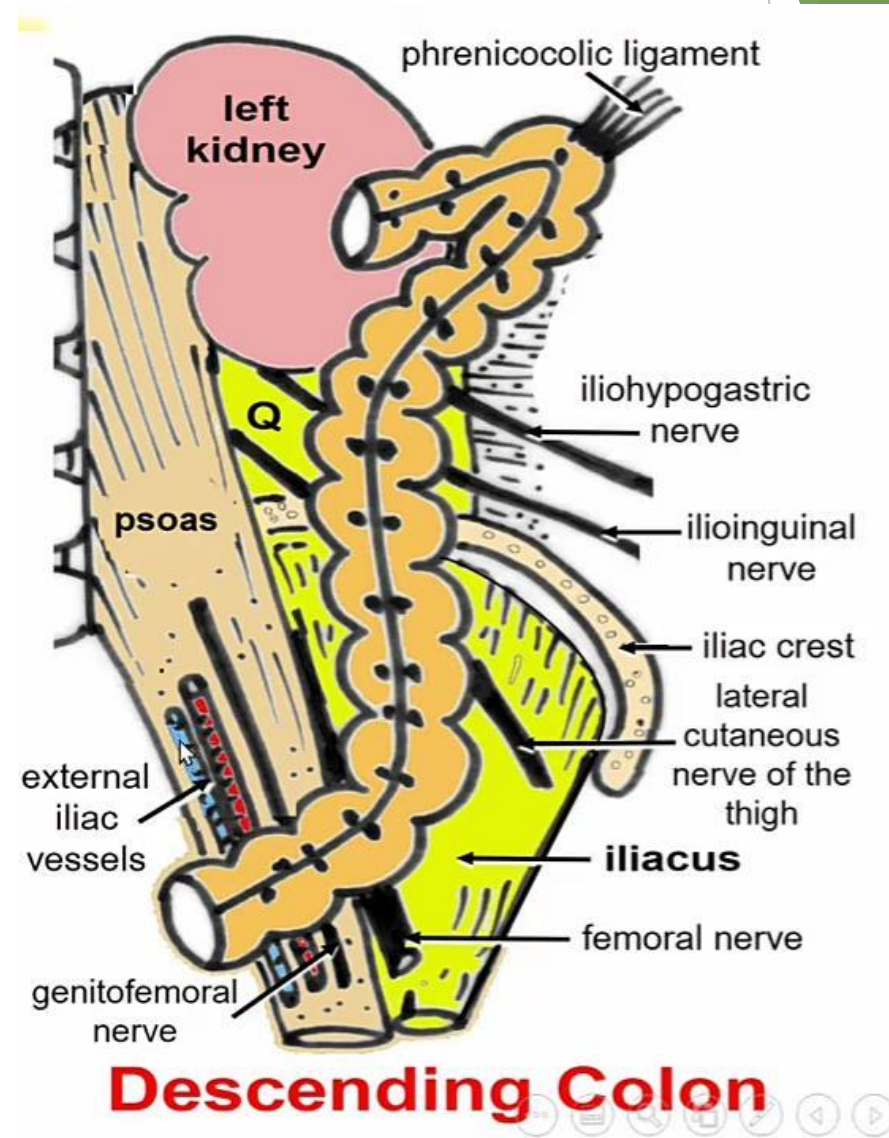
Ilioinguinal canal

• Right Kidney



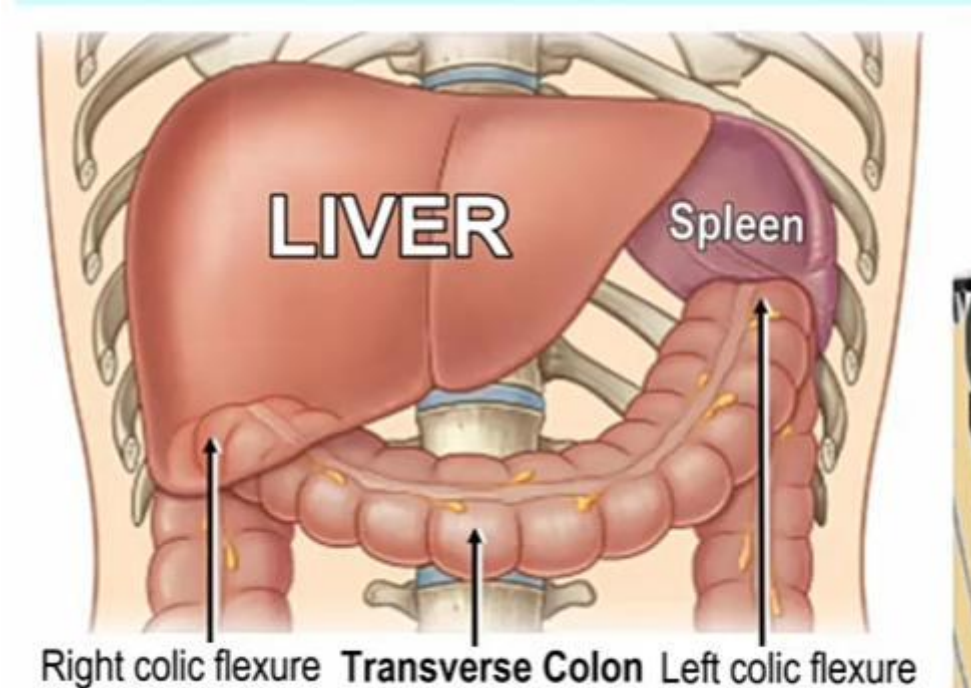
DESCENDING COLON

- ▶ Same anterior relations as Ascending Colon
- ▶ POSTERIOR RELATIONS:
- ▶ Left Kidney
- ▶ Quadratus Lumborum
- ▶ (iliohypogastric Nerve, ilioinguinal Nerve)
- ▶ Iliac Crest
- ▶ Iliacus muscle
- ▶ Lateral cutaneous Nerve of Thigh
- ▶ Femoral Nerve



TRANSVERSE COLON

- ▶ Begins at Right colic flexure in Right Hypochondrium below liver
- ▶ Ends at left colic flexure in left hypochondrium below spleen
- ▶ PERITONEAL COVERING: all covered except 1st 2 inches are adherent to duodenum & pancreas
- ▶ Has Transverse mesocolon



RELATIONS

Anteriorly

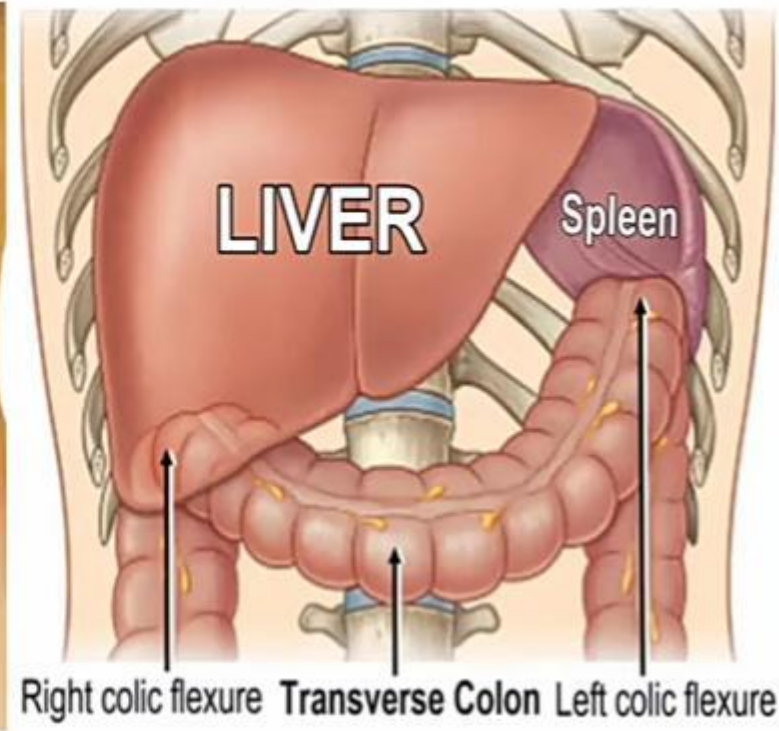
Anterior abdominal wall

Greater Omentum

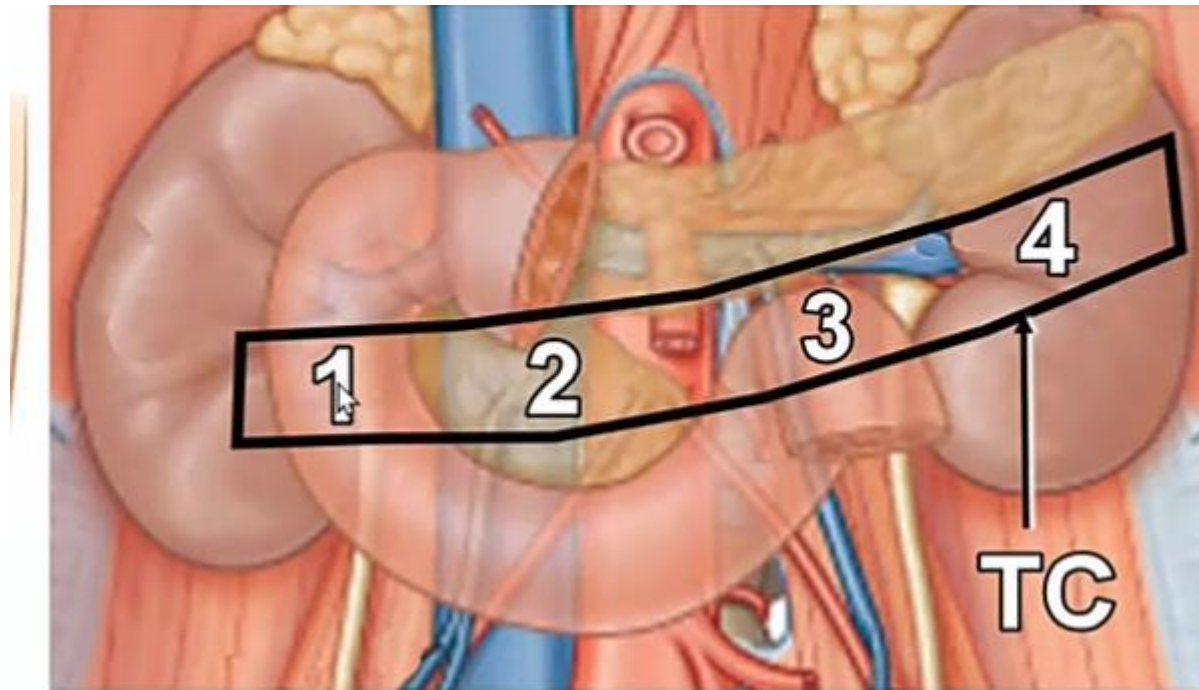
Greater Sac

Liver above Right colic flexure

Spleen above Left colic flexure



- ▶ Posteriorly
- ▶ 2nd part of Duodenum
- ▶ Head of Pancreas
- ▶ Small intestine
- ▶ Left Kidney



Length & Position of Each part

Length & Position of Each Part		
Part	Length	Position
Cecum	3 inches	Right iliac fossa
Appendix	3 inches	Right iliac fossa (65% retrocecal)
Ascending C	5 inches	From right iliac fossa to right hypochondrium (in right lumbar)
Transverse C	15 inches	From right hypochondrium to left hypochondrium
Descending C	10 inches	From left hypochondrium to left pelvic brim (in the left lumbar)
Sigmoid C	10 inches	Begins at the pelvic brim and becomes the rectum at the level of the 3 rd sacral vertebra
Rectum	5 inches	Posterior part of the pelvis
Anal canal	1.5 inches	Perineum (anal triangle)

(2): 3" cecum & appendix

(2): 5" AC & rectum

(2): 10" DC & SC

(1): 15" TC

Dr Adel Bondok ®

BLOOD SUPPLY OF EACH PARTS

- ▶ Superior mesenteric Arteries:
- ▶ Midgut: Cecum,Appendix,Ascending Colon & Right 2/3 of Transverse Colon
- ▶ Inferior Mesenteric Artery:
- ▶ Hindgut:left 1/3 of Transverse colon,Descending & sigmoid colon ,Rectum, & upper part of Anal canal
- ▶ Caecum: Anterior & Posterior cecal arteries frm iliocoluc artery(Superior mesenteric artery)
- ▶ Appendix:Appendicular artery

NERVE SUPPLY

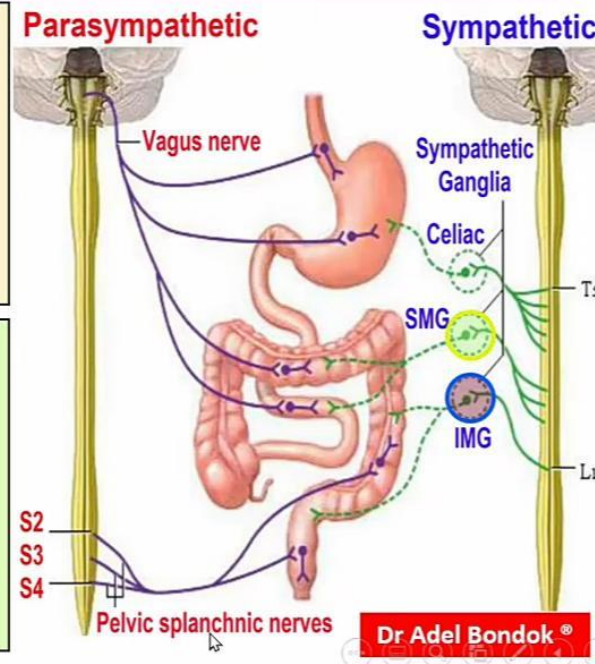
Nerve Supply of the Large Intestine

Midgut: Cecum, Appendix, Ascending Colon and Rt 2/3 of the Transverse Colon

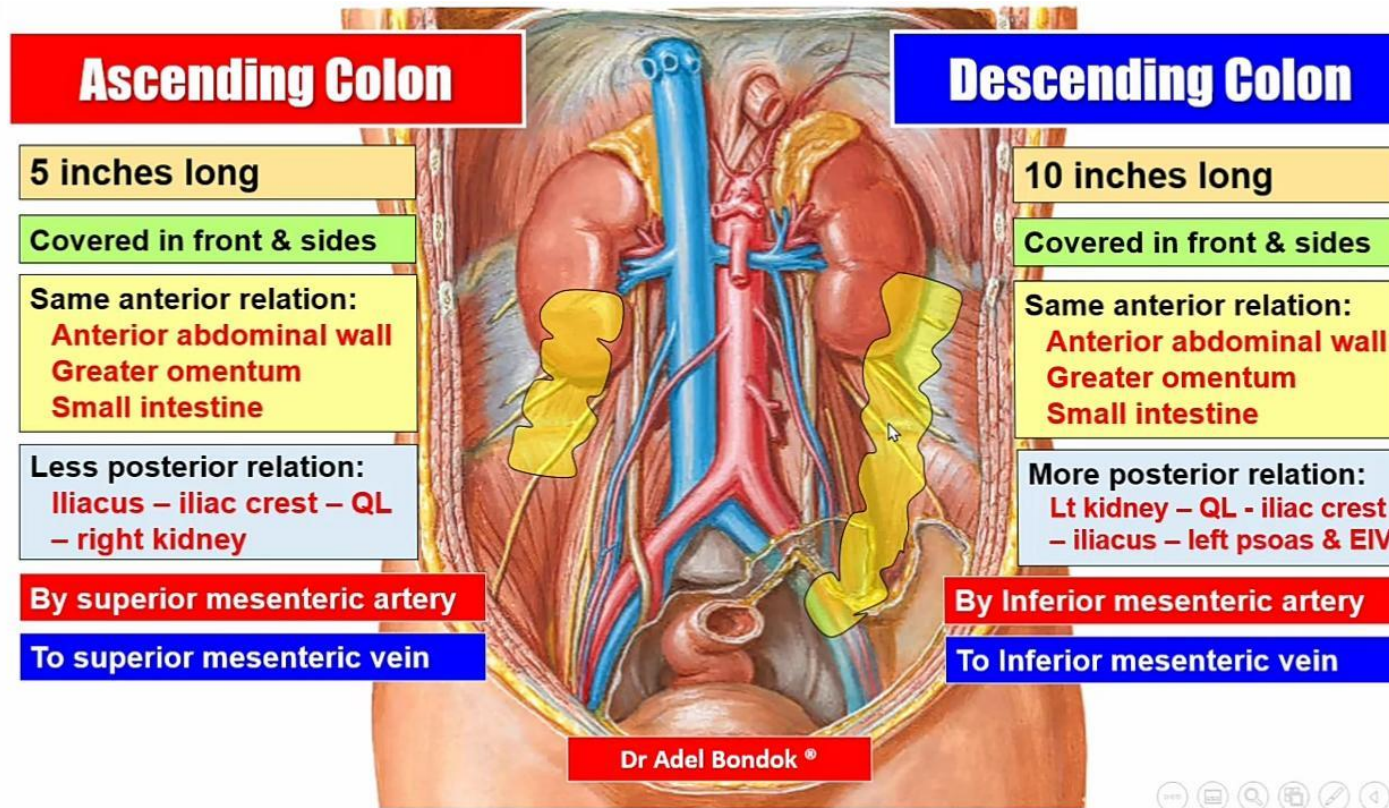
- 1. Sympathetic:** superior mesenteric plexus (by the lesser splanchnic nerve)
- 2. Parasympathetic:** Vagus nerve

Hindgut: Descending Colon, Sigmoid Colon, Rectum & Upper part of the Anal Canal

- 1. Sympathetic:** inferior mesenteric plexus (by the lumbar splanchnic nerves)
- 2. Parasympathetic:** pelvic splanchnic nerves S2, 3, 4



Difference



Thank You
For Your Attention!

Any Questions

