

بِسْمِ اللَّهِ الرَّحْمَنِ الرَّحِيمِ

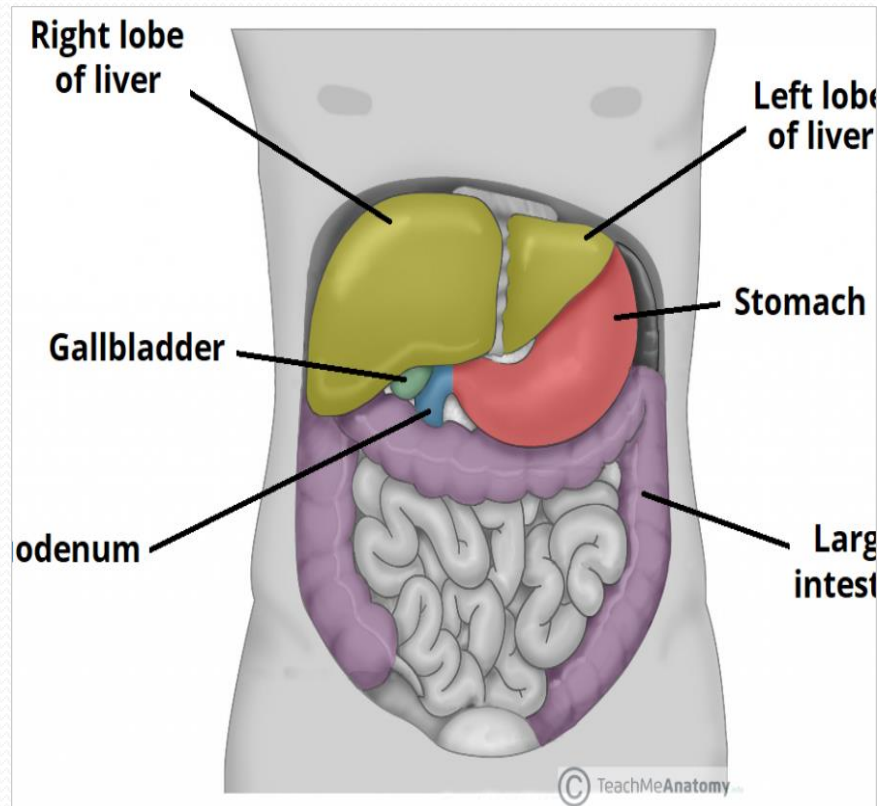
# LIGAMENTS OF LIVER BLOOD SUPPLY,NERVE SUPPLY LYMPH DRAINAGE

Mahnoor Babar,67

2<sup>nd</sup>year

# CONTENTS

- Ligaments of liver
- Falciform ligament, coronary ligaments, triangular ligaments, ligamentum teres hepatus, ligamentum venosus.
- Blood supply of liver
- Lymph drainage
- Nerve supply



## LIVER

It is peritoneal organ positioned in right upper quadrant

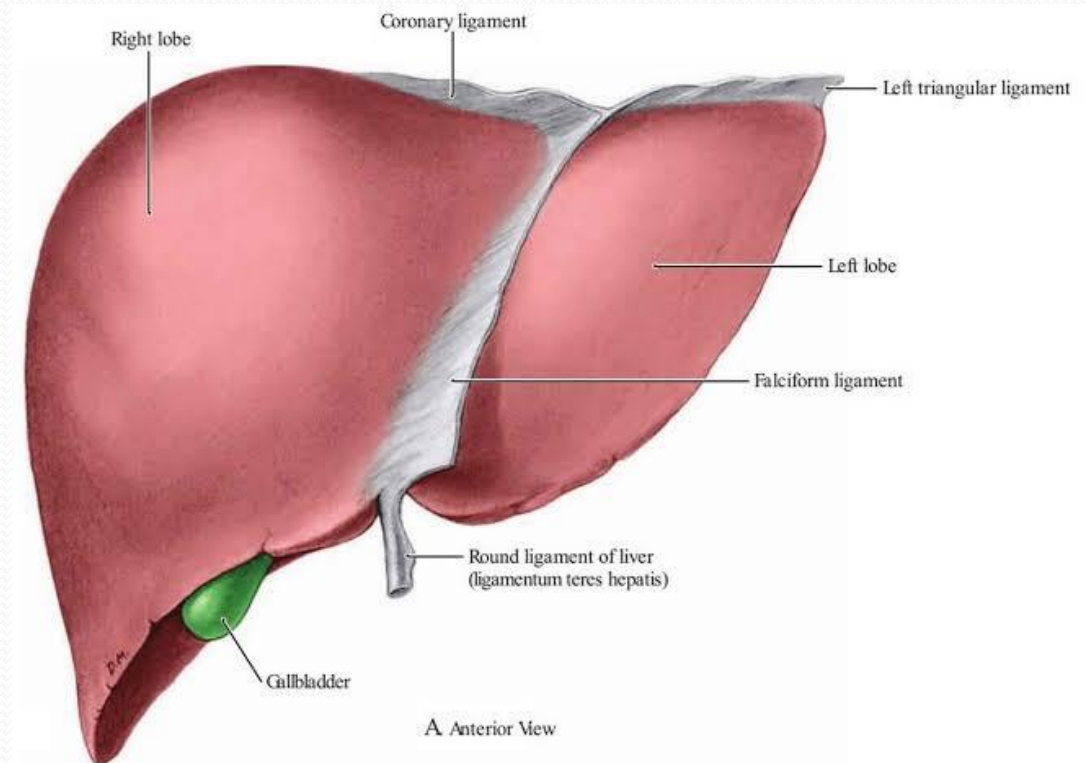
Main functions are

- Production of bile
- Glycogen storage
- Clotting factor production

# TYPES OF LIVER LIGAMENTS

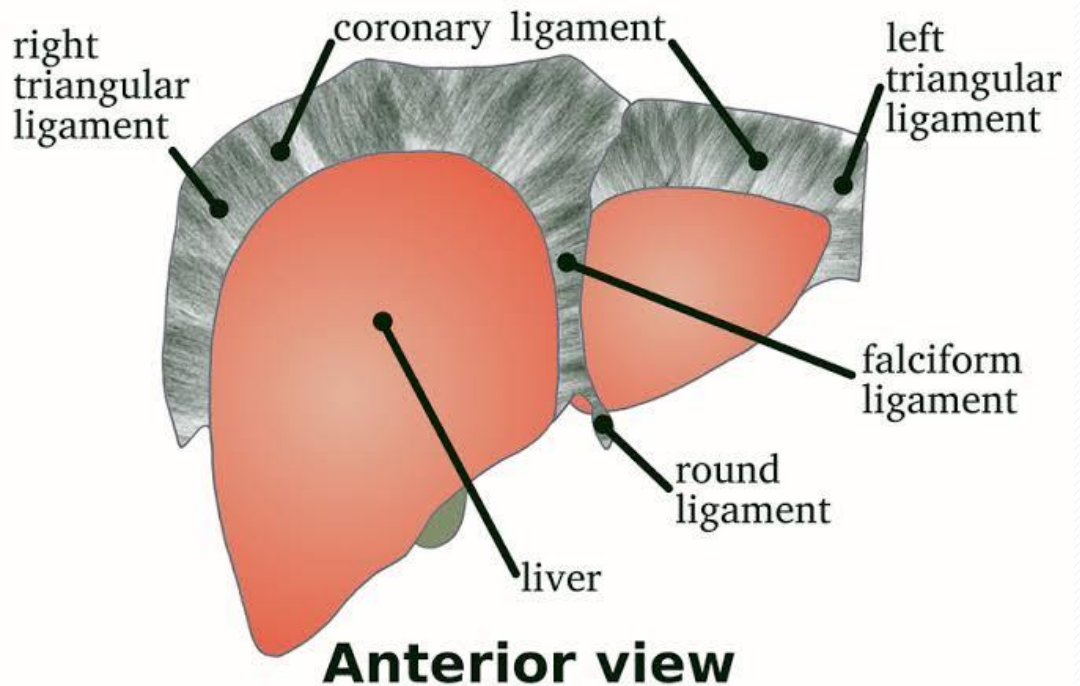
## ***FALCIFORM*** ***LIGAMENT***

- Double layered peritoneum fold that separates right and left lobe
- Attaches liver to anterior abdominal wall
- Extends from umbilicus to liver



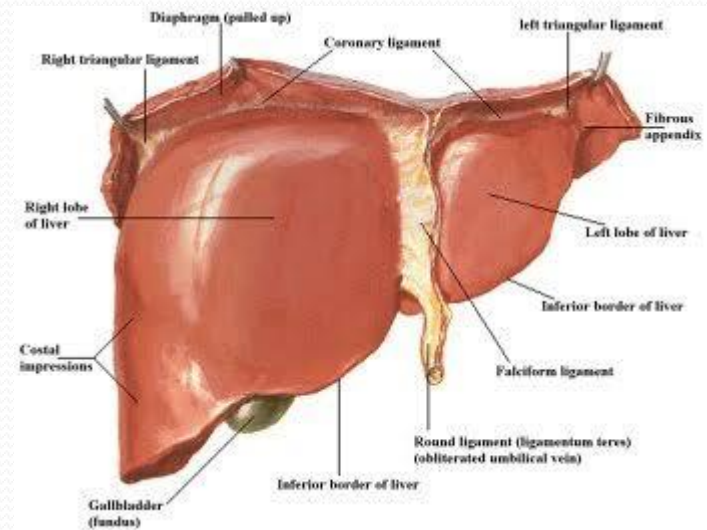
# CORONARY LIGAMENTS

- Attach superior surface of liver to inferior surface of diaphragm
- Demarcates bare area of liver
- Anterior coronary ligament and posterior coronary ligament



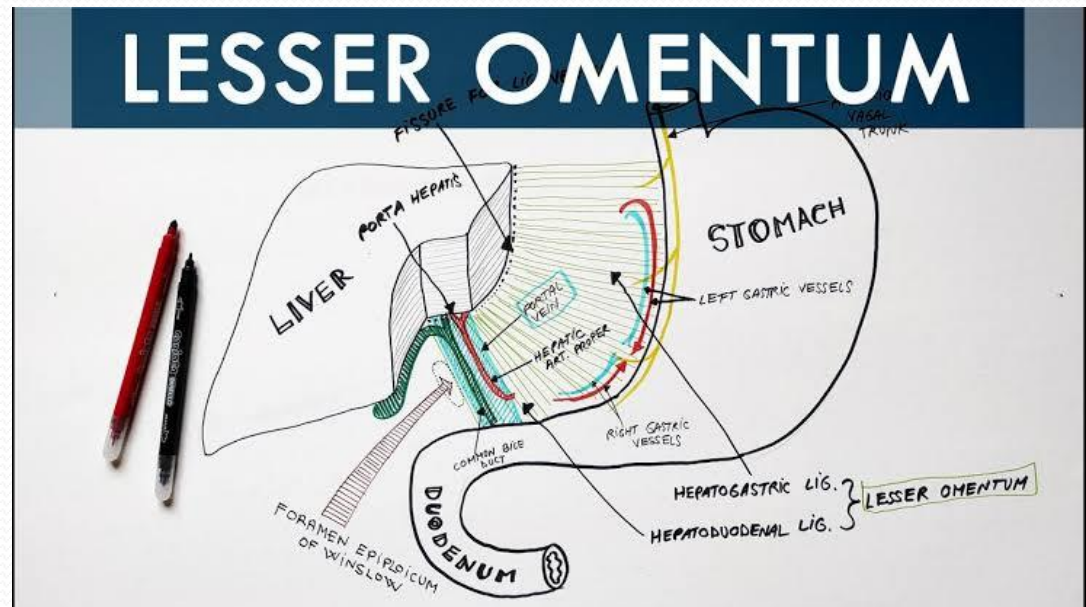
# TRIANGULAR LIGAMENTS

- Formed by union of anterior and posterior coronary ligaments at apex of liver
- Right and Left triangular ligaments



# LESSER OMENTUM

- Attaches liver to lesser curvature of stomach and first part of duodenum
- Hepato duodenal
- Hepato gastric

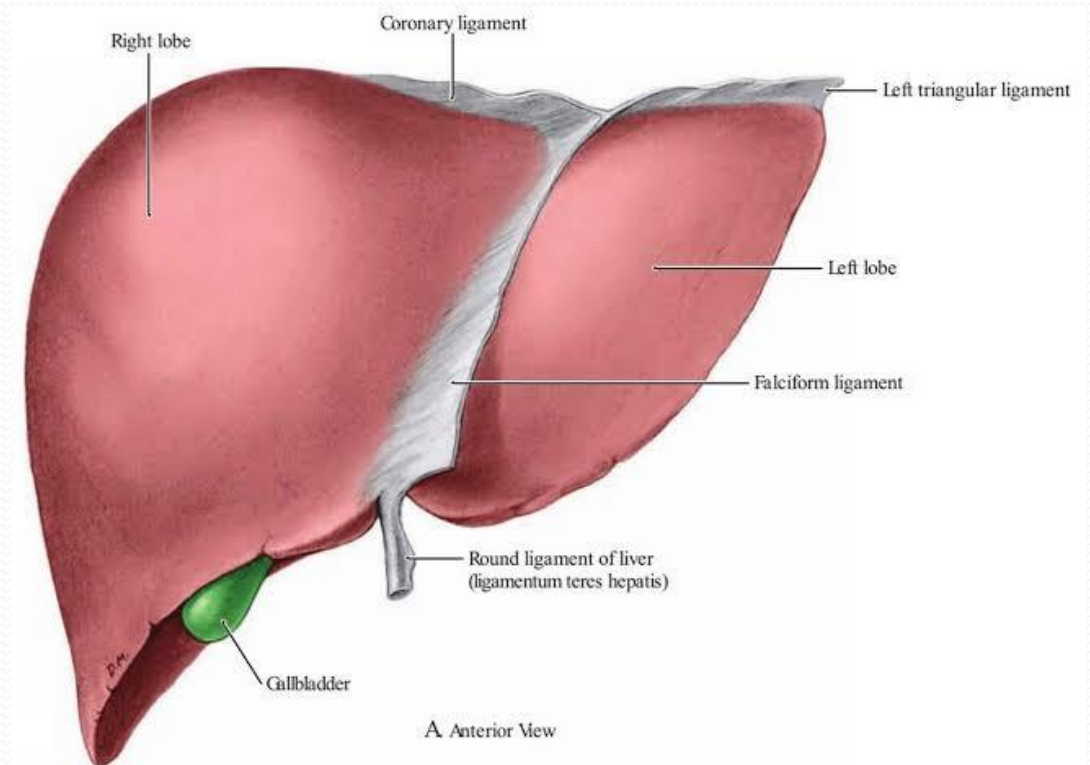




# LIGAMENTUM

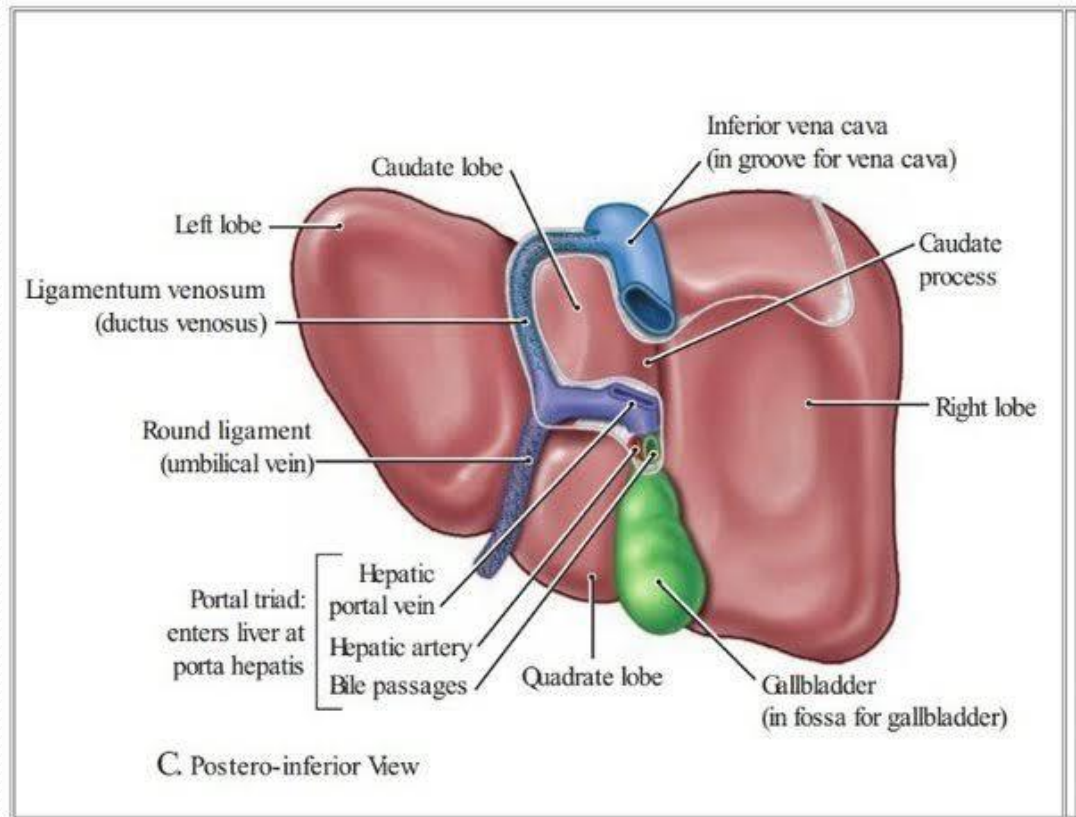
## TERES (Round ligament)

- Free end of falciform ligament.
- Remnant of left umbilical vein and runs from umbilicus to liver.



# LIGAMENTUM VENOSUS (Antrius' ligament)

- Remnant of ductus venosus.
- Attached to left branch of portal vein and join inferior venaceva .



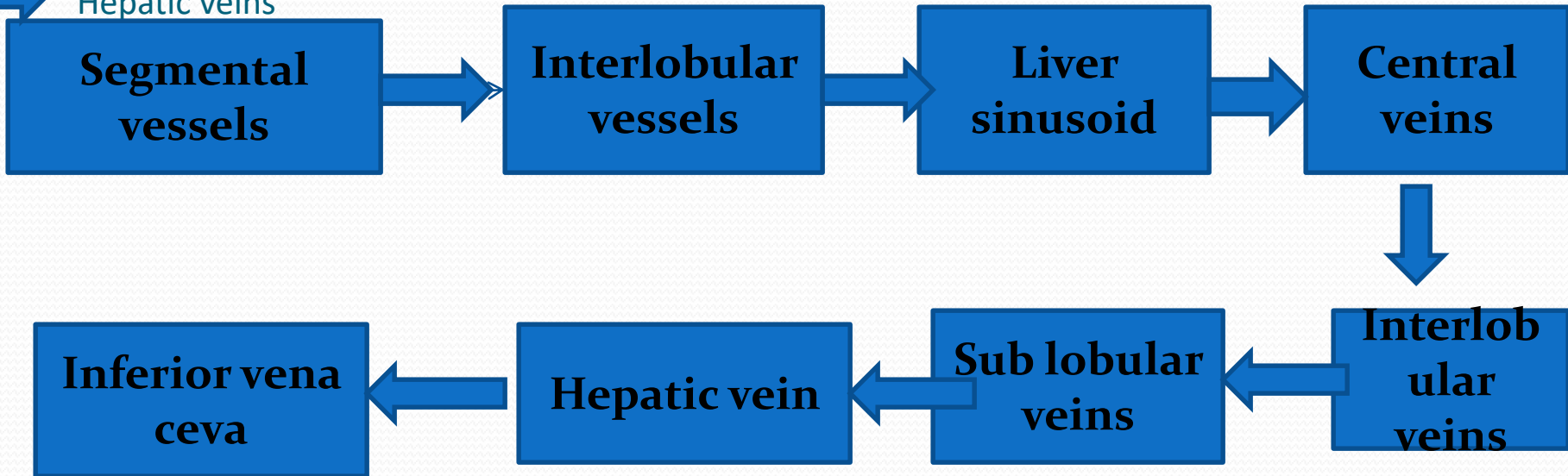
# HEPATIC BLOOD CIRCULATION

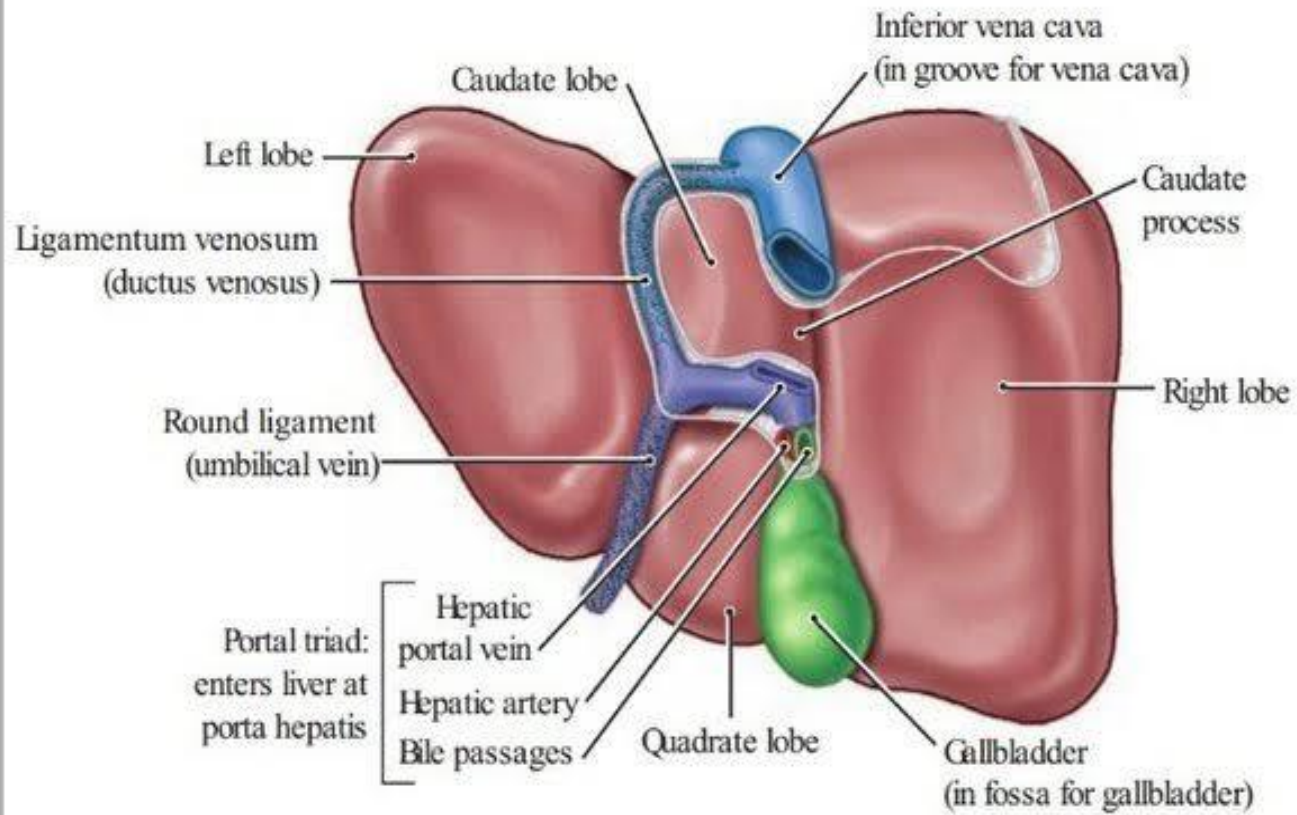
Circulation to liver consists of

➔ Hepatic artery(30%)

➔ Portal vein(70%)

➔ Hepatic veins



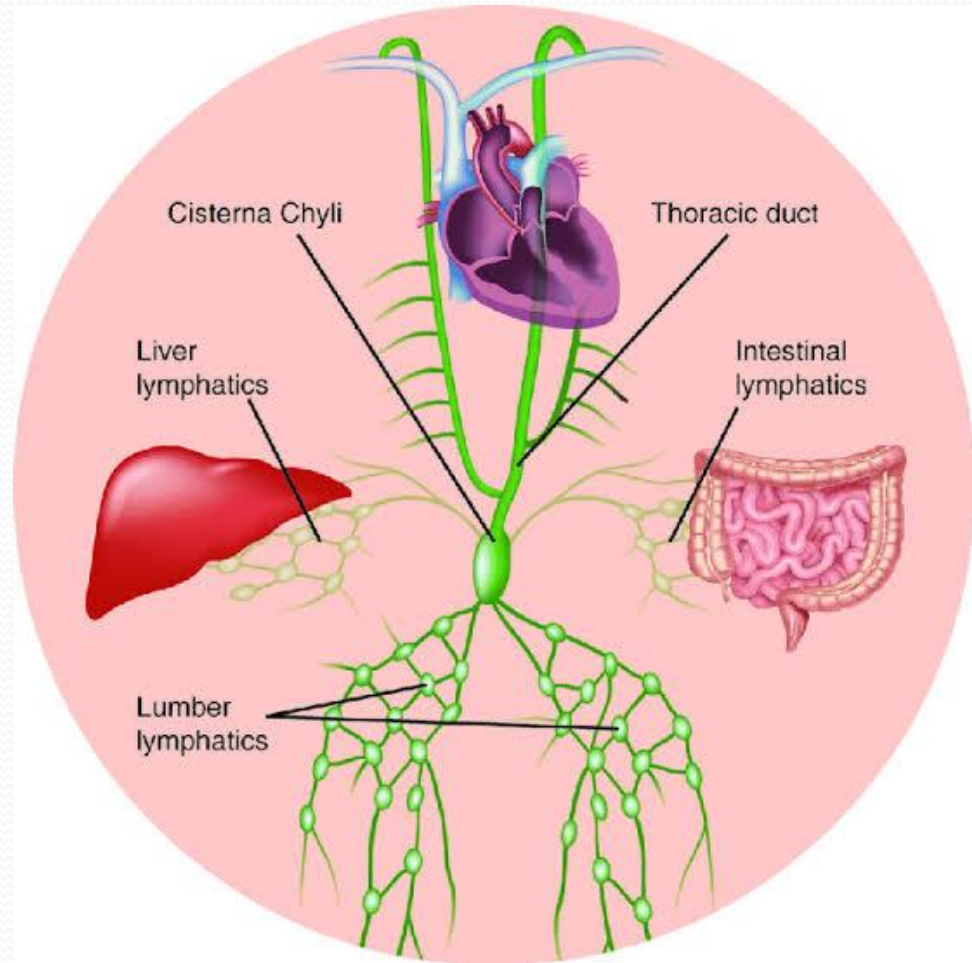


C. Postero-inferior View

# LYMPH DRAINAGE

- Anterior aspect of liver → hepatic lymph nodes → colic lymph nodes → cisternachyli(thoracic duct)

- Posterior aspect of liver → posterior mediastinal nodes right lymphatic duct.



# NERVE SUPPLY

- Parenchyma of liver is innervated by hepatic plexus
- Contains both sympathetic and parasympathetic supply derived from splanchnic and vagal supply
- Glisson's capsule is innervated by lower intercostal nerves

