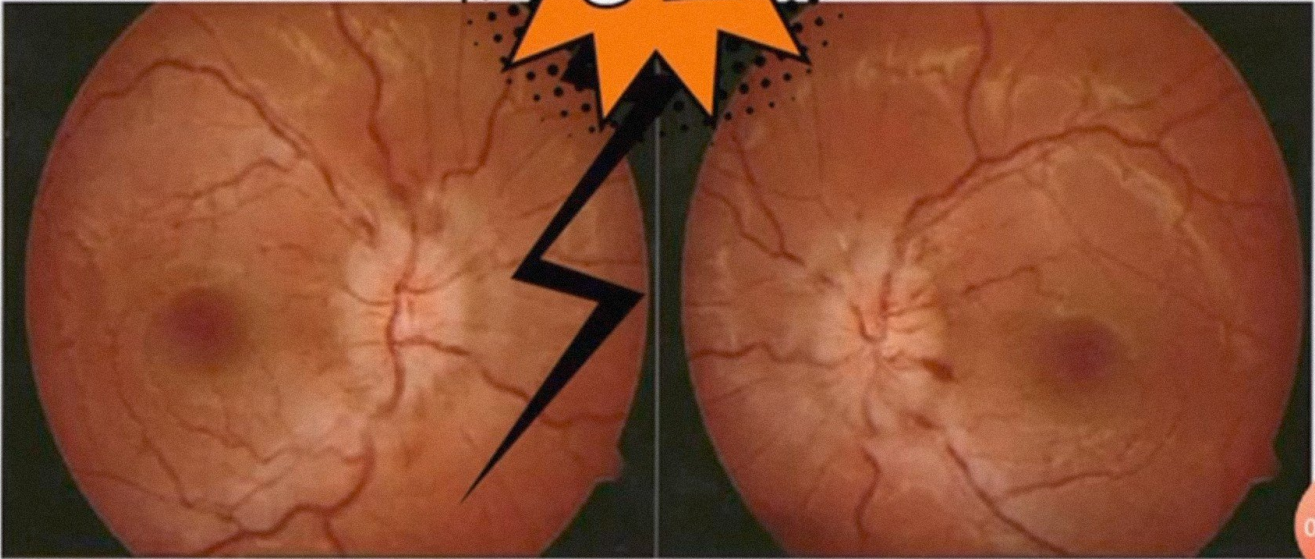




PAPILLITIS VS PAPPILLEDEMA



00:00:06

SCREEN RECORDER



HISTORY

PAPILLITIS: Rapid vision loss preceded with respiratory infection or fever

VS

PAPILLEDEMA : headache and vomiting



PRESENTATION

PAPILLITIS IS UNILATERAL

VS

PAPILLEDEMA IS BILATERAL



VISION

SUDDEN and SEVERE LOSS
OF VISION.

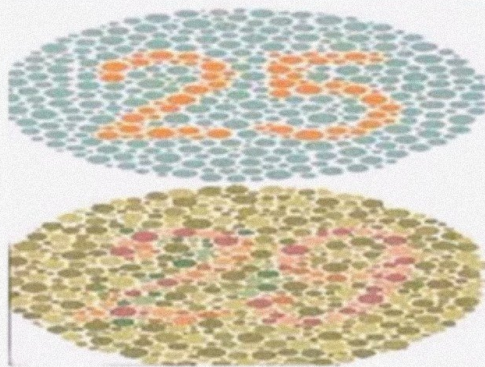
VS

UNIMPAIRED INITIALLY



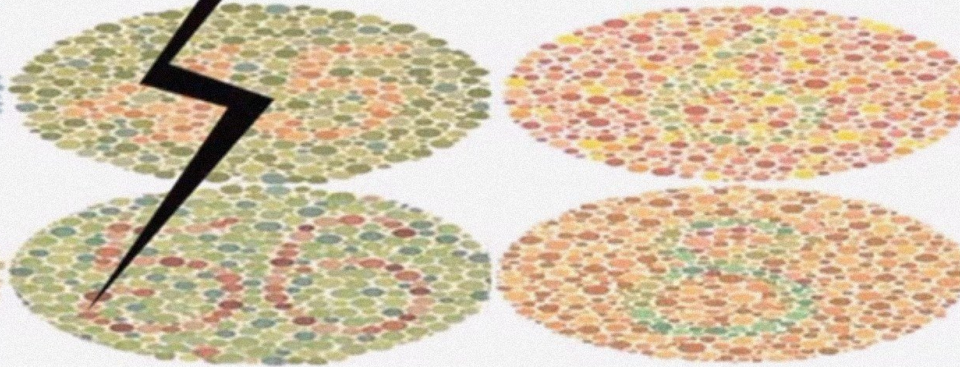
COLOR VISION

PAPILLITIS : affected



VS

PAPILLEDEMA : not affected





Red
desaturation



SCREEN
RECORDER

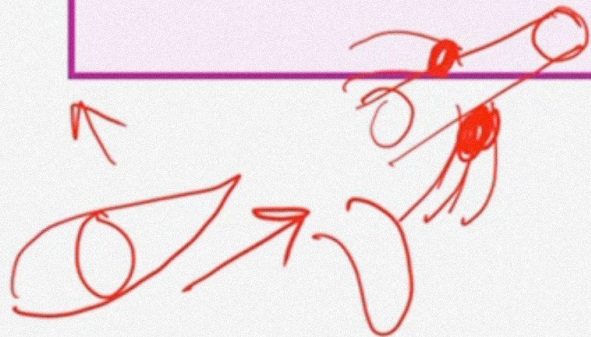


PAIN / TENDERNESS

PRESENT IN PAPILLITIS

VS

ABSENT IN PAPPILLEDEMA



PUPIL

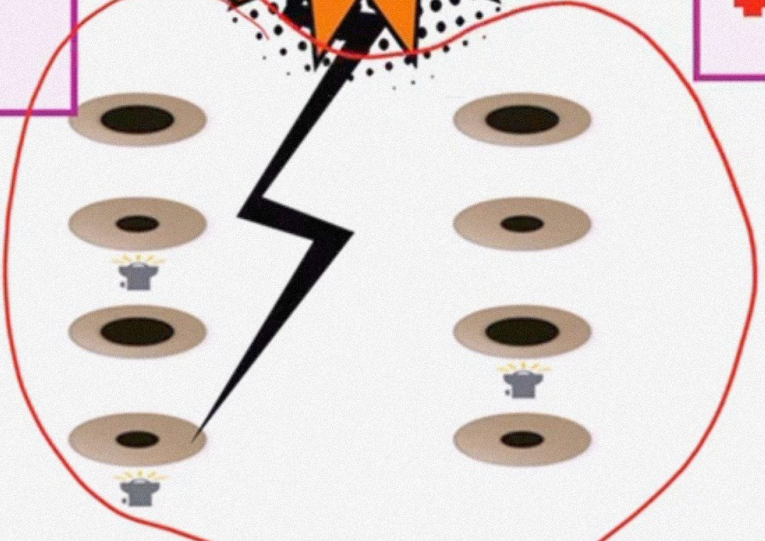
demyelination

RAPD is Present



VS

RAPD is absent initially
+



MEDIA

Hazy near the
posterior vitreous

VS

MEDIA IS CLEAR



HEMORRHAGES AND EXUDATES

LESS or ABSENT IN
PAPILLITIS

VS

MORE especially in advanced
PAPILLEDEMA

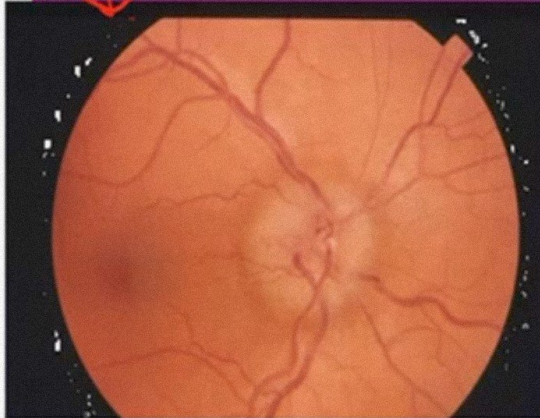


SCREEN
RECORDER



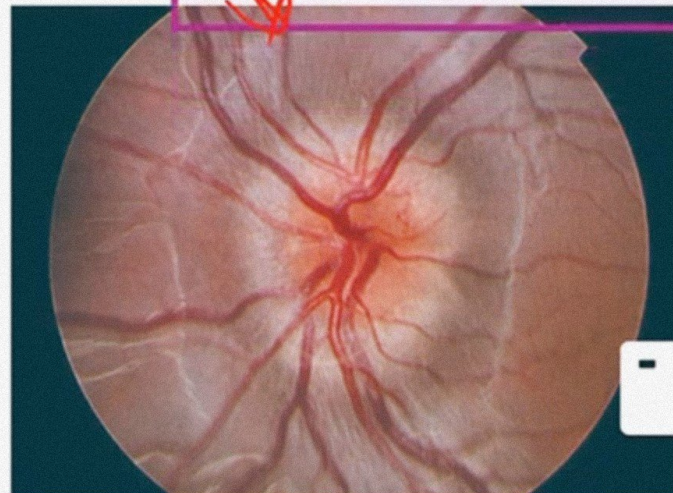
DISC SWELLING

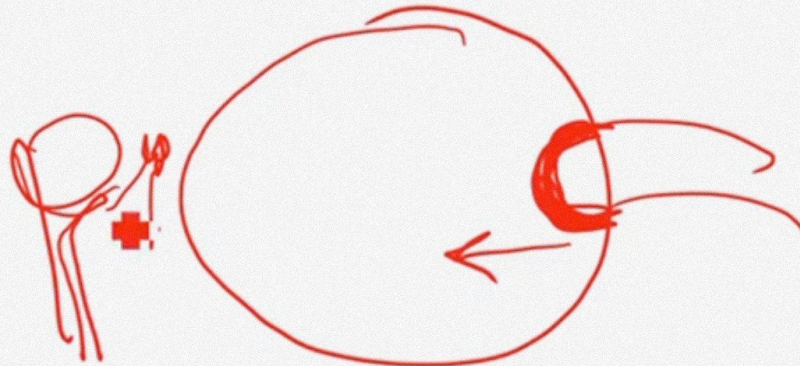
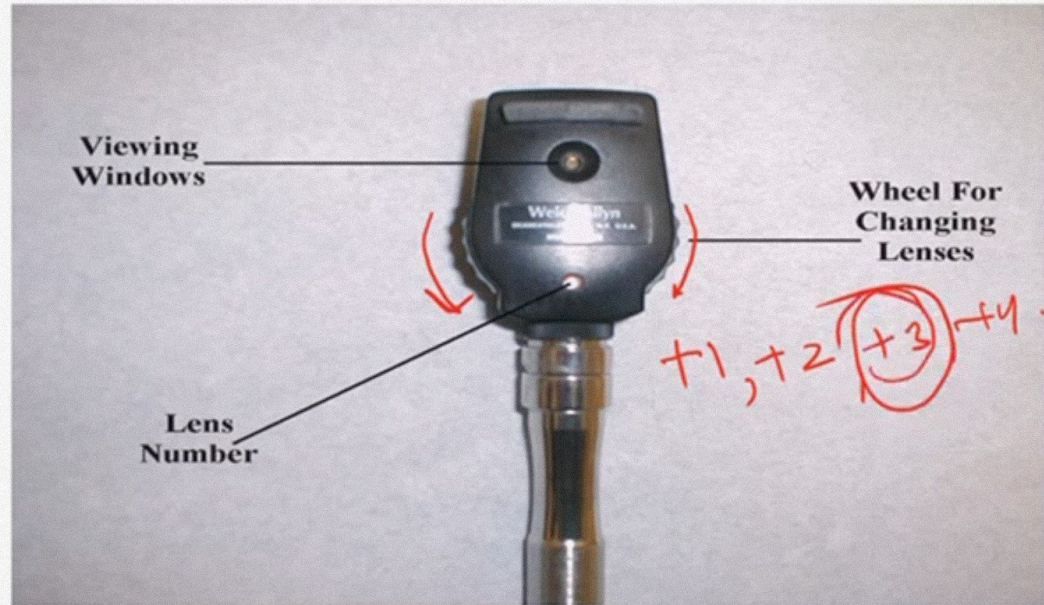
+2 to +3 D



VS

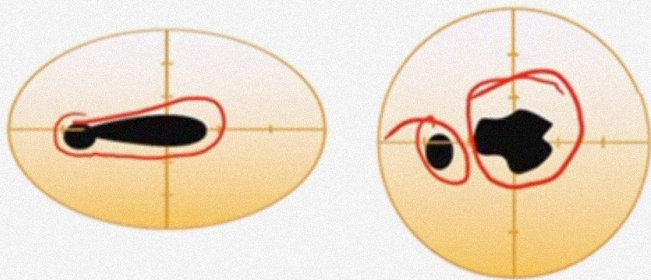
More than 3 D





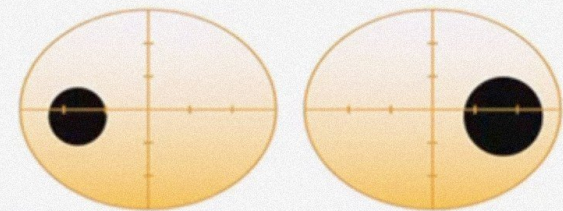
VISUAL FIELDS

Central or centrocaecal
scotoma



VS

ENLARGED BLIND SPOT,
LATER gradual constriction of
fields



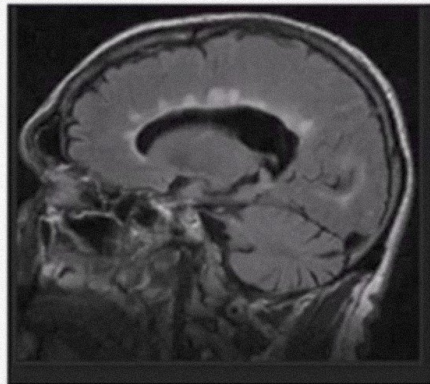
(a) Enlarged blind spots (e.g. papilloe)

SCREEN
RECORDER



CT / MRI

PAPILLITIS USUALLY
SHOWS DEMYELINATION



VS

PAPILLEDEMA : CAUSES OF
RAISED ICT SEEN **+**



VEP (VISUAL EVOKED POTENTIAL)

DECREASED IN AMPLITUDE
AND LATENCY BOTH



VS

NORMAL

	PAPILLITIS	PAPILLEDEMA
HISTORY	Prior fever or infection	Headache and Vomitting
LATERALITY	Unilateral	Bilateral
VISION	Sudden loss, severe	Mild loss, gradual
COLOR VN	Affected	Not Affected
PAIN	On movement of eye	none
PUPIL	RAPD	normal
MEDIA	May be hazy	Normal
HEMORRHAGES AND EXUDATES	Mild	Severe present
DISC SWELLING	Less than +3 D	May be more than +3 D
VISUAL FIELDS	Central or centrocaecal	Enlargement of blindspot
CT/ MRI	Demyelination	Hydrocephalous, Space occupying lesion



00:00:30 SCREEN RECORDER

