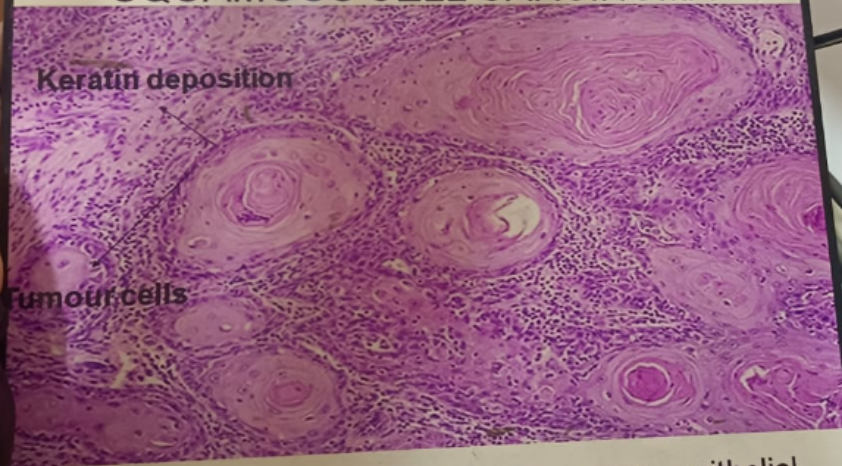


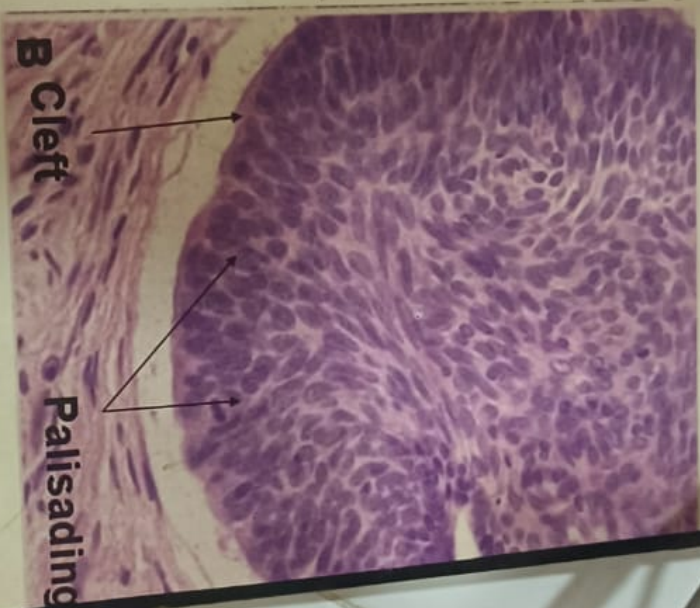
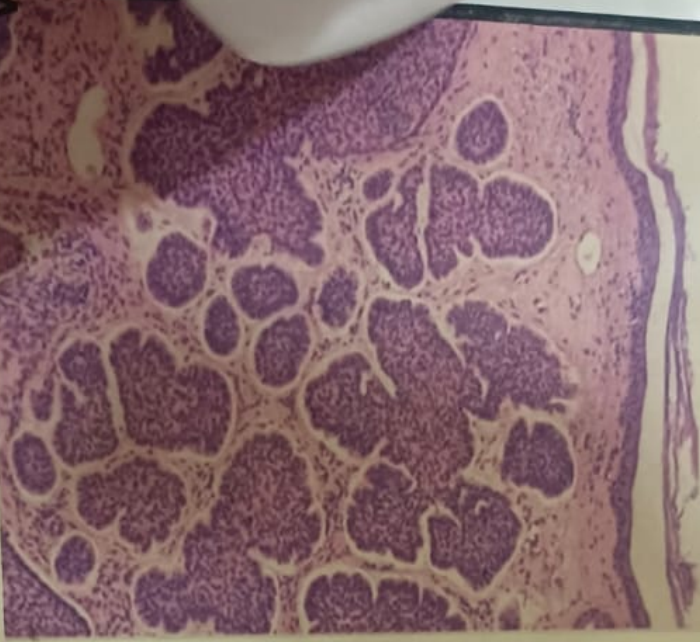
SQUAMOUS CELL CARCINOMA



Note the disorderly growth of the squamous epithelial cells in these large nests with pink keratin in the centers.

Saira Jabeen

BASAL CELL CARCINOMA



- A. Multiple islands of basaloid cells infiltrating a fibrotic stroma.
- B. The cells have scant cytoplasm, dark-stained nuclei, palisading and a typical cleft like space. *Madina Gul*

CAUTION
Laser Hazard
Class II Laser Product
Do Not Stare
Do Not Reflect
CE
FCC
UL
MADE IN CHINA



neutrophil

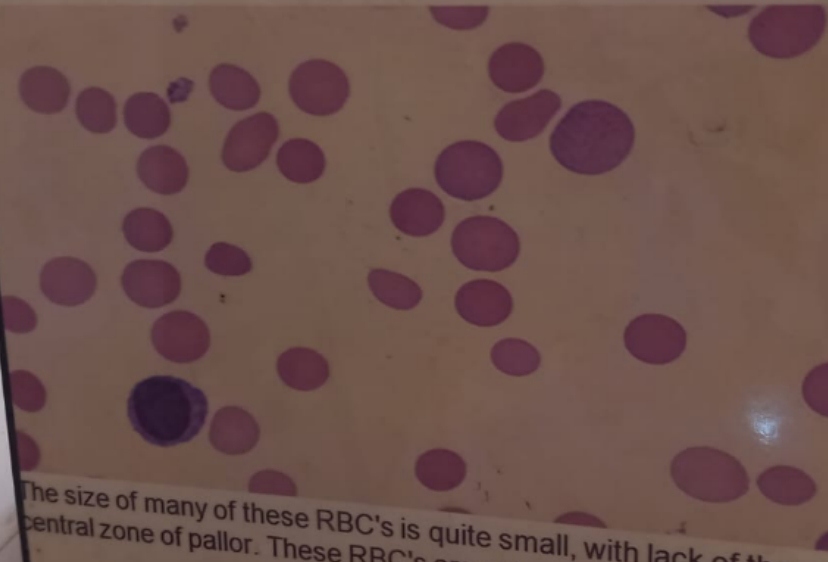
The image shows a microscopic view of a blood smear. In the center, there is a basophil with a dark purple, granular cytoplasm and a lobed nucleus. To the left, there is a neutrophil with a multi-lobed nucleus and light purple granules. The background is filled with numerous red blood cells, which are pinkish-red and biconcave in shape.

Basophil

There is a basophil in the center of the field which has a lobed nucleus and numerous coarse, dark blue granules in the cytoplasm. A band neutrophil is seen on the left.

Palwasha Ayaz

HEREDITARY SPHEROCYTOSIS



The size of many of these RBC's is quite small, with lack of the central zone of pallor. These RBC's are spherocytes.

licular pattern

licular

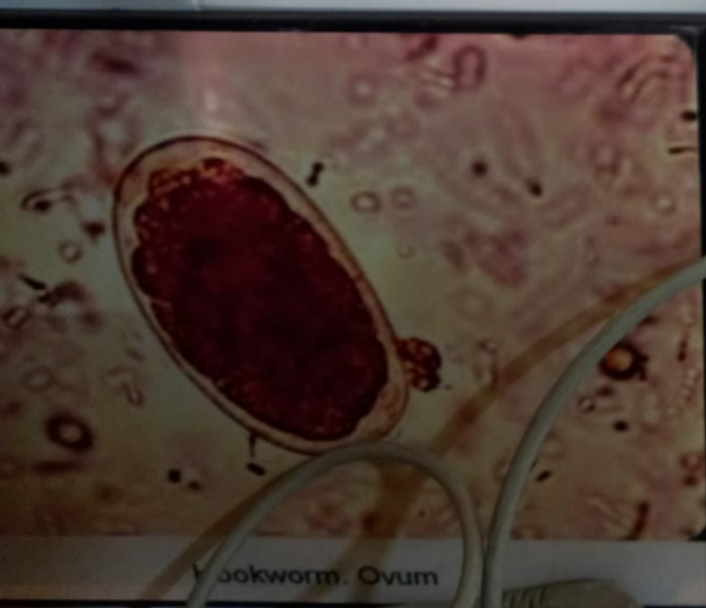
ts

PERICANALICULAR FIBROADENOMA



Low-power microscopic view of a fibroadenoma of the breast showing the discrete margins (arrow) and the intracanalicular and pericanalicular patterns. . . Aniq sarfraz

pericanalicular patterns

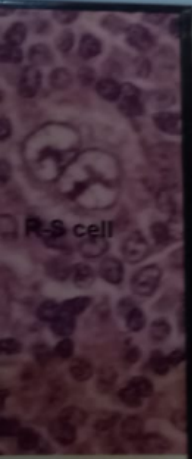




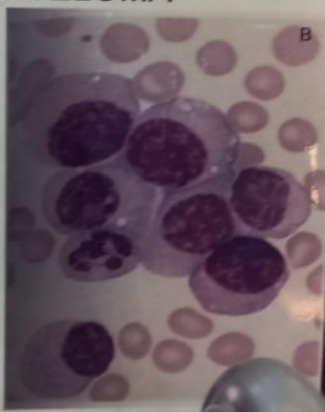
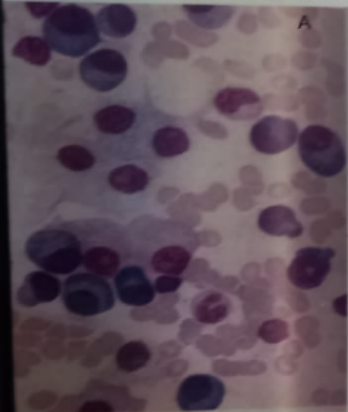
Hymenolepis.nana ovum



MULTIPLE MYELOMA

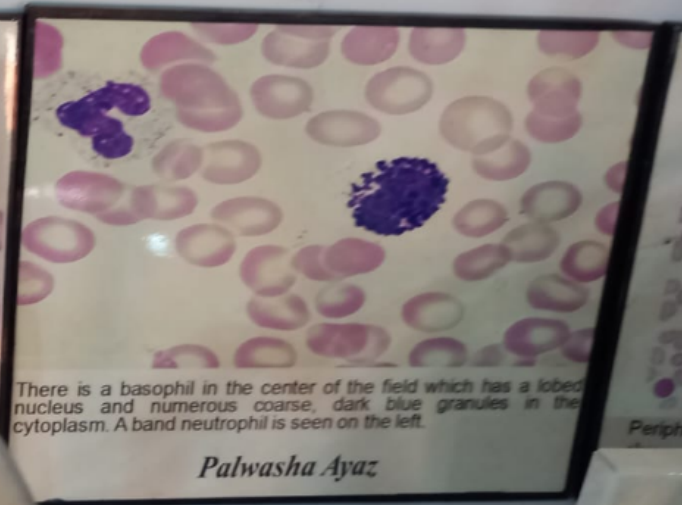


h node biopsy



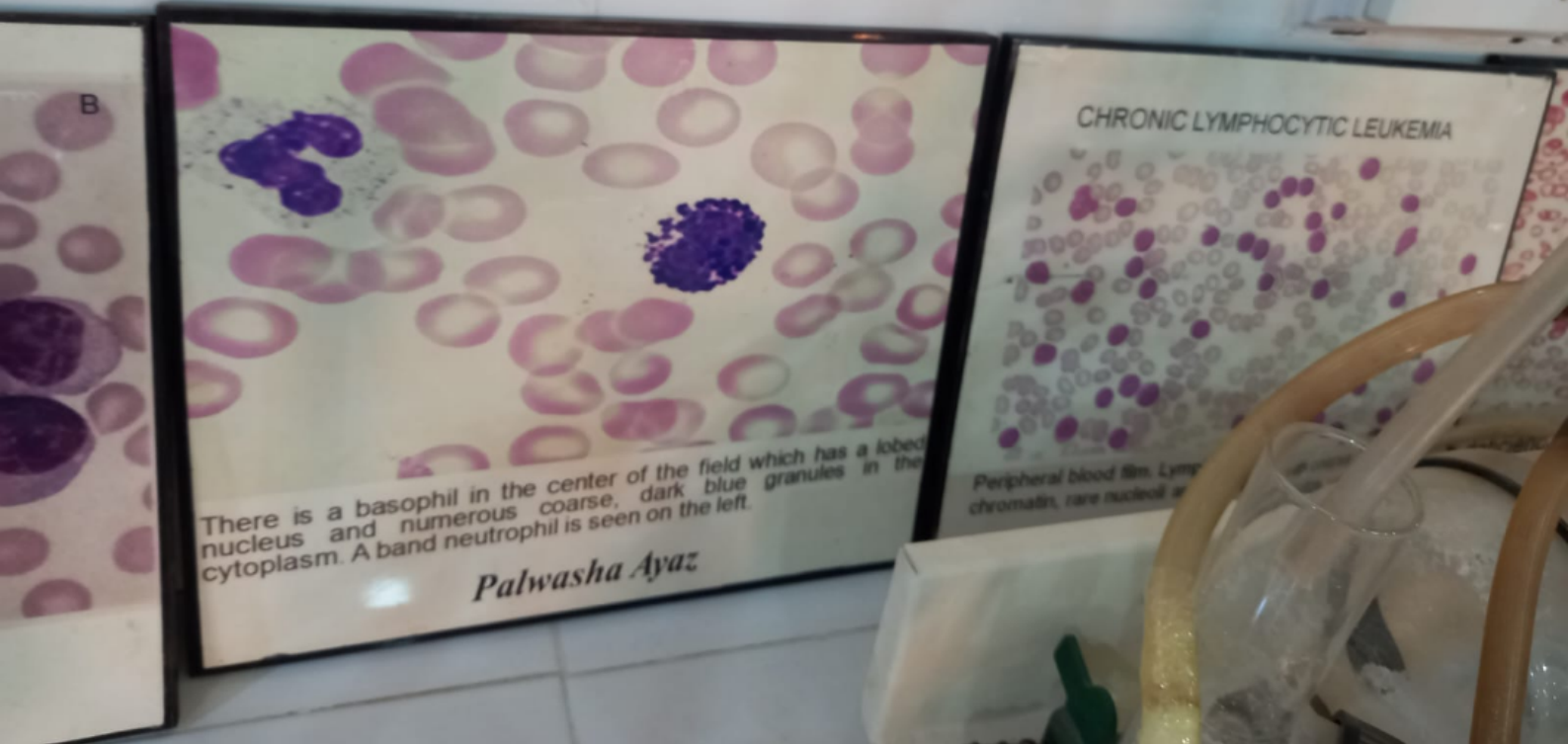
A. Trehine biopsy B. Peripheral smear

Sania Nausheen Khattak & Kalsom Begum



Palwasha Ayaz

Periphera

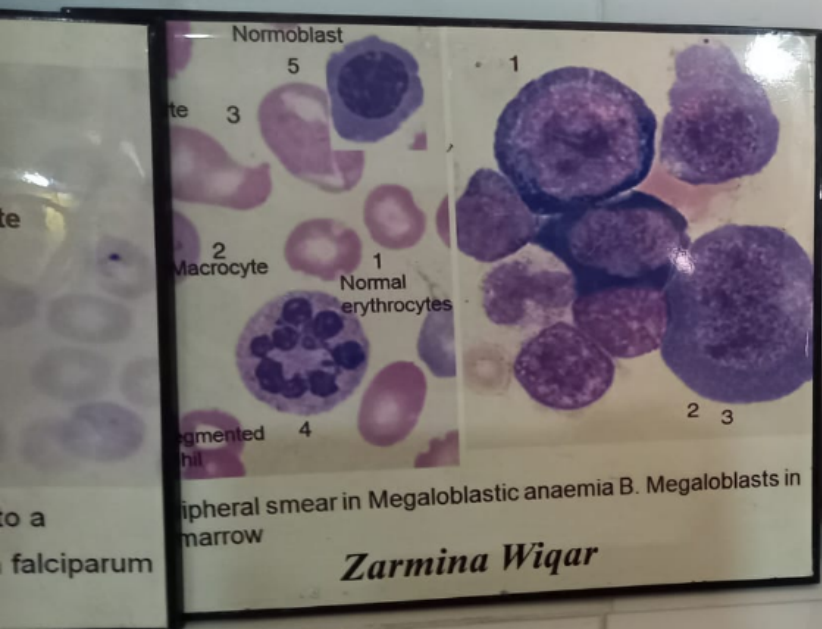


There is a basophil in the center of the field which has a lobed nucleus and numerous coarse, dark blue granules in the cytoplasm. A band neutrophil is seen on the left.

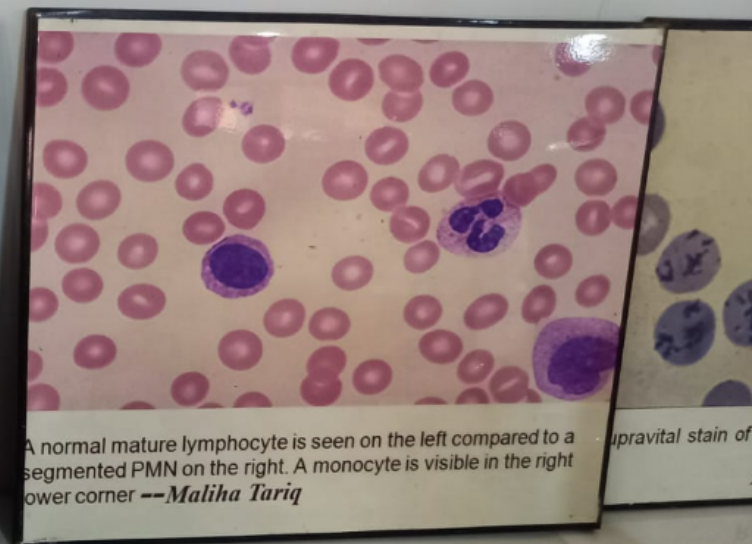
Palwasha Ayaz

CHRONIC LYMPHOCYTIC LEUKEMIA

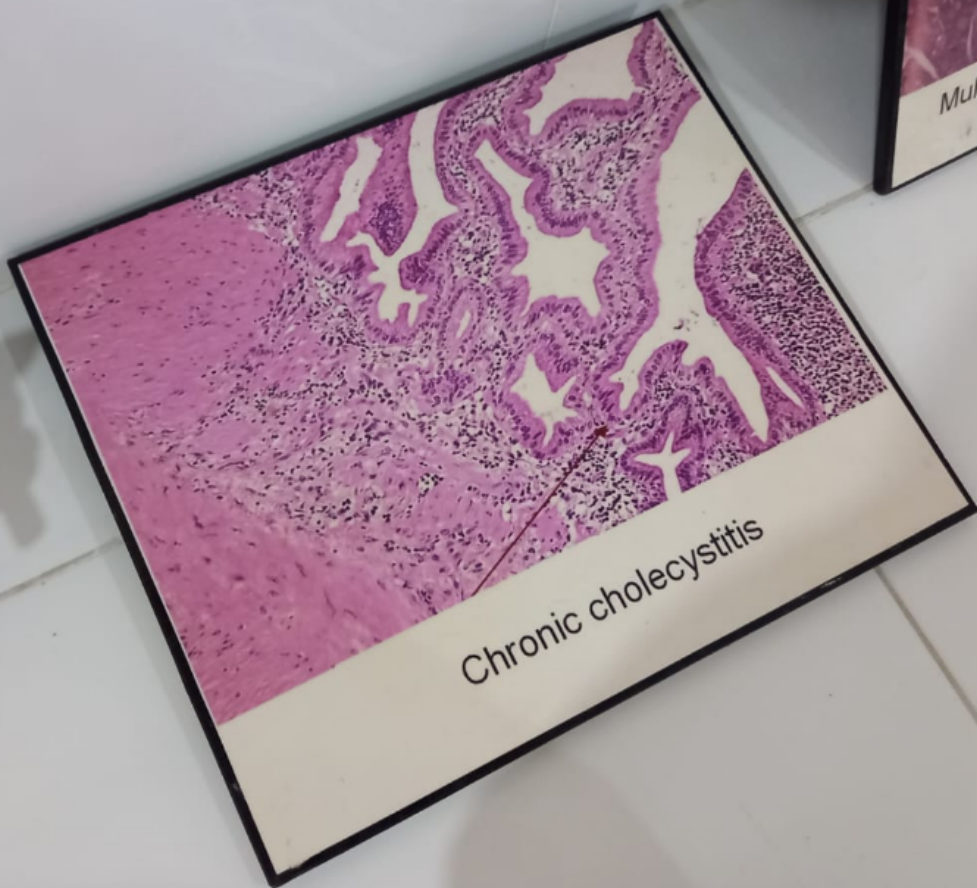
Peripheral blood film. Lymphocytes with high nuclear to cytoplasmic ratio, rare nuclei with clumped chromatin, rare nucleoli.



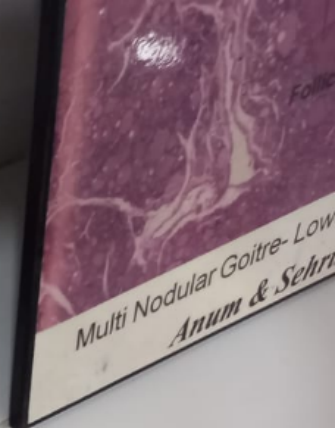
Zarmina Wiqar



Supravital stain of

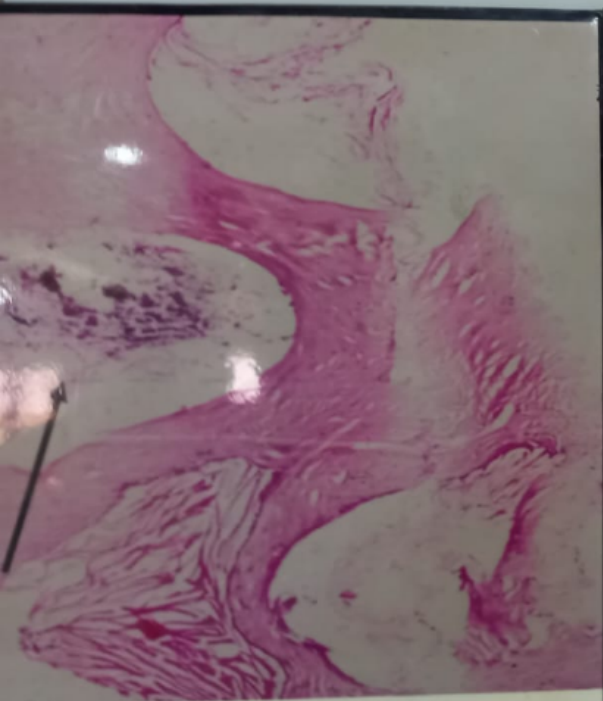


Chronic cholecystitis



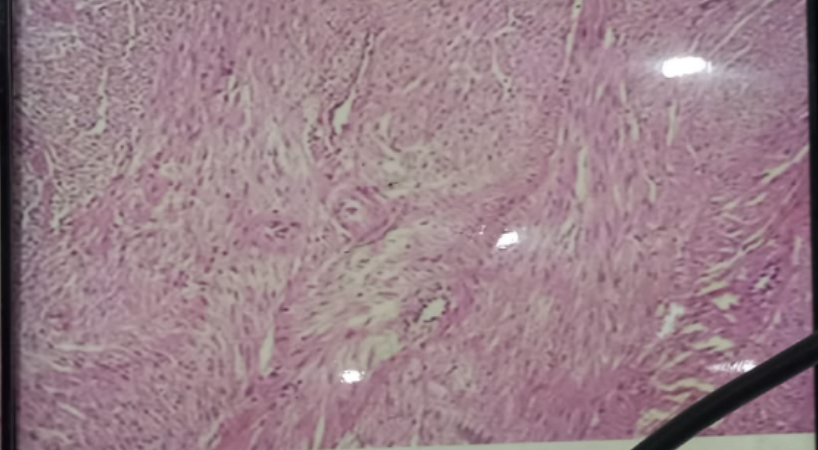
Multi Nodular Goitre- Low
Anum & Sehri





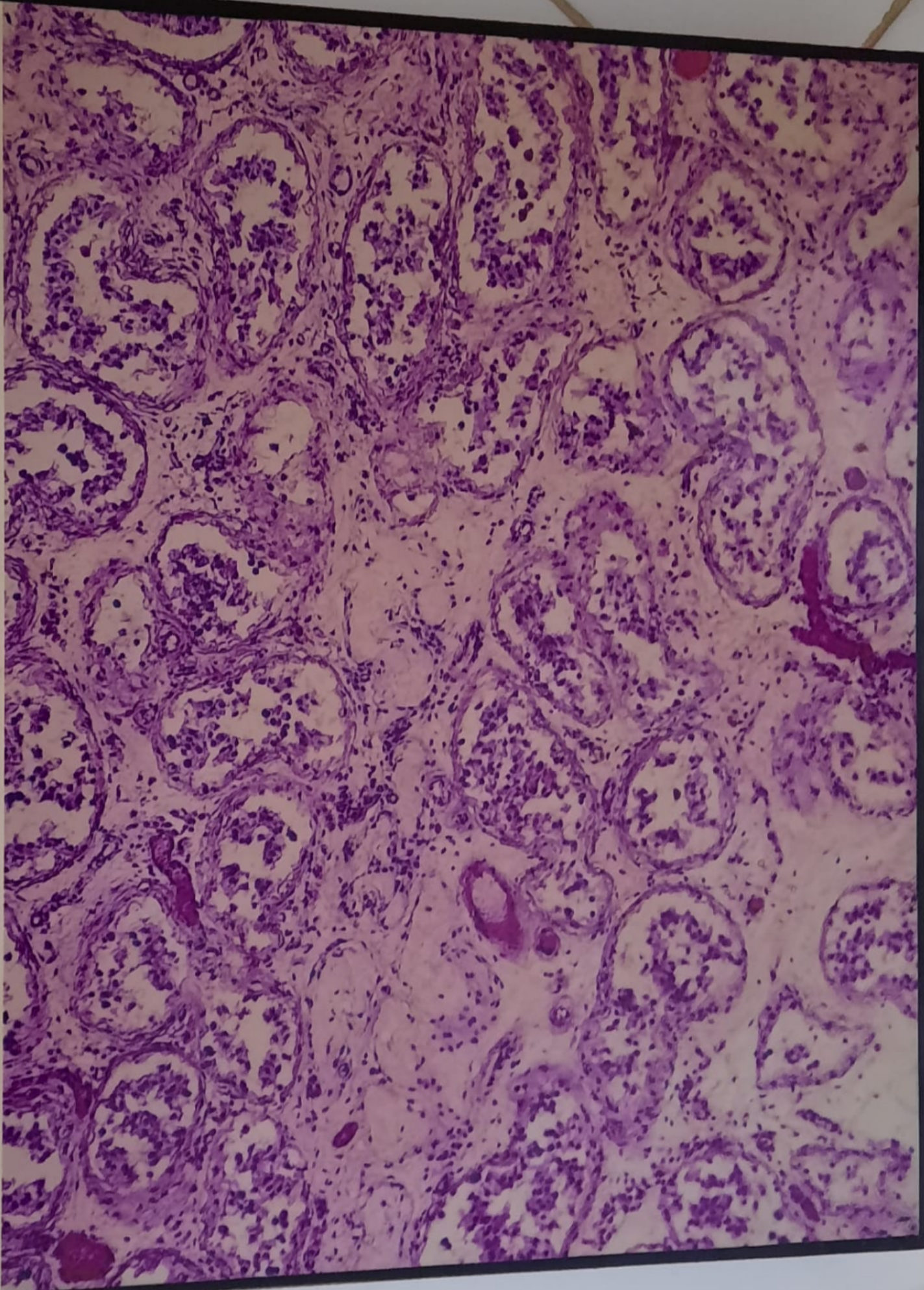
Biological Calcification

LEIOMYOMA UTERUS MEDIUM POWER

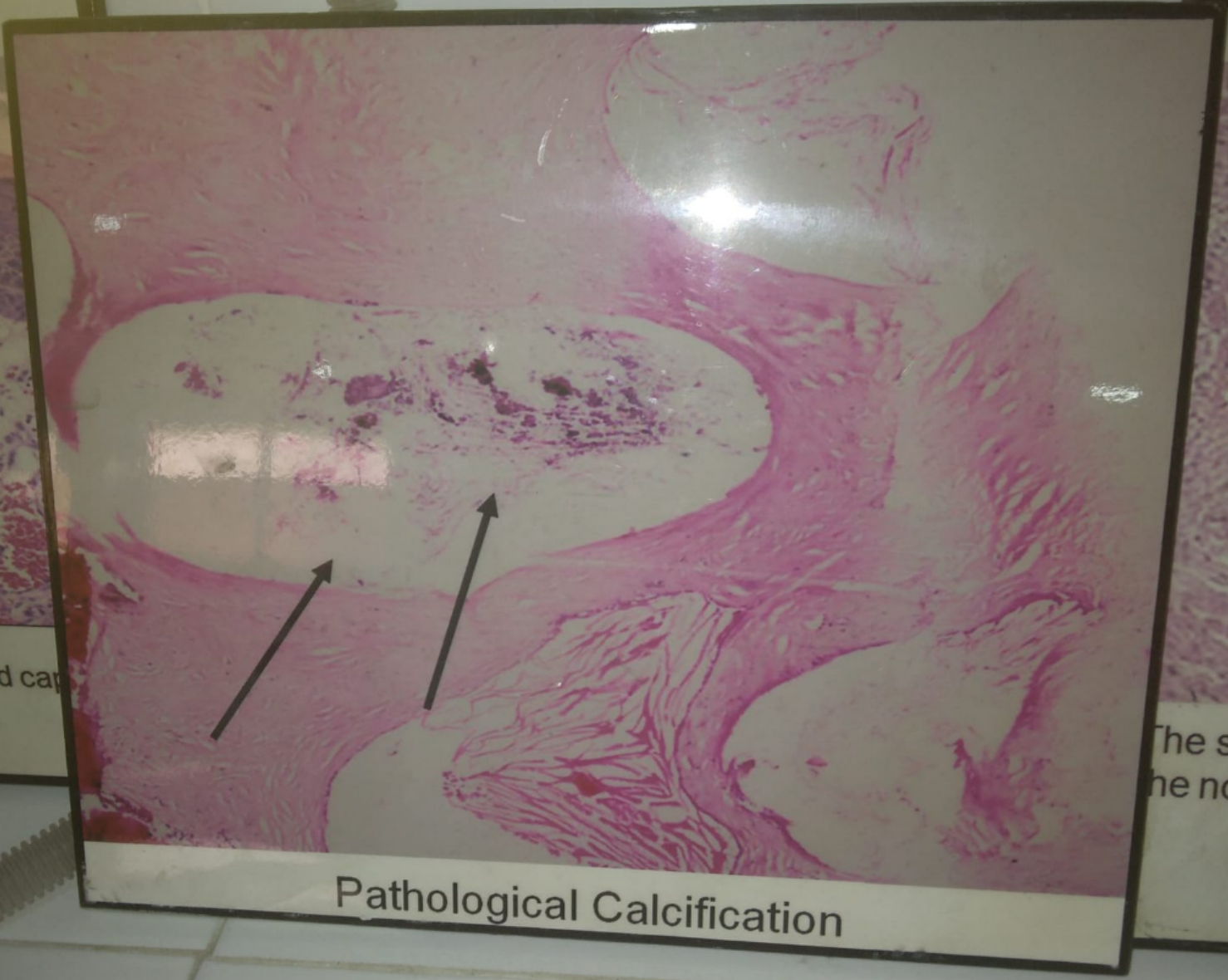


The smooth muscle tissue of the leiomyoma is almost identical to the normal smooth muscle of the uterine wall.

Nasra & Sa...



Testicular atrophy



Pathological Calcification

filled cap

The sm
he nor



Chronic cholecystitis with gall stones

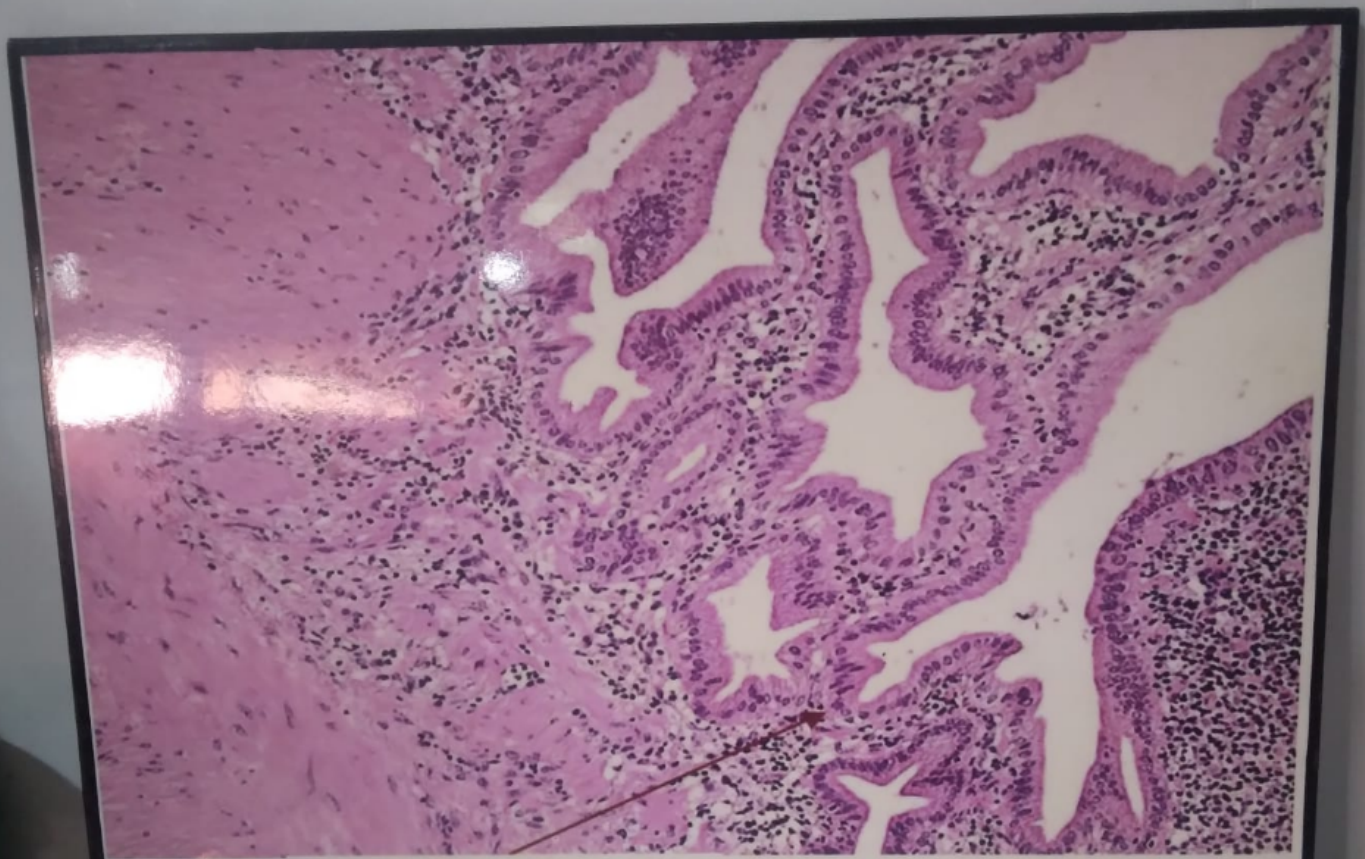
PLASMODIUM FALCIPARUM

Trophozoite

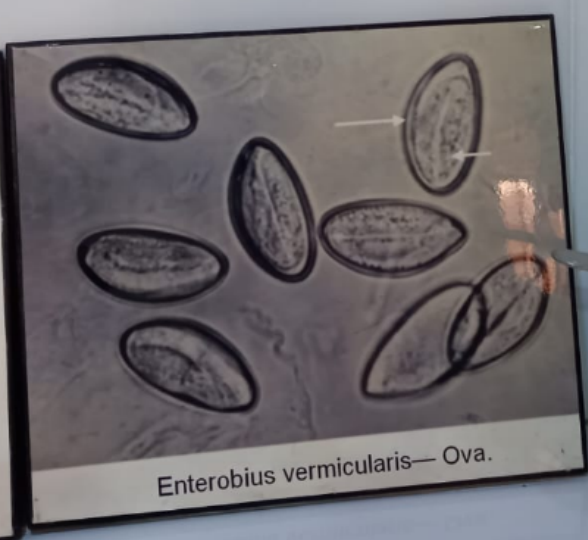
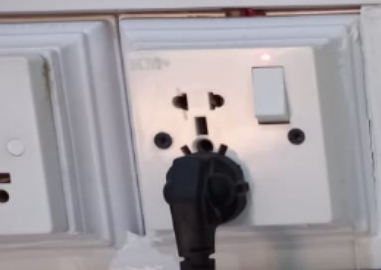


Gametocyte and Trophozoites. Arrow points to a "banana-shaped" gametocyte of Plasmodium falciparum

Sania Nosheen



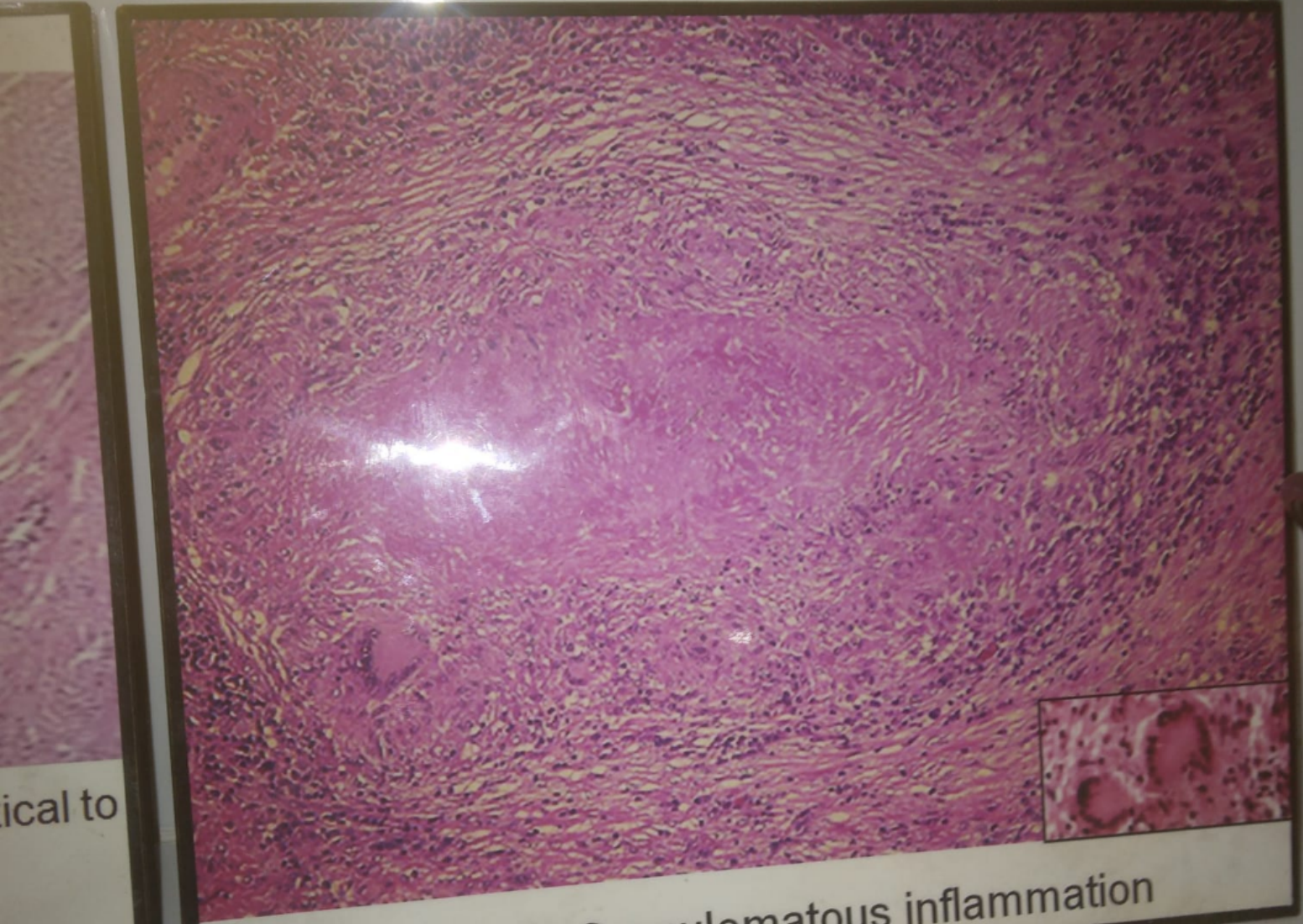
Chronic cholecystitis





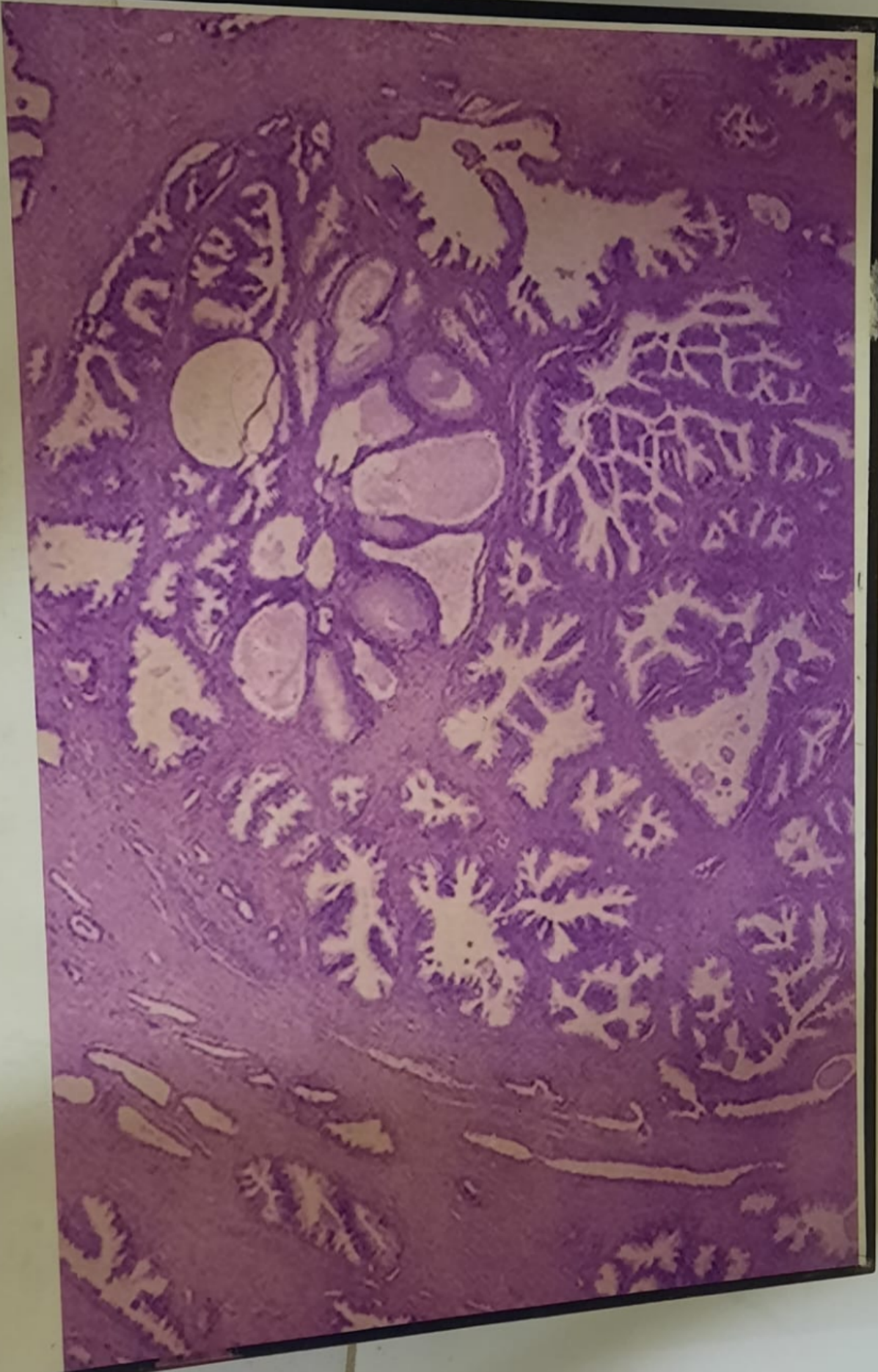
Testicular atrophy





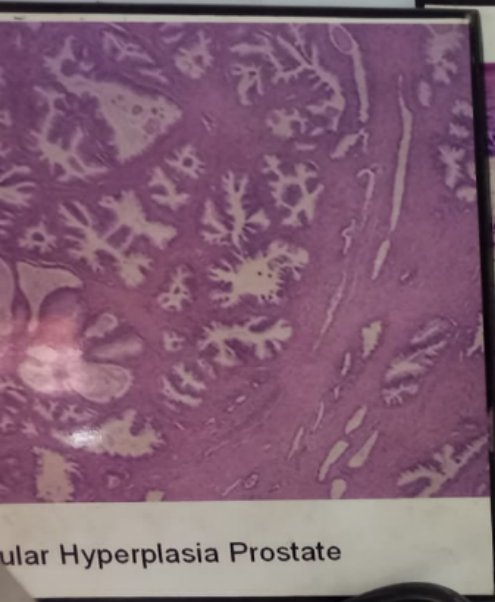
Chronic Granulomatous inflammation

ical to

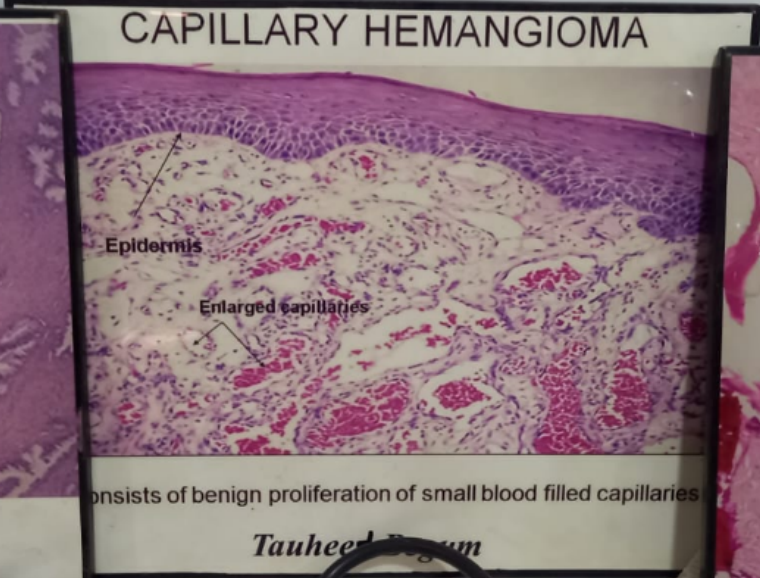


Nodular Hyperplasia Prostate

137

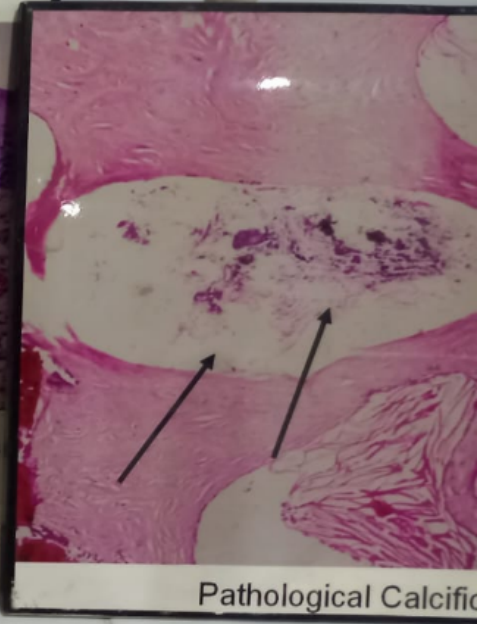


Glandular Hyperplasia Prostate

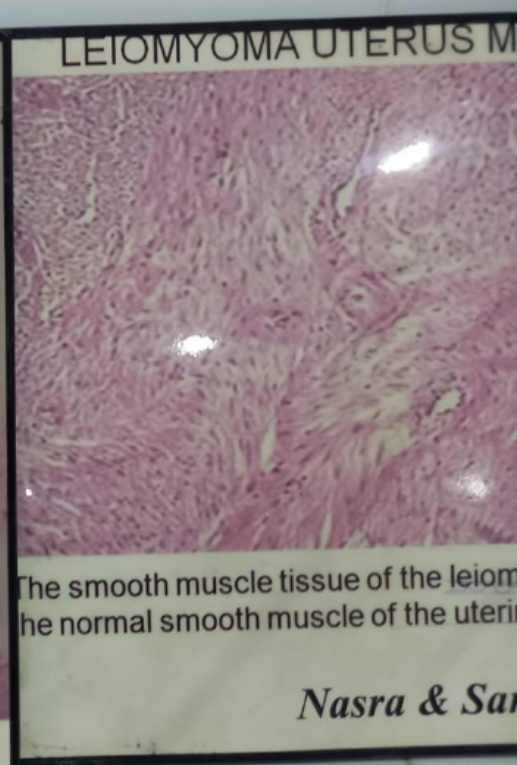


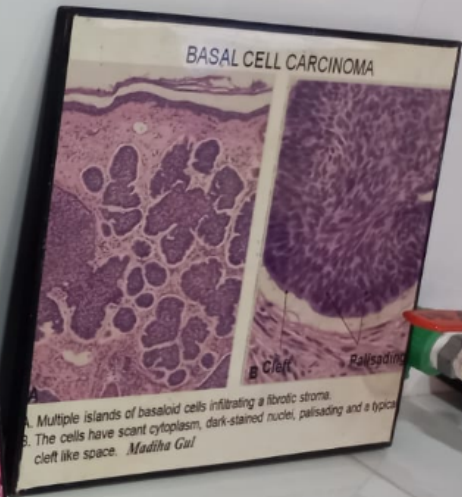
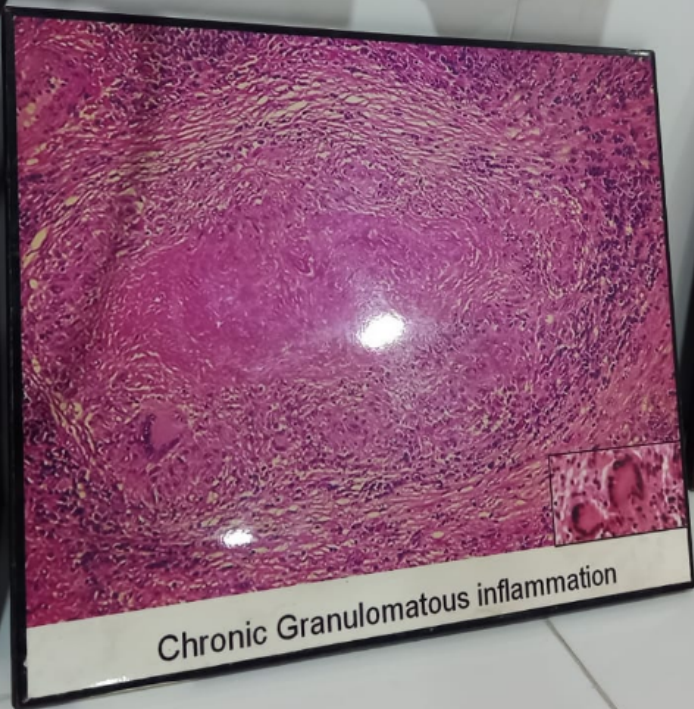
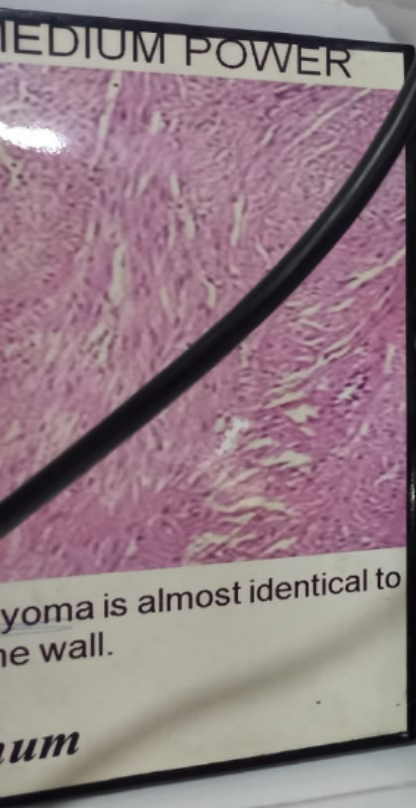
consists of benign proliferation of small blood filled capillaries

Tauheed Begum

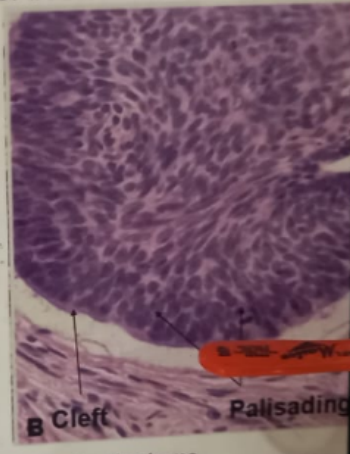
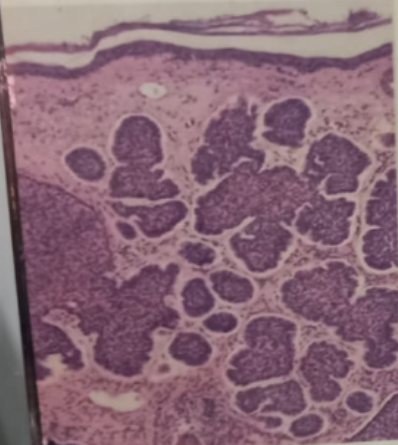


Pathological Calcification

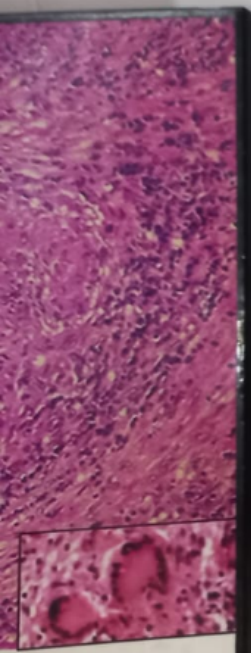




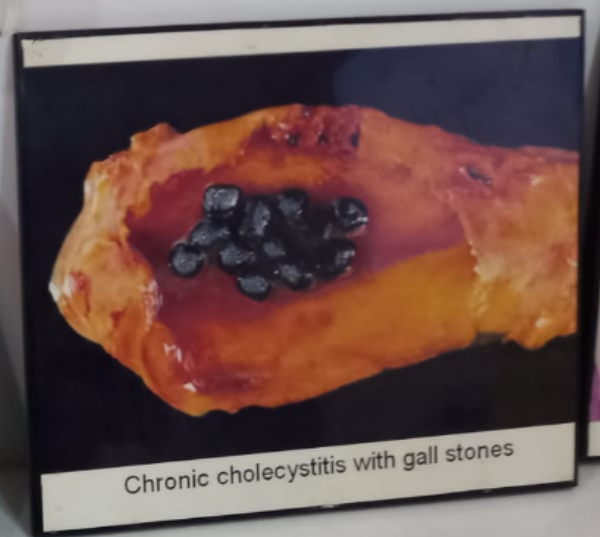
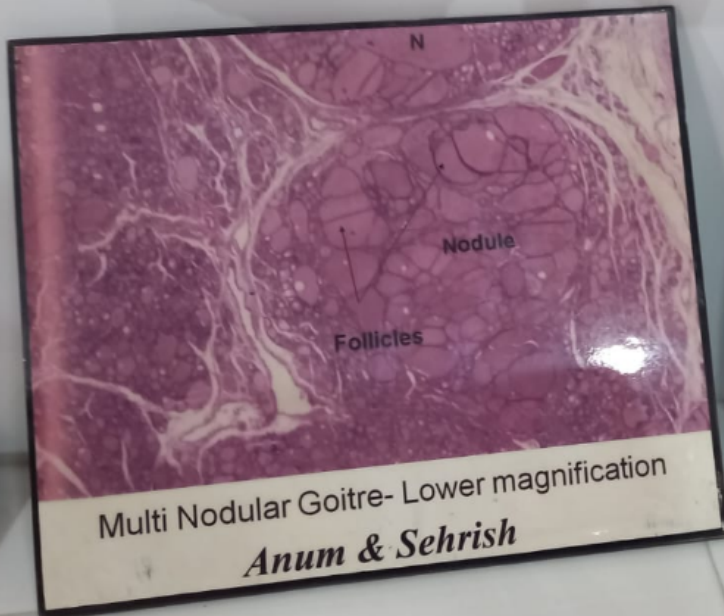
BASAL CELL CARCINOMA

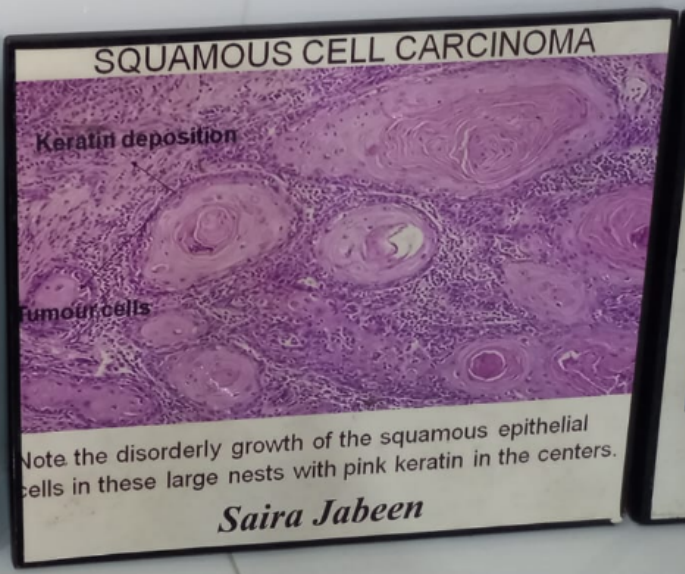
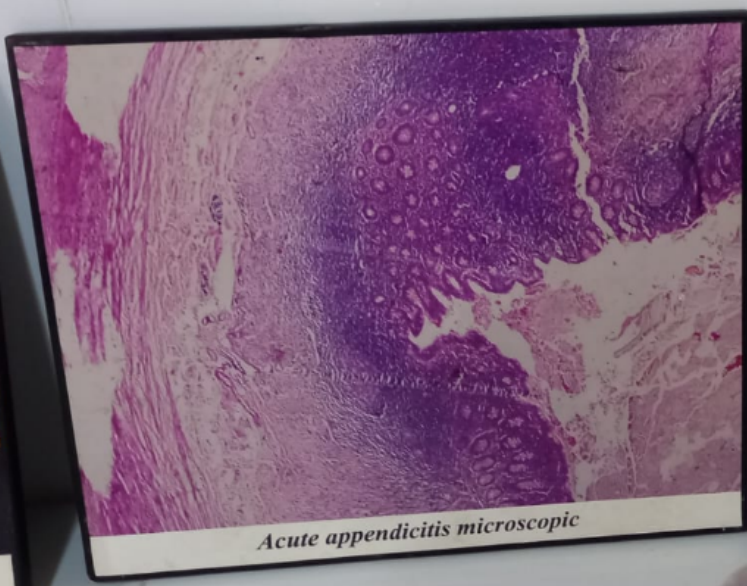


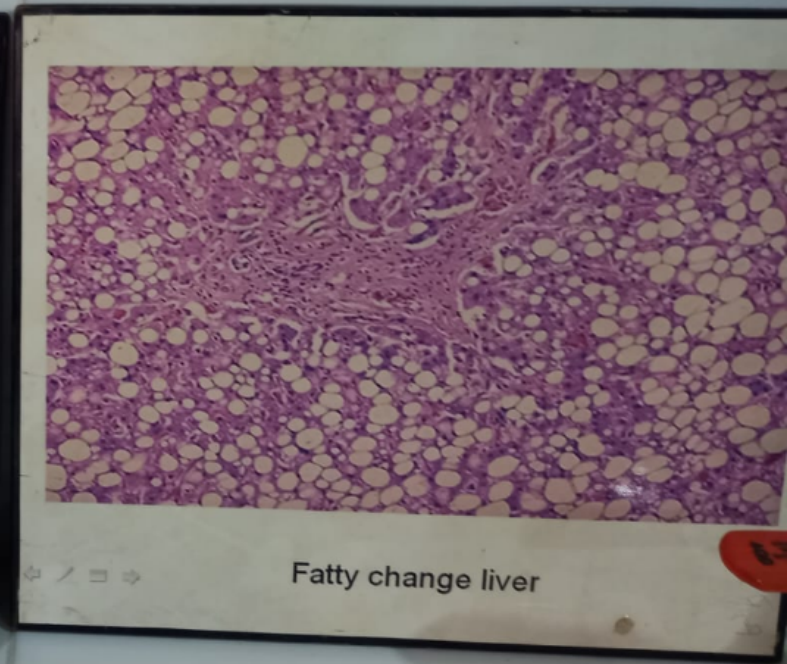
- A. Multiple islands of basaloid cells infiltrating a fibrotic stroma.
- B. The cells have scant cytoplasm, dark-stained nuclei, palisading and a typical cleft like space. *Madiha Gul*



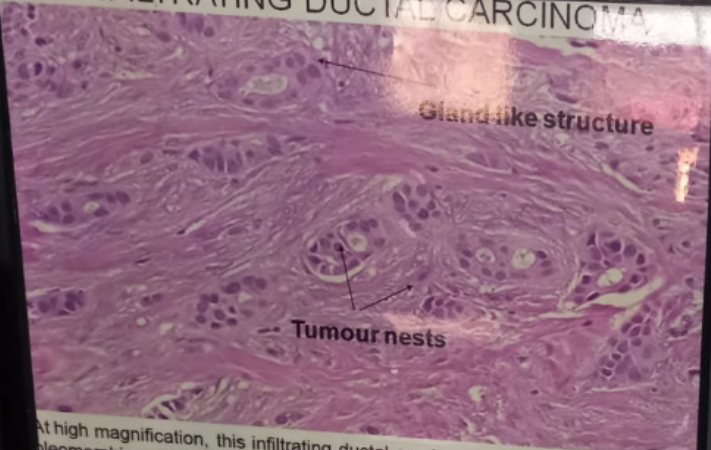
mation







INFILTRATING DUCTAL CARCINOMA



At high magnification, this infiltrating ductal carcinoma of breast has pleomorphic cells forming small nests and irregular glandlike structures. The carcinoma cells infiltrate through the collagenous stroma.

Nazish Iqbal

Distended follicle

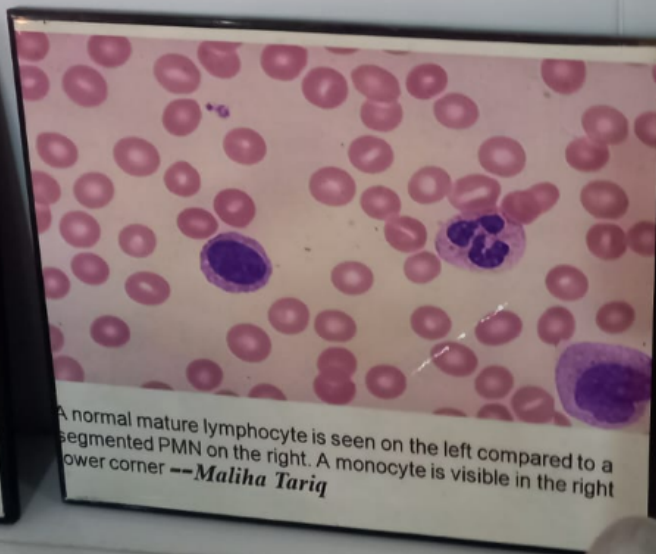


Multi Nodular Goitre- Higher magnification

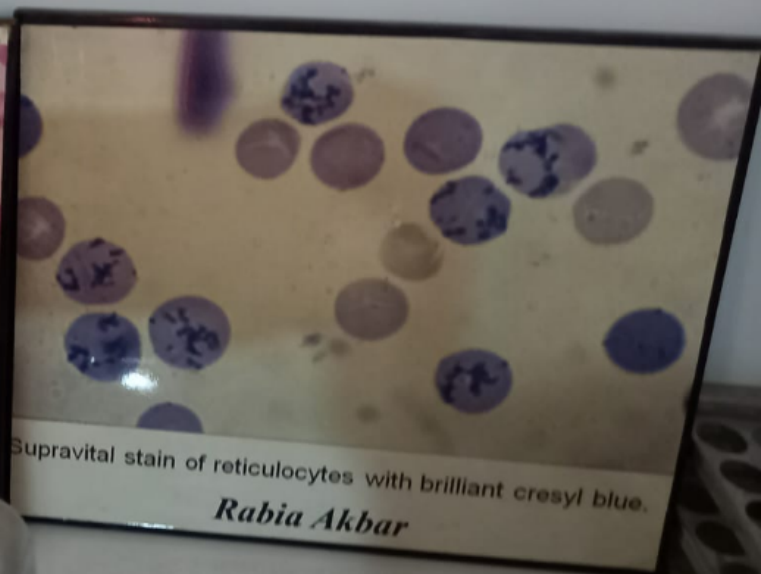
Sehrish & A



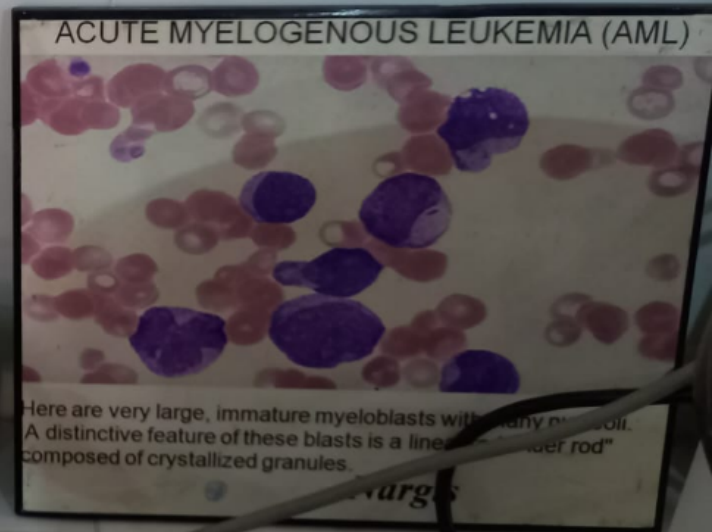
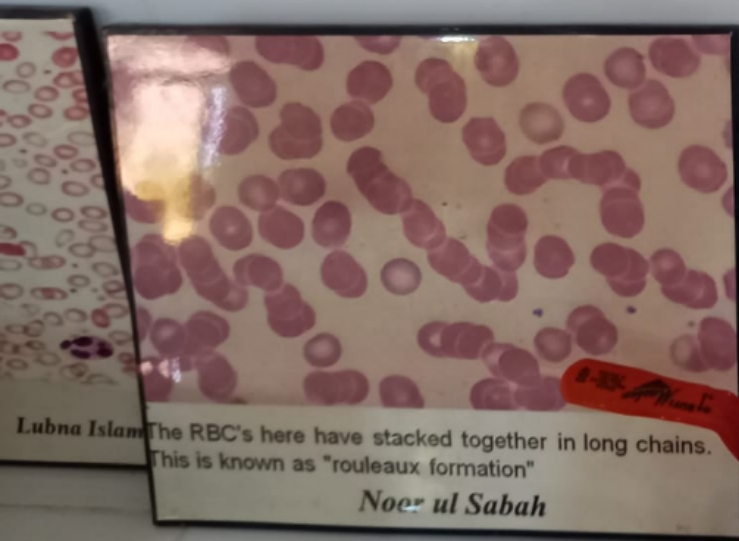
B. Megaloblasts in

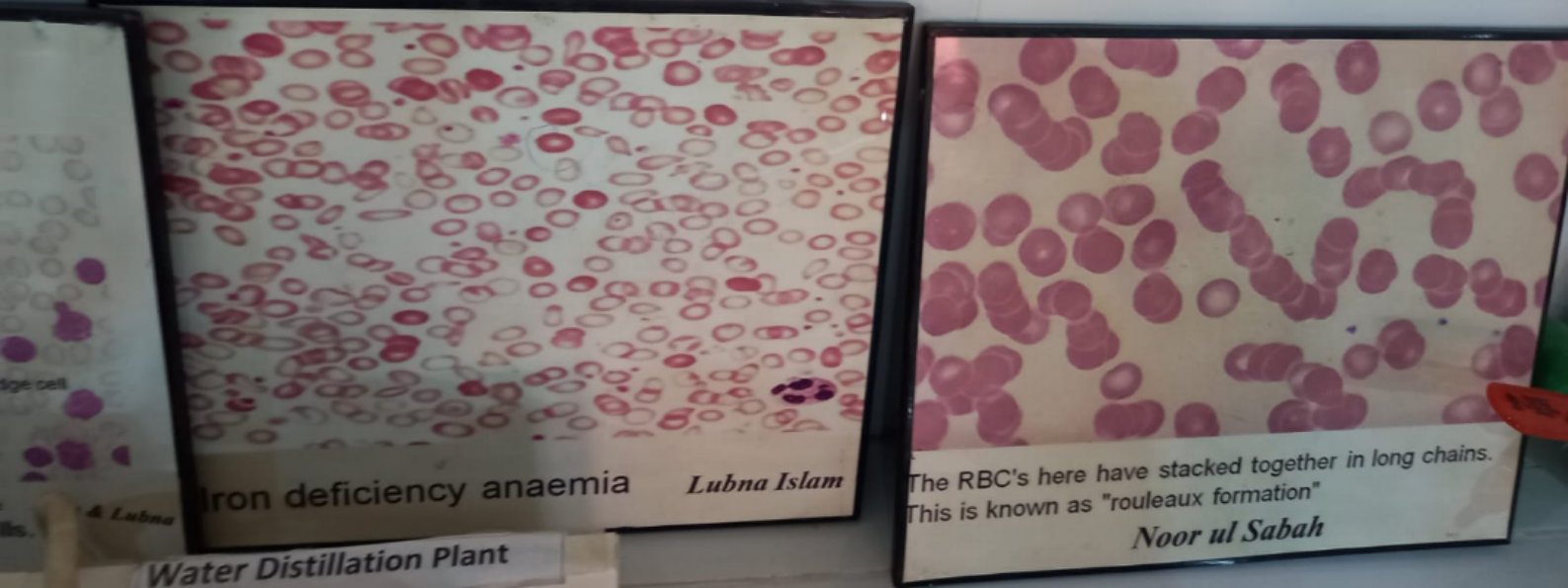


A normal mature lymphocyte is seen on the left compared to a segmented PMN on the right. A monocyte is visible in the right lower corner -- *Maliha Tariq*



Supravital stain of reticulocytes with brilliant cresyl blue. *Rabia Akbar*

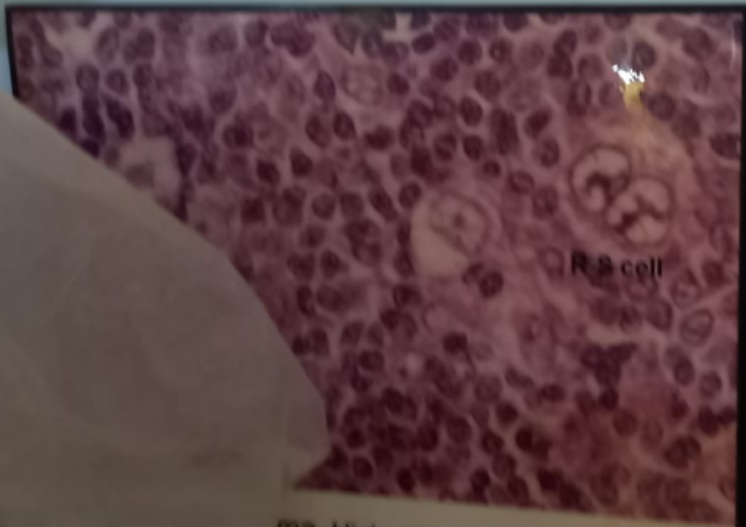




Iron deficiency anaemia *Lubna Islam*

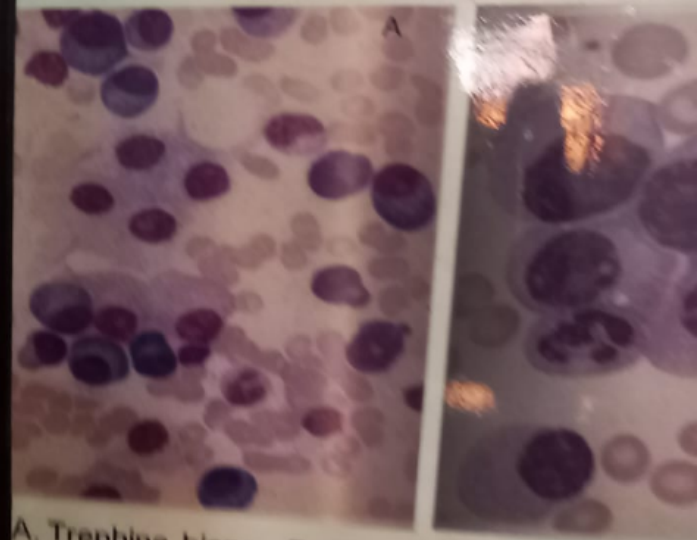
The RBC's here have stacked together in long chains. This is known as "rouleaux formation" *Noor ul Sabah*

Water Distillation Plant



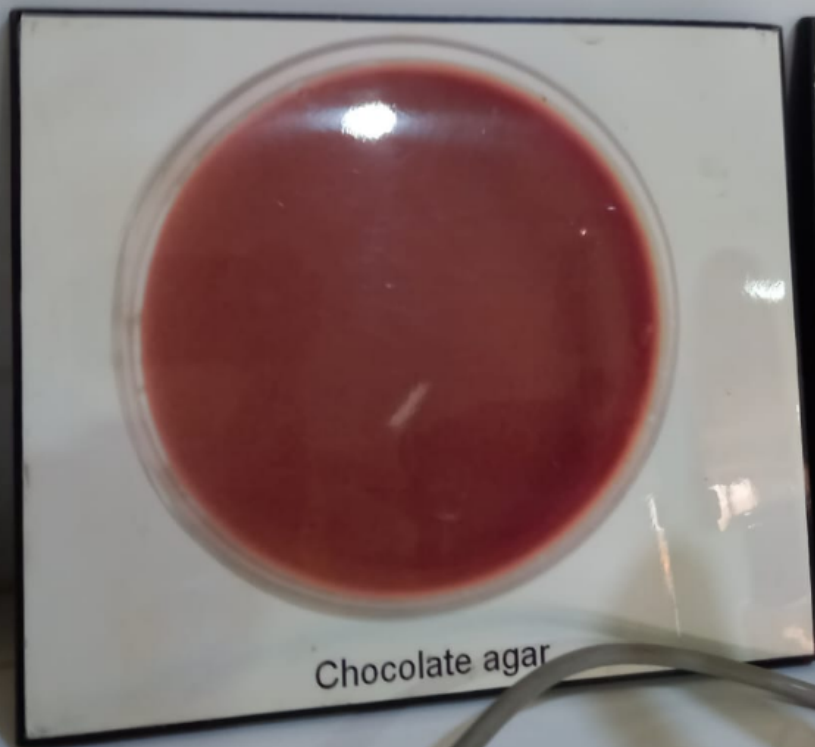
ma. High power lymph node biopsy
Nasira & Sanam

MULTIPLE MYELOMA



A. Trehine biopsy B. Peripheral smear

Sania Nansheen Akhtar & Aashima Bhatia

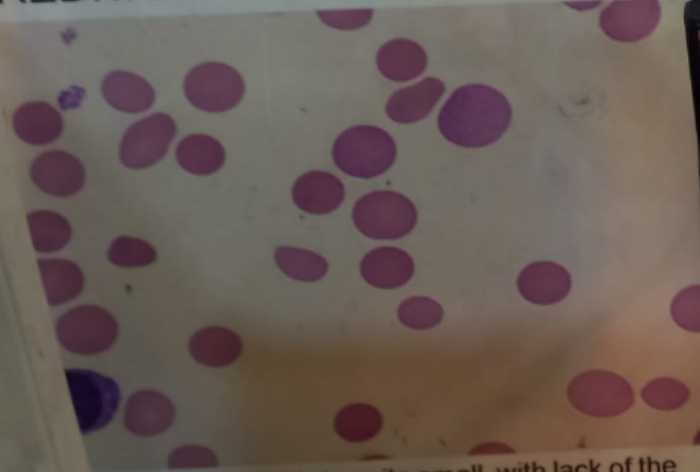




Blood agar

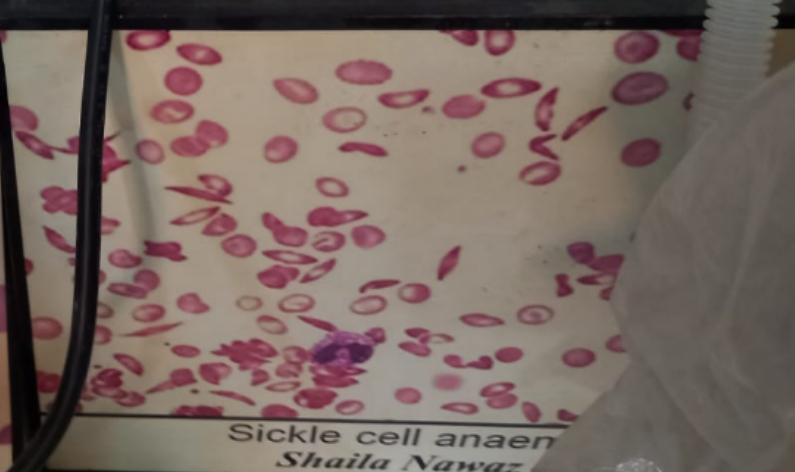


HEREDITARY SPHEROCYTOSIS

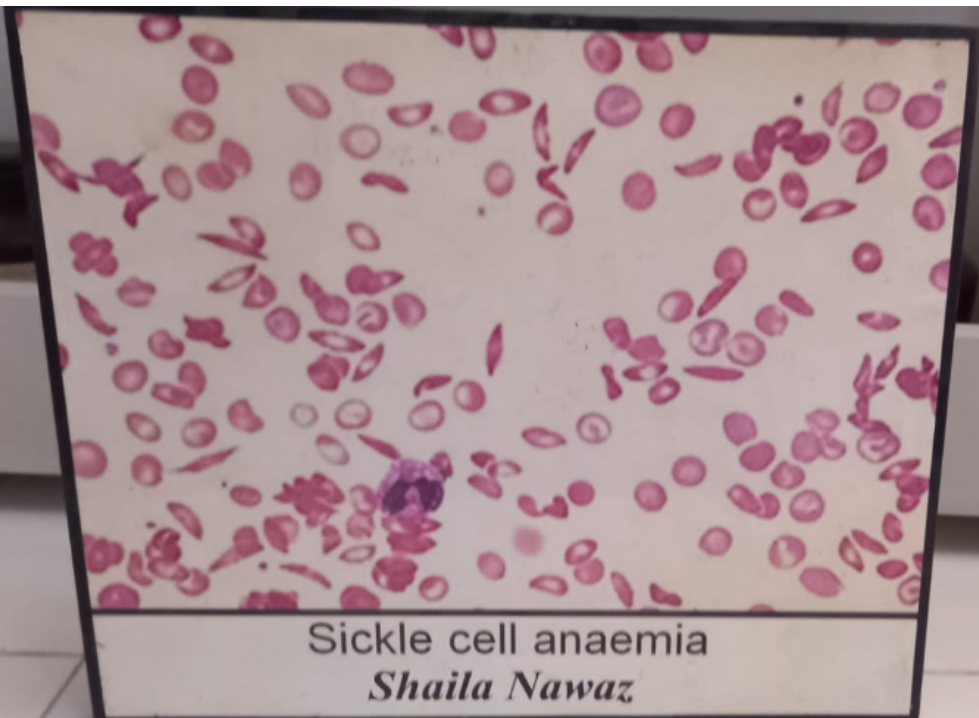


ny of these RBC's is quite small, with lack of the pallor. These RBC's are spherocytes.

Mehreen Yousaf

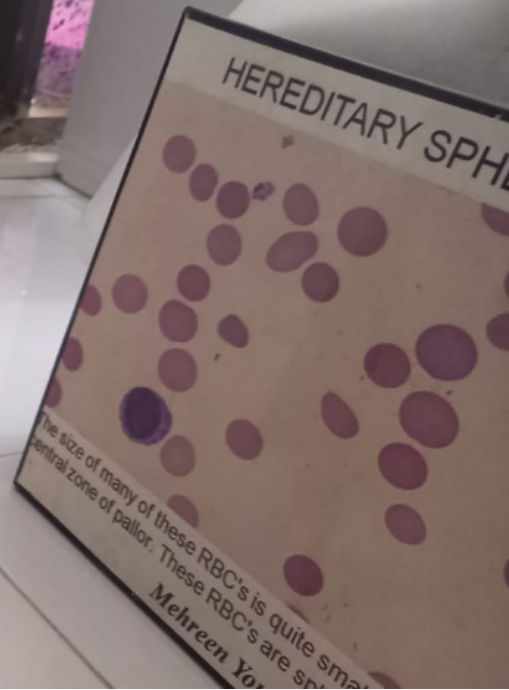
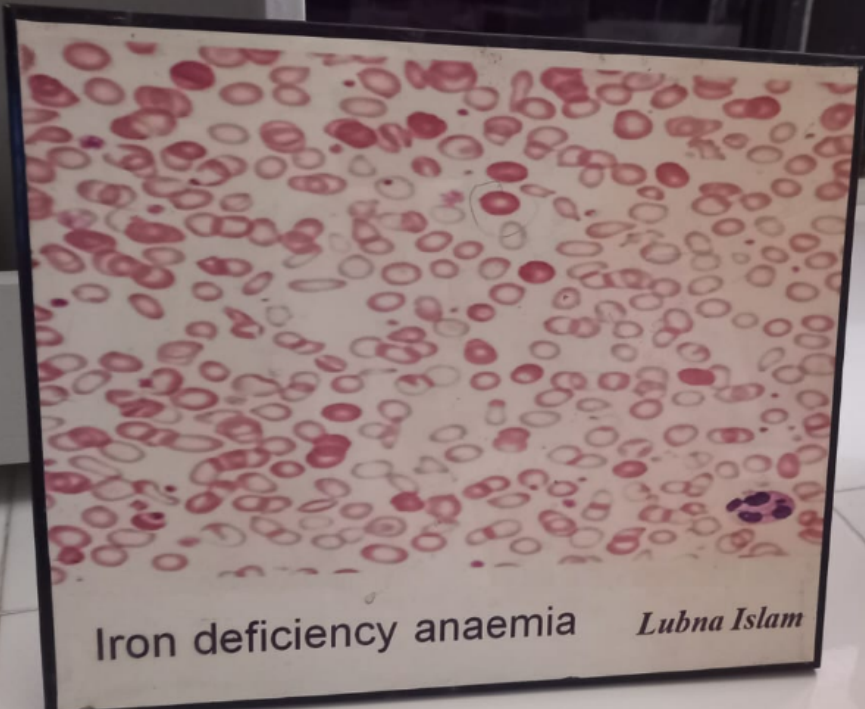


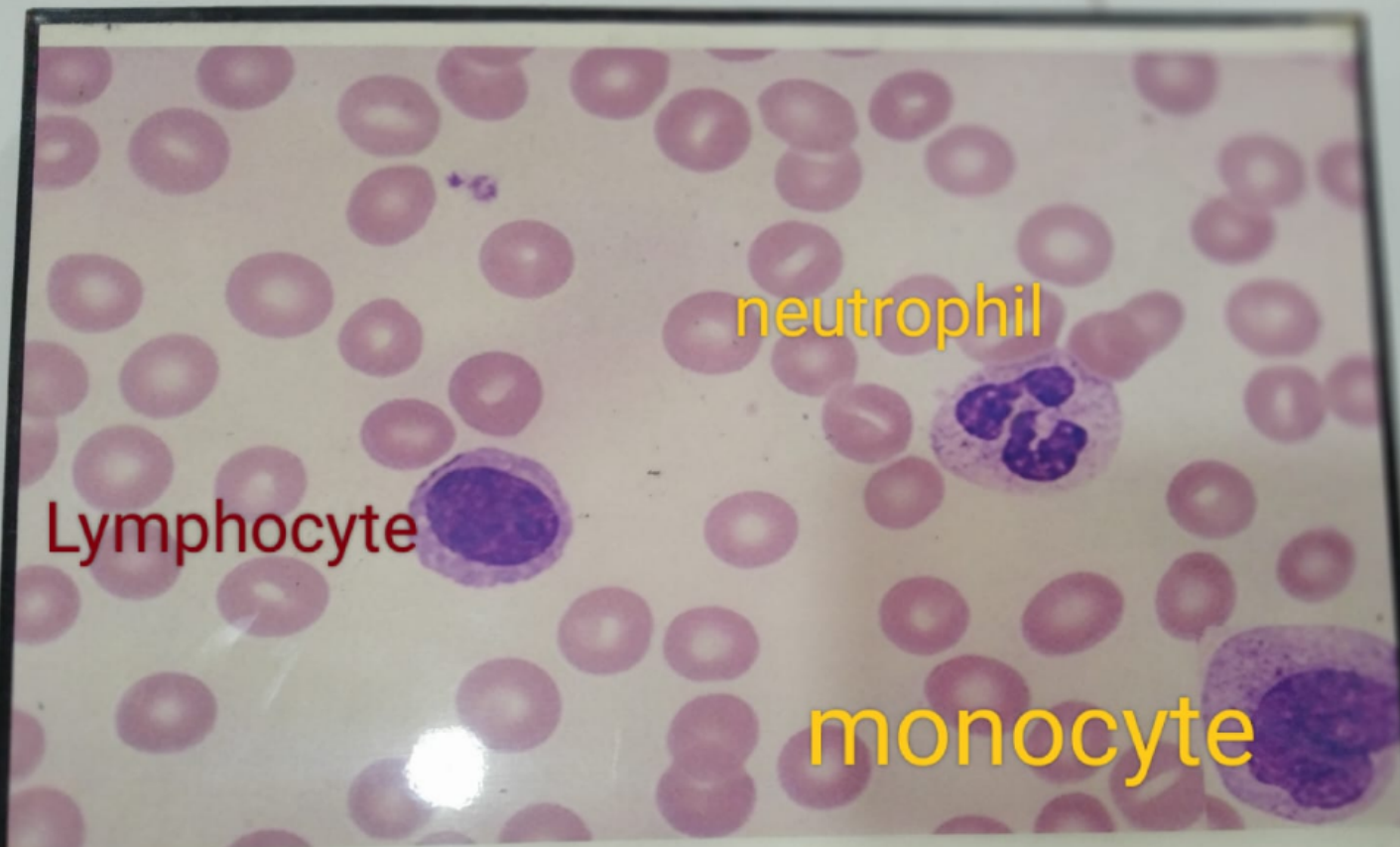
Sickle cell anaemia
Shaila Nawaz



Sickle cell anaemia
Shaila Nawaz







A normal mature lymphocyte is seen on the left compared to a segmented PMN on the right. A monocyte is visible in the right lower corner -- *Maliha Tariq*